



Lenovo Tab S8 Power Button Replacement

Guide showing the replacement of the power button

Written By: James Albu



INTRODUCTION

If you have to forcefully press the power button multiple times to get your screen to come on, follow these simple steps to replace the power button.



TOOLS:

- [Spudger](#) (1)
 - [iFixit Opening Tools](#) (1)
-

Step 1 — Power Button

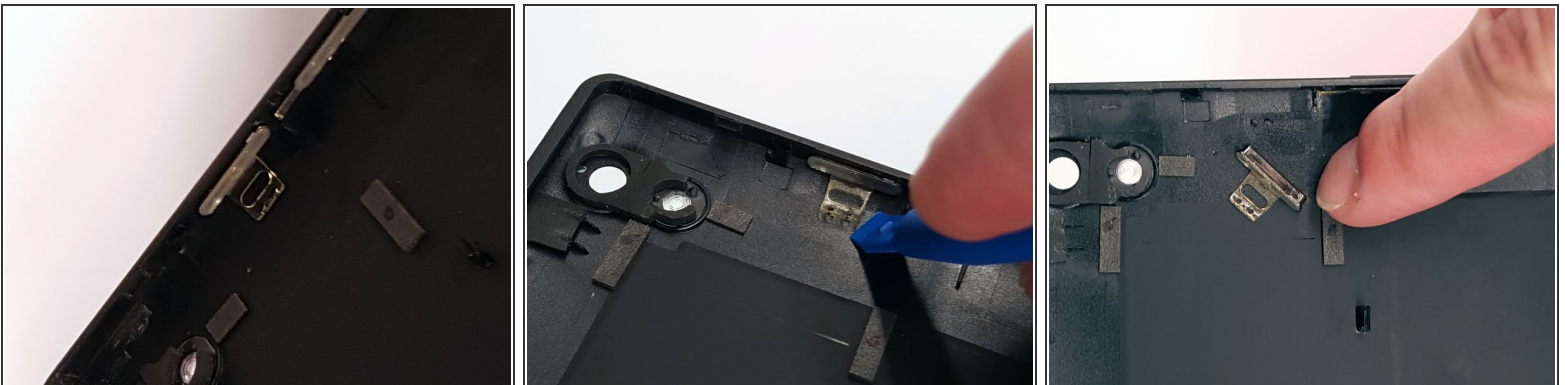


i Make sure the device is powered off

- Gently insert a spudger into one of the bottom corners between the screen and body case. Gently slide the spudger along the inside of the crack to pry the case open

! Be careful of the small volume and power buttons when prying the case with the spudger. They are connected with small pieces of plastic that break easily.

Step 2



- Gently lift the clear-yellow rubber flap from the plastic pegs with a plastic opening tool.

i The rubber flap secures the button to the casing, and it falls out easily.

To reassemble your device, follow these instructions in reverse order.