



# Lenovo Tab S8 Speakers Replacement

This guide will detail how to access and replace the speakers that come with the Lenovo Tab

Written By: Thomas Rill



# INTRODUCTION

In this guide, you will learn how to properly access each of the speakers within the Lenovo Tab S8 and remove them safely.



---

## TOOLS:

- [Spudger](#) (1)
  - [Screwdriver Phillips J000](#) (1)
  - [iFixit Opening Tools](#) (1)
-

## Step 1 — Battery



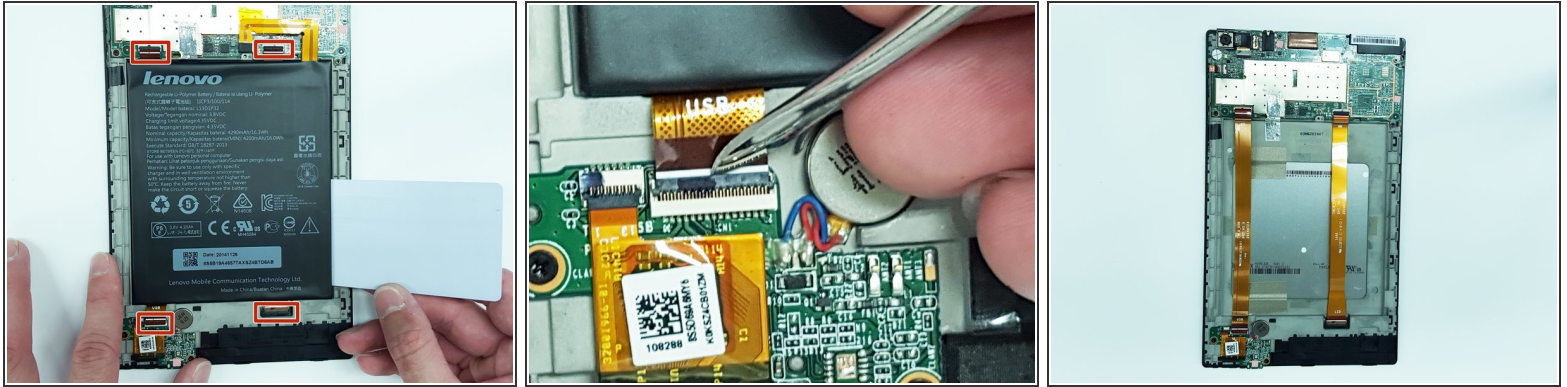
-  Make sure the device is powered off.
- Gently insert a spudger into one of the bottom corners between the screen and body case.
- Slide the spudger along the inside of the crack in order to pry the case open.
-  Be careful of the small volume and power buttons when prying the case with the spudger. They are connected with small pieces of plastic that break easily.


## Step 2



- After the cover has been removed, unscrew the M1.6 x 2mm screw from the battery cable with a j000 Philips head bit.
- ⚠ Using screwdriver bits that do not fit snugly in the screw head have a tendency to strip the screw and render it unusable.
- Remove the tape by gently scraping the edges up with a spudger.

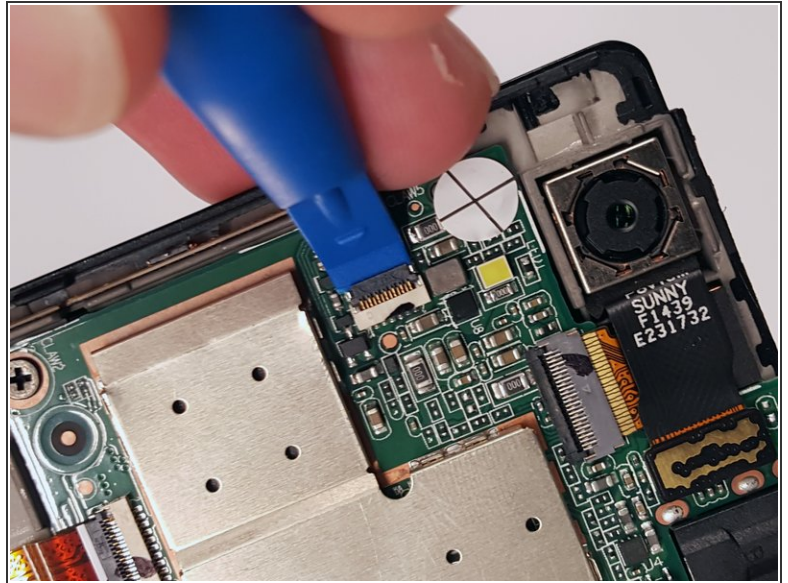
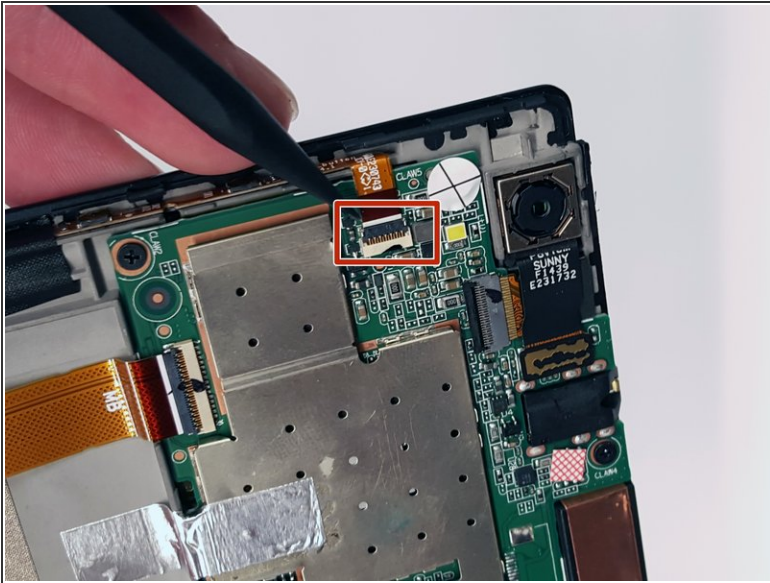
## Step 3



 The ribbon cables under the battery need to be detached from other electronics as a precaution in case the ribbon cables remain stuck to the battery during removal.

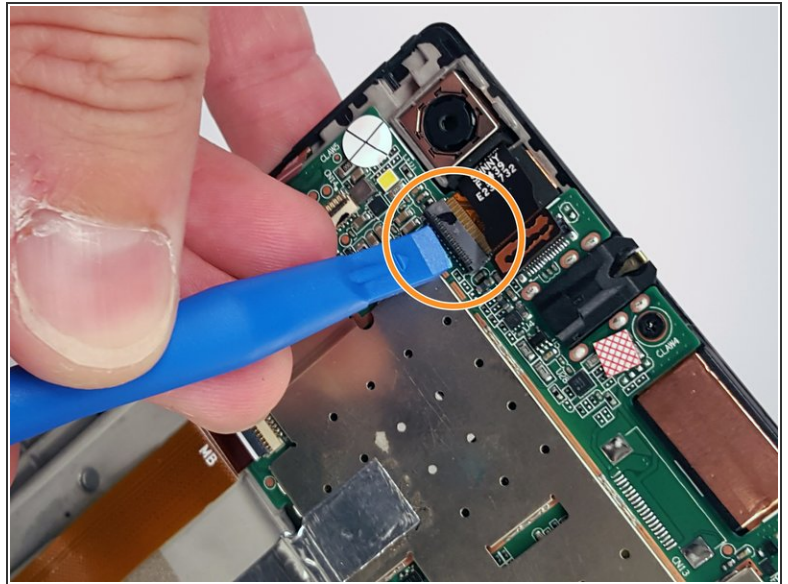
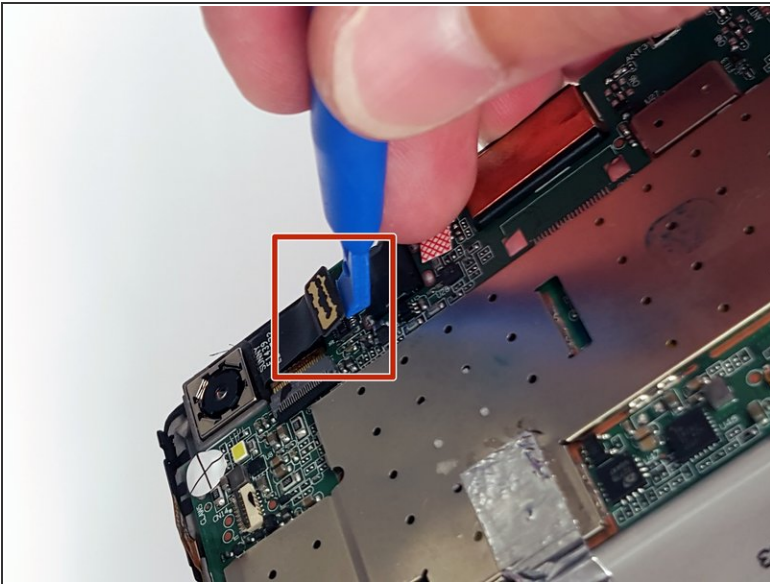
- Gently lift the flaps on the four ZIF connectors.
- Use a plastic card to gently pry the battery from the device.
- ① There may be glue holding the bottom of the battery to the housing, so it is best to use a card to pry the battery away from its housing. If there is resistance, use a spudger to detach the glue while the battery is partially raised.

## Step 4 — Motherboard



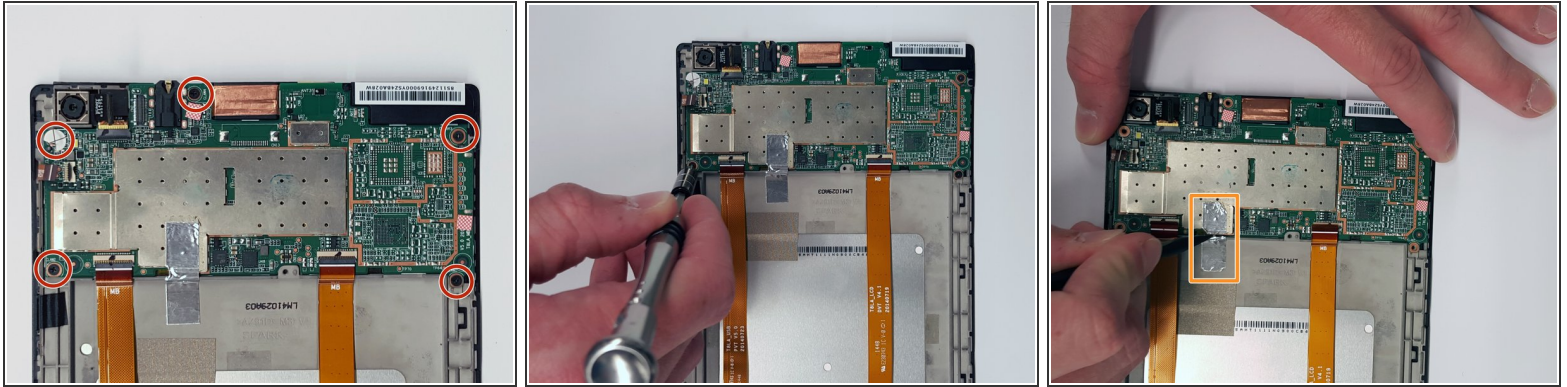
- Remove the the ribbon cable located under the camera. Take a plastic opening tool and gently lift the black flap on the ribbon cable connection.

## Step 5



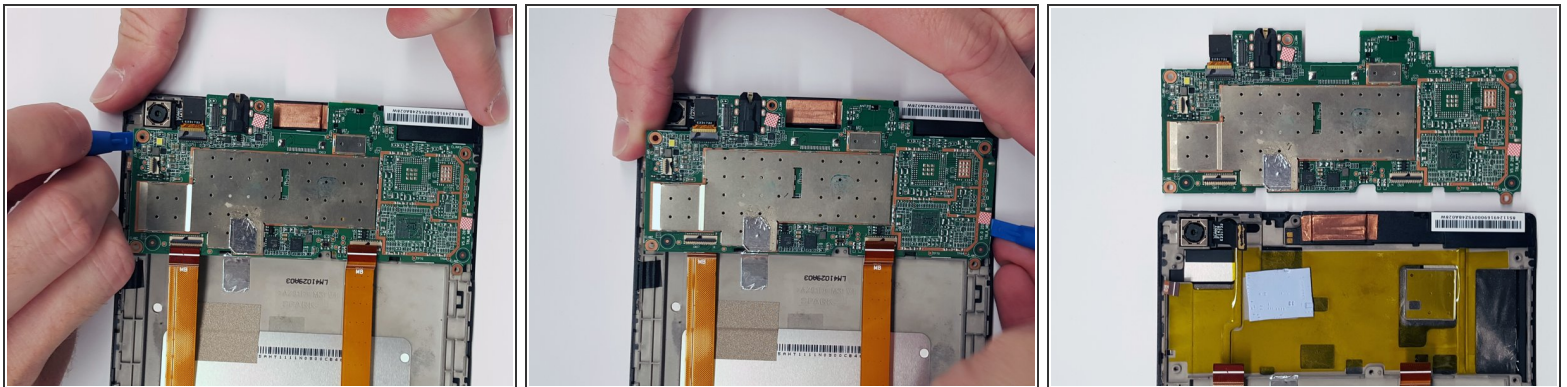
- Remove the black ribbon cable located next to the camera by using the plastic opening tool to gently pry it up. It should pop up easily.
- Remove the ribbon cable by flipping the small black bar up and sliding the ribbon cable out.

## Step 6



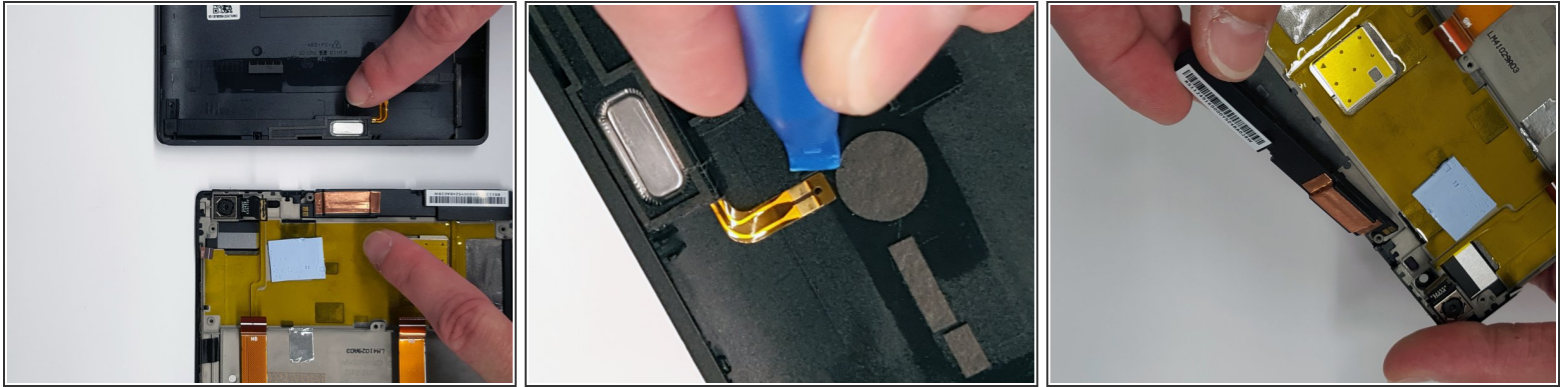
- Remove each of the five M1.6 x 2mm screws to free the motherboard from the device.
- i* There is one screw hidden under a circular white sticker directly below the camera. It must be removed in order to take out the screw that is underneath it.
- The piece of silver tape will need to be cut or removed to remove the motherboard from the device frame.

## Step 7



- Use a plastic opening tool to gently pry the motherboard out of the frame from each side.

## Step 8 — Speakers



- Once you have removed the motherboard and the battery, locate both the upper and lower speakers.
- ⓘ The lower speaker wire is glued to the back casing of the device, so be gentle when removing the wire.
- Lift up the wire with a plastic opening tool. Make sure this tool has a sharp edge.

To reassemble your device, follow these instructions in reverse order.