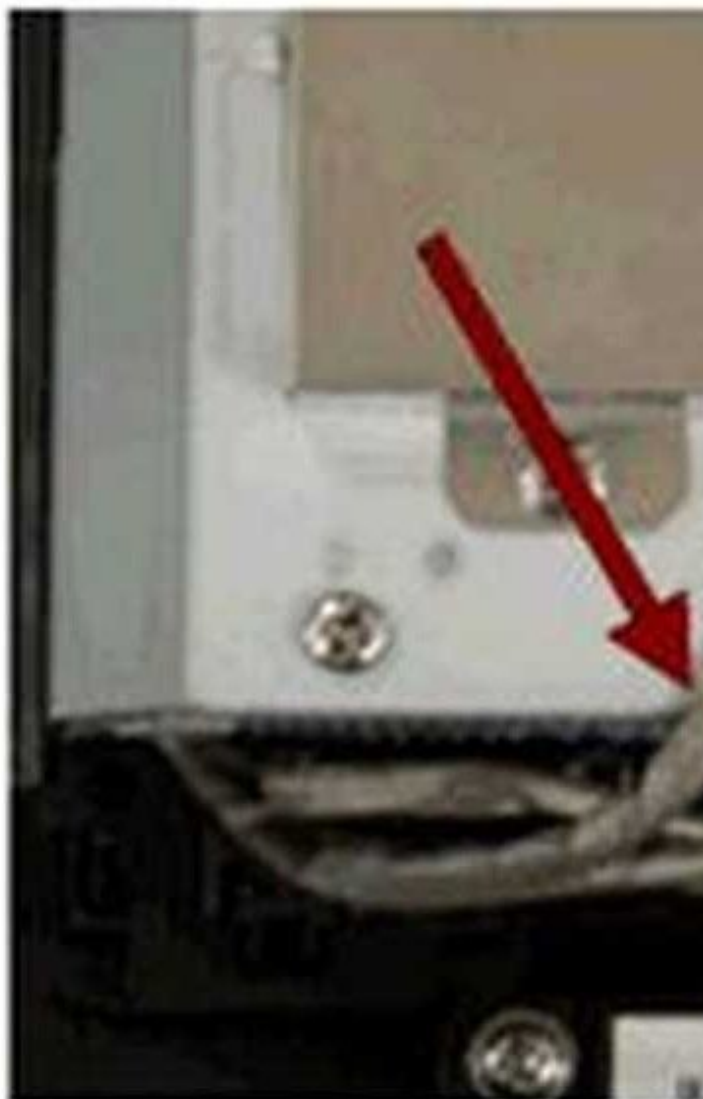




# Lenovo ThinkCentre A70z Backlight Cable Replacement

The ThinkCentre A70z Monitor lamp turns off so can't see display without a light to verify LCD screen is working.

Written By: James Finch



## INTRODUCTION

If found a great deal on eBay for this computer I thought for \$50 and on the same day I bought a Lenovo E530 i5 ThinkPad w/video issue for \$25.

Was a video issue investment in training day.

At first I thought the computer wasn't even working, though sounded like was operating after the screen would go dark after the Window OS logo displayed.

Finally, after brushing the dust off and starting to work on again I found the computer runs well, but the screen is dark due to a lamp being off or an abnormal display failure. I tested with a flashlight to see if I could see the LCD screen and found I could.

The issue is caused by the conductive tape wrapped around the backlight cable as seen below.

The issue has a low failure rate with the woven type of conductive tape. However, has a high failure rate with an aluminum foil type of conductive tape.

LG panel mentioned, "do not attach a conducting tape to lamp connecting wire directly. If the lamp connecting wire attach to a conducting tape. LCD module will have a risk for low luminance.

I removed the conductive tape wrapped around the backlight as noted and now the computer is working great again other than a login issue that will be corrected with a Windows 10 reset or I'm thinking a fresh install of a Linux OS for a multiboot system.

I'm thinking I'm going to read into this system more and see if I can modify to use an external display with a universal video card adapter with multiple outputs and I'm thinking will need a power input too.

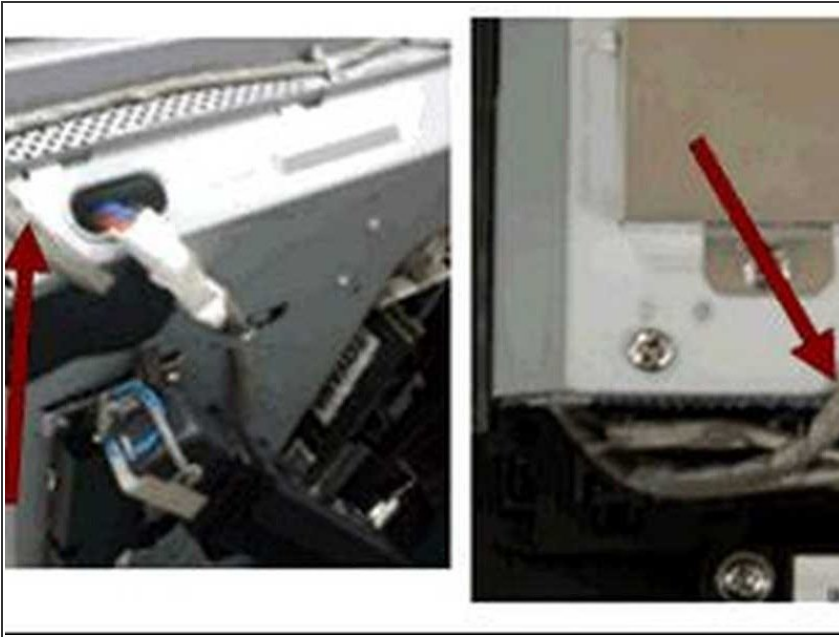
Hope this helps!

---

### TOOLS:

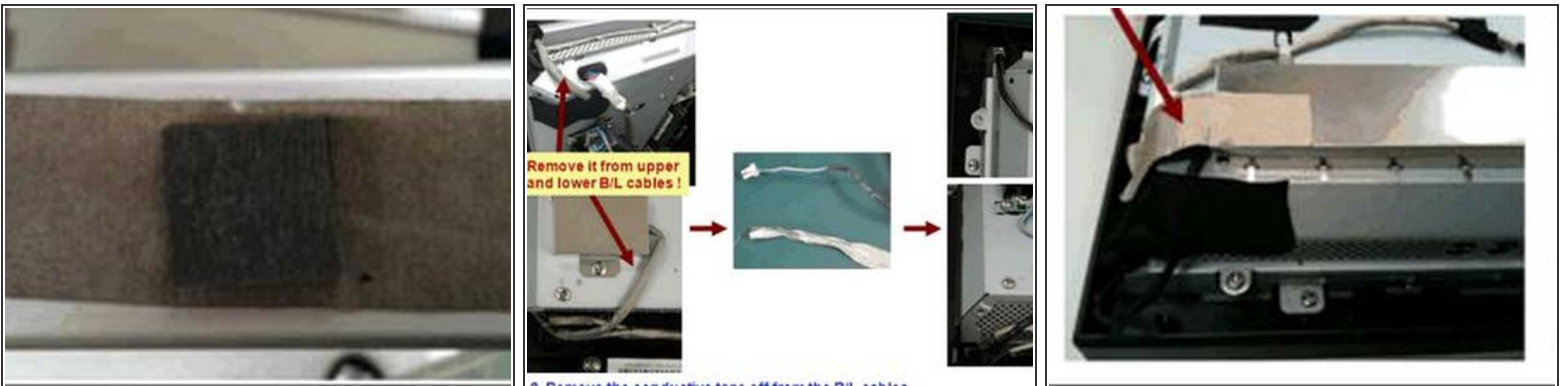
- [Phillips #3 Screwdriver](#) (1)

## Step 1 — Remove Conductive Tape from Backlight Cable



- Remove conductive tape wrapped around the backlight cable as below seen below.
- The issue has a low failure rate with the woven type of conductive tape. However, has a high failure rate with an aluminum foil type of conductive tape.

## Step 2



- Order special tape that has sponge as noted: 03T9708 34.3BE7.001  
FRU\_EMI\_GASKET\_MB\_SHEILDING\_TOYAMA
- Replace previous conductive tape with new tape 03T9708 after Removing original tapes.

To reassemble your device, follow these instructions in reverse order.