



# Lenovo ThinkPad Edge E420s Glass Screen Replacement

Replace your screen in order to restore functionality to your Lenovo Thinkpad Edge E420s.

Written By: Keyadri Summerlin



---

## INTRODUCTION

If you need to replace the screen, use this guide to access and remove the screen on this device. For this guide you will need a plastic opening tool, a Phillips #0 and Phillips #00 screwdriver. This repair may be needed either as a prerequisite to replacing other parts or in order to fix issues such as frequent, but irregular crashes, error messages, or disappearing or scrambled files.




### TOOLS:

- [Phillips #00 Screwdriver](#) (1)
  - [Phillips #0 Screwdriver](#) (1)
  - [iFixit Opening Tools](#) (1)
-

## Step 1 — Hard Drive



 There is no external access to the battery. Please make sure the at the battery has been drained or disabled through BIOS before beginning.

- Flip the device over.


## Step 2



- Use a Phillips #00 screwdriver to remove one M2 x 3mm screw from the side of the device.

## Step 3



- Swing the cover out slightly like a hinge.
  - Pull the cover directly away from the case towards the base of the laptop.
  - Lift the cover up and away from the device to remove it.
-  You may hear a slight pop when you pull the cover off.

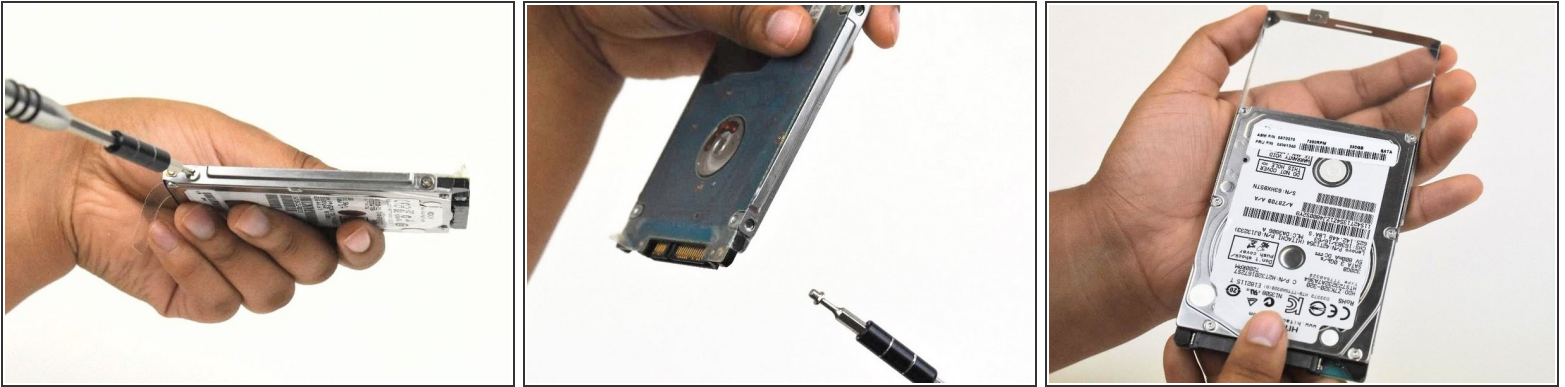
## Step 4



- Use the clear tab to slide the hard drive out of the device.



## Step 5



- To replace the hard drive, remove the four M2 × 4mm wafer-headed screws on the sides of the hard drive case using a Phillips #00 screwdriver.
- Slide the old hard drive directly out.
- ⓘ When reassembling, make sure the hard drive is securely in the case before beginning.

## Step 6 — Top Case



- Use a Phillips #0 screwdriver to remove eight M2 × 3 mm screws near the front opening and scattered across the bottom of the laptop.
- Remove three M2x3 mm screws using a Phillips #00 screwdriver from the base of the laptop near the opening.

## Step 7



- Remove the M3 x 2mm screw from the hole left by the hard drive using a Phillips #00 screwdriver.

## Step 8



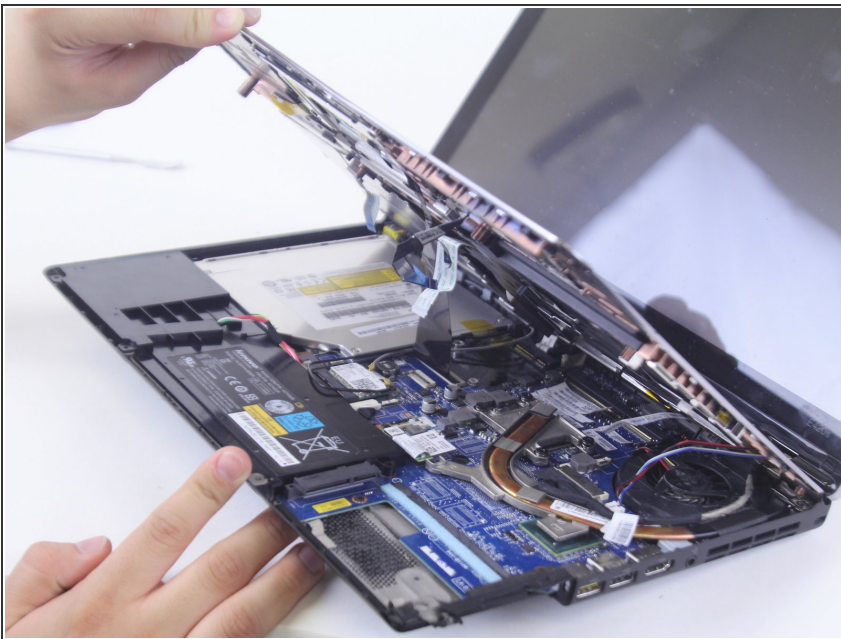
- Flip over the device.
- Open the device normally.

## Step 9



- Wedge the plastic opening tool between the upper and lower halves of the lower case.
- Lift the end of the opening tool slowly until the case separates.
- ⓘ Hearing a small popping or cracking noise during this step is normal

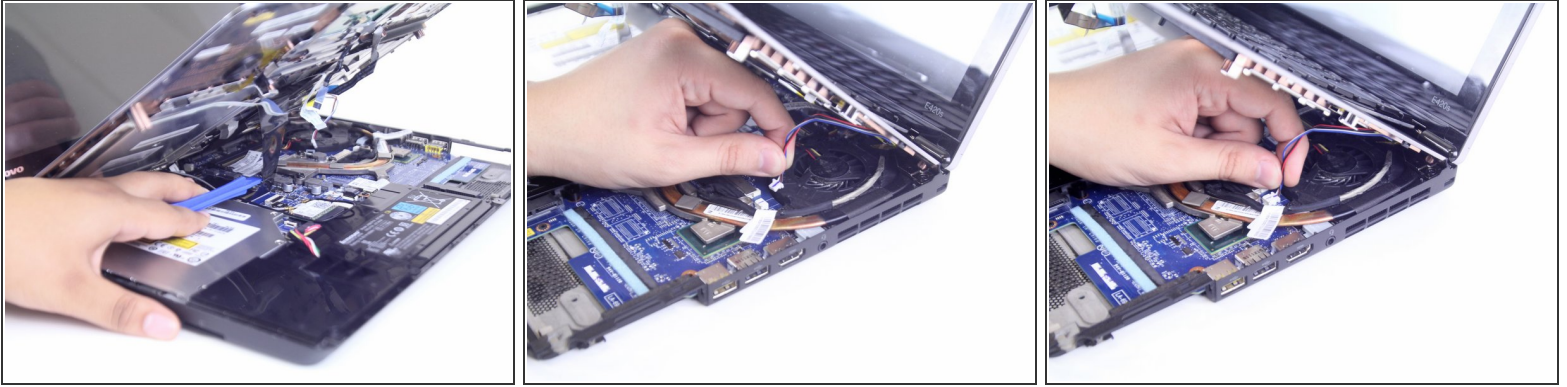
## Step 10



- Lift the upper half of the case up slowly.
- ⚠ Be sure not to yank any of the wires connected to the case as this could damage them.



## Step 11



- Locate and disconnect the 4 ribbon wires from the top case.
  - Locate and disconnect the two additional connecting wires.
  - ☑ Some wires may be connected by a clamp. In order to remove the clamp, press upwards on the lever attached to the connector
- ⚠ Be careful to not yank on the wires when disconnecting them as they are easily damaged.

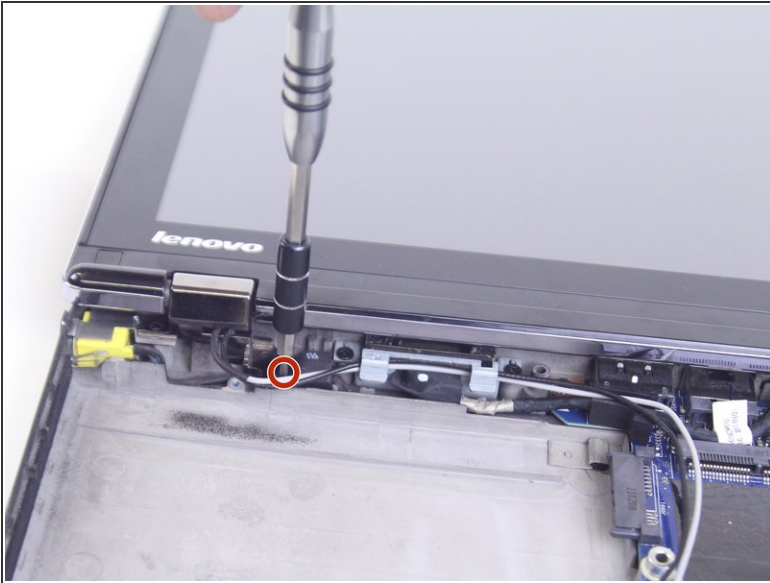
## Step 12



- Lift the unattached case away from the device and place it to the side.
- ☑ When reassembling ensure that all parts of the case are properly aligned.

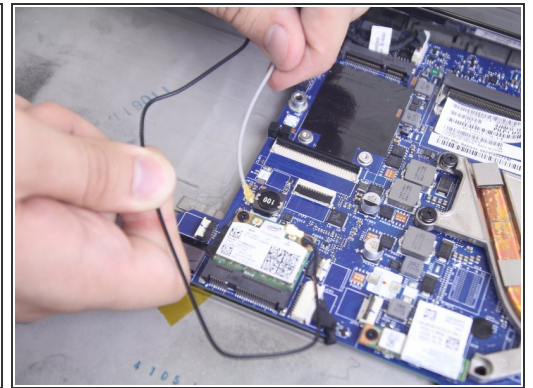
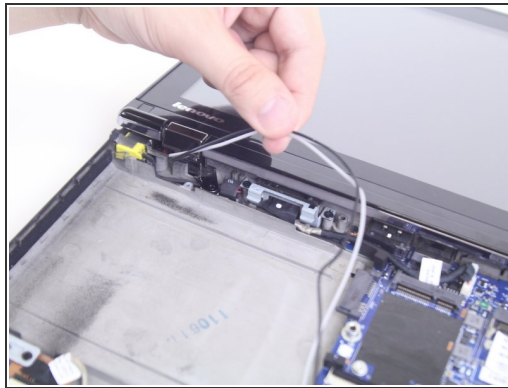
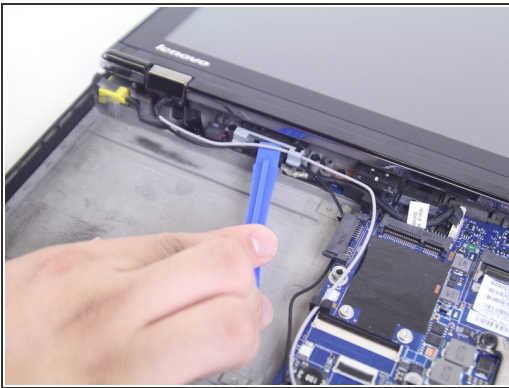


## Step 13 — Glass Screen



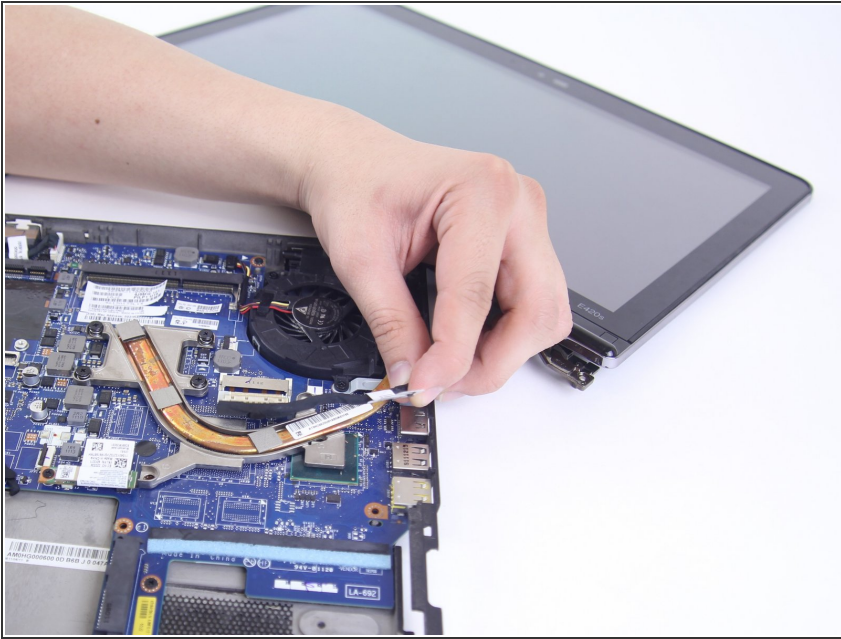
- Unscrew the two M2 x 3mm screws near the hinges using a Phillips #00 screwdriver.

## Step 14



- Slide the black and grey wires out from underneath the plastic tab with the plastic opening tool.
- Disconnect the black and grey wires connecting the screen and the motherboard.

## Step 15



- Pull out the fabric covered wire connecting the Screen to the motherboard underneath the cooling fan.

⚠ Make sure to pull parallel to the slot the wire is connected to, otherwise you may damage or completely break it.

## Step 16



- Lift the screen away from the device.

To reassemble your device, follow these instructions in reverse order.