



# Lenovo ThinkPad Edge E520 Front Compartment Case Replacement

How to replace the Lenovo ThinkPad Edge E520 front compartment case.

Written By: David Skarbek



# INTRODUCTION

This guide will help to replace the front compartment case of the Lenovo Thinkpad Edge E520.




## TOOLS:

- [Phillips #0 Screwdriver](#) (1)
  - [Spudger](#) (1)
-

## Step 1 — Battery




 Power off computer before the start of these steps.

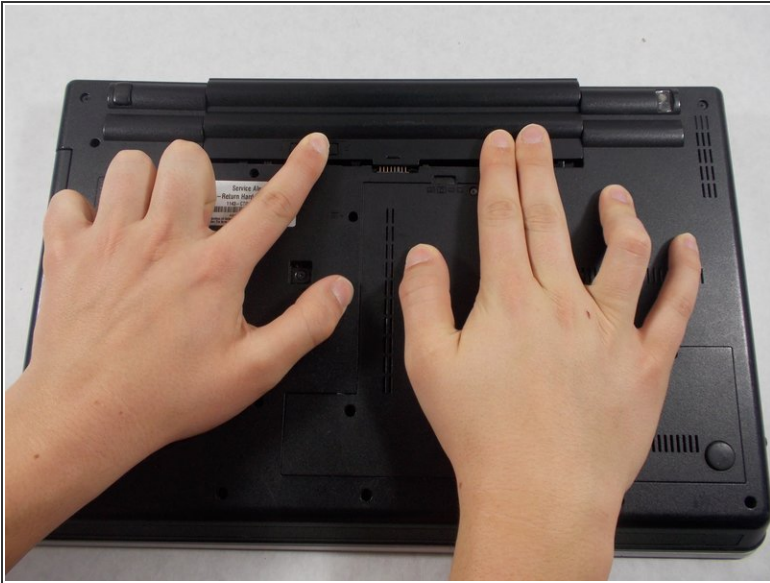
- Close the computer screen.

## Step 2



- Flip the computer so that the back is facing upwards.
-  The switch should be located towards the hinge of the laptop near the battery pack and have a lock icon associated with it.

## Step 3



- Slide the switch towards the unlocked lock icon.
- While holding it in the unlocked position, slide the battery towards the hinge.
- Fully separate the battery pack from the back of the laptop.

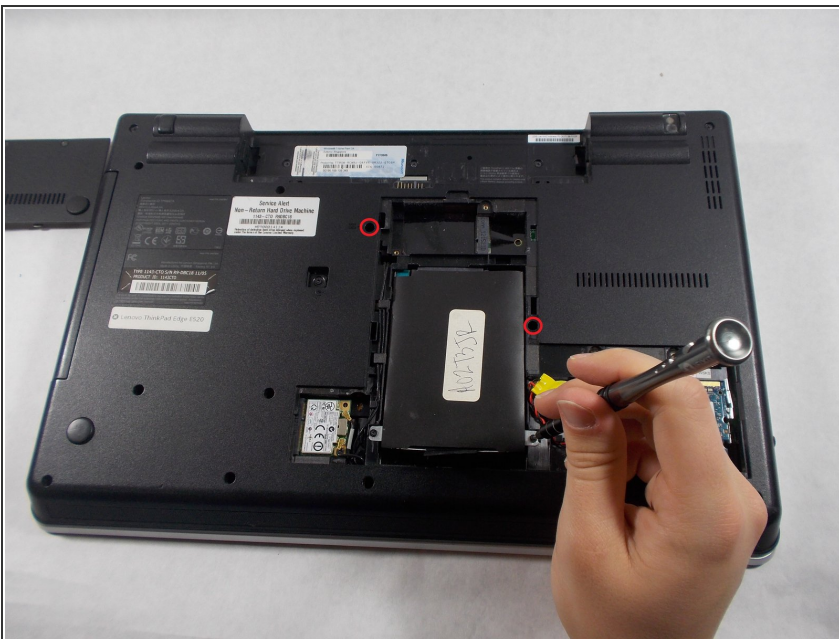


## Step 4 — Back Plate



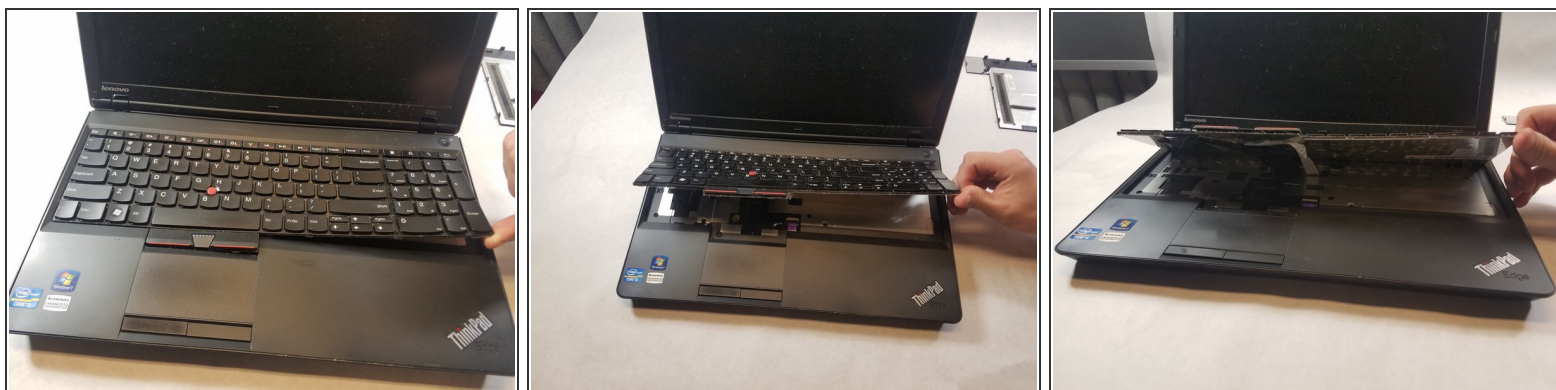
- Flip over the laptop and position it with the battery being furthest away from you.
- Remove the four screws on the edges of the T-Shaped plate with a Phillips #0 screwdriver.
- Remove the T-Shaped plate from the back of the computer. It should come off easily if all four aforementioned screws are removed.
- Screw length 6.35 mm, head 3.175 mm

## Step 5 — Keyboard



- There are two screws that have keyboard symbols pointing at them.
- Unscrew the screws with a 3.175 mm diameter and 6.35 mm length with a Phillips head screwdriver.

## Step 6



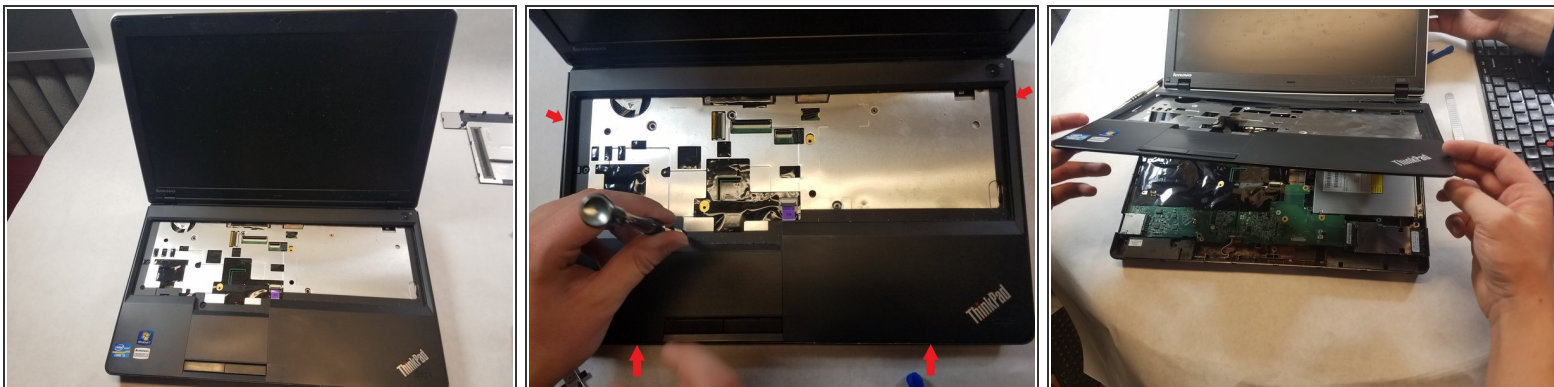
- Turn the laptop back over so that the keyboard is facing you.
- Use your hands to separate the keyboard from the laptop

## Step 7 — Front Compartment Case



- Remove all remaining screws on the back of the device.
- Screw length 6.35 mm, head 3.175 mm Screws behind battery length 3.175 mm, head 3.175 mm

## Step 8



- Flip device back over and open the screen.
- Insert the prying tool on one edge of the case and follow along all four edges until the case frees up.
- Remove the case.

To reassemble your device, follow these instructions in reverse order.