



Lenovo ThinkPad Edge E520 Keyboard Replacement

How to replace the Lenovo Thinkpad Edge E520 keyboard.

Written By: Holly Dunham



INTRODUCTION

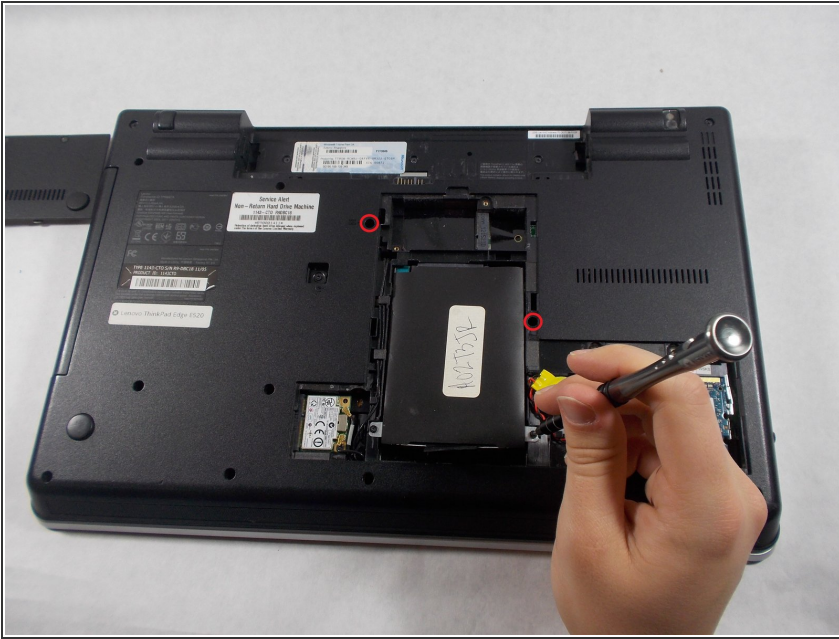
This guide will assist you in replacement of the Lenovo Thinkpad Edge E520 keyboard. You will require a Phillips head screwdriver for this replacement.



TOOLS:

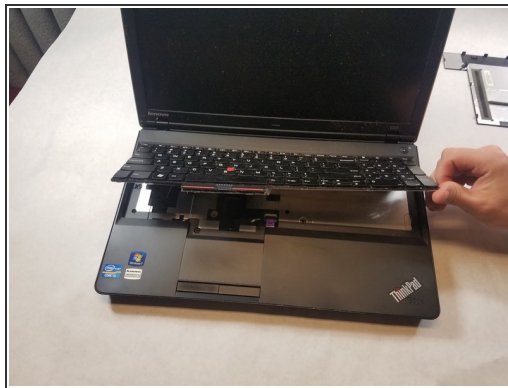
- [Phillips #0 Screwdriver](#) (1)
 - [Spudger](#) (1)
-

Step 1 — Keyboard



- There are two screws that have keyboard symbols pointing at them.
- Unscrew the screws with a 3.175 mm diameter and 6.35 mm length with a Phillips head screwdriver.

Step 2



- Turn the laptop back over so that the keyboard is facing you.
- Use your hands to separate the keyboard from the laptop

To reassemble your device, follow these instructions in reverse order.