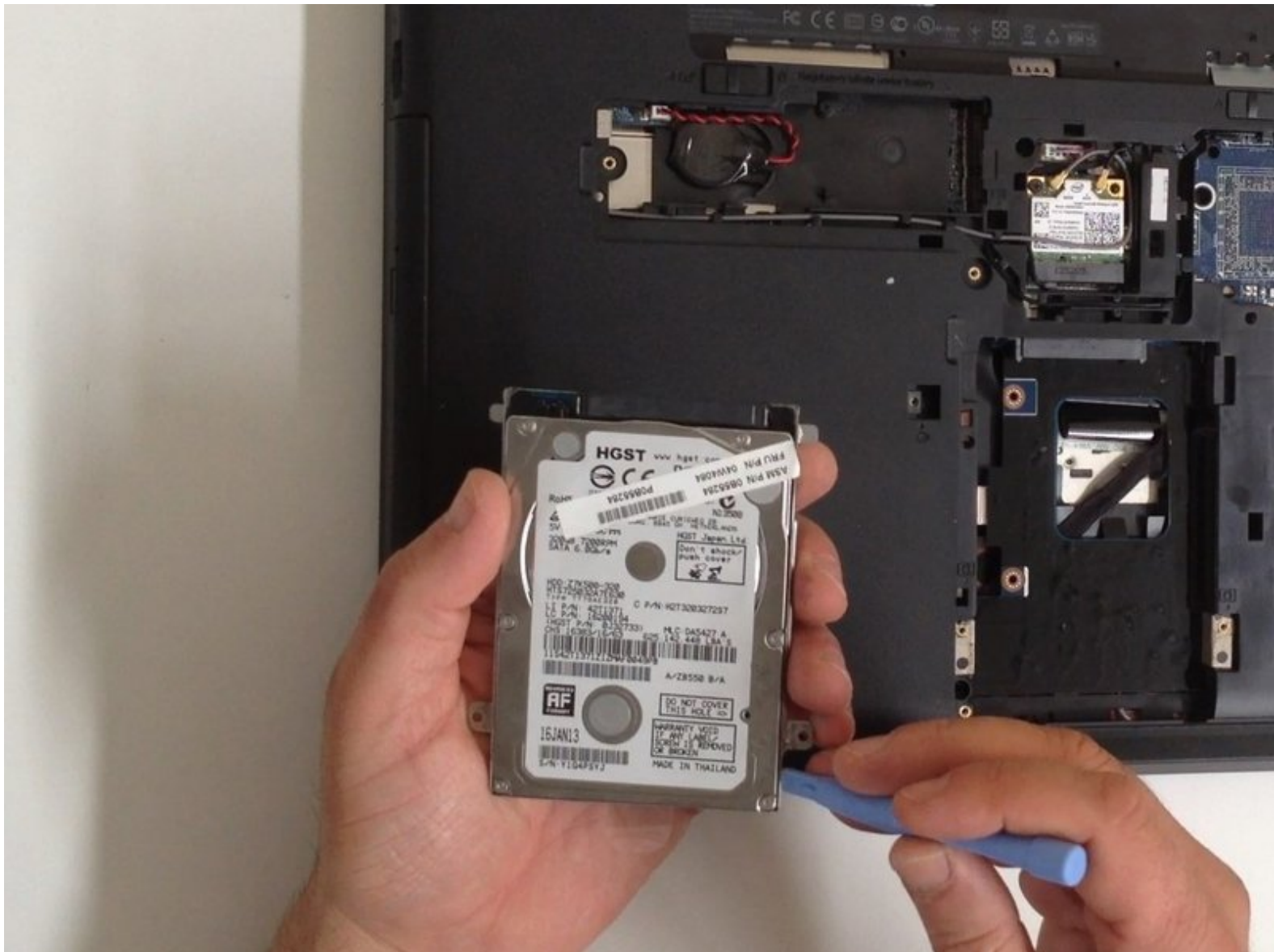




Lenovo ThinkPad Edge E530 HDD Replacement

Lenovo ThinkPad Edge E530, E530c HDD Replacement

Written By: ZFix



INTRODUCTION

Lenovo ThinkPad Edge E530 / E530c - how to change / upgrade the SATA HDD

[video: <http://youtu.be/MM-G4OkeagQ>]



TOOLS:

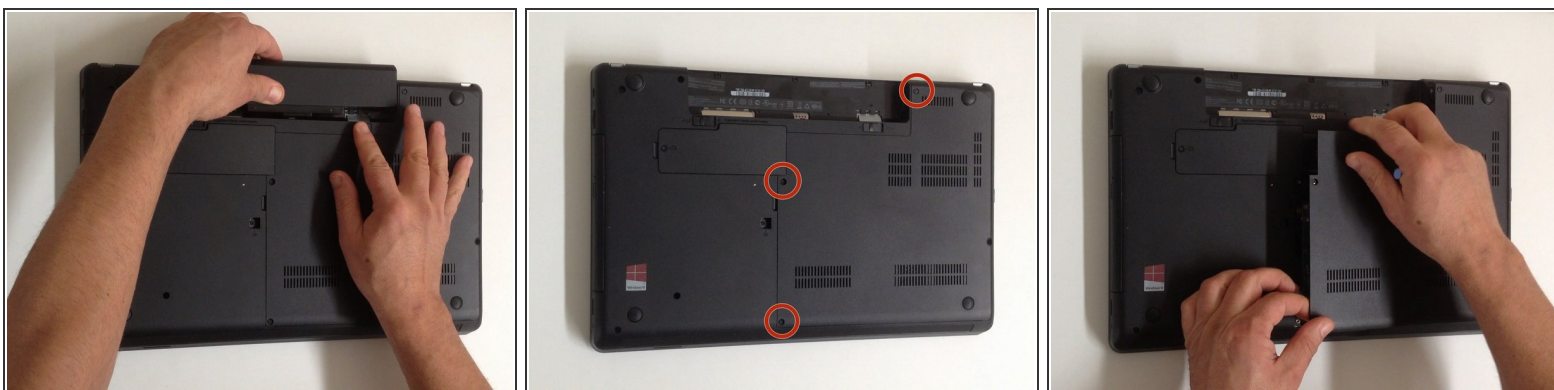
- [Phillips #0 Screwdriver](#) (1)
- [iFixit Opening Tools](#) (1)



PARTS:

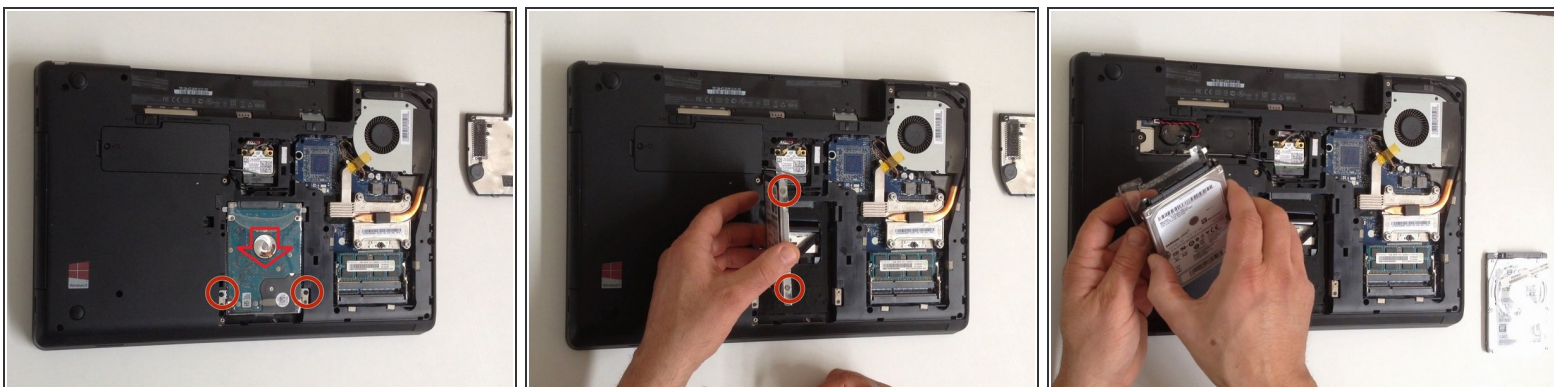
- [1 TB 5400 RPM SATA Hard Disk](#) (1)
- [500 GB 5400 RPM 2.5" Hard Drive](#) (1)

Step 1 — HDD Cover



- Switch-off the Laptop and remove the battery.
- The HDD/Memory Cover is held by 3x Phillips screws. Remove them.
- Remove the Cover.

Step 2 — HDD (Hard Disk Drive)



- There are 2 x philips screws, securing the HDD Caddy Case. Remove them and slide the HDD to disconnect it from the SATA Connector.
- The Caddy Case is held to the HDD by 4x Phillips screws. Remove them and separate the HDD from the case.
- After installing the new HDD you must install a new OS or clone your old HDD.
- You can install SATA HDD, 2.5" up to 1TB.
- **Did you do it successfully?**

To reassemble your device, follow these instructions in reverse order.