



Lenovo ThinkPad R61i Hard Drive Replacement

This guide will show you how to replace your hard drive, or upgrade to an SSD in your ThinkPad R61i.

Written By: Sam



INTRODUCTION

This guide will show you how to replace your hard drive, or upgrade to an SSD in your ThinkPad R61i.



TOOLS:

- [Phillips #2 Screwdriver](#) (1)



PARTS:

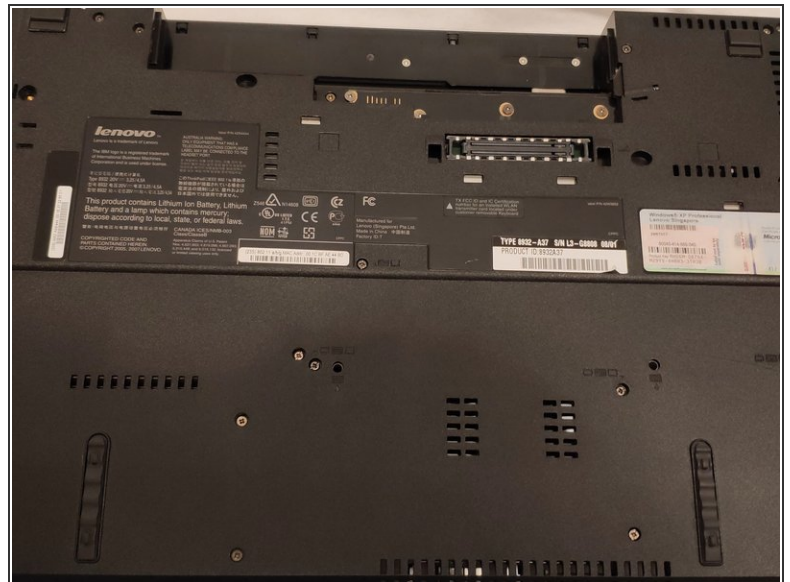
- [2.5" SATA Hard Drive](#) (1)
- [2.5" SATA SSD \(optional, will be faster than a hard drive\)](#) (1)

Step 1 — Gather Materials



- You will need to have a replacement drive ready. The R61i officially supports SATA I speeds, but if you flash the Middleton's BIOS, you will get the full SATA II speed. If you plan on upgrading to an SSD during this process, I would recommend flashing Middleton's BIOS. [Get more information & download links here](#)

Step 2 — Remove the battery & unplug power adapter



- You may need to apply a good amount of force to the levers that hold the battery in place. Mine was especially well stuck, as it was a recently installed aftermarket battery.

Step 3 — Remove the HDD caddy's cover



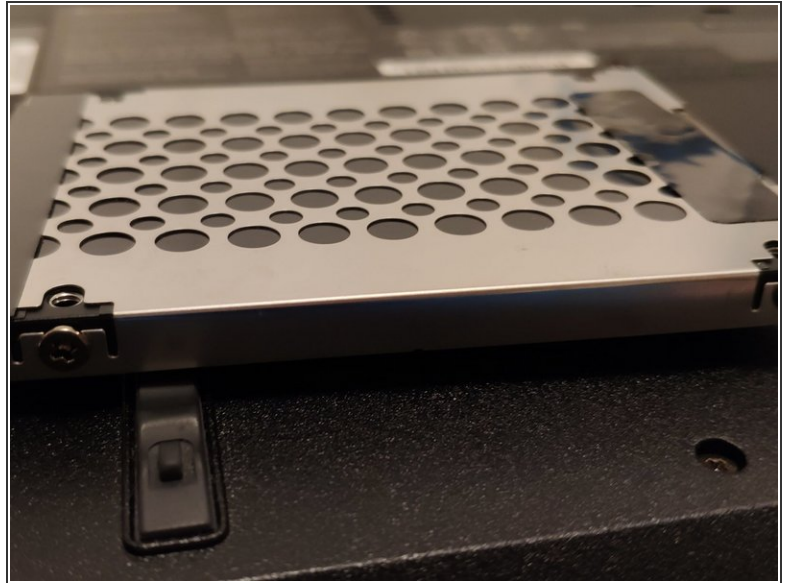
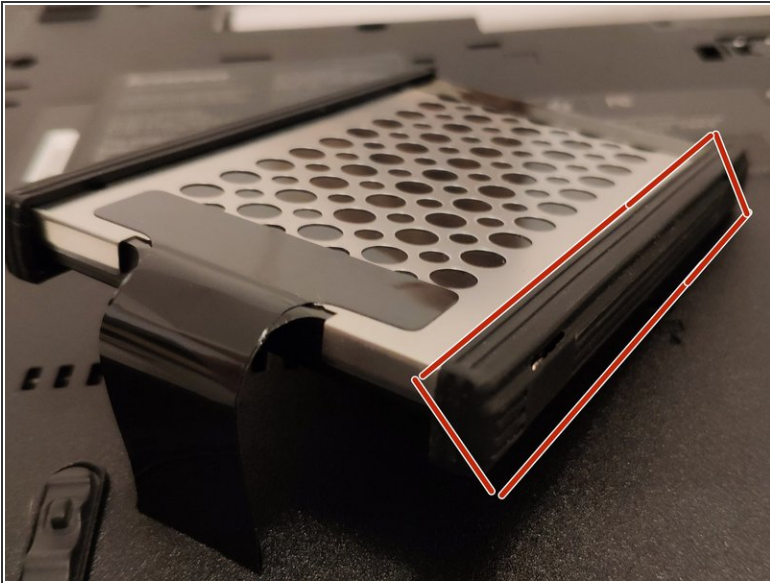
- Locate and remove the #2 philips screw on the hard drive bay cover.
- Pull the hard drive bay cover straight out. Mine required a good bit of wiggling and force before it came out of the computer.

Step 4 — Remove the caddy & hard drive



- Locate the plastic tab that you will need to use to remove the caddy. I recommend using the iFixit plastic tool to remove this, as most screwdrivers could tear or scratch the plastic or drive caddy.
- Pull the hard drive and caddy straight out of the machine.

Step 5 — Remove the rubber sleds from the drive caddy



- Remove the two rubber sleds from the drive caddy.

Step 6 — Remove the hard drive from the caddy



- Remove the four phillips head screws around the hard drive. Do not lose these, as they will be used to install your new hard drive or SSD!

Congratulations! To re-assemble the device, follow the guide in reverse order.