



# Lenovo ThinkPad T400 Hard Drive Replacement

How to replace a Lenovo ThinkPad T400 hard drive.

Written By: Tanner Therrien



## INTRODUCTION

This repair guide provide information on how to replace the Lenovo ThinkPad T400 hard drive replacement problem. Not much computer repair experience is needed for this fix. It is relatively simple and easy to follow these simple steps.



### TOOLS:

- [Phillips #00 Screwdriver](#) (1)
- [Flathead 3/32" or 2.5 mm Screwdriver](#) (1)



### PARTS:

- [1 TB SSD / Upgrade Bundle](#) (1)
- [250 GB SSD / Upgrade Bundle](#) (1)
- [500 GB SSD / Upgrade Bundle](#) (1)
- [2 TB SSD / Upgrade Bundle](#) (1)

## Step 1 — Hard drive



- Safe Shutdown: Press the "Windows" button and select "Shut down" or simply turn off the power, by pressing the power button for about 3-5 seconds until the screen completely turns off.

⚠ If your system is working now, please make sure to save all of files while in progress.

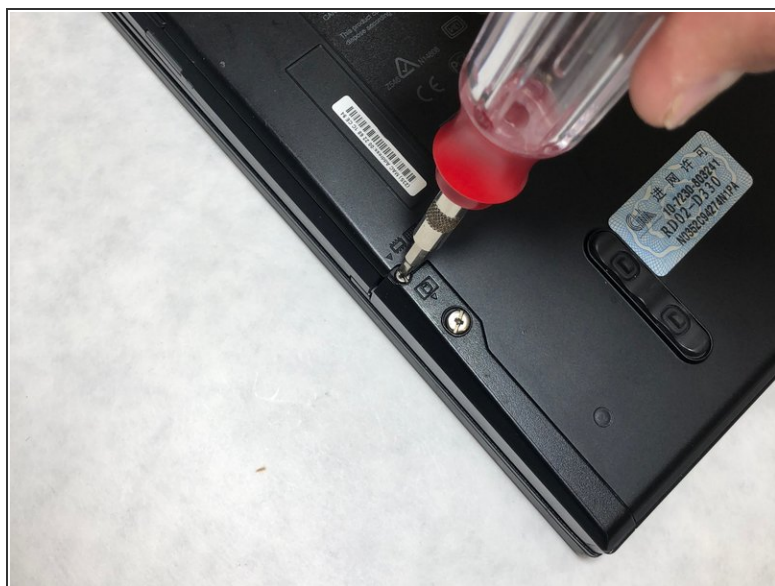
⚠ With a force shutdown, the work that hasn't been saved can be lost.

## Step 2



- Remove the power cord.
- Using the switch on the battery, slide and pull to remove it.

### Step 3



- Using a flathead screwdriver, remove the two screws that are holding the hard drive cover in place on the back corner of the computer.

### Step 4



- Use a flathead screwdriver to gently pry up the cover and remove it completely.



## Step 5



- Use the pull tab on the hard drive to completely pull out the hard drive. Please pull out slowly and gently.

## Step 6



- Using a #00 Phillips head screwdriver, remove all four screws on the hard drive cover.

## Step 7



- Remove the side bumpers from the original hard drive and place them on the new hard drive.

## Step 8



- Snap cover onto the new hard driver and tighten the four screws with a #00 Phillips head screwdriver. Then insert it back into the computer.
- ☑ Make sure the black tab is facing out, like when it was removed.

## Step 9



- Put cover back on computer and tighten screws with a flathead screw driver.

At the end of this fix, you can plug in your computer/ attach battery and turn on the computer.