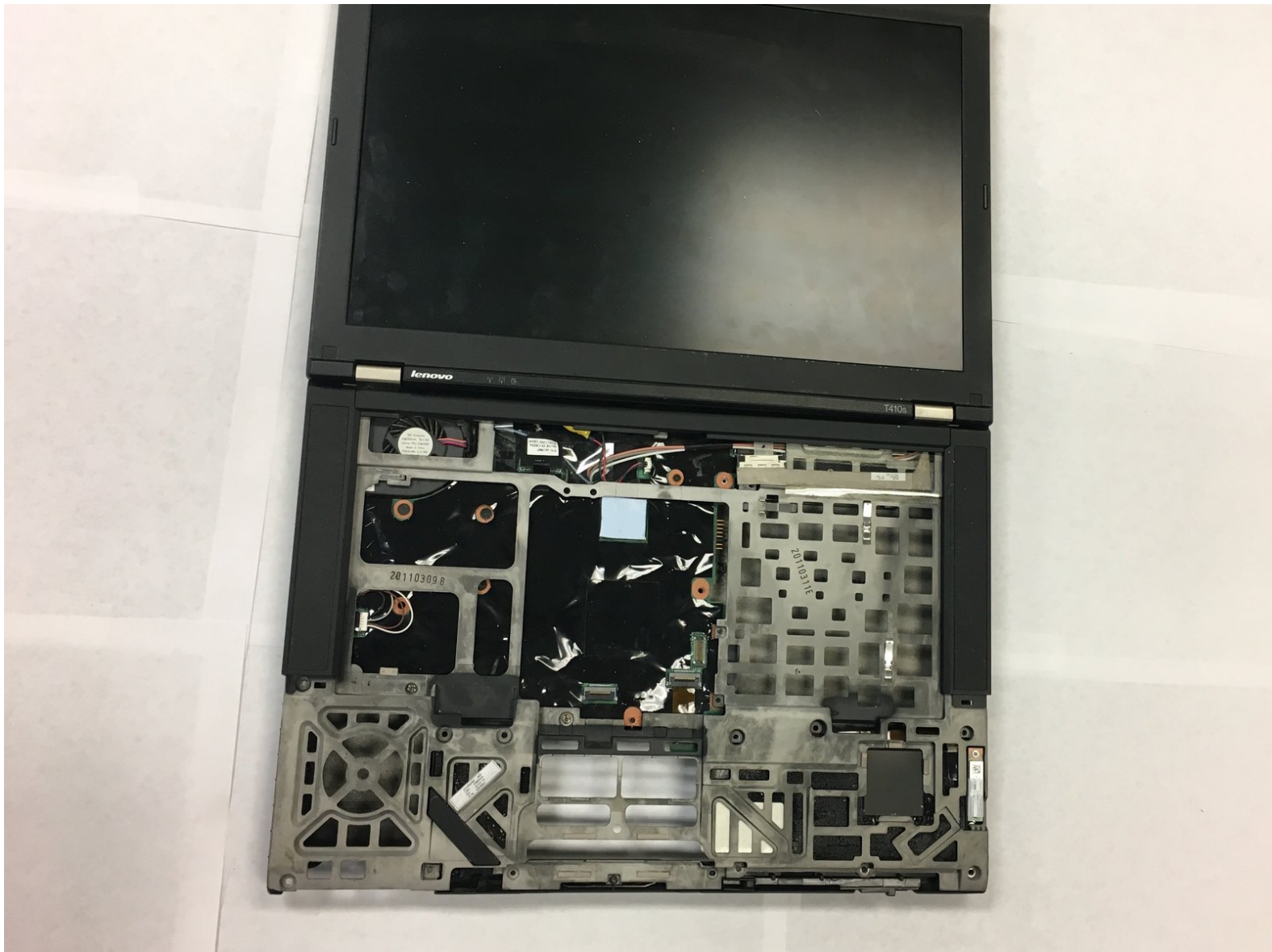




Lenovo ThinkPad T410s Palm-rest Replacement

Is your Lenovo ThinkPad T410s mouse not moving or frozen? You might want to replace your palm-rest, and this guide will help you replace it!

Written By: Nathan Barganier



INTRODUCTION

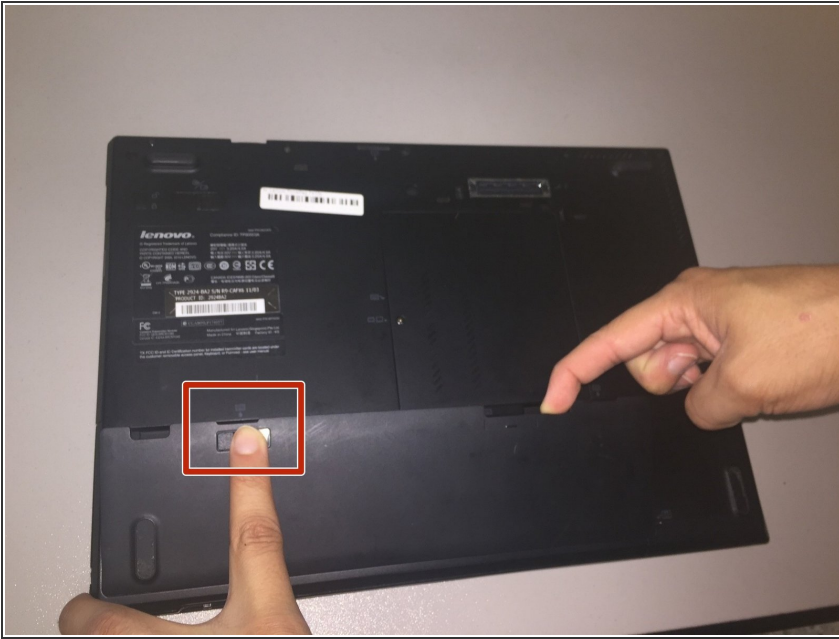
Is your Lenovo ThinkPad T410s mouse not moving or frozen? You might want to replace your palm-rest, and this guide will help you replace it!



TOOLS:

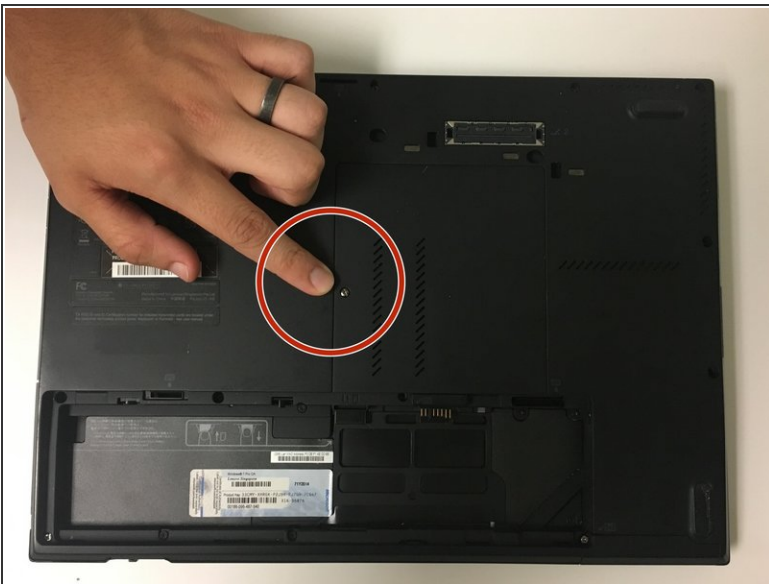
- [Phillips #0 Screwdriver](#) (1)
 - [Flathead 3/32" or 2.5 mm Screwdriver](#) (1)
 - [Spudger](#) (1)
-

Step 1 — Battery



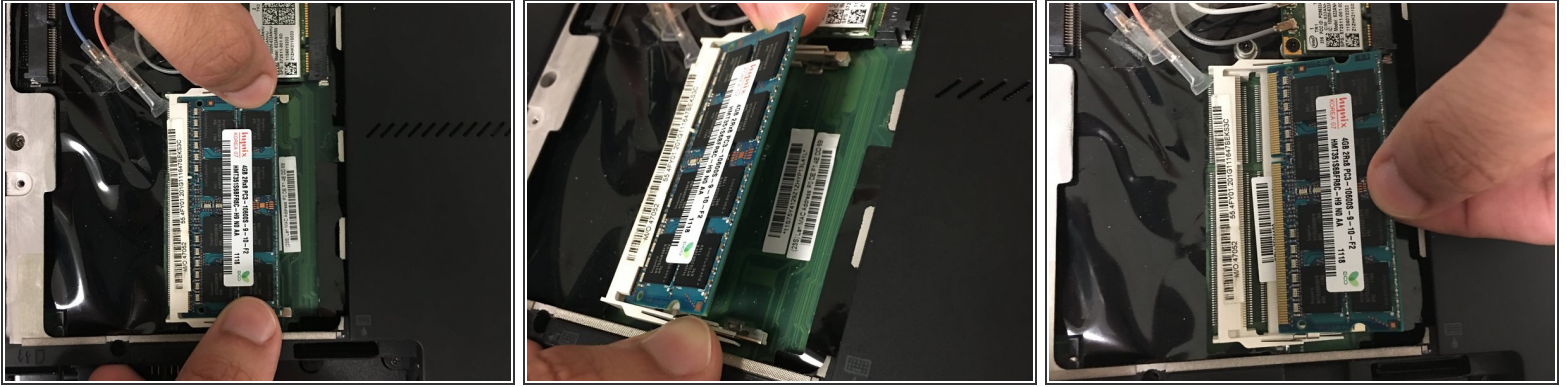
- Flip the laptop over.
- Push and hold the locking switch to the left.
- Pull the battery out with your other hand.

Step 2 — RAM



- Remove the single Phillips #0 screw from the back panel.
- Pull the back panel off.

Step 3



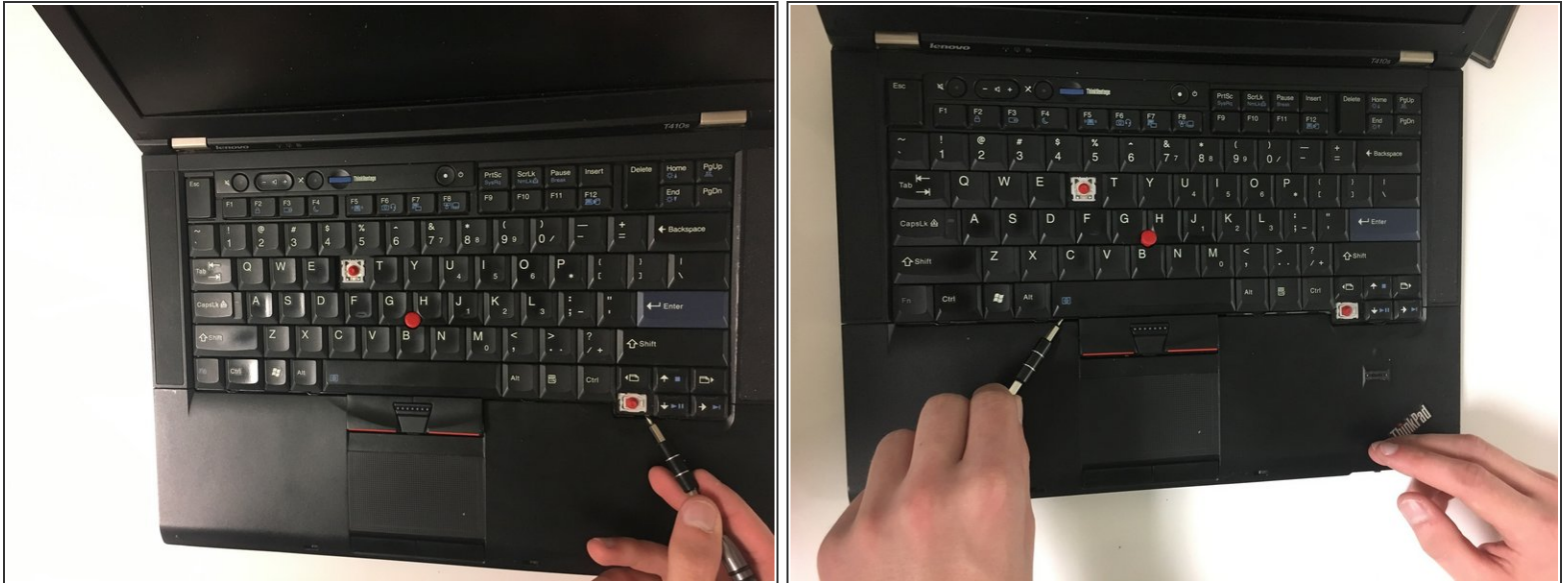
- Pull the metal prongs at the side of the RAM away from each other.
 - ❗ The RAM will pop out of its socket when done correctly.
- Pull the RAM out.

Step 4 — Keyboard



- Remove the Flathead 2.5mm screw.
- Flip the laptop over.

Step 5



- Wedge the flat end of a spudger, or plastic opening tool, under the end of the keyboard and pry up.

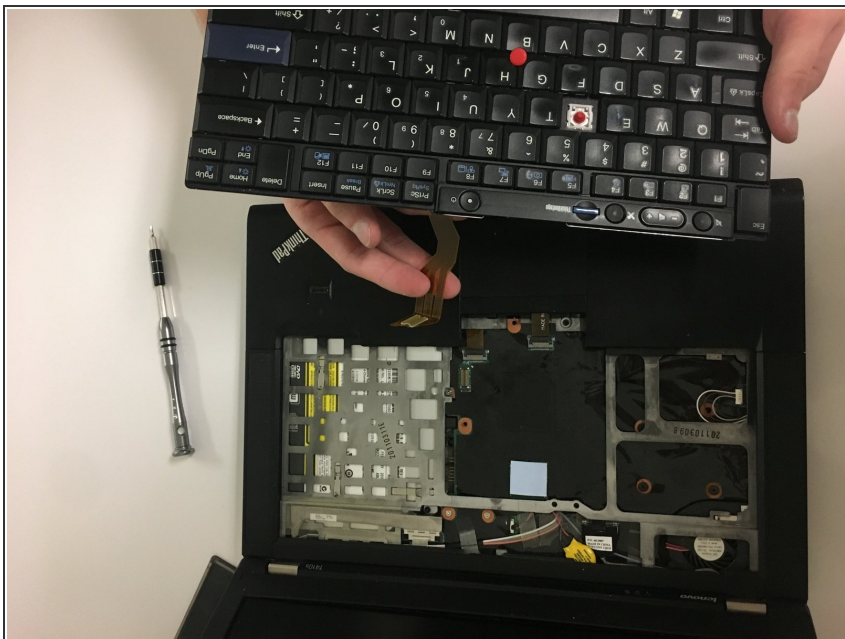
Step 6



- Slide the keyboard out of the way until you can see what's underneath it.

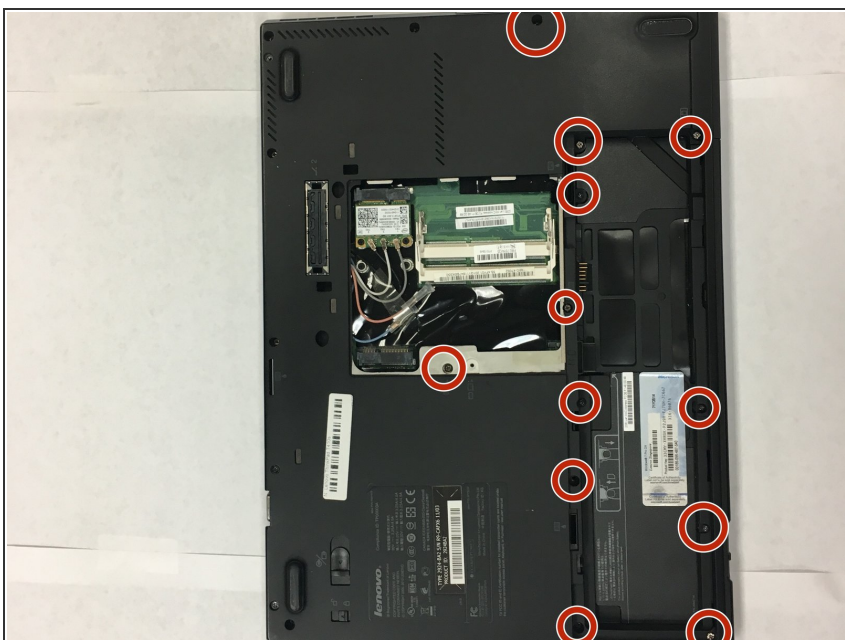
⚠ The keyboard is still attached with a ribbon cable so don't try to fully remove it.

Step 7



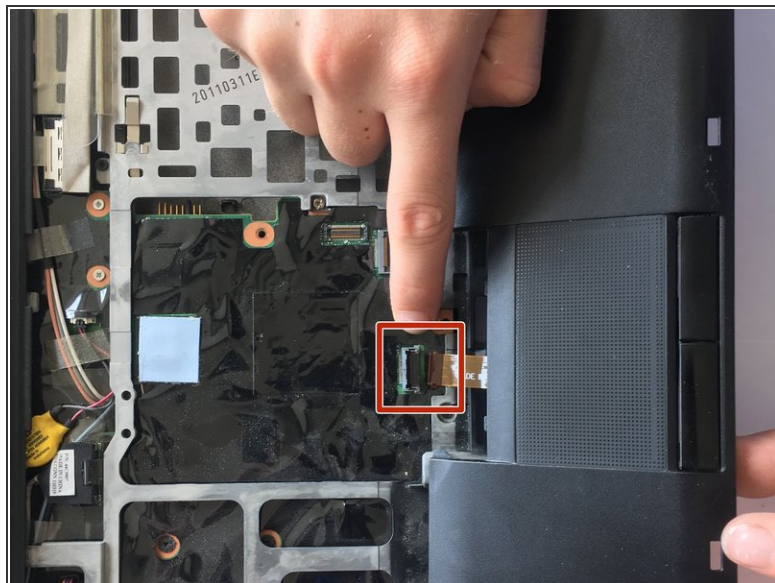
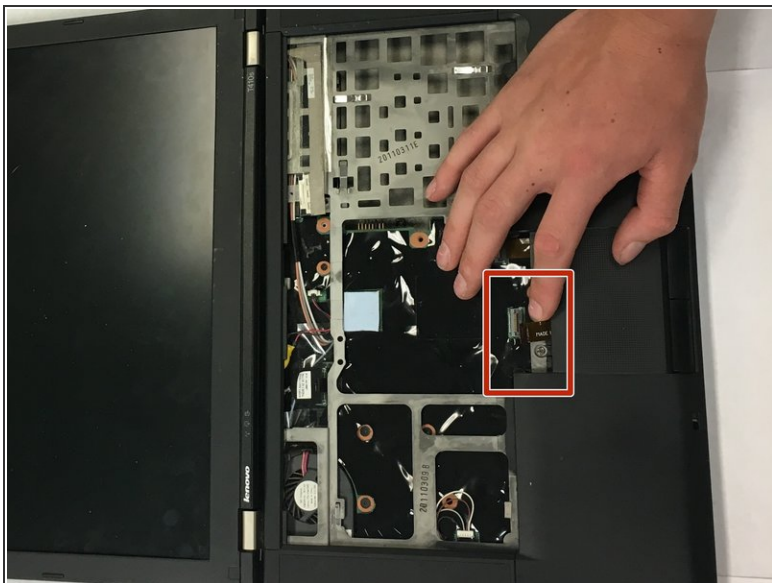
- Use the flat end of a spudger to unplug the keyboard connector from the laptop.
- Pull the keyboard out.

Step 8 — Palm-rest



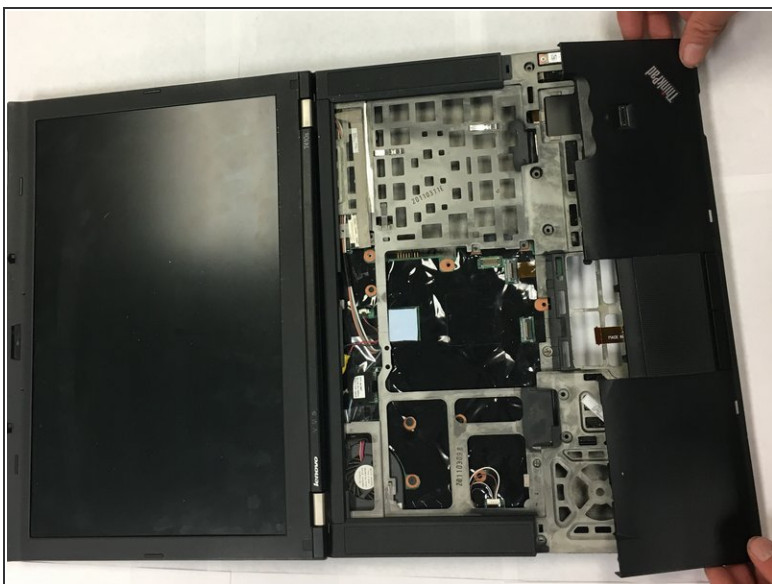
- Remove the twelve Phillips #0 screws from the back panel.

Step 9



- Up the flat end of a spudger to lift up the black tab on the ZIF connector.
- Pull out the ribbon connector from the ZIF connector.

Step 10



- Remove the palm rest from the laptop.

To reassemble your device, follow these instructions in reverse order.