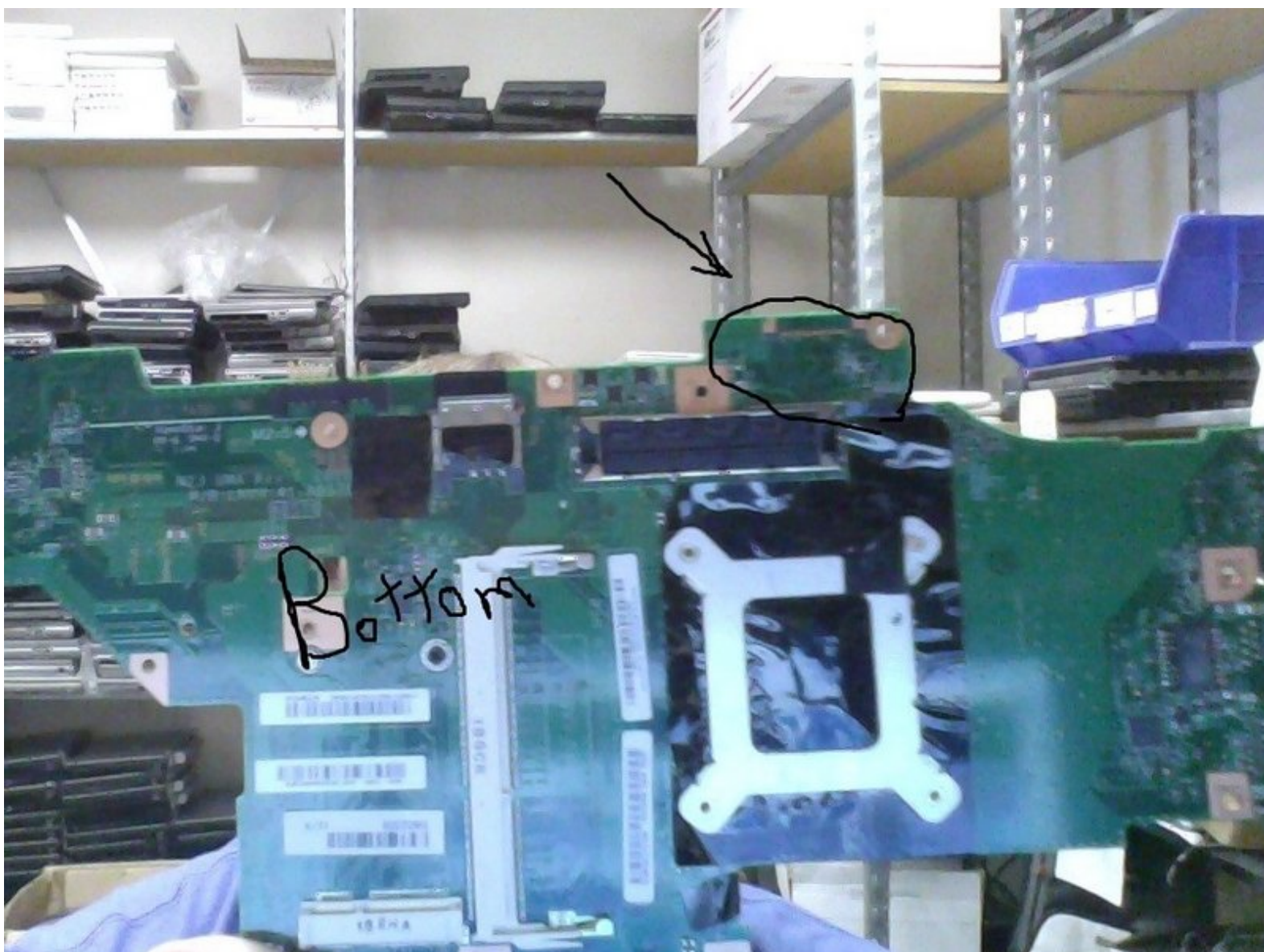




Lenovo ThinkPad T420s LCD Fuse Replacement

Most of the time when the screen becomes constantly dim/dark it is because the fuse is blown

Written By: Spofo9t9



INTRODUCTION

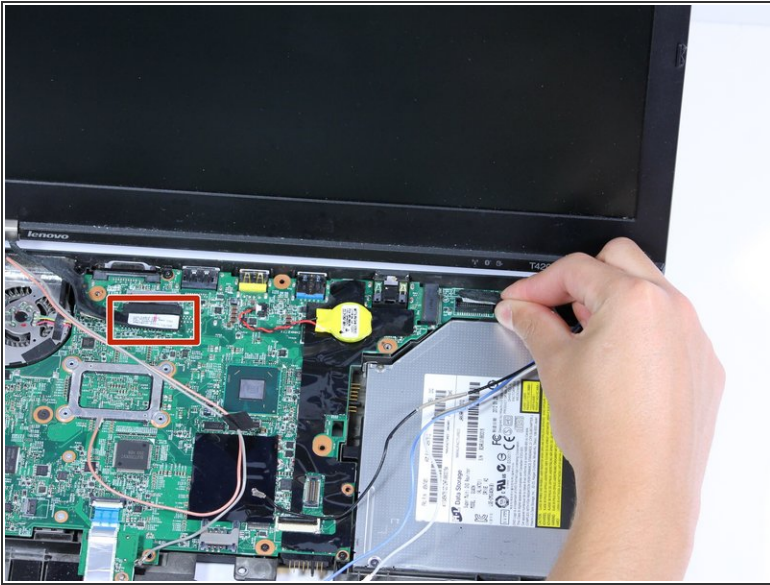
Most of the time when the screen becomes constantly dimm/dark it is because the fuse is blown



TOOLS:

- [Metal Spudger](#) (1)
 - [Phillips #0 Screwdriver](#) (1)
-

Step 1 — LCD



- Unplug the two black cables that connect the screen to the motherboard.

Step 2



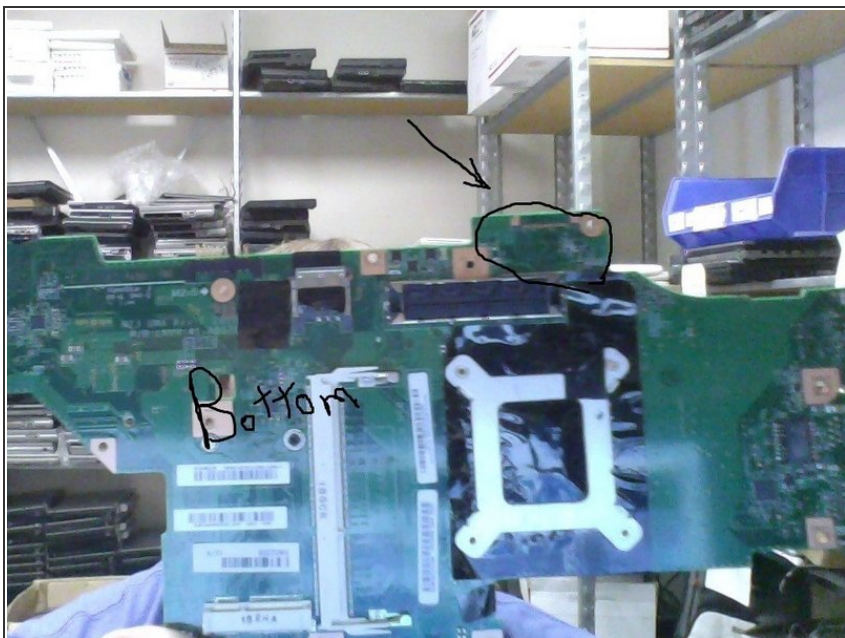
- Flip your laptop so the back-side is facing towards you.
- Remove any black stickers covering the screws using the nylon or metal spudger.
- Remove the two 7mm screws using the Phillips #0 screwdriver.

Step 3



- Remove the LCD screen unit by holding the sides and lifting it upwards.

Step 4 — Bottom of Motherboard



- you will need to take the tape of in order to get to the fuse

To reassemble your device, follow these instructions in reverse order.