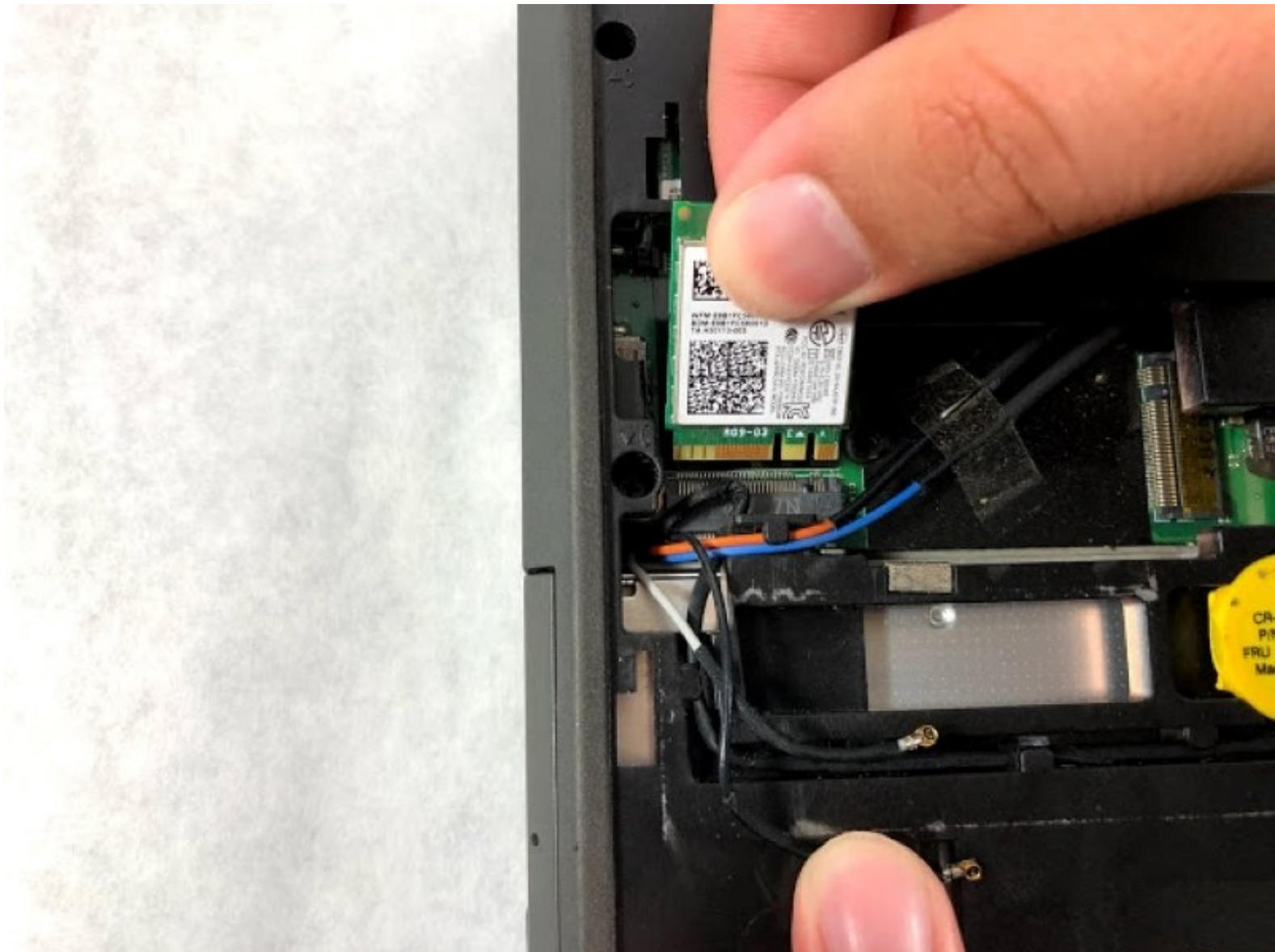




Lenovo ThinkPad T440p Wireless Adapter Replacement

How to replace the wireless adapter on your Lenovo ThinkPad T440p.

Written By: Christian Abad



INTRODUCTION

This guide requires some caution when removing the cables connected to the wireless adapter. Use a spudger and avoid using tweezers with metallic points as it could damage the cable. The remainder of the guide is simple and requires unscrewing a screw.



TOOLS:

- [Phillips #1 Screwdriver](#) (1)
 - [Phillips #0 Screwdriver](#) (1)
 - [Spudger](#) (1)
-

Step 1 — Battery



- Flip the laptop so that the back is facing up.

Step 2



- Slide the battery latches to the unlocked position.

Step 3



- Slide the battery pack out of the battery slot.

Step 4 — Back Cover



- Use a Phillips #1 screwdriver to remove the two 9mm screws holding the back cover.

Step 5



- Slide down the back cover.

Step 6



- Remove the back cover.

Step 7 — Wireless Adapter



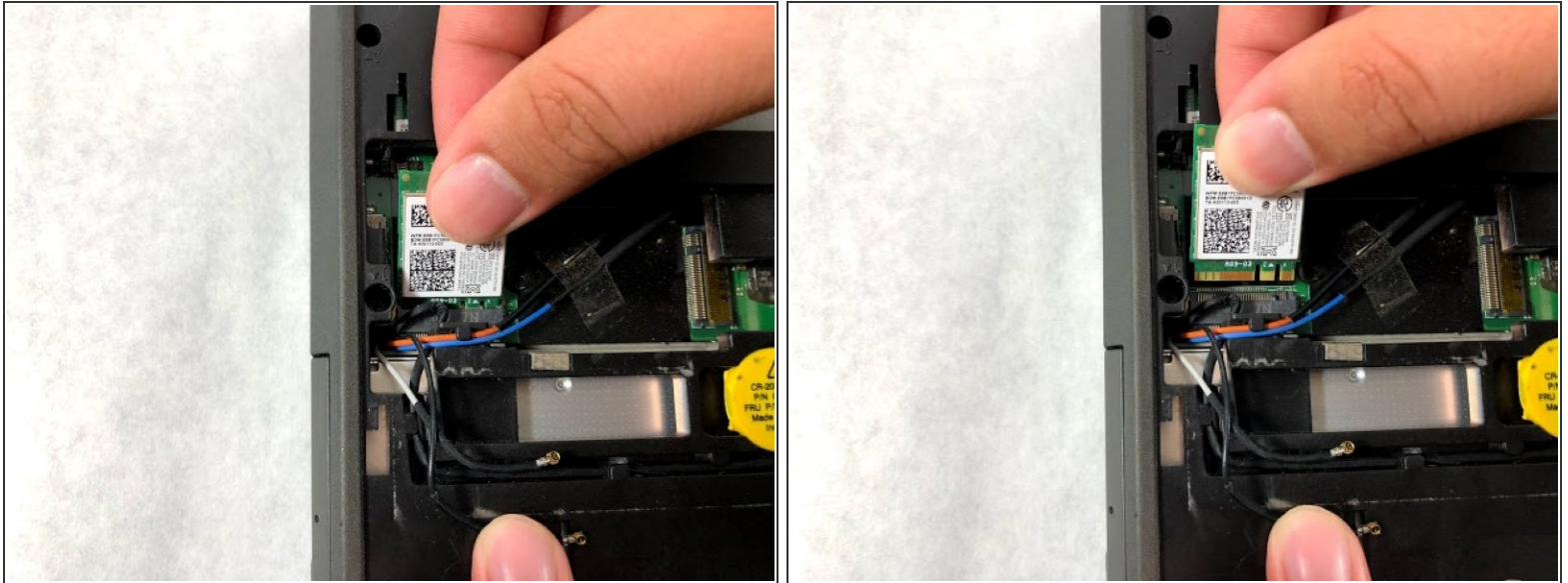
- Use the spudger to remove the two cables that are connected to the wireless adapter.

Step 8



- Use a Phillips #0 screwdriver to remove one 3 mm screw holding down the wireless adapter. Once it is done, the wireless adapter will move to an upward angle.

Step 9



- Remove the wireless adapter.

To reassemble your device, follow these instructions in reverse order.