



# Lenovo ThinkPad T460s Wi-Fi Card Replacement

How to replace the Wi-fi card in the Lenovo ThinkPad T460s.

Written By: keweï xia



---

## INTRODUCTION

If your Lenovo Thinkpad T460s([all modes](#)) is not stably connecting to the internet i.e. weak signals, or even unable to use the internet, use this guide to replace the WIFI module.

The WIFI module connects the laptop to the internet. A faulty WIFI module leads to weak signals or no signals at all.

Before using this guide, check your network status, make sure the connection problem does not come from your router.

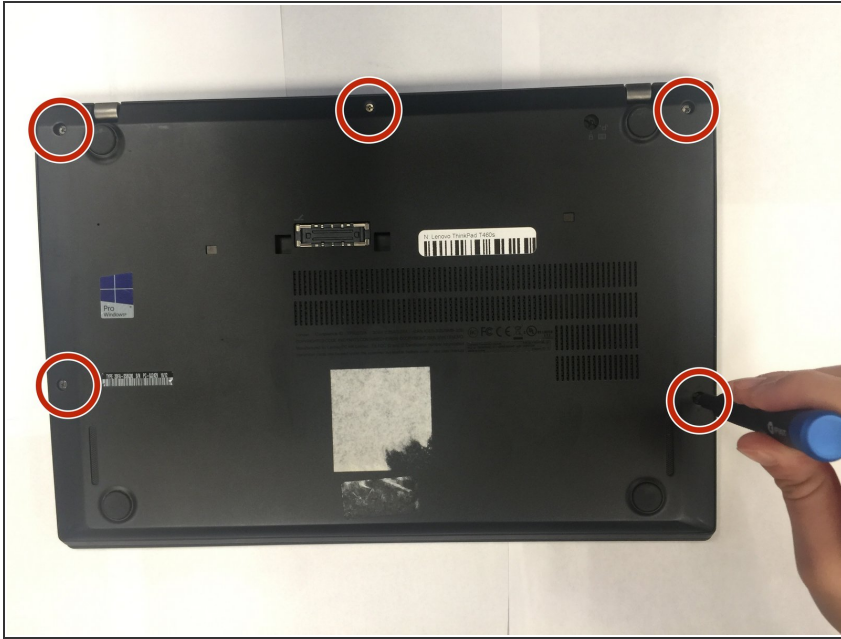
Before you begin, please carefully check your laptop completely power off and has no connection with external power source.



### TOOLS:

- [Phillips #1 Screwdriver](#) (1)
  - [ESD Safe Tweezers Blunt Nose](#) (1)
-

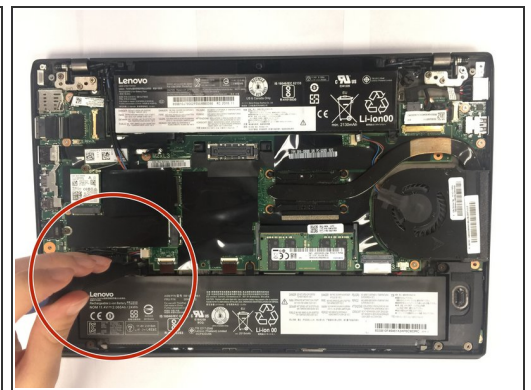
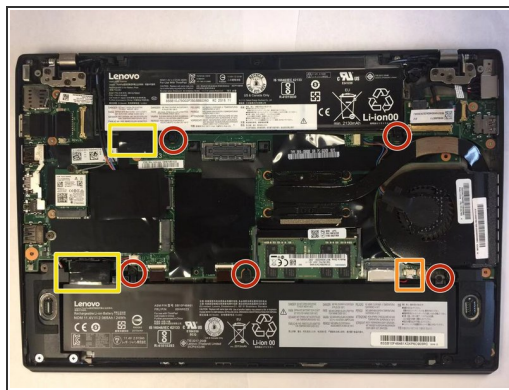
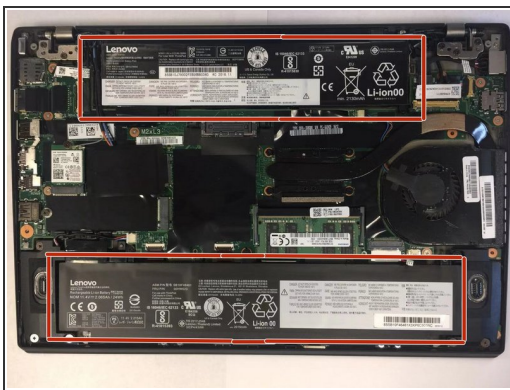
## Step 1 — Battery



- Remove all five 5.5mm Phillips #1 screws.

⚠ Note that these screws cannot be removed completely since all the screws have a retainer from the back.

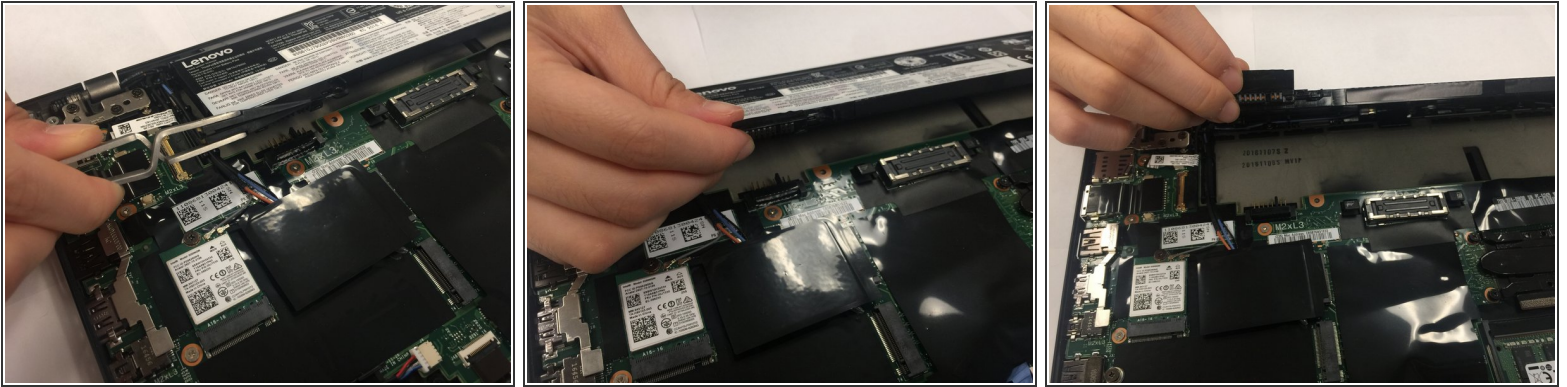
## Step 2



- Remove all five 5.5mm Phillips #1 screws.
- Unplug the battery from the device.
- These tabs are used to remove the battery.



### Step 3



- Remove the batteries from the device.

### Step 4 — Wi-Fi Card



- Disconnect the gray and black cables from the Wi-Fi card.
- Remove the 3mm Phillips #1 screw on the chip.
- Remove the Wi-Fi card from the device.

To reassemble your device, follow these instructions in reverse order.