



Lenovo ThinkPad T580 Motherboard Replacement

This guide will show how to replace the motherboard in a Lenovo ThinkPad T580.

Written By: Ben Elkayam



INTRODUCTION

Welcome to the motherboard replacement guide for the Lenovo Thinkpad T580.

This guide will detail the steps necessary to replace the motherboard.

The most common reasons why this component would need to be replaced is because:

- The computer powers on but doesn't "turn on"
- The computer does not power on
- Your BIOS indicates your motherboard or integrated component is damaged

There are no specialized skills required for replacing the motherboard.



TOOLS:

- [Phillips #000 Screwdriver](#) (1)
 - [iFixit Opening Picks set of 6](#) (1)
 - [Spudger](#) (1)
-

Step 1 — External Battery



- Arrange the laptop so it is upside-down and the front is facing away from you. This will get the battery directly in front of you.

Step 2



- Pull the slides away from the center of the laptop to release the battery.

Step 3




- Pull the battery directly out of the socket.

Step 4 — Bottom Case



- Using a Phillips #000 screwdriver, unscrew eight 3.3 mm screws on the bottom of the laptop.

 The screws will not come out of the case.

Step 5



- Run a plastic opening pick along the crease of the computer all the way around.
- Once all the clips are released, remove the bottom cover.

Step 6 — Internal Battery



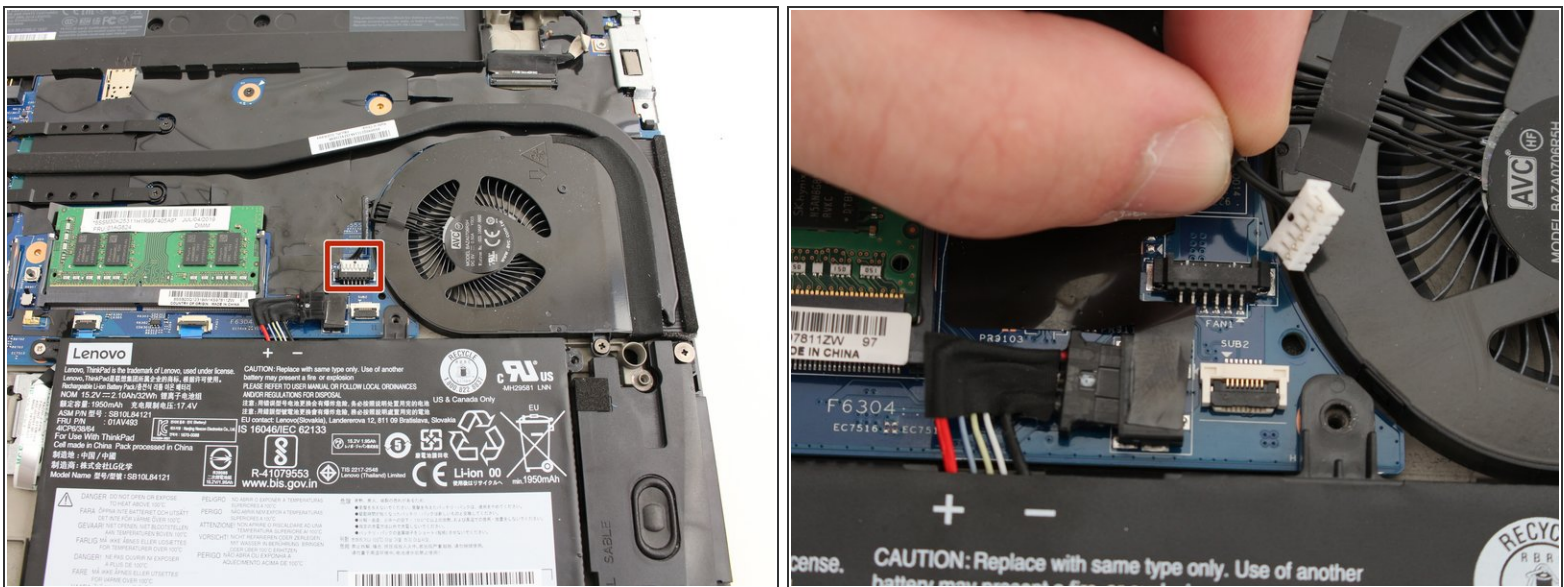
- Using a Phillips #000 screwdriver, remove five 3.7 mm screws holding down the battery.

Step 7



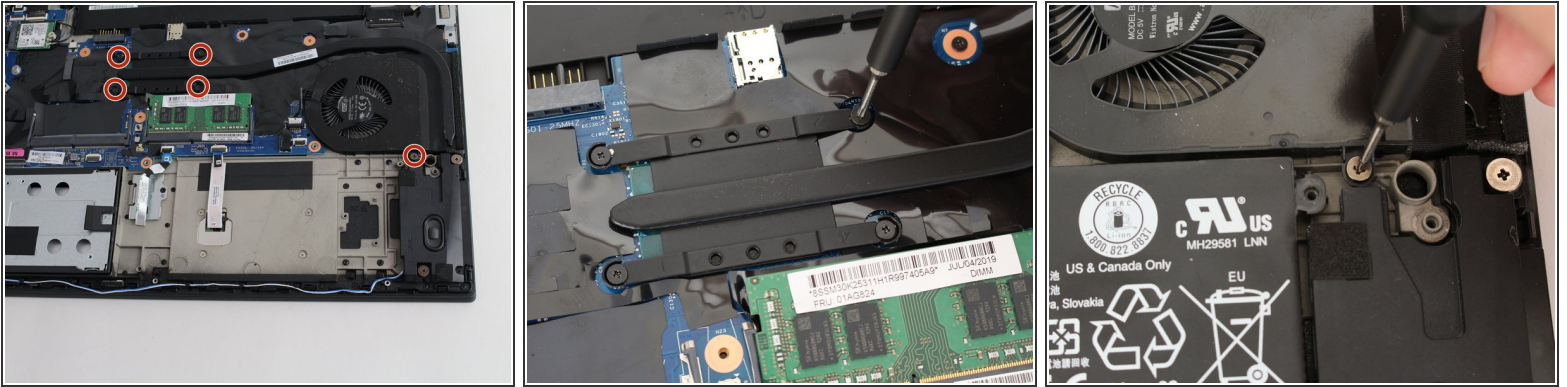
- Unplug and remove the battery connector from the motherboard.
- Remove the internal battery.

Step 8 — Cooling Fan



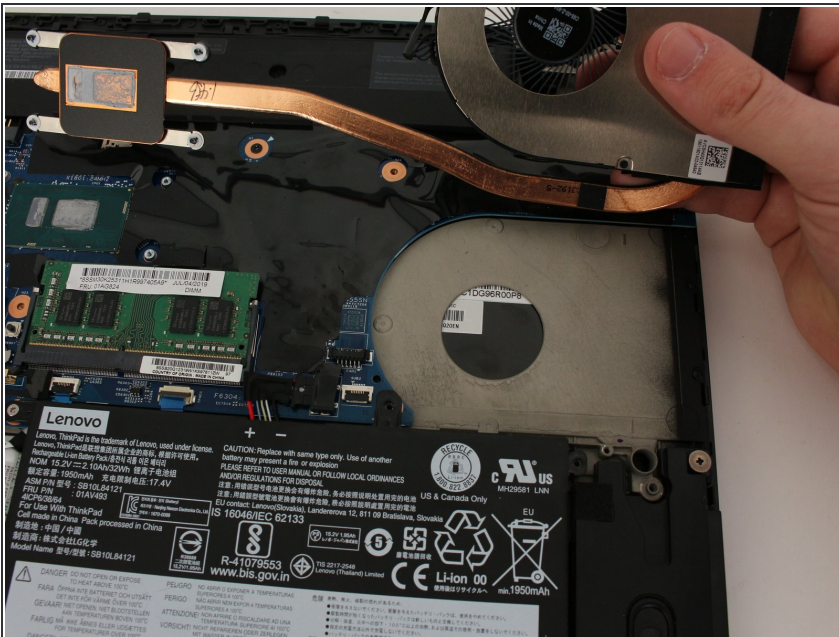
- Unplug the cooling fan's cable from the the motherboard.

Step 9



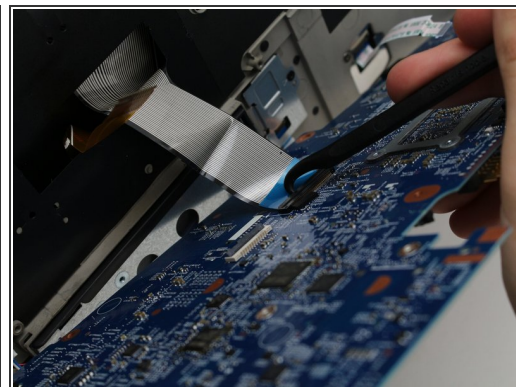
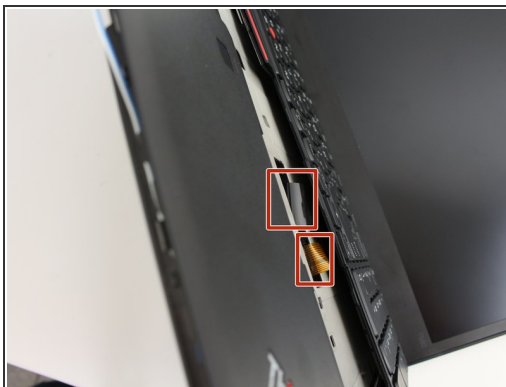
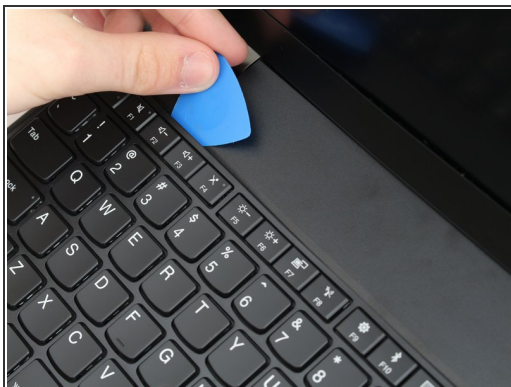
- Using a Phillips #000 screwdriver, unscrew five 4.6 mm screws fastening the fan and cooling pipe.
- ⓘ The screws are set in the plastic and are not able to be removed from the fan parts.

Step 10



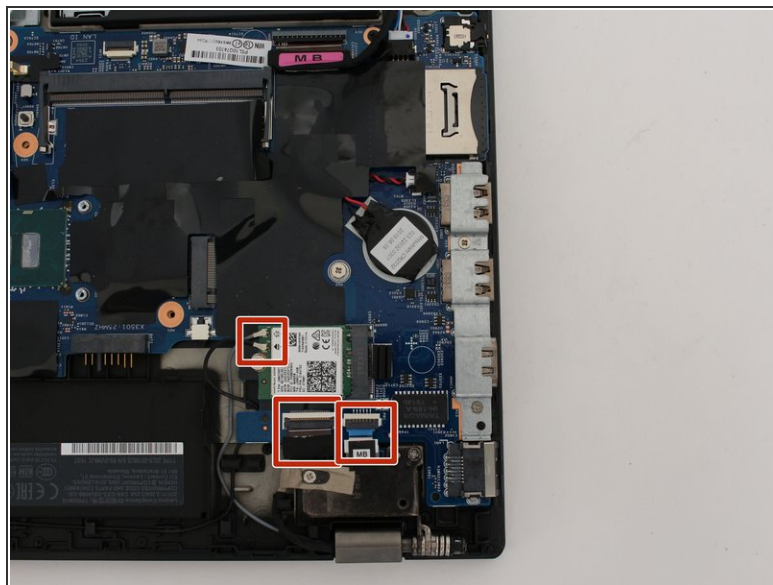
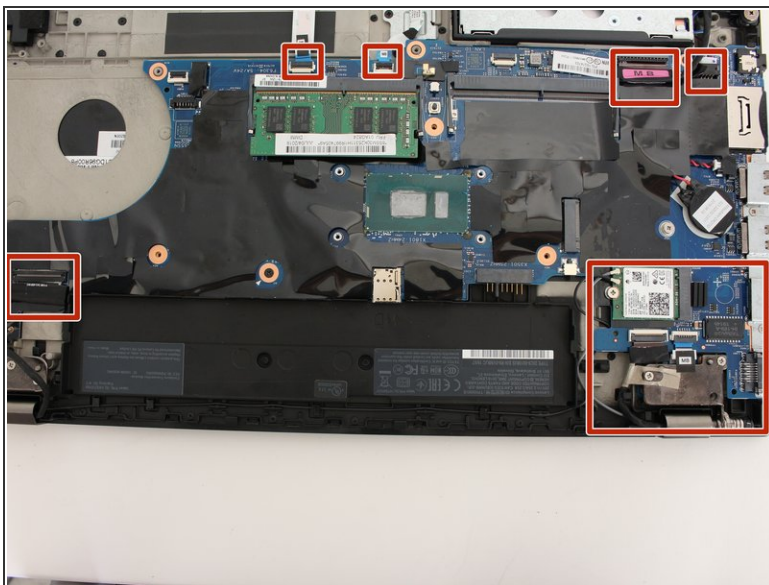
- Remove the cooling fan directly upwards from the core.

Step 11 — Motherboard



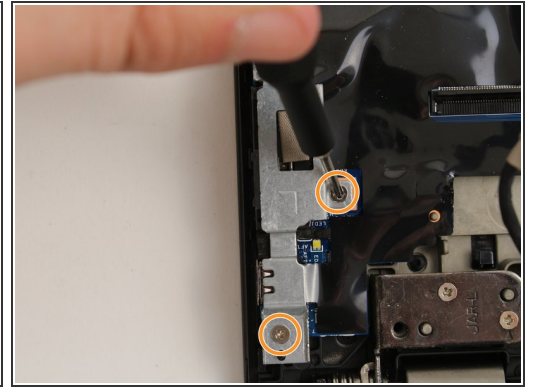
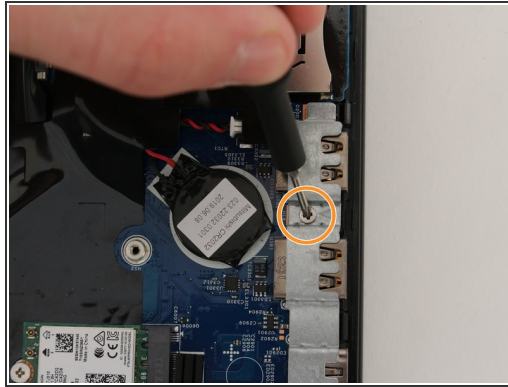
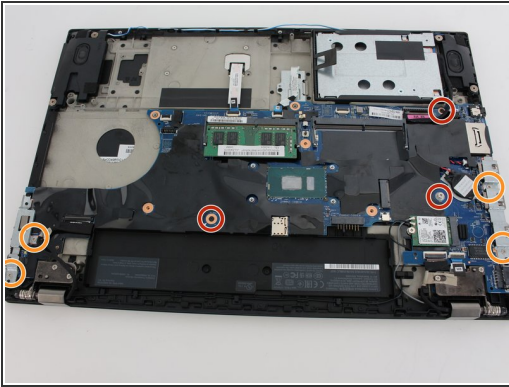
- Remove the keyboard by popping out the back with an opening pick.
- Disconnect the keyboard and nipple cable.

Step 12



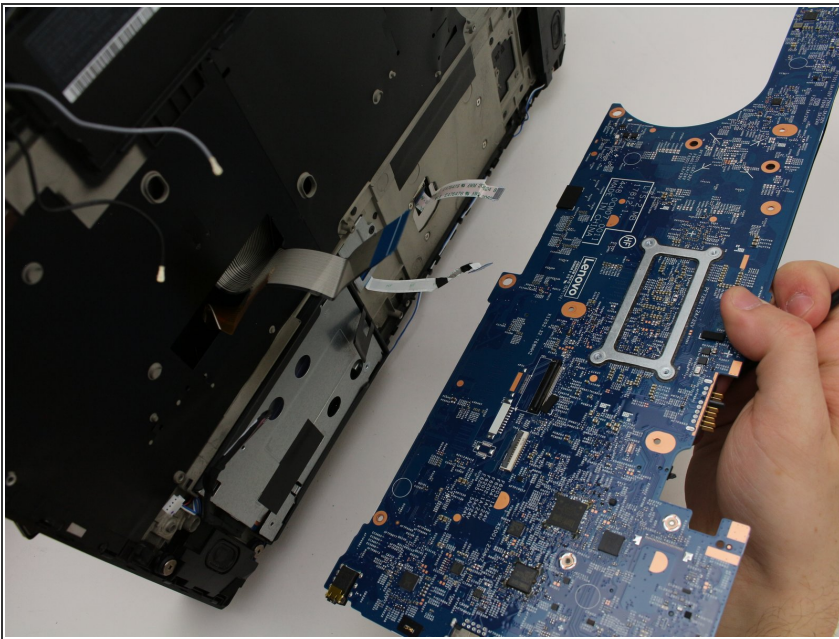
- Disconnect all the attached cables.

Step 13



- Using a Phillips #000 screwdriver, unscrew the three 3.3 mm motherboard screws.
- Using a Phillips #000 screwdriver, take out the port clamps and the three 3.6 mm screws.

Step 14



- Remove motherboard from the computer.

To reassemble your device, follow these instructions in reverse order.