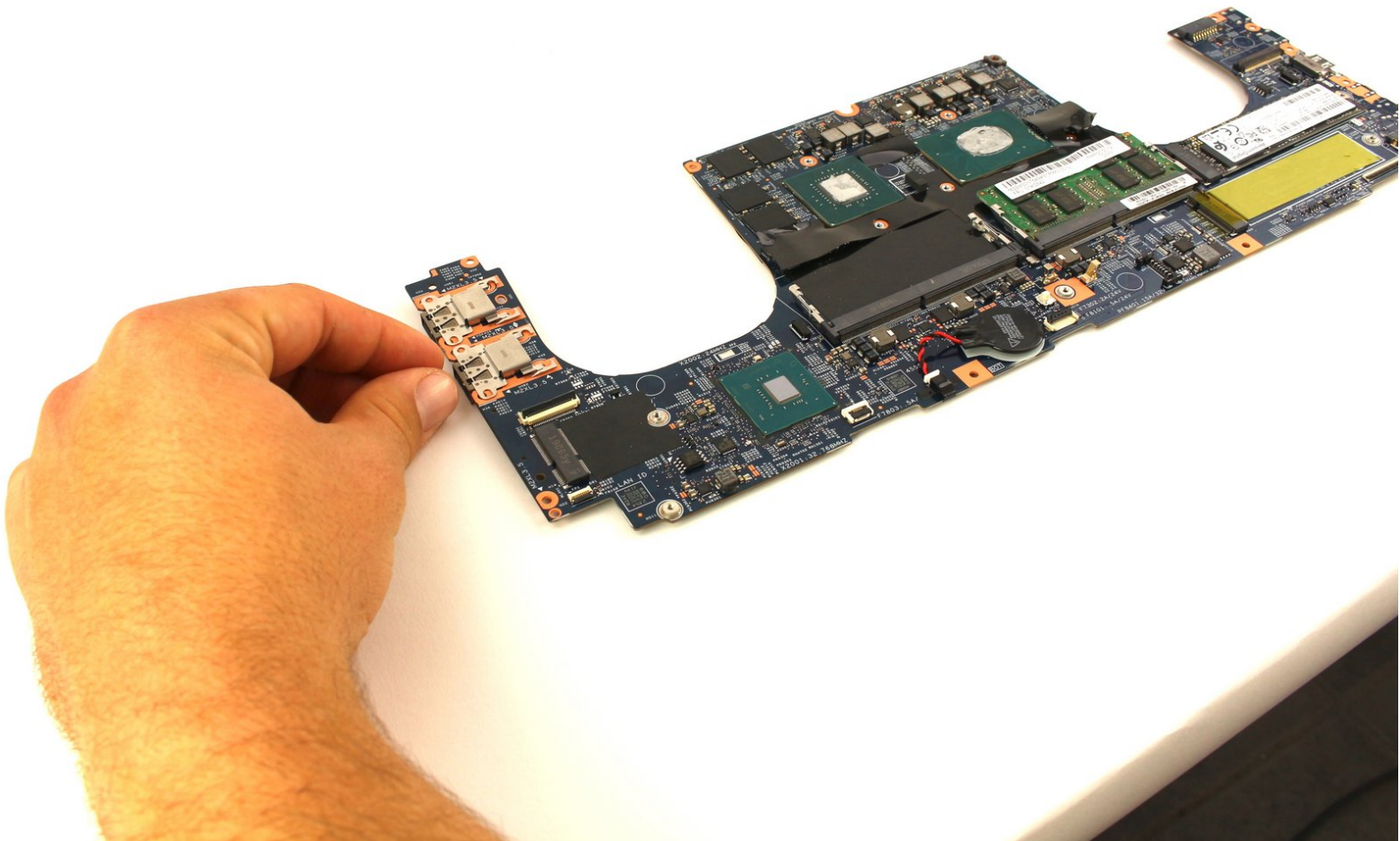




Lenovo ThinkPad X1 Extreme Docking Station Replacement

In this guide, you will be able to locate, remove and replace the docking stations in your Lenovo ThinkPad X1 Gen 1 Extreme.

Written By: Beckham Richmond



INTRODUCTION

Before beginning this guide, you must complete the battery, fan, and motherboard guide.

In this tutorial, you will be handling the motherboard and its components. For this reason, it is important to be sure that your hands are not wet or oily. Moisture could cause unwanted damage to your device.

Indications of a faulty or broken docking station include,

- Not registering inputs
- Loses connection randomly
- Moves out of place when touched

Before replacing the battery, refer to the [troubleshooting page](#) for the Lenovo ThinkPad Gen 1 Extreme to see if the problem is fixable without purchasing and installing another battery.

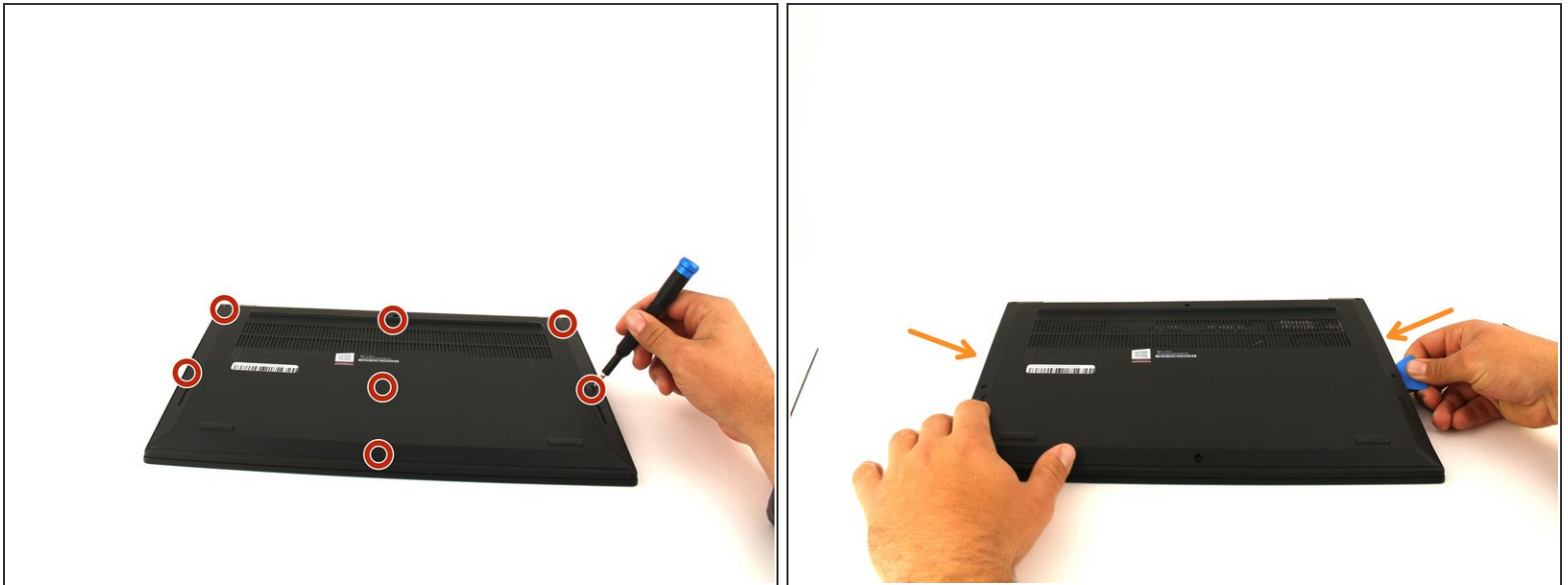
The docking station is the port where you might plug in a USB or a cable to charge your phone. These ports are susceptible to debris and other foreign materials that could damage it.



TOOLS:

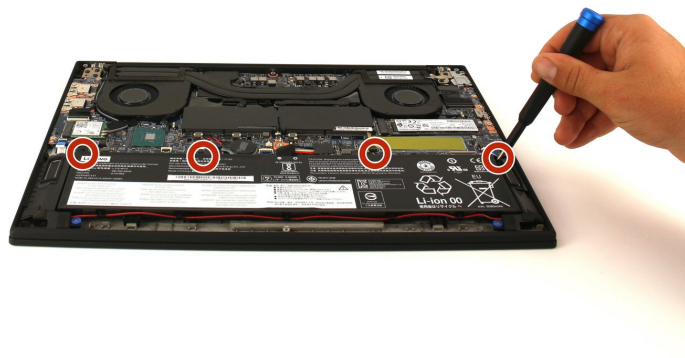
- [iFixit Precision 4 mm Screwdriver Bit](#) (1)
 - [Phillips #00 Screwdriver](#) (1)
 - [iFixit Opening Picks set of 6](#) (1)
 - [Tweezers](#) (1)
-

Step 1 — Battery



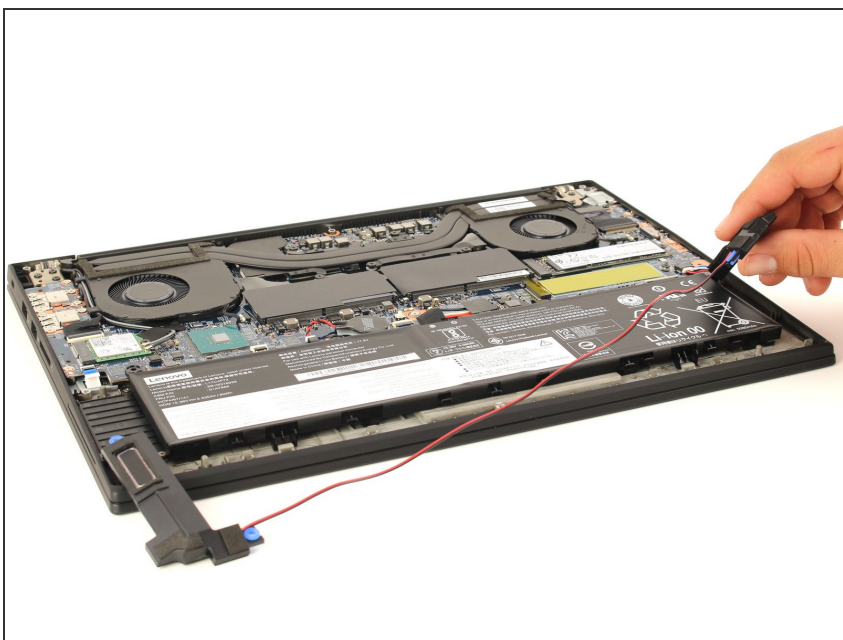
- Orient the laptop so that it is bottom up, and the track pad is closest to you.
- Unscrew the seven cover screws with a Phillips #00 head screwdriver. These screws will loosen, but will stay attached to the cover.
- Slide the blue opening pick along the side of the laptop and pry off the one clip on each side.
- The cover should easily come off.

Step 2



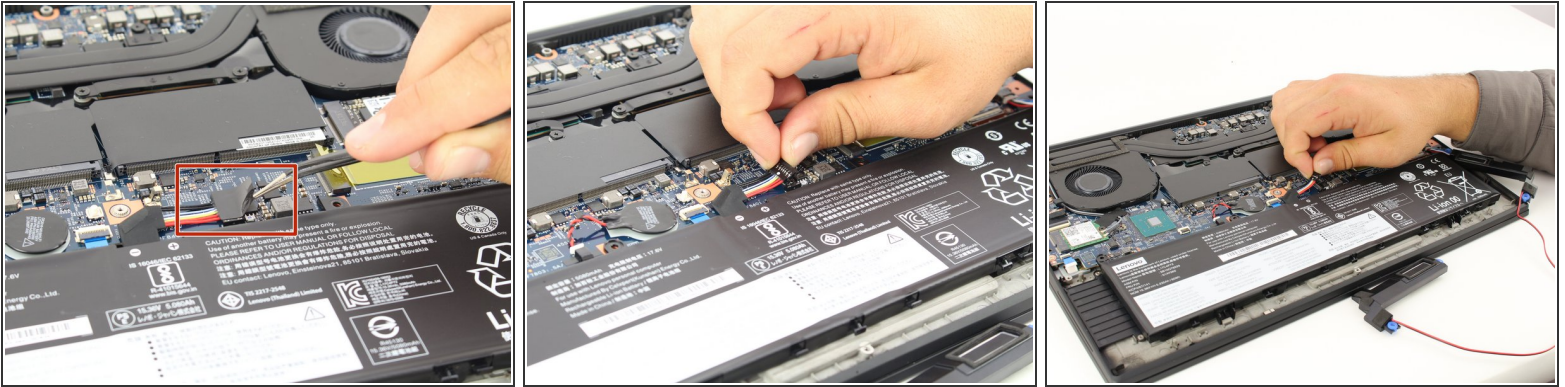
- Use a Phillips #00 head screwdriver to remove the four, 4mm screws above the battery.

Step 3



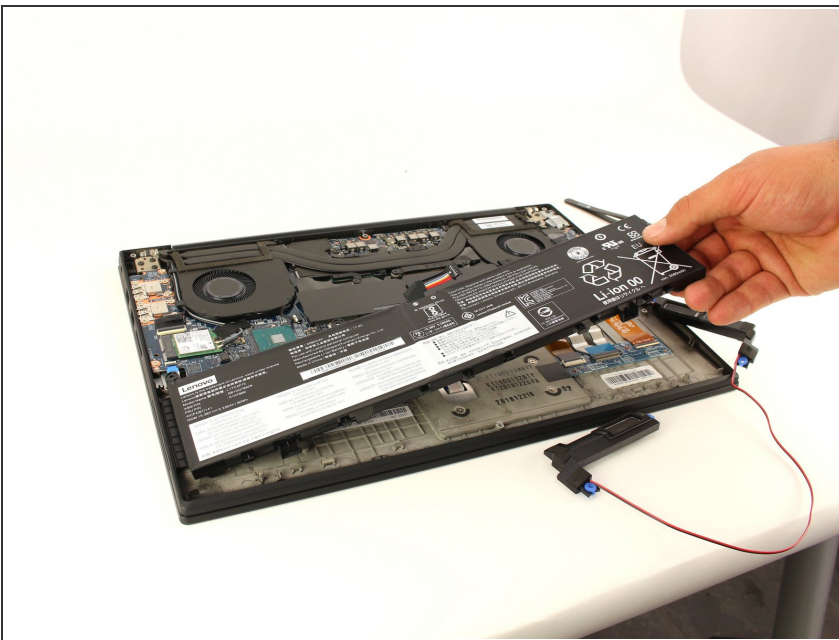
- Lift the connector to the left of the battery out of its pegs, and unwind the cable from the front of the battery.
- Set the connector out of the way of the battery.

Step 4



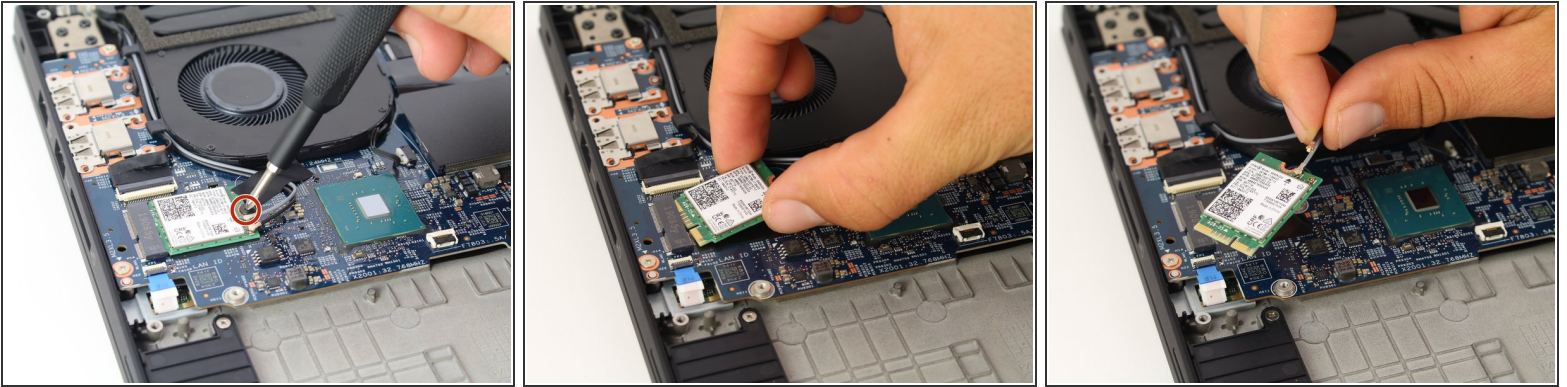
- Using tweezers, peel the plastic cover off the connector.
- Lift the clip on top of the connector, push towards the right of the computer and lift up carefully.
- After the connector is removed, check to see that it is labeled "Bat 1" on the motherboard, underneath the connector.

Step 5



- Lift the battery out of the frame and remove it from the device.

Step 6 — Fan



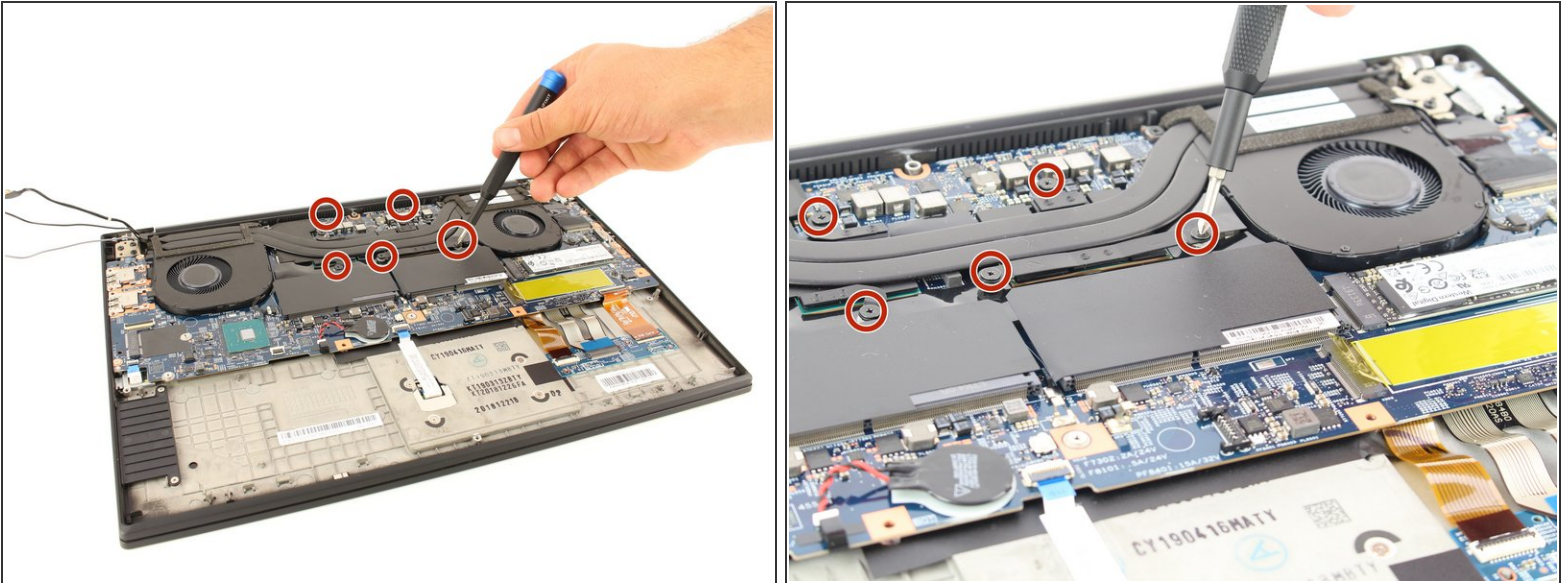
- Unscrew the 3mm screw holding down the wireless adapter using a Phillips #00 screwdriver.
- Slide the adapter out of its connector.
- Detach the black and gray cables and separate them from the frame of the fan by gently pulling upwards.

Step 7



- Unlatch and remove the cable connecting to the frame of the fan by flipping the thin black tab up.
- Separate the cable from the frame of the fan.

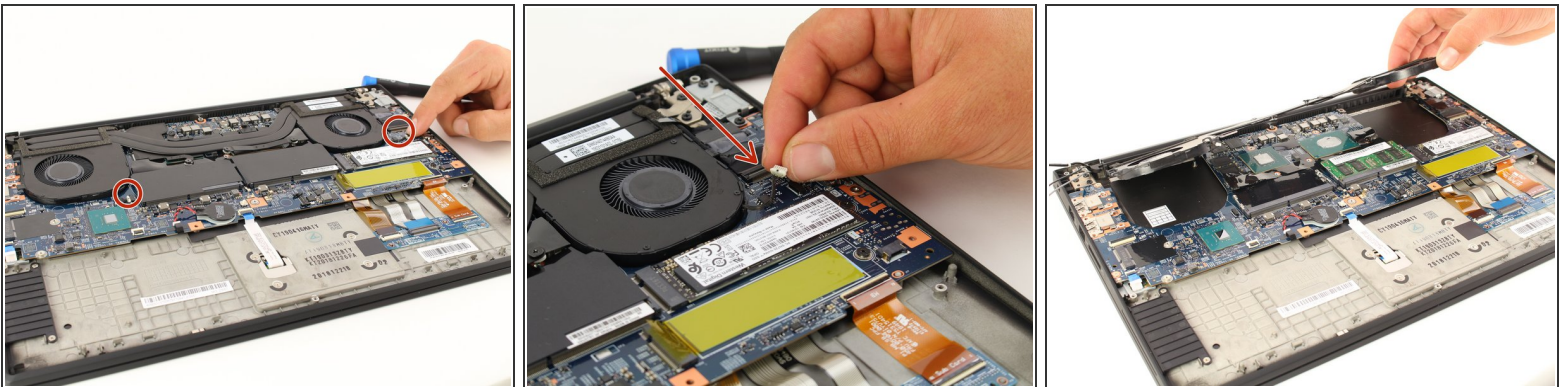
Step 8



- Loosen the five screws connecting the fan to the motherboard using a Philips #00 head screwdriver.

i These screws will not come out and will stay connected to the fan.

Step 9

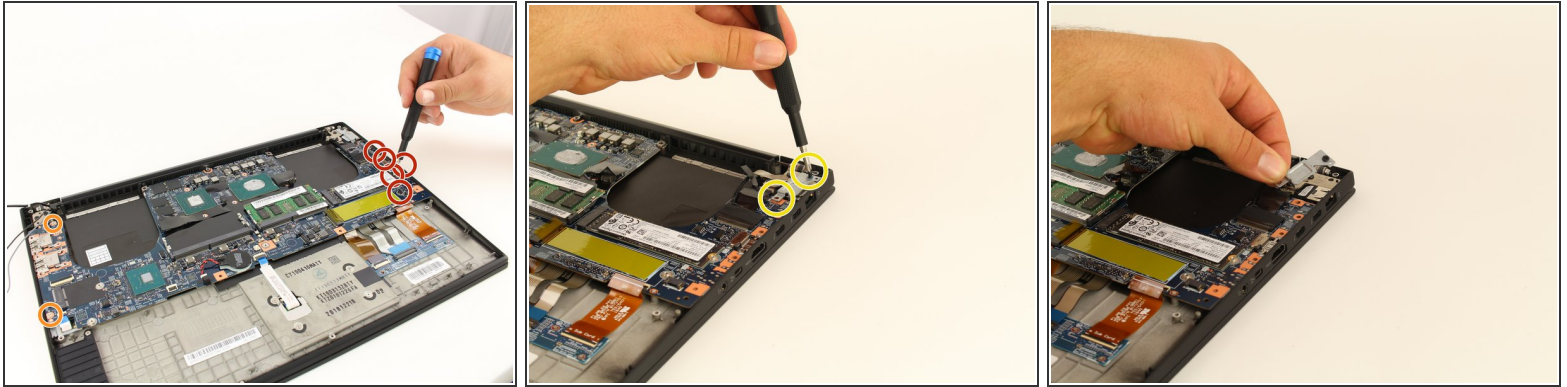


- Gently disconnect the two cables located on right and left side of the fan.

i To identify these, they are labeled "FANR1" and "FANL2" on the motherboard.

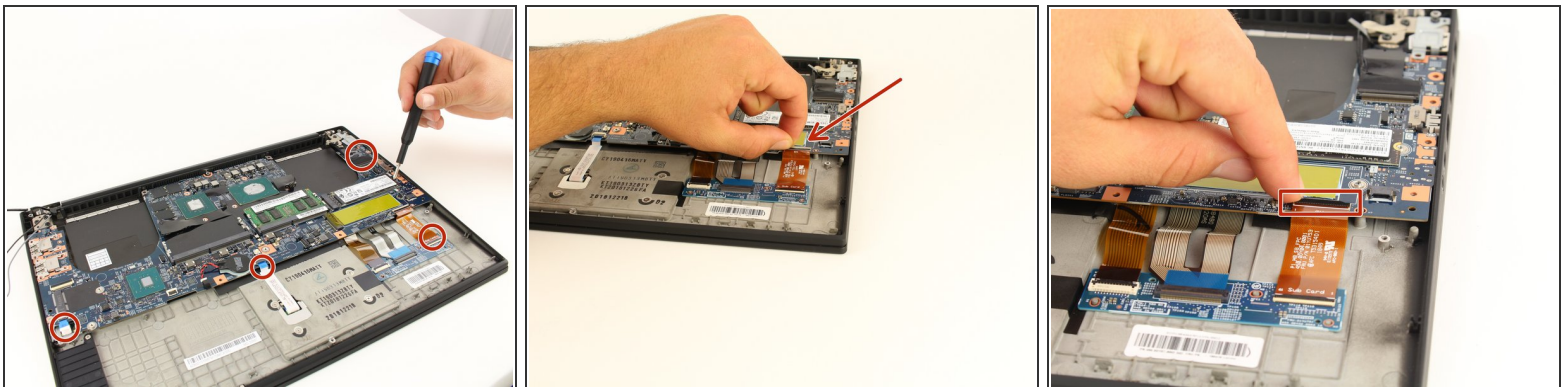
- Lift the fan up and out and remove it from the device.

Step 10 — Motherboard



- Using the Phillips #00 head screwdriver, remove the five 4mm screws below the charging port, holding down the motherboard.
- Remove the two 3mm left most screws.
- Remove the two 5mm screws that are holding down a silver plate on the charging port in the top right.
- Remove the silver plate on top of the charging port. This is needed so that the mother board may be removed.

Step 11



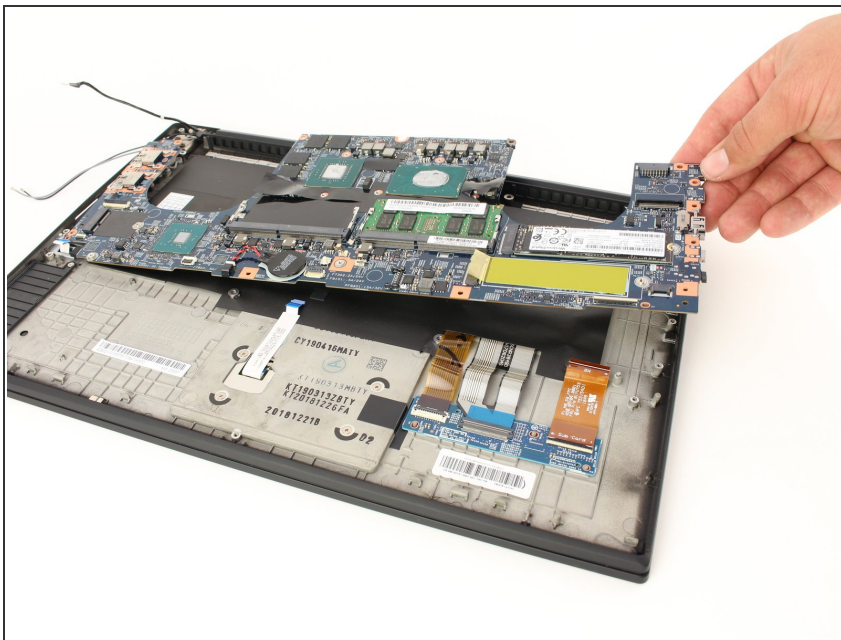
- Disconnect all the ribbon wires from the motherboard.
- All ribbon wires can be disconnected by flipping up the thin black tab at their connection points, and pulling the ribbon out.

Step 12



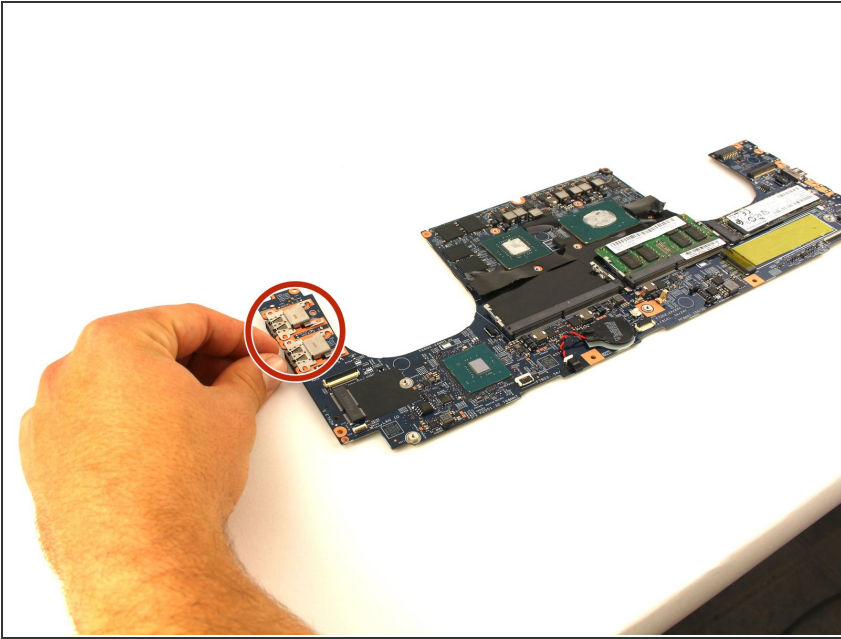
- Disconnect the black attachment at the top right corner of the motherboard.
- Insert the SIM eject bit into the small hole on the top and apply a small amount of pressure to release the clip.
- While maintaining pressure, gently pull on the wire that is connected to it to remove it.

Step 13



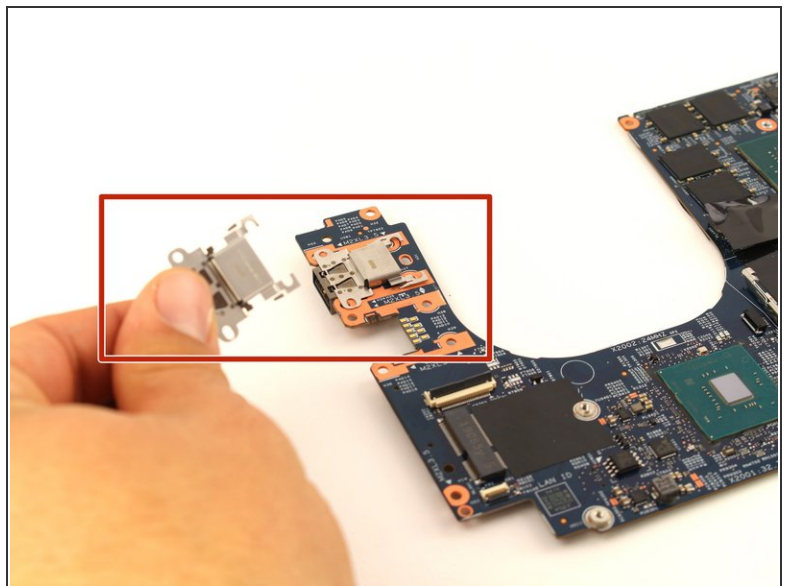
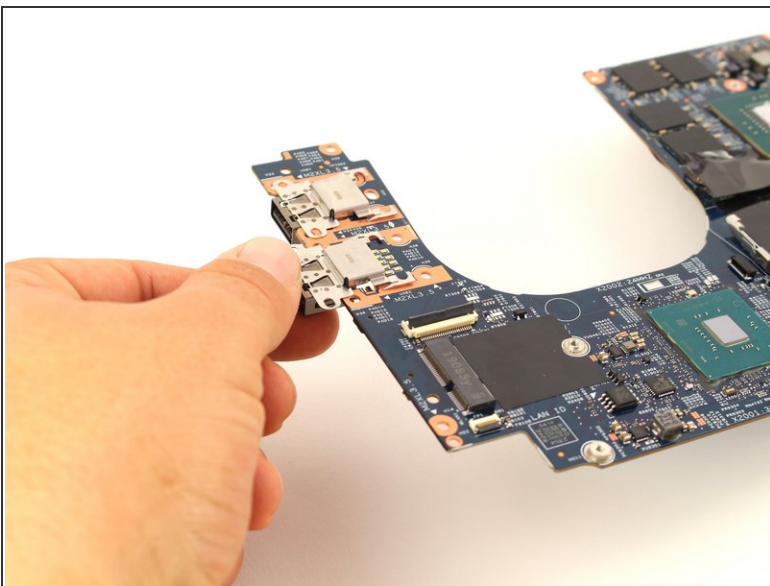
- Gently lift the motherboard out of the computer.

Step 14 — Docking Station



- Once you have the motherboard removed, you now have access to the docking stations.

Step 15



- Gently push the docking station towards the center of the motherboard, lift up to release a lock, then pull it out to remove it from the device.

To reassemble your device, follow these instructions in reverse order.

This document was generated on 2020-03-25 11:54:19 PM (MST).

