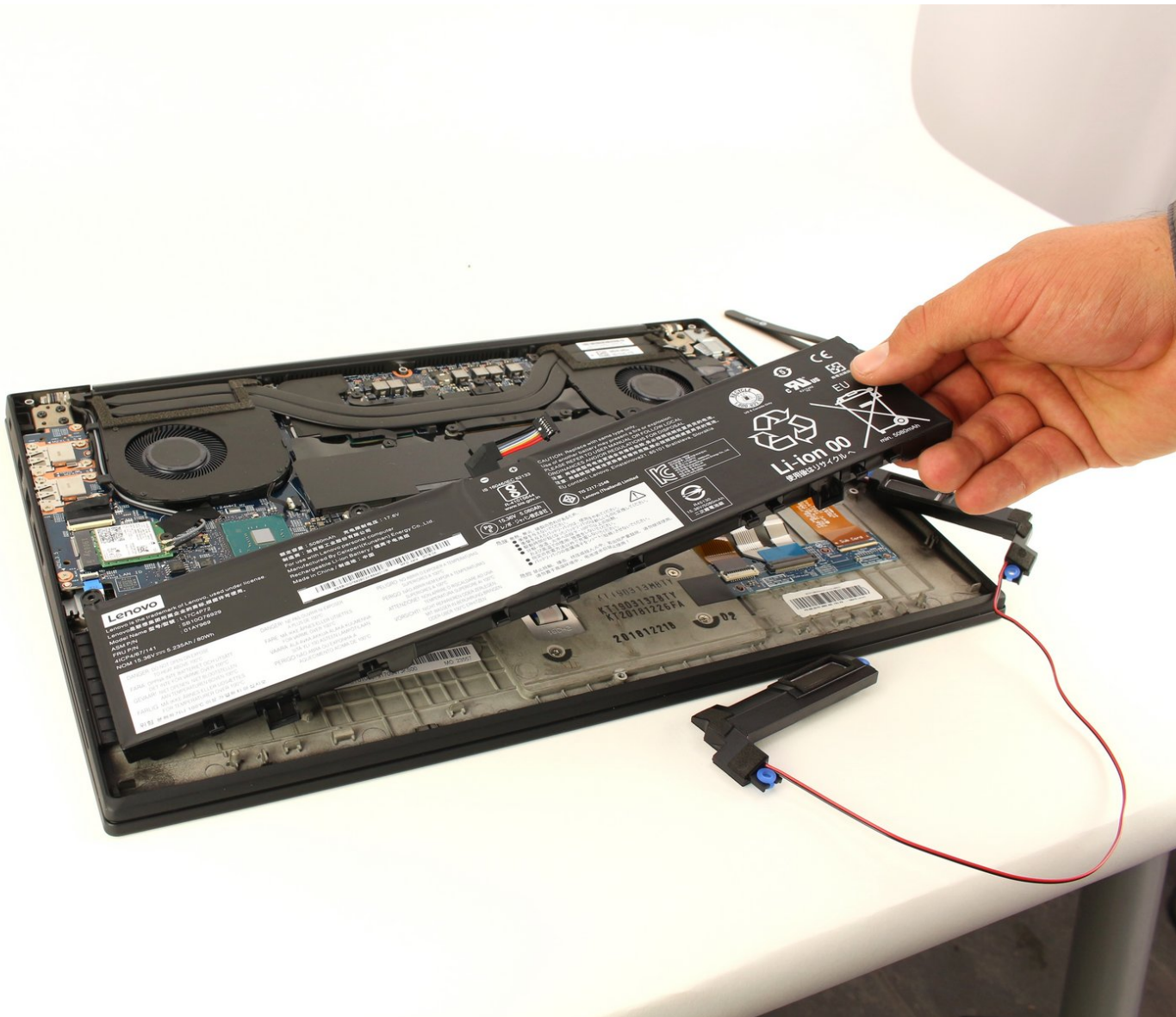




Lenovo ThinkPad X1 Gen 1 Extreme Battery Replacement

In this tutorial, you will be able to locate, remove, and replace the battery in your Lenovo ThinkPad X1 Gen 1 Extreme.

Written By: Beckham Richmond



INTRODUCTION

If your Lenovo ThinkPad X1 Gen 1 Extreme (model number 20MF-000LUS) is having trouble charging, overheating, or not holding a charge, use this guide to replace the battery pack.

A battery in good condition will power the computer for 15 hour periods and charge to 80% capacity in an hour. A faulty battery will not charge properly and will lose power quicker than expected.

Before replacing the battery, refer to the [trouble shooting page](#) for the Lenovo ThinkPad Gen 1 Extreme to see if the problem is fixable without purchasing and installing another battery.

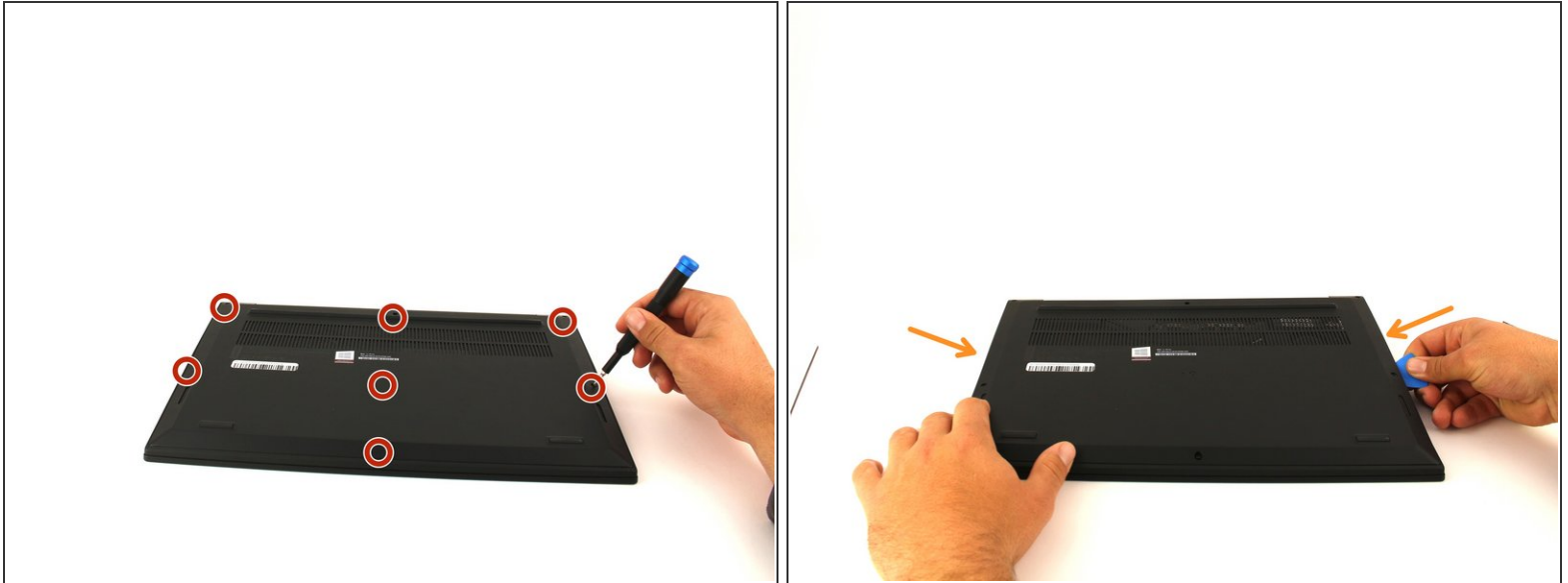
Please keep in mind that a [swollen lithium ion battery](#) is dangerous and read the page attached to the link before repair. Be sure to disconnect the computer from any power and turn the computer completely off. It is also important to be careful when removing the battery; any damage can easily make the computer not functional.



TOOLS:

- [Phillips #00 Screwdriver](#) (1)
 - [iFixit Opening Picks set of 6](#) (1)
 - [Tweezers](#) (1)
-

Step 1 — Battery



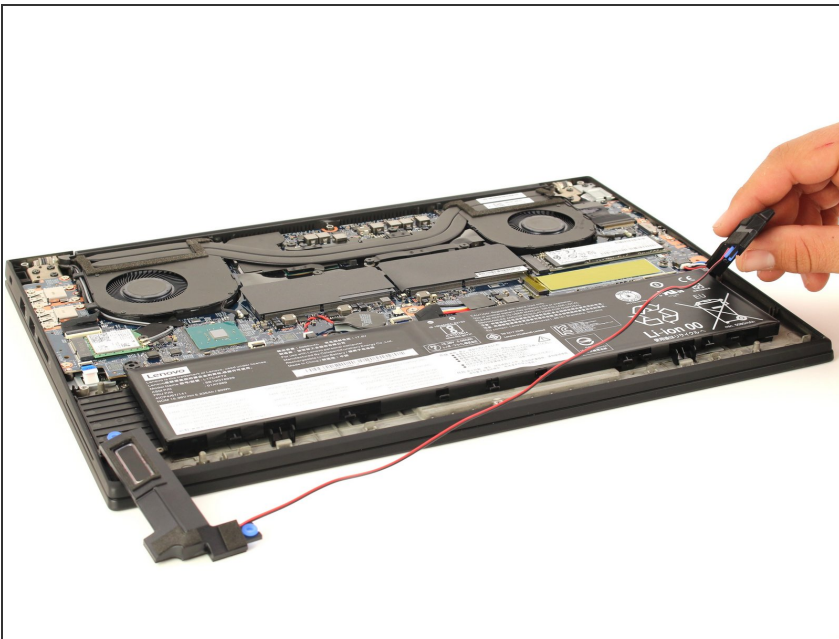
- Orient the laptop so that it is bottom up, and the track pad is closest to you.
- Unscrew the seven cover screws with a Phillips #00 head screwdriver. These screws will loosen, but will stay attached to the cover.
- Slide the blue opening pick along the side of the laptop and pry off the one clip on each side.
- The cover should easily come off.

Step 2



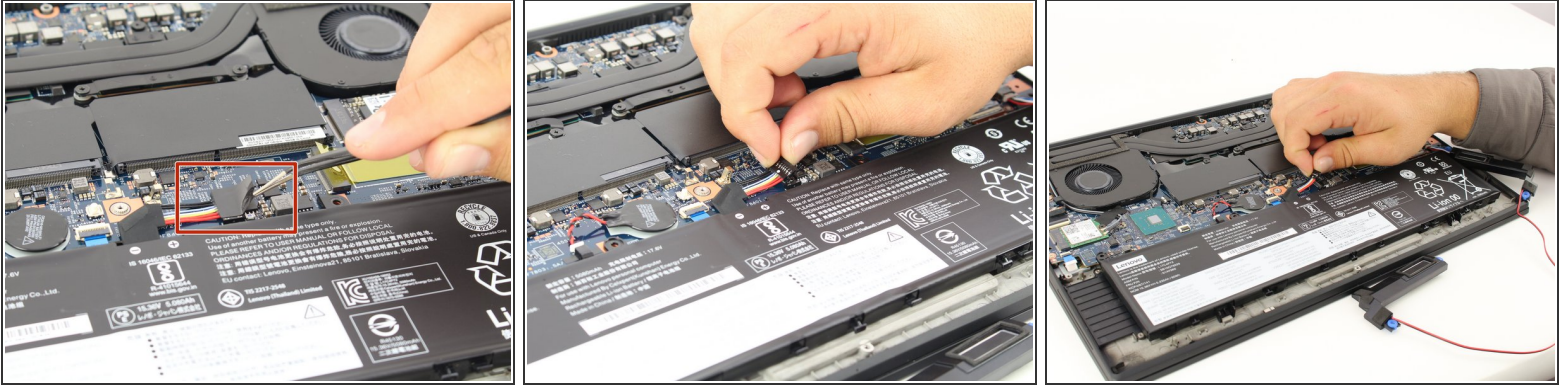
- Use a Phillips #00 head screwdriver to remove the four, 4mm screws above the battery.

Step 3



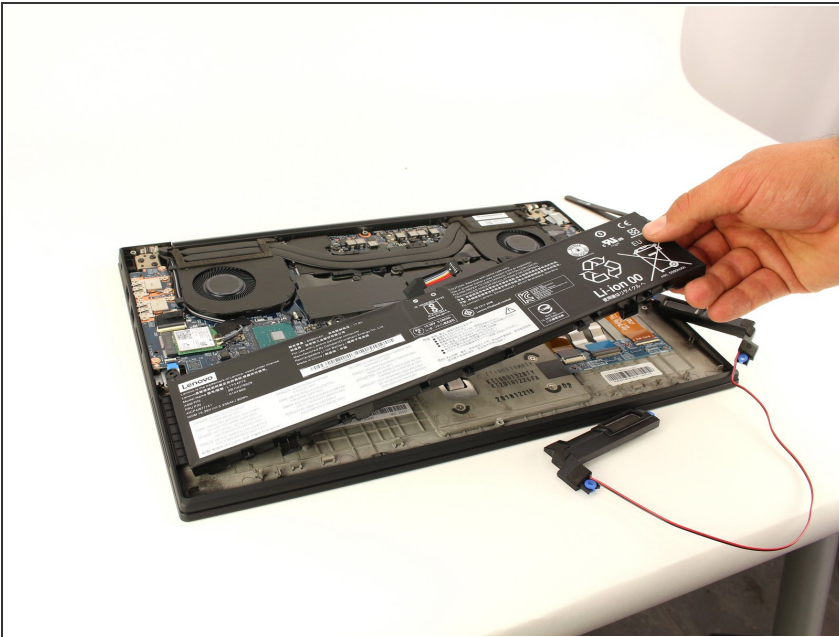
- Lift the connector to the left of the battery out of its pegs, and unwind the cable from the front of the battery.
- Set the connector out of the way of the battery.

Step 4



- Using tweezers, peel the plastic cover off the connector.
- Lift the clip on top of the connector, push towards the right of the computer and lift up carefully.
- After the connector is removed, check to see that it is labeled "Bat 1" on the motherboard, underneath the connector.

Step 5



- Lift the battery out of the frame and remove it from the device.

To reassemble your device, follow these instructions in reverse order.