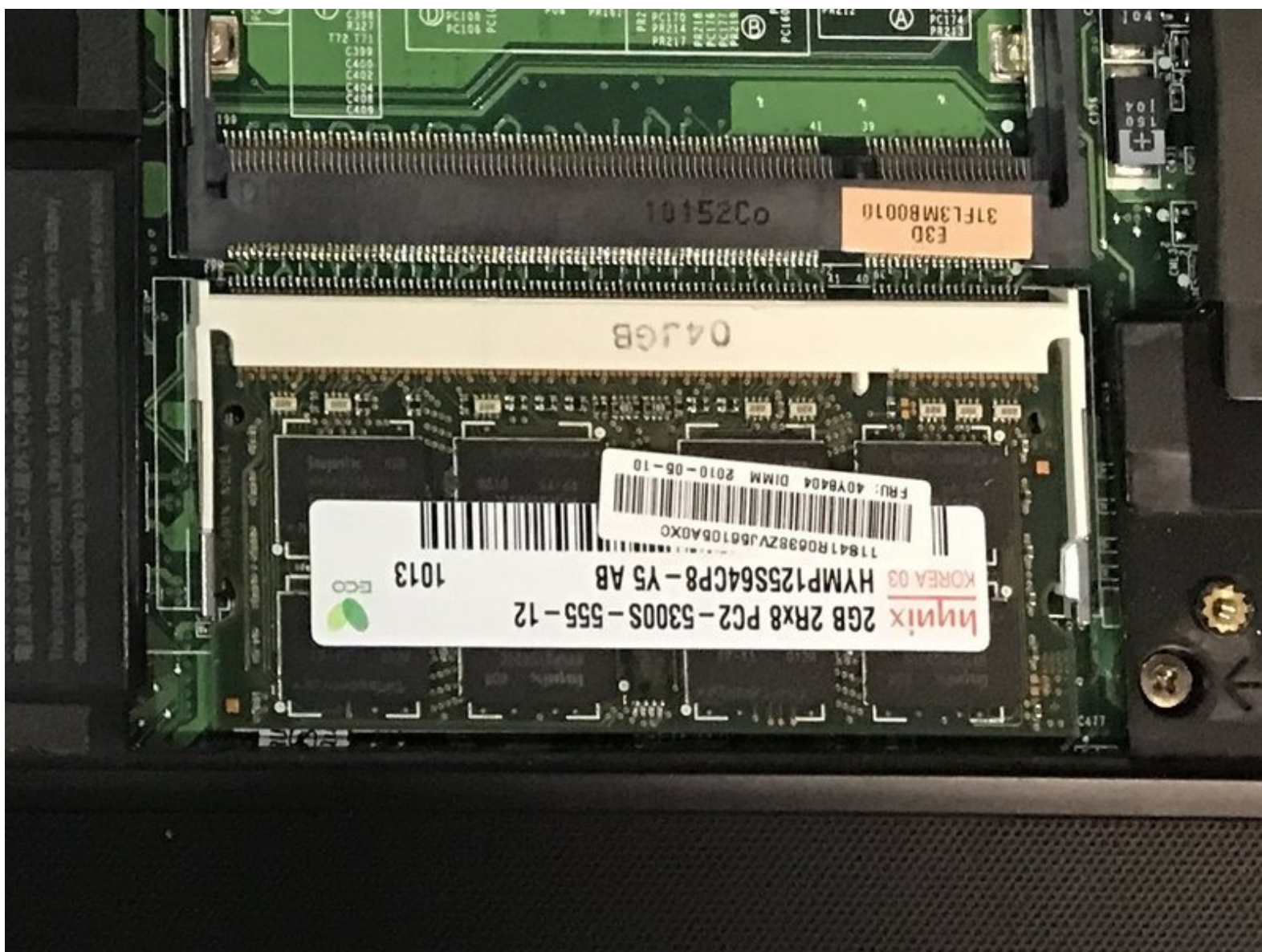




Written By: Caroline Clark



INTRODUCTION

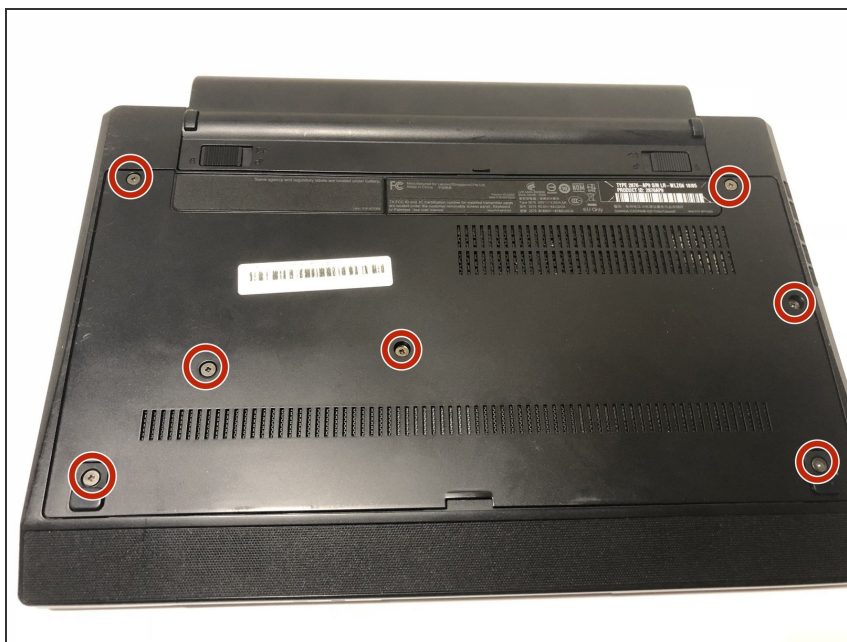
The amount of storage in the device's RAM may be filling up. In order to restore the devices near original speed, you may need to replace or upgrade the RAM storage.



TOOLS:

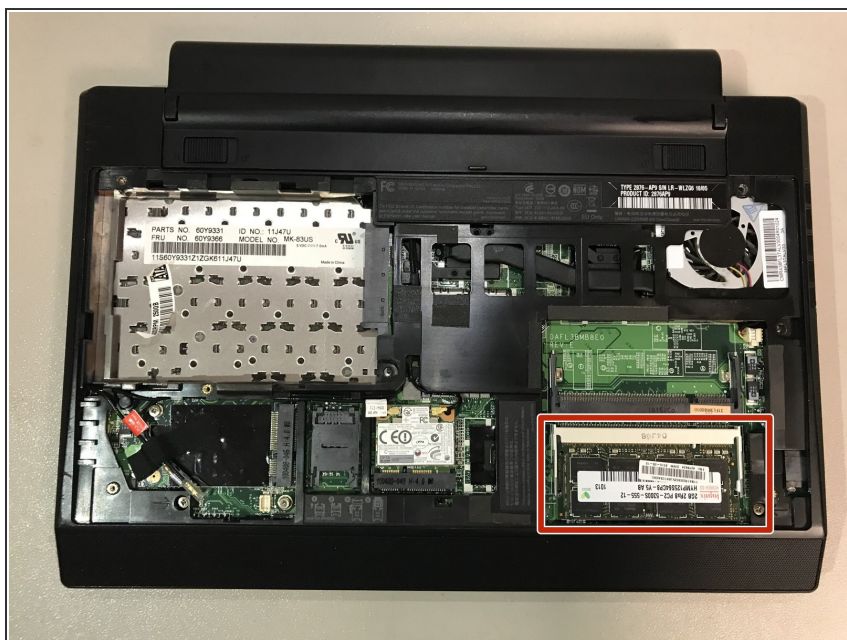
- [Phillips #0 Screwdriver](#) (1)
-

Step 1 — RAM



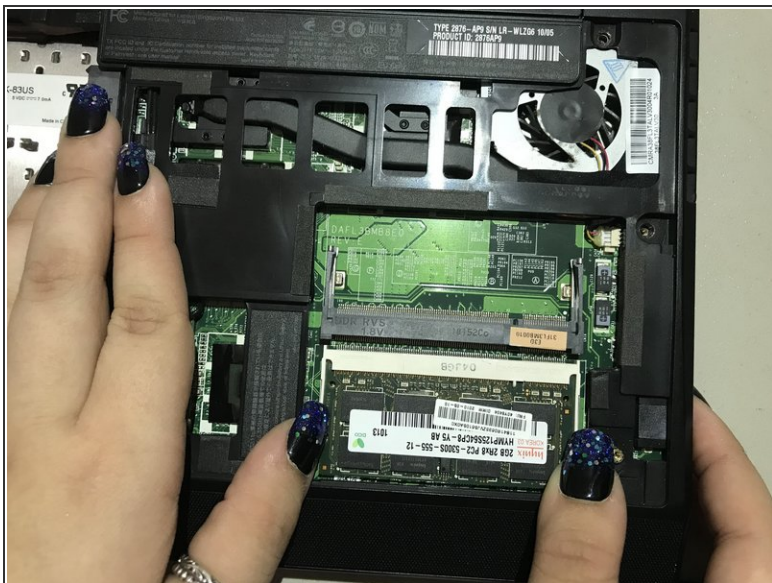
- ⚠ Power off the device completely.
- Remove the seven Phillips screws holding the bottom cover in place and remove it from the chassis.

Step 2



- The RAM will be located at the bottom right corner of the laptop.

Step 3



- Pull the two mounting clips on either side of the RAM stick away from each other.
- The RAM should lift up 30 degrees. Slide it out with respect to the angle it rests at.

Replace the RAM by sliding the new stick back into the empty slot until it clicks into place.