



# Lenovo Thinkpad Edge E545 Hard Drive Replacement

This guide will give you a step by step tutorial for replacing the hard drive

Written By: Brian butler






## TOOLS:

- [Phillips #0 Screwdriver](#) (1)
- [Metal Spudger](#) (1)
- [Phillips #000 Screwdriver](#) (1)

## Step 1 — Battery



- First, flip the laptop over as shown in the photo.

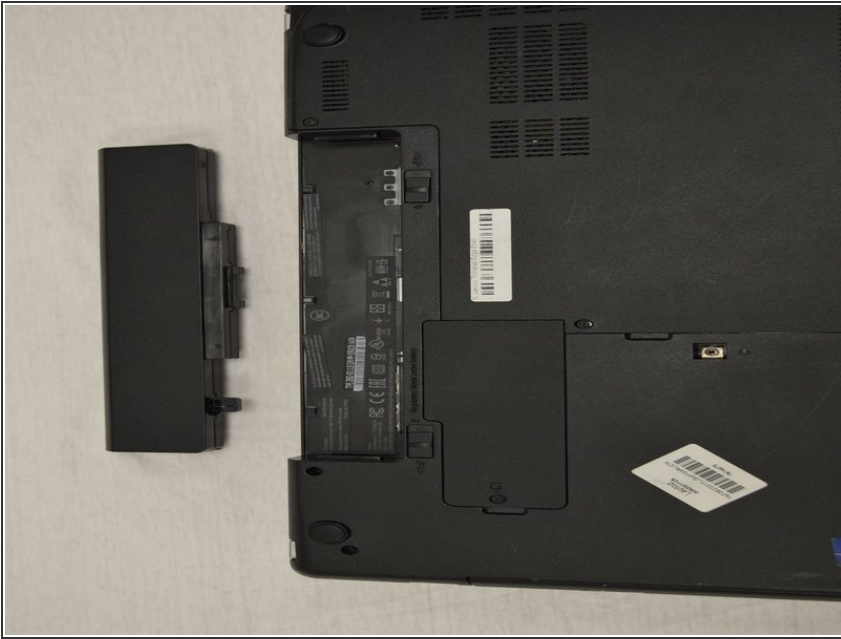
 Make sure device is fully powered down before removing battery.

## Step 2



- Below the battery are two small tabs. These function as a lock for the battery.
- Push the tabs towards each other to release the battery.

### Step 3



- Remove the battery from the device.

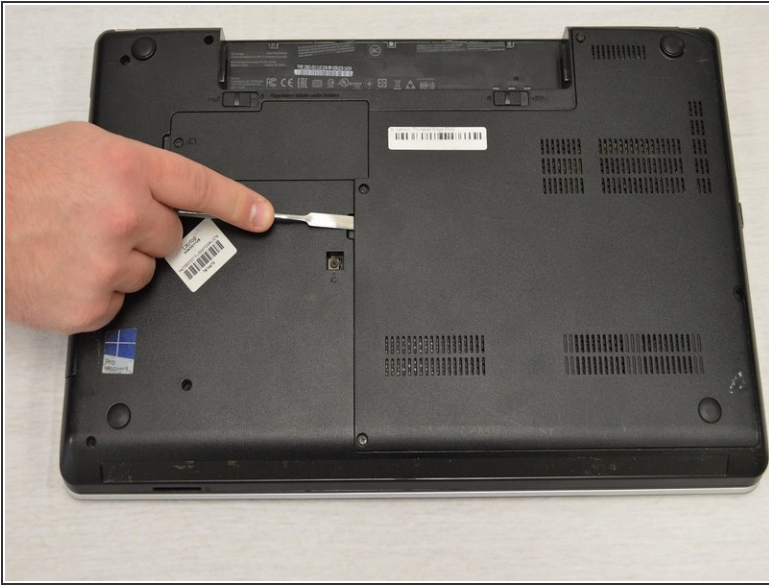
### Step 4 — Back Panel



- Using a Phillips screwdriver, remove the four screws around the edges of the rectangular panel.
- ⓘ It is recommend that you fully remove the screws and place them in a secure location.
- ⚠ Make sure to use the appropriate sized screwdriver. The wrong size can cause damage to the screws or screwdriver.



## Step 5



- Once all the screws are removed, gently slide the metal scalpel around the edge of the panel to pry it open.
- Slowly lift the left edge side of the panel with your fingers. Once the left side is up, continue lifting the right edge of the panel.

## Step 6



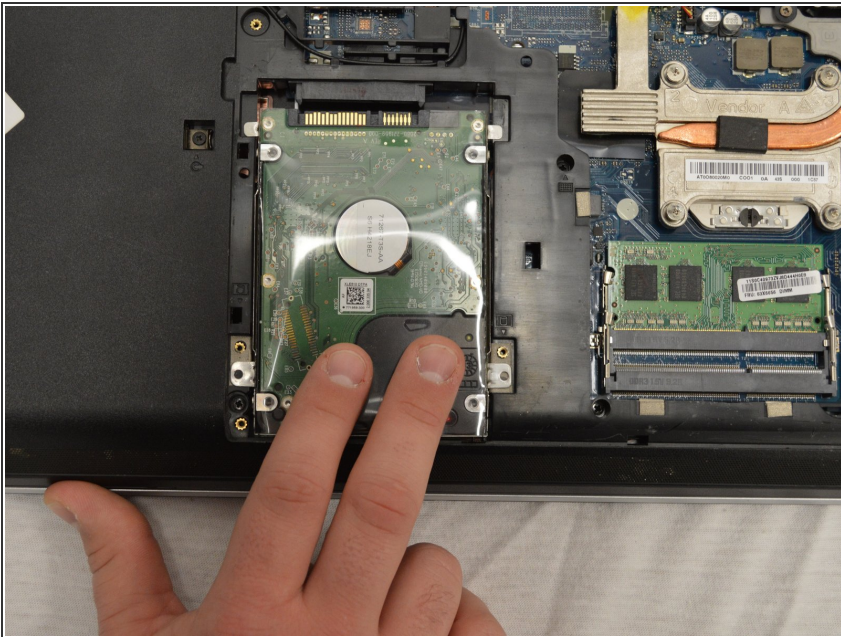
- Remove the back panel.
  - The back of the laptop will be exposed once the panel is removed.
- i** Many of these small components are easily damaged--do not touch anything unless instructed to.

## Step 7 — Hard Drive



- After back panel is removed, you can remove the two screws at the bottom of the hard drive using the Phillips #000 screwdriver.

## Step 8



- After screws are removed, slide the hard drive down to disconnect from motherboard and remove it.



## Step 9



- Now you have successfully removed the Hard drive.

To reassemble your device, follow these instructions in reverse order.