



Lenovo Thinkpad Edge E545 Optical Drive Replacement

This guide will walk you through the steps needed to replace the optical drive on your Lenovo Thinkpad Edge E545.

Written By: John Metzger





TOOLS:

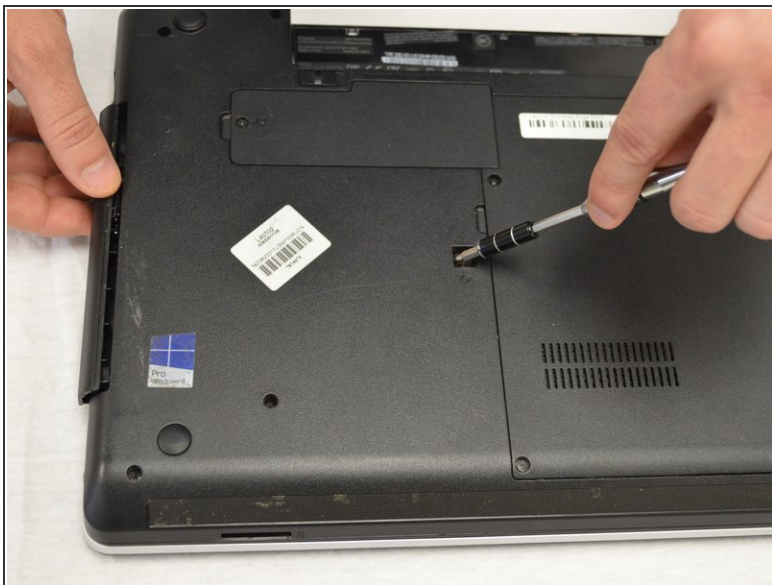
- [Phillips #000 Screwdriver](#) (1)
-

Step 1 — Optical Drive



- Using the Phillips #000 screwdriver, remove the screw that holds the optical drive in place. It is found in a square indent close to the center of the back panel of the computer.

Step 2



- Use the end of the screwdriver to assist in starting to slide the optical drive out.
- Put it into the hole where the screw was removed.
- Push towards the direction the optical drive slides out.
- Once it can be grabbed by hand, slide it out the rest of the way.

To reassemble your device, follow these instructions in reverse order.