



Lenovo Thinkpad T410i DVD Drive Replacement

Lenovo T410i Optical/DVD Drive replacement

Written By: Gabriel Cordova



INTRODUCTION

This guide will show you how to replace your Optical/ DVD Drive if yours has become jammed or broken.

Guide Notes

- This installation is hardware only, and does not require any firmware installments.
- DVD drive may carry charge if laptop was recently active, use ESD bracelet to discharge any currents.
- Optical Lasers emit radiation, be careful NOT to break/open the drive casing.



PARTS:

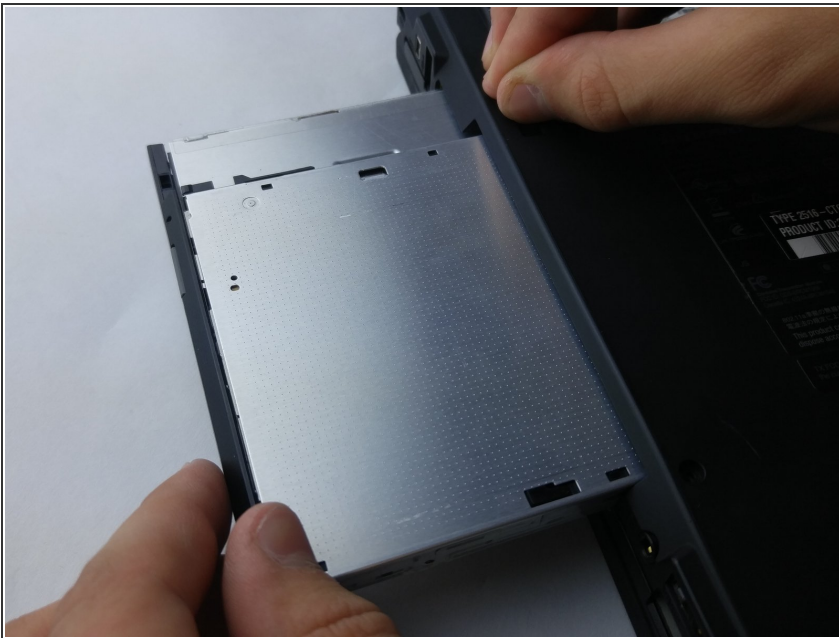
- [T410i DVD Drive](#) (1)
-

Step 1 — DVD Drive



- Slide and hold the two locking latches to the unlocked position.

Step 2



- While holding the latches, slide the DVD drive away from the compartment and remove it from the device.

To reassemble your device, follow these instructions in reverse order.