



Lenovo Thinkpad T410i LCD Screen Replacement

How to replace and reinstall the LCD screen for your Lenovo Thinkpad T410i.

Written By: Harsh Patel



INTRODUCTION

If the LCD screen of your Lenovo ThinkPad T410i is broken or you wish to install a new screen, this guide will show you how to replace and reinstall the screen.

Guide notes

- This guide is hardware only, and it would not help resolve issues such as screen staying black or screen not responding to input.
- Unplug the system from the power source (if it is plugged in), and remove the battery before you perform any of the steps.
- Once you install the new LCD screen, safely dispose the old one.



TOOLS:

- [Phillips #0 Screwdriver](#) (1)
- [Spudger](#) (1)



PARTS:

- [Lenovo Thinkpad T410i Screen Bezel](#) (1)
- [Lenovo Thinkpad T410i LCD screen](#) (1)

Step 1 — Screen Bezel



- Use a spudger to remove the plastic covers from the LCD screen.

Step 2



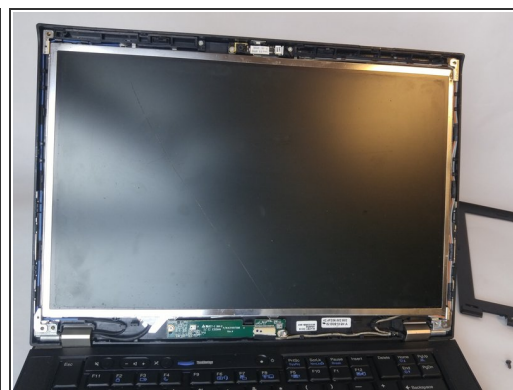
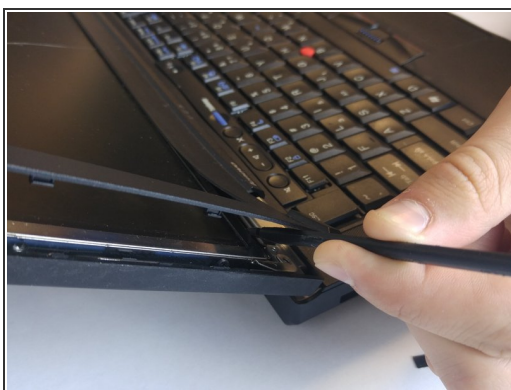
- Remove the two 6.0mm screws on each side using Philips #0 head screwdriver as shown in the picture.

Step 3



- Use a spudger to separate the bezel of the LCD screen.

Step 4



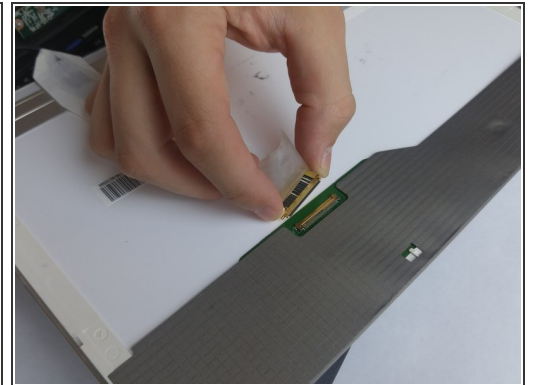
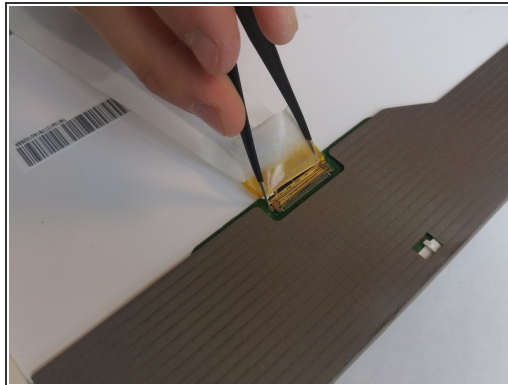
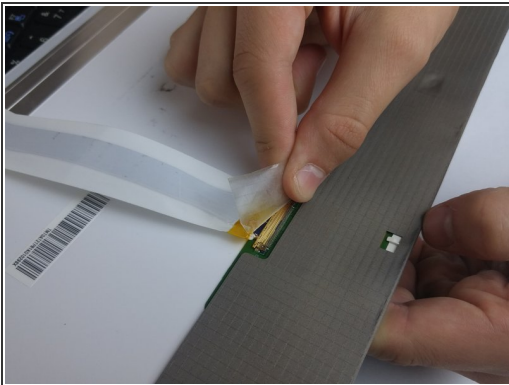
- Continue along the edges lifting up and prying off the plastic LCD bezel.

Step 5 — LCD screen



- Use a Philips #0 head screwdriver to remove the two 6.0mm screws from the top corners of the LCD screen.

Step 6



- Place the LCD screen safely down on its front.
 - ⚠ Pulling the screen too far away from the screen may damage delicate ribbon cable.
- Peel the tape off the ribbon cable's contacts.
- Carefully detach the ribbon cable from the LCD screen.
 - ⚠ Poking the golden contacts may easily damage them.

Step 7



- Remove the screen from your device.

To reassemble your device, follow these instructions in reverse order.