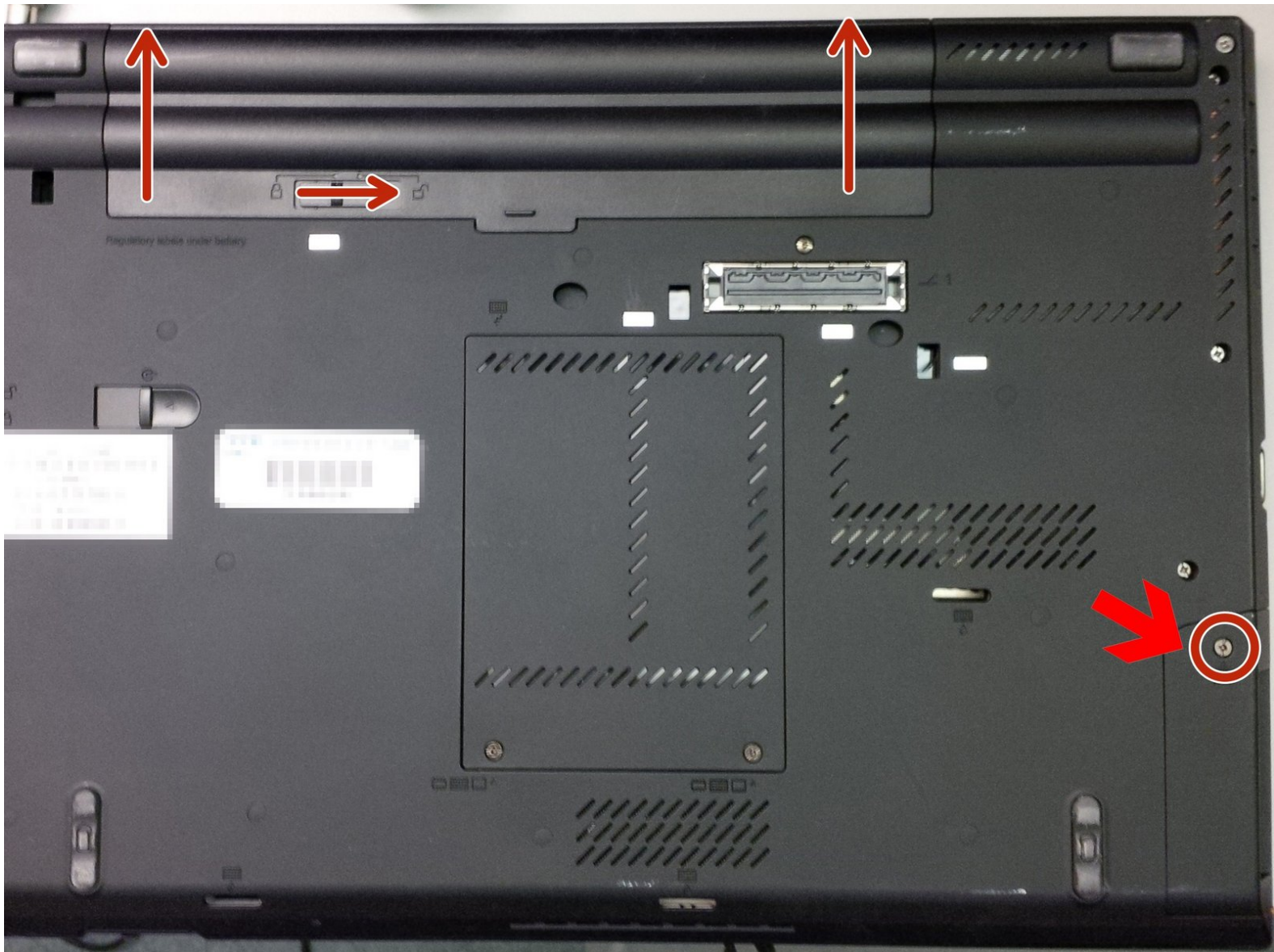




Lenovo Thinkpad T430 Hard drive or solid state drive replacement

This guide describes how to remove and replace a hard drive or solid state drive in a Lenovo Thinkpad T430 laptop.

Written By: Michael Khmelnitsky



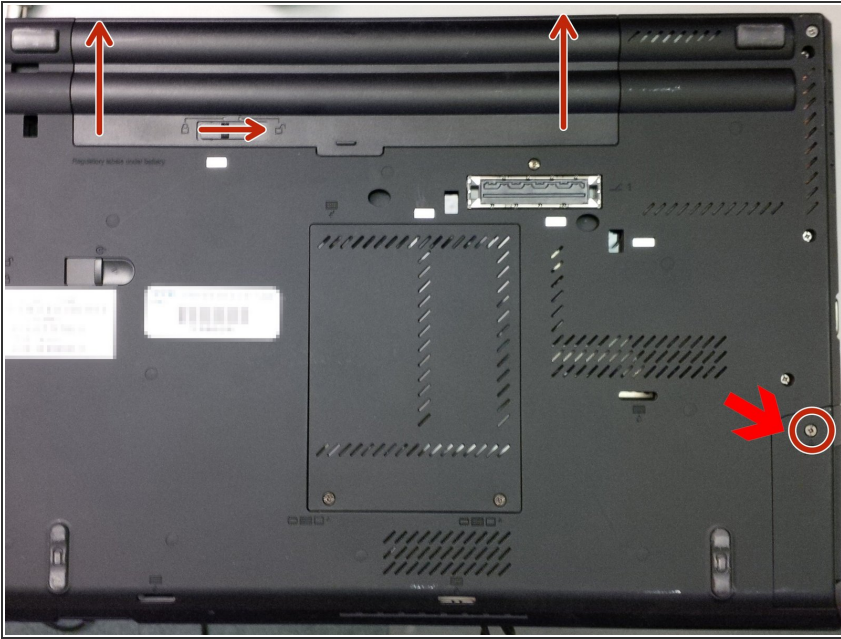
**TOOLS:**

- [Phillips #1 Screwdriver](#) (1)
- [Spudger](#) (1)

**PARTS:**

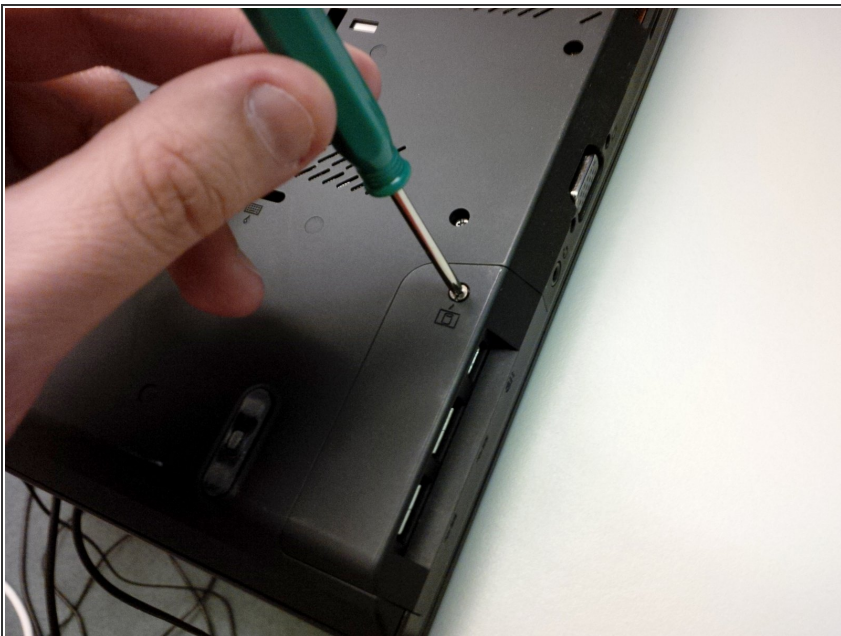
- [1 TB SSD / Upgrade Bundle](#) (1)
- [250 GB SSD / Upgrade Bundle](#) (1)
- [500 GB SSD / Upgrade Bundle](#) (1)
- [2 TB SSD / Upgrade Bundle](#) (1)

Step 1 — Removing the battery and locating the drive enclosure



- Flip the laptop over.
- Place it on a flat, sturdy surface.
- Remove the battery by moving the battery latch and slowly sliding the battery out.
- Locate the drive enclosure.

Step 2 — Removing the screw in the drive enclosure




- Use a small Phillips screwdriver to unscrew the single screw that holds down the drive enclosure cover.
- ⓘ The screw is designed to remain within the plastic cover. (This is called a captive screw.) Don't worry about extracting it completely.

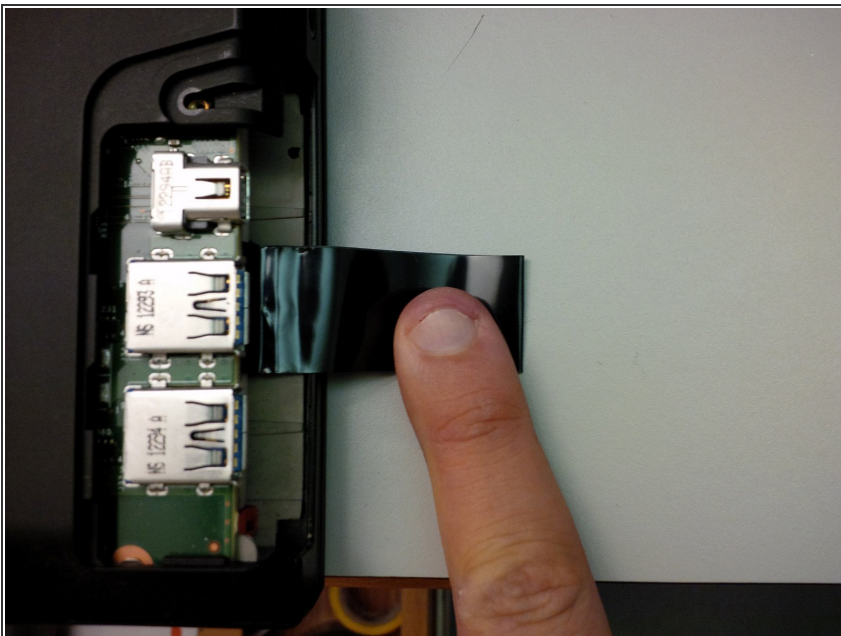
Step 3 — Removing the drive enclosure



- Carefully remove the drive enclosure cover.

 Be careful not break the small latches on the sides of the cover.

Step 4 — Pull out the pull tab



- Insert a spudger (or a similar tool) under the loop of the black pull tab, and gently pull it out from above the hard drive.

Step 5



- Continue pulling on the pull tab until the hard drive and the two plastic rails come out of the enclosure.
- ❗ Pull on the tab firmly but slowly. The hard drive should come out of the enclosure effortlessly.

Step 6 — Removing the rails from the drive



- Remove the plastic rails from the old drive and place them on the new drive.

To reassemble your device, follow these instructions in reverse order.