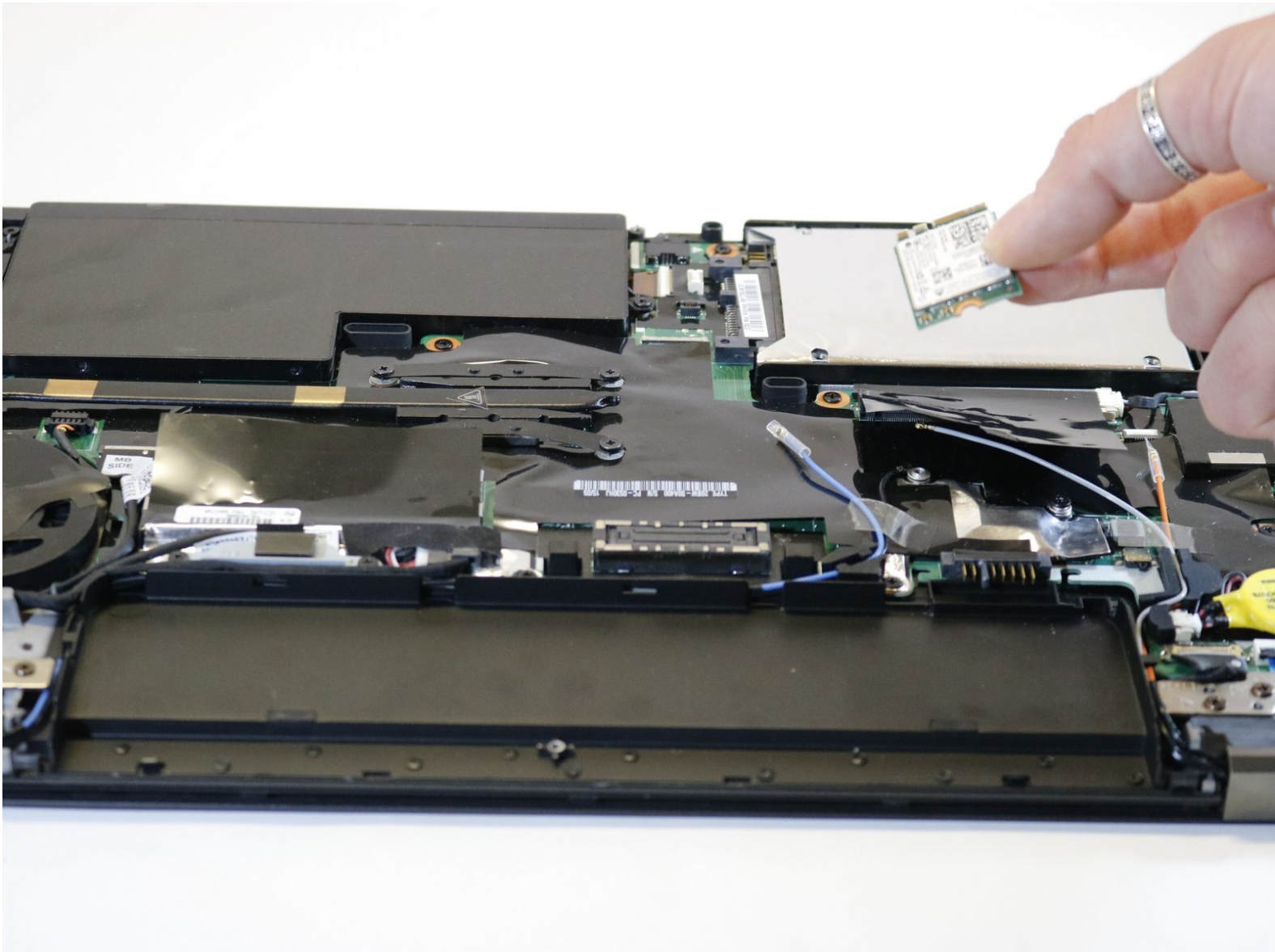




# Lenovo Thinkpad T450s Network Adapter Card Replacement

How to replace the network adapter card in a Lenovo Thinkpad T450s.

Written By: Hayden Hausman



## INTRODUCTION

If your device is failing to successfully connect to any wireless network you can find step by step instructions in this guide on how to replace your Network adapter.



### TOOLS:

- [Phillips #0 Screwdriver](#) (1)
  - [Metal Spudger](#) (1)
-

## Step 1 — Battery



- Turn off device before starting
- ❗ Flip the laptop upside down so you have access to the battery.

## Step 2



- Slide lock button 1 to the unlock position and gently slide away from your body.

### Step 3



- Slide lock button 2 to the unlock position and continue gently sliding until the battery is removed.

### Step 4 — Lenovo Thinkpad T450s Bottom Panel Removal



- Flip the device over and lay it down with the underside facing upwards.
- Unscrew all 7 screws. Note that they do not come out completely.

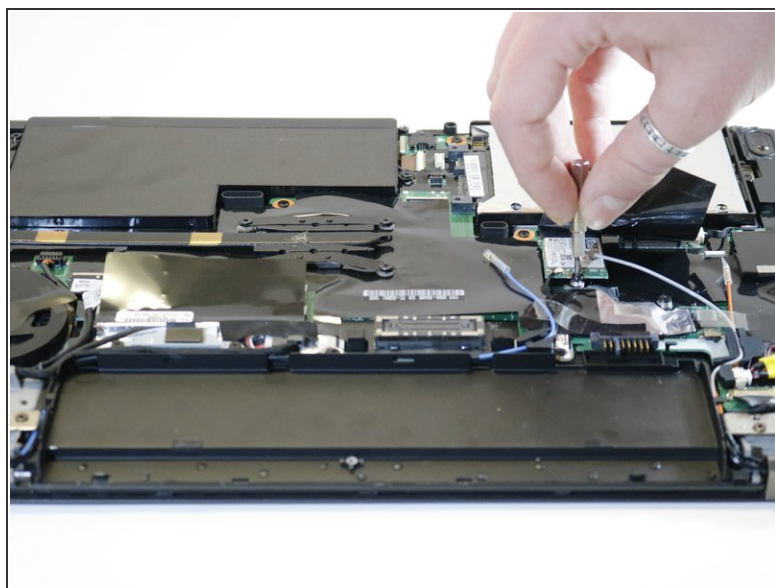
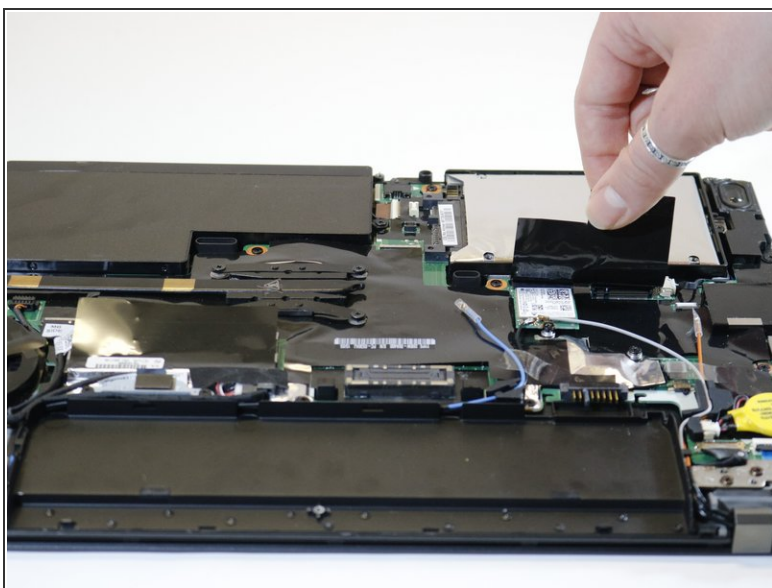


## Step 5



- Pry the bottom from the computer until it pops out.

## Step 6 — Network Adapter Card



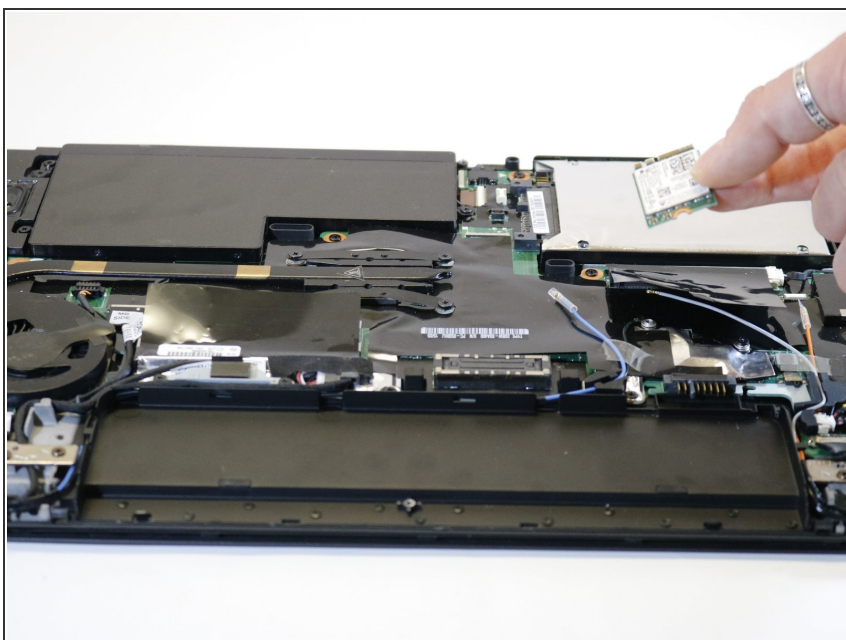
- Remove the single 3mm screw holding the network adapter in place.
- ⓘ You will have to locate and lift up a small, black area of film covering the screw and network adapter.

## Step 7



- Remove the two cables connected (1 black, 1 grey) from the network adapter.
- ❗ The cables will pop off once the screw is removed.

## Step 8



- Pull the network adapter out of the device.

To reassemble your device, follow these instructions in reverse order.