



Lenovo X130e LCD Replacement

This guide will help you replace a broken LCD in a Lenovo X130e.

Written By: Bill



INTRODUCTION

This guide will help you tear down and replace a broken LCD on a Lenovo X130e laptop. Step by step you will breakdown the machine until you have successfully replace the broken LCD.



TOOLS:

- [Phillips #1 Screwdriver](#) (1)
- [Phillips #0 Screwdriver](#) (1)
- [iFixit Opening Picks set of 6](#) (1)
- [Plastic Cards](#) (1)

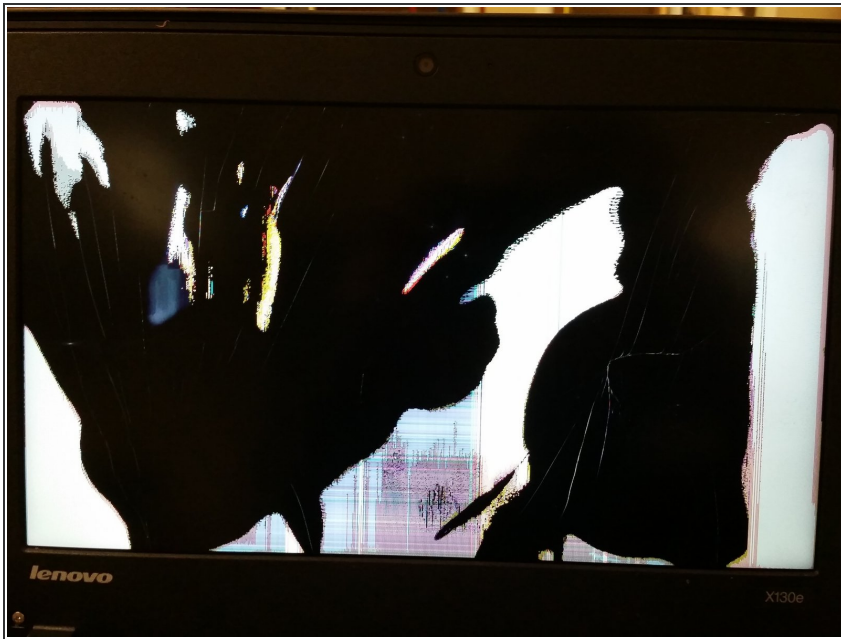
Optional



PARTS:

- [Lenovo X130e Replacement LCD](#) (1)


Step 1 — Inspect the LCD for damage



- Before ordering a new LCD, determine if the old one is cracked or damaged. If it is damaged, power off the machine and remove the battery.

Step 2 — Remove the LCD bezel



 While the display is cracked, handle it with caution. The screen may crack further.

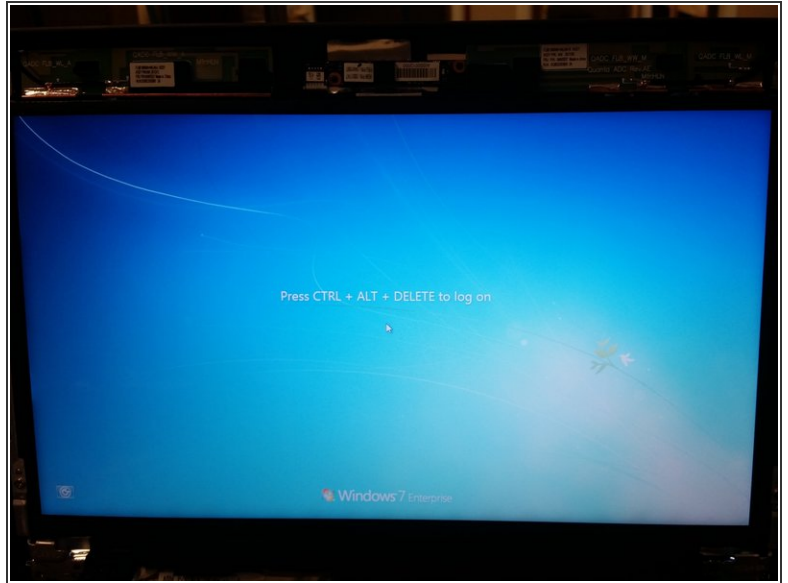
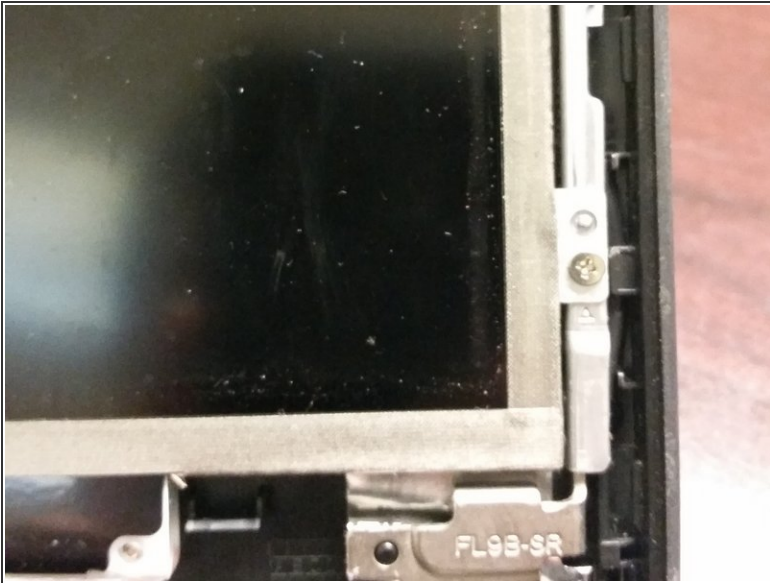
- Unscrew two screws on the LCD bezel. There is one screw per side. Use a **Phillips #1** screwdriver to do this.
- Once the screws are out, use a pry tool to remove the LCD bezel. Work your way around the LCD bezel to remove it.

Step 3 — Remove the LCD



- Remove the 4 screws holding the LCD in. There are two per side. Use a **Phillips #0** screwdriver to do this.
- Once the screws are out, pry the broken LCD to expose the LVDS cable. Once you have LVDS cable access, loosen the tape holding it in.
- Set the broken LCD aside for recycling.

Step 4 — Install the new LCD



- Get the new LCD. Inspect it for damage before installation.
- Reconnect the LVDS cable to the new LCD. Push the tape down after it is plugged in. **Note:** The tape on the cable will be worn. Replace the tape if you are concerned the cable will fall out.
- Screw the LCD into the LCD housing. Use the 4 screws previously removed before.
- Power on the laptop to test the new LCD. If it works, snap the bezel back onto the laptop. Finish reassembling the laptop.

Step 5 — Finishing up!



- When the new LCD is tested and is confirmed good, put the bezel back on.
- Line the bezel up with the LCD housing. Once you align it, snap it back onto the system. After snapping it back on, screw the bezel in with the 2 screws that were previously removed.
- Replace the laptop's battery.

Hope this guide will help repair or troubleshoot any problems with monitor on a lenovo based machine.