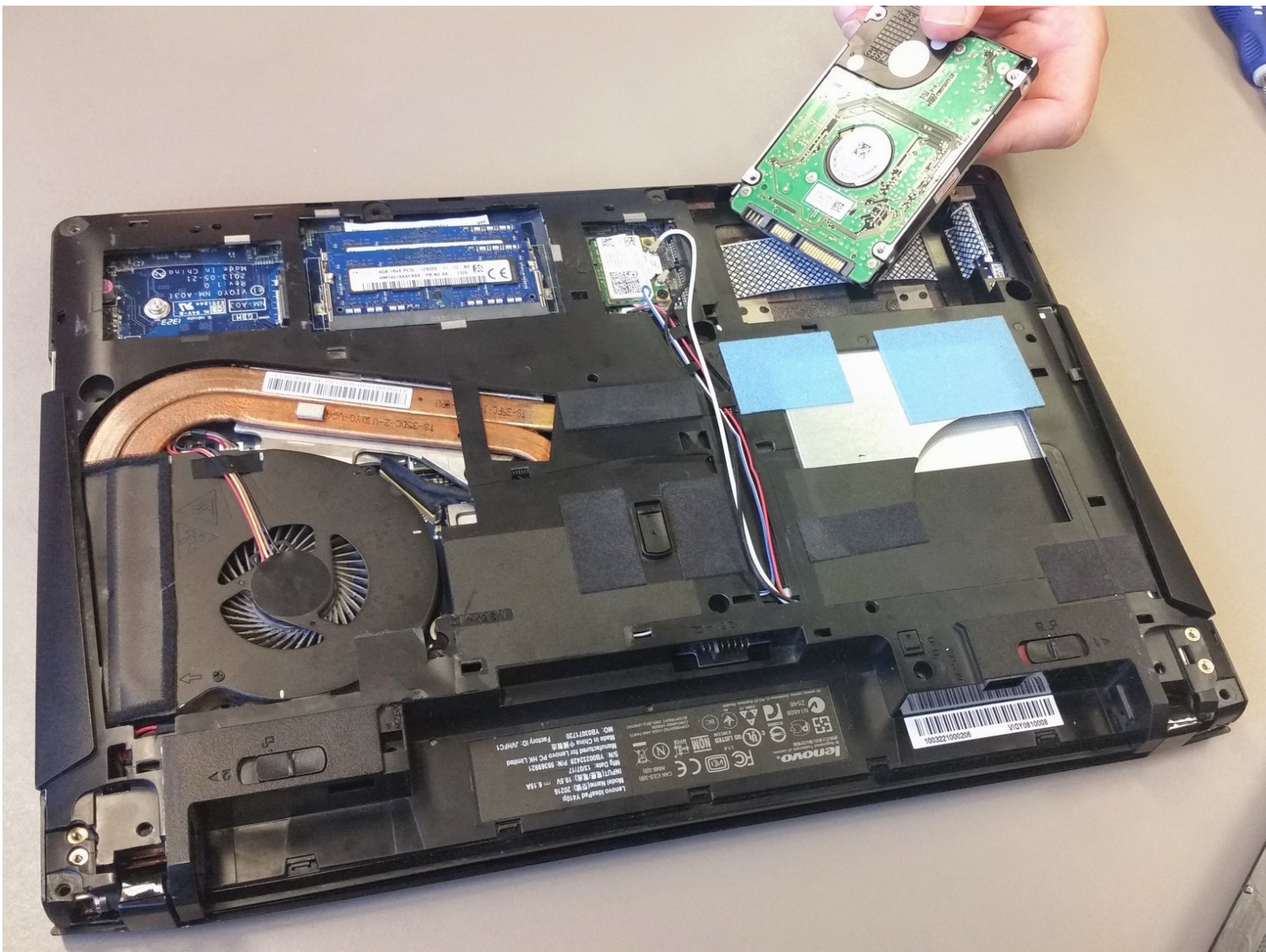




# Lenovo Y410P Hard Drive/SSD Replacement

This guide will give an overview on how to remove and replace the hard drive in the Lenovo Y410P.

Written By: Brandon



---

## INTRODUCTION

Because the Lenovo Y410P uses a standard laptop hard drive, it is simple to replace. Hard Drives are often easily accessed, and this drive is no different. The hard drive can be replaced in just 2 simple steps.

---

### TOOLS:

- [Phillips #0 Screwdriver](#) (1)
-

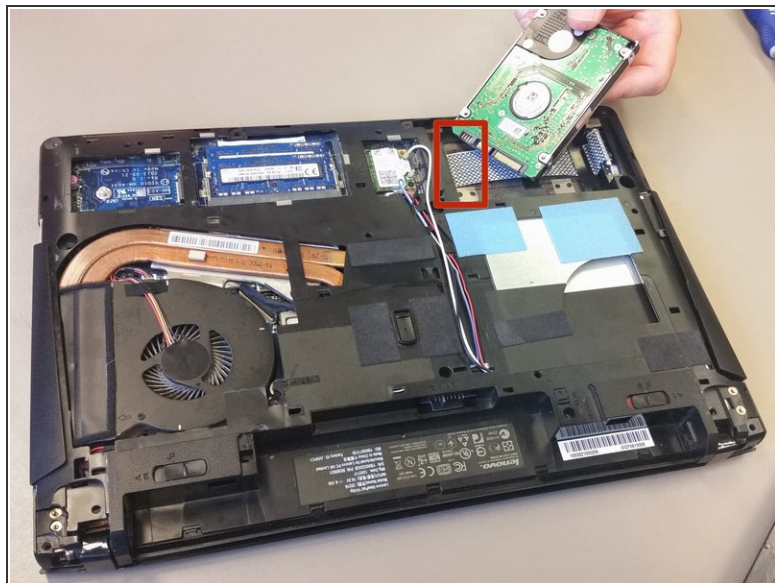
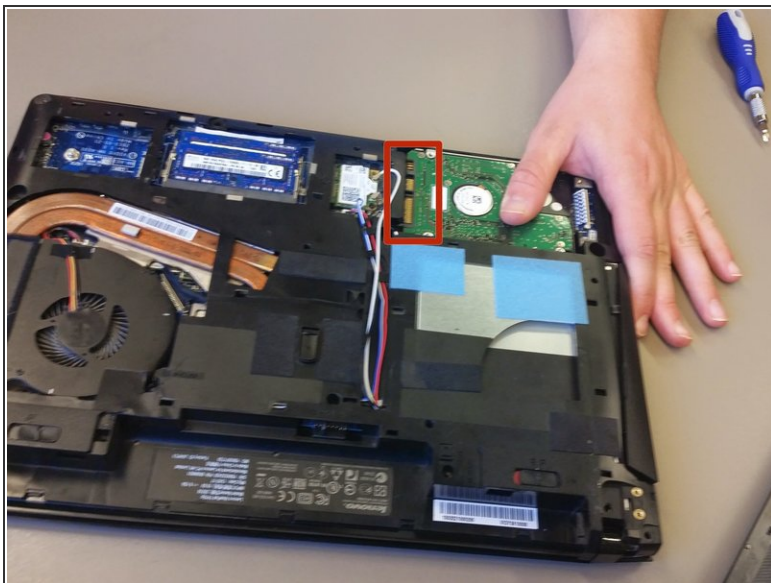
## Step 1 — Removal of Bottom Panel




- Remove the eight M2.5x8mm Phillips head screws that fasten the bottom cover.
  - For the Lenovo Y510P, there's another screw in the center that has to be removed.
- Lift bottom cover off and set aside.
  - On the Lenovo Y510P, use a black spudger around the outside edge to pop loose the bottom panel.



## Step 2 — Removal of Hard Drive



 If you intend to reuse this Hard Drive/SSD, be careful with the removal. Hard impact may result in damage.

- First remove the two screws at the end of the Hard Drive bracket then slide the Hard Drive/SSD out of its seat.

To reassemble your device, follow these instructions in reverse order.