



Lenovo Y410P LCD Replacement

Replacement of the LCD on a Lenovo Y410P. This guide covers the bezel detachment, removal of the LCD, and detachment of connector cable.

Written By: Brandon



INTRODUCTION

This guide will help you replace a broken LCD.



TOOLS:

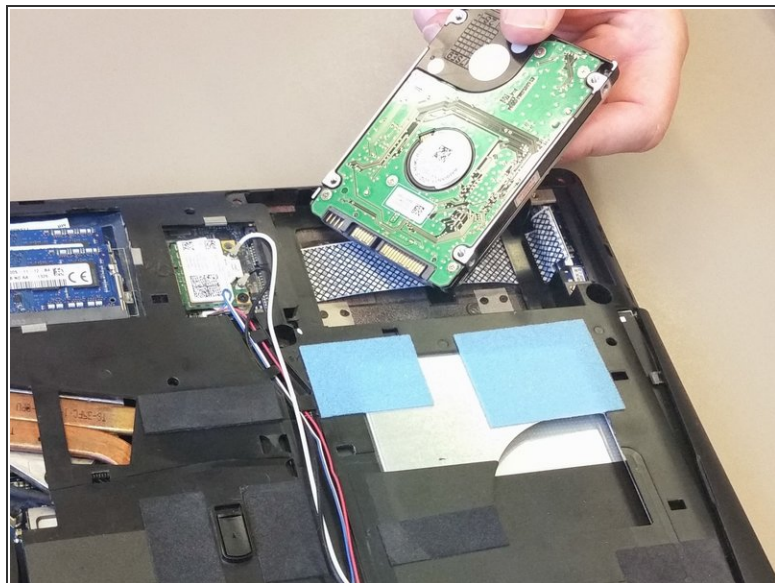
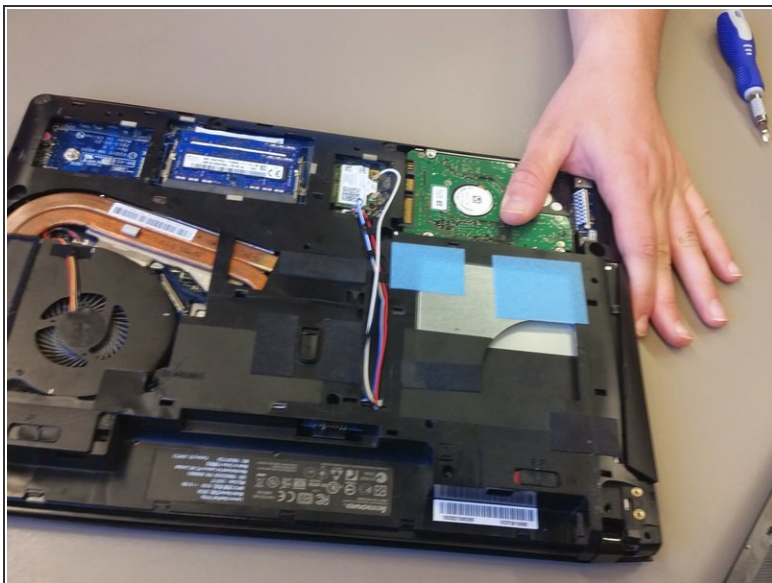
- [Phillips #0 Screwdriver](#) (1)
-

Step 1 — Removal of Bottom Panel



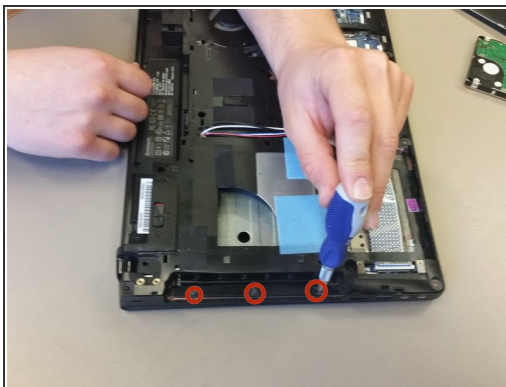
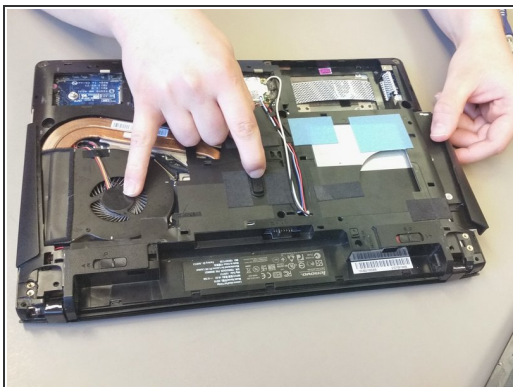
- Remove eight M2.5 x 8mm Phillips head screws, using a Phillips #0 screwdriver, at the specified locations.
- Lift the bottom cover off and set it aside.

Step 2 — Removal of Hard Drive



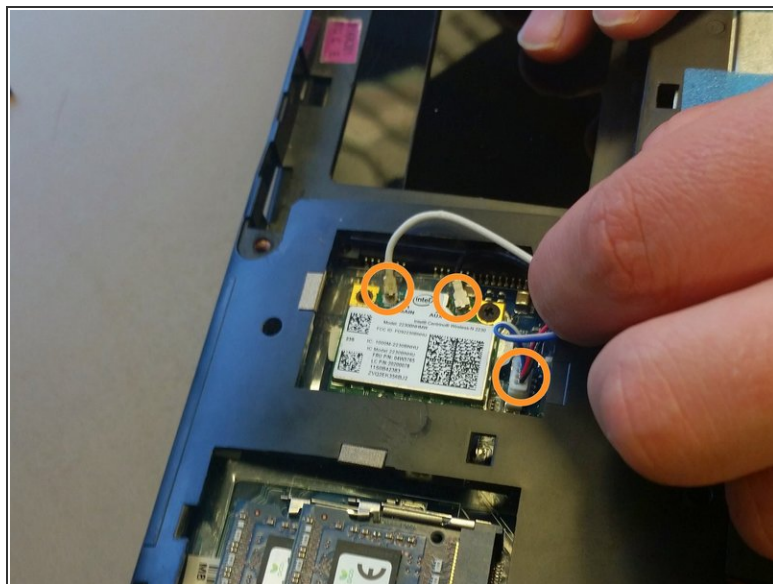
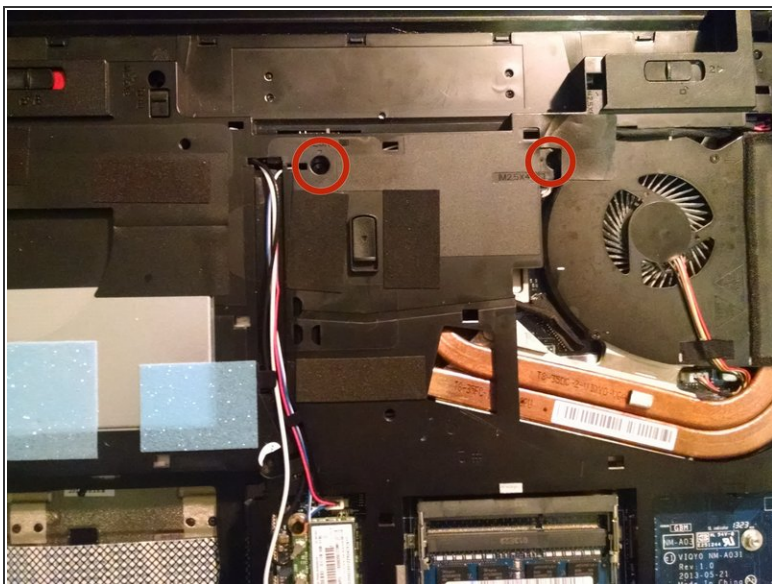
- Remove the two M2.5x4mm screws using a Phillips #0 screwdriver.
 - Slide the hard drive out of the casing.
- ⚠ Be careful when handling the hard drive; rough impacts may cause data loss.

Step 3 — Remove Optical Drive



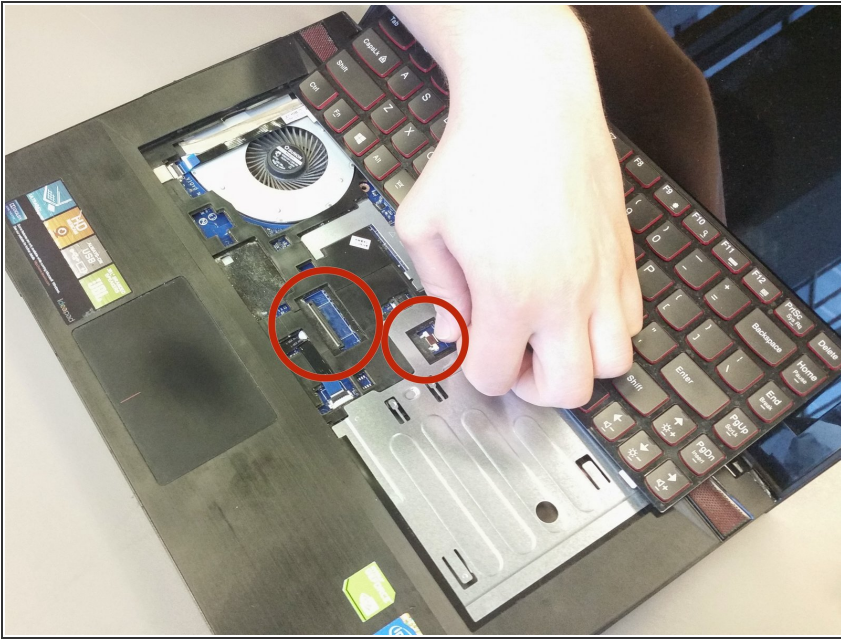
- With the laptop's bottom facing up, pull the optical drive release lever back and pull the optical drive out.
- Unscrew the three M2x3mm Phillips head screws shown.
- At the front edge of the laptop, empty the SD card holder by pressing on the card. This will allow for further disassembly in later steps.

Step 4 — Remove Keyboard and Cables



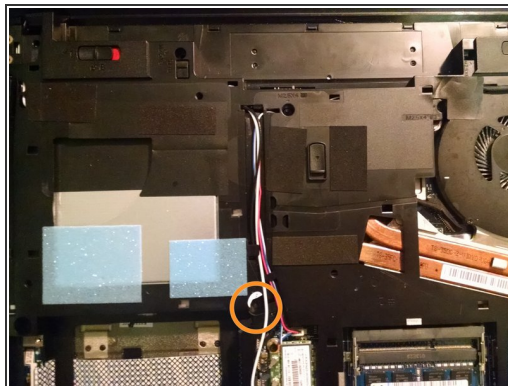
- Remove the two M2.5 x 6mm screws using a Phillips #00 screwdriver.
- Remove the WiFi cables and the sound connector. (3 wires)

Step 5



- Open the laptop hinge, tip the laptop onto its side, and use the back end of the screwdriver to push the keyboard out from the optical drive area.
- Turn the laptop right side up and pry the keyboard up slowly until it is clear of the case.
- ⚠ Be careful of the ribbon cable when removing the keyboard. The ribbon is still attached.
- Detach the ribbon cables by opening the specified latches.

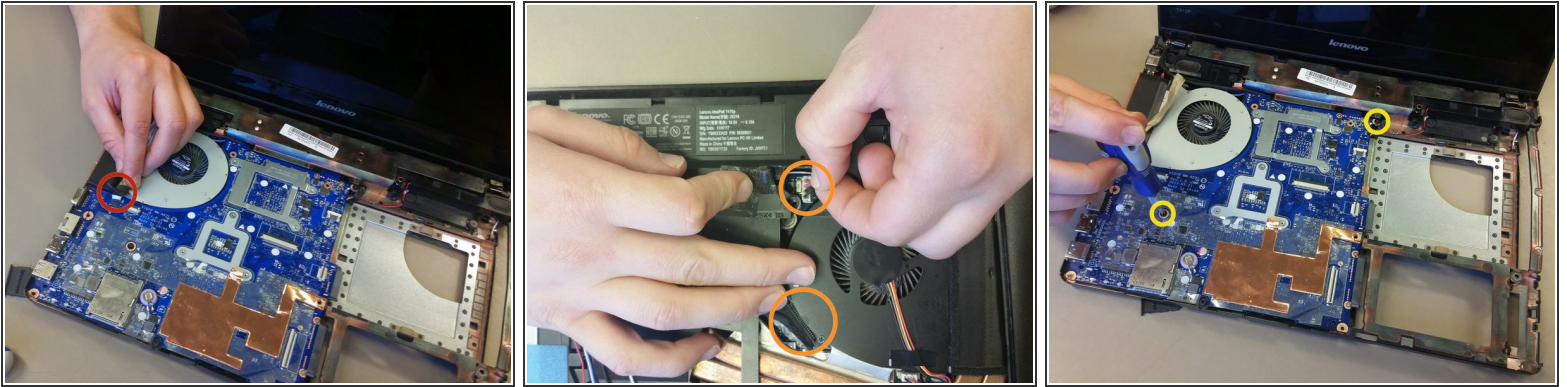
Step 6 — Removal of Palm Rest



- Detach the ribbon cables by opening the specified latches.
- Turn the laptop upside down and remove the M2.5x8mm screw with Phillips #0 screwdriver.
- Turn the laptop on its side and pry the bottom from the top.
- ⚠ Only partially remove the palm rest; there is still a ribbon cable attached underneath it.
- Remove the ribbon cable by opening its respective latch.

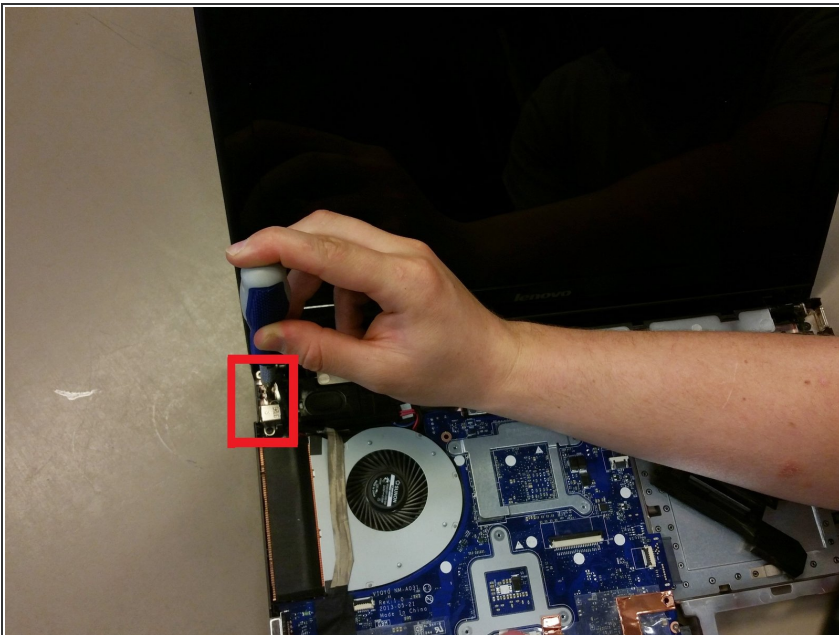
This document was generated on 2019-09-24 03:16:36 PM (MST).

Step 7 — Removal of Motherboard



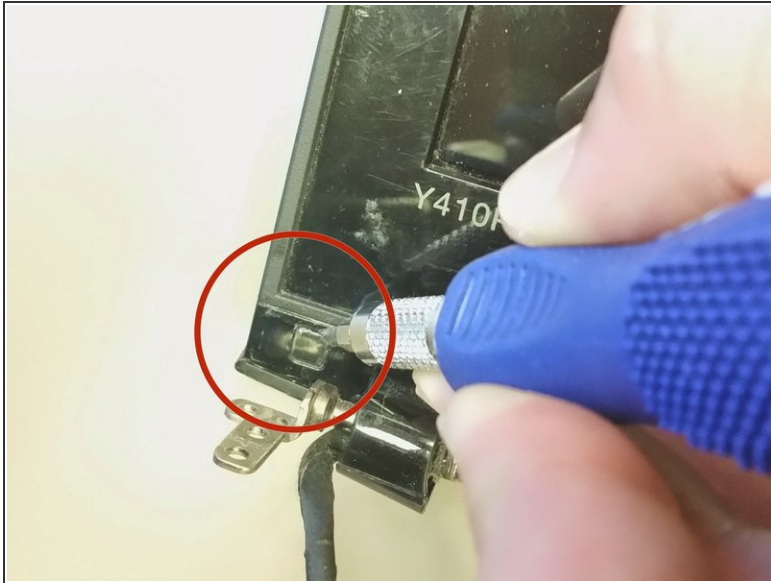
- Remove the specified cable on top of the motherboard.
- Flip the laptop over, and remove the specified cables.
- Remove the two M2.5x4mm screws with a Phillips #0 screwdriver
- Remove the motherboard with hands.

Step 8 — Detach LCD assembly from main Frame



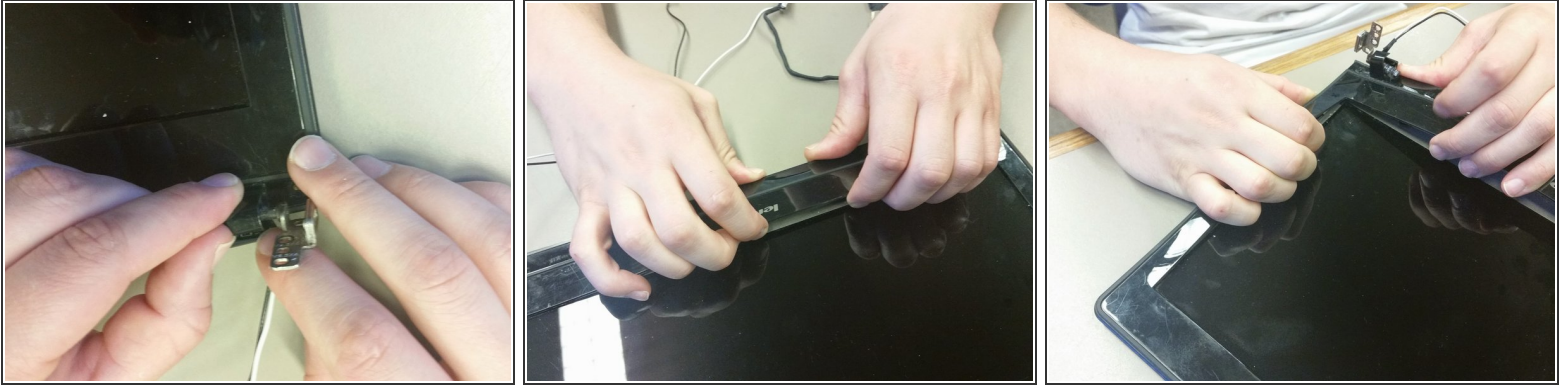
- Detach the LCD assembly by unscrewing four M2.5x4mm Phillips Screws. (Two on each side).
- Pull the LCD assembly away from main frame.

Step 9 — Unscrew Bezel (plastic frame around the LCD Screen)



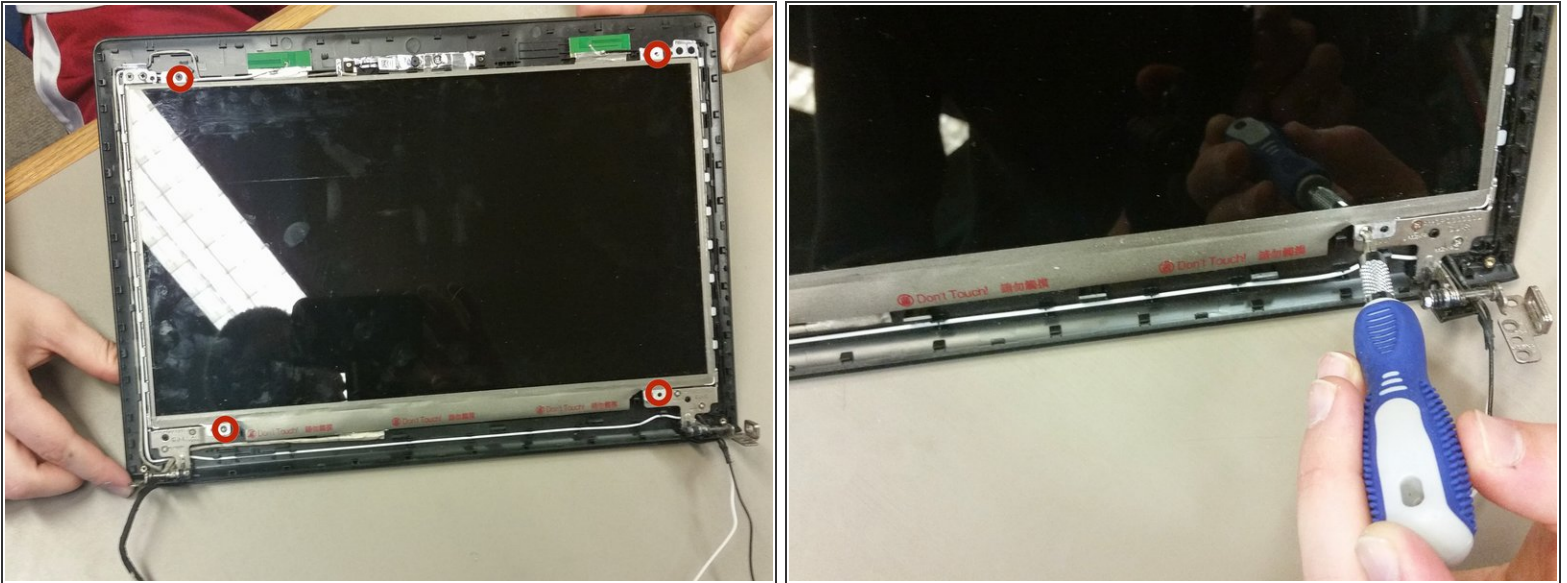
- Using a flat head screwdriver, wedge out two plastic tabs to reveal the screws.
 - One tab is in the bottom left corner and one is in the bottom right corner. Symmetrical locations.
- Using a #0 phillips screwdriver, unscrew two silver M2.5x4mm screws.
 - These are located underneath the previously removed plastic tabs.

Step 10 — Remove Bezel (plastic frame)



- Unclip the latches at each bottom corner. They are located below the screws that were previously removed.
- Place your fingers inside of the edge of the bezel. Separate the bezel by pulling it away from the back cover. Pull until one side has been lifted.
- Use the same technique to separate all remaining sides of the bezel.
- Starting at one corner and making your way around. Ensure the bezel is completely removed from the back cover.
- Completely remove bezel from LCD screen and back cover.

Step 11 — Unscrew LCD Screen (Part 1)



- Unscrew the four M2.5x4mm Phillips screws. One screw is located at each corner.

Step 12 — Remove LCD Screen (Part 2)



- Gently lift the LCD screen and flip it over.
- On back of the LCD screen, locate the protective tape in the bottom right corner. Peel off the tape to reveal a latch with a connector cable.
- Flip the latch so that the connector cable can be removed. Remove the connector cable by pulling downwards.
- The old LCD is now completely disconnected and you are ready to install a new LCD screen.

To reassemble your device, follow these instructions in reverse order.