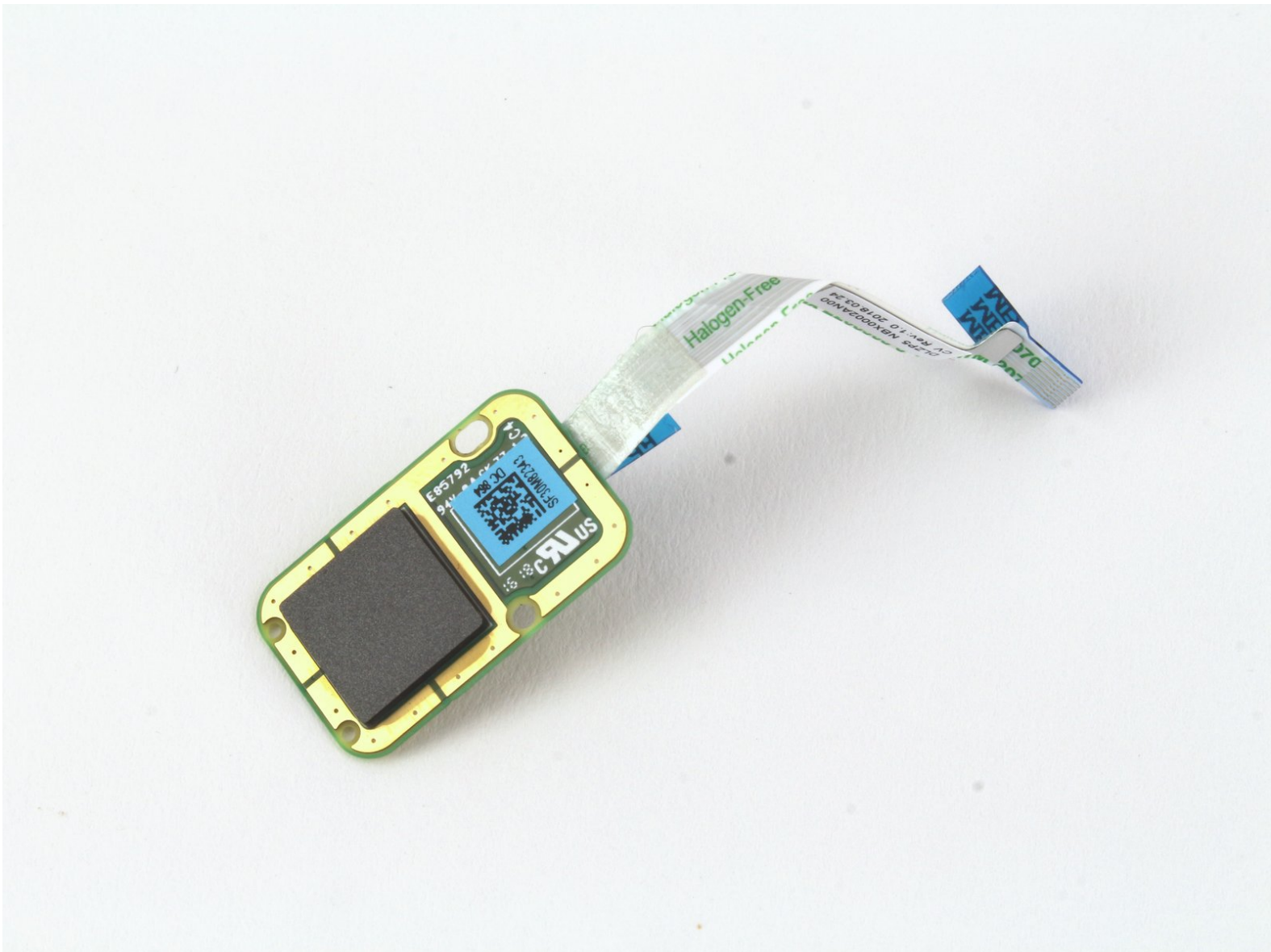




# Lenovo YOGA 730-15IKB Fingerprint Reader Replacement

This guide describes the steps required to replace the fingerprint reader on a Lenovo YOGA 730-15IKB.

Written By: Daniel Rodriguez Salinas



## INTRODUCTION

Follow this guide to replace the fingerprint reader in your Lenovo YOGA 730-15IKB. The fingerprint reader recognizes your unique fingerprint and allows you to easily unlock the laptop.

See the [troubleshooting page](#) first to diagnose any software issues related to the fingerprint reader. If your fingerprint reader is scratched or does not recognize your fingers, you might need to replace it with a new, functional model.




### TOOLS:

- [ESD Safe Tweezers Blunt Nose](#) (1)
  - [T5 Torx Screwdriver](#) (1)
  - [iFixit Opening Tools](#) (1)
  - [Phillips #1 Screwdriver](#) (1)
-

## Step 1 — Bottom Cover



 Turn off the computer and unplug the charger before going any further.

- Flip the laptop over so you can see the underside.
- Remove ten 7mm T5 Torx screws.

## Step 2



- Pry up the bottom cover with an opening tool.
  - Start at the front edge of the cover and make your way along the sides.

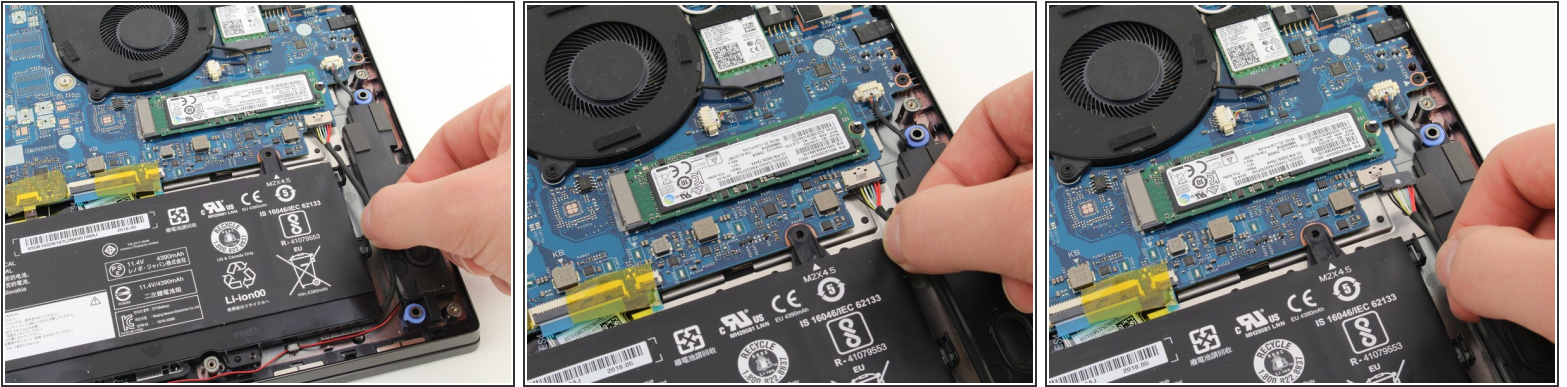
## Step 3



- Pull the bottom cover up and away from the back hinges.



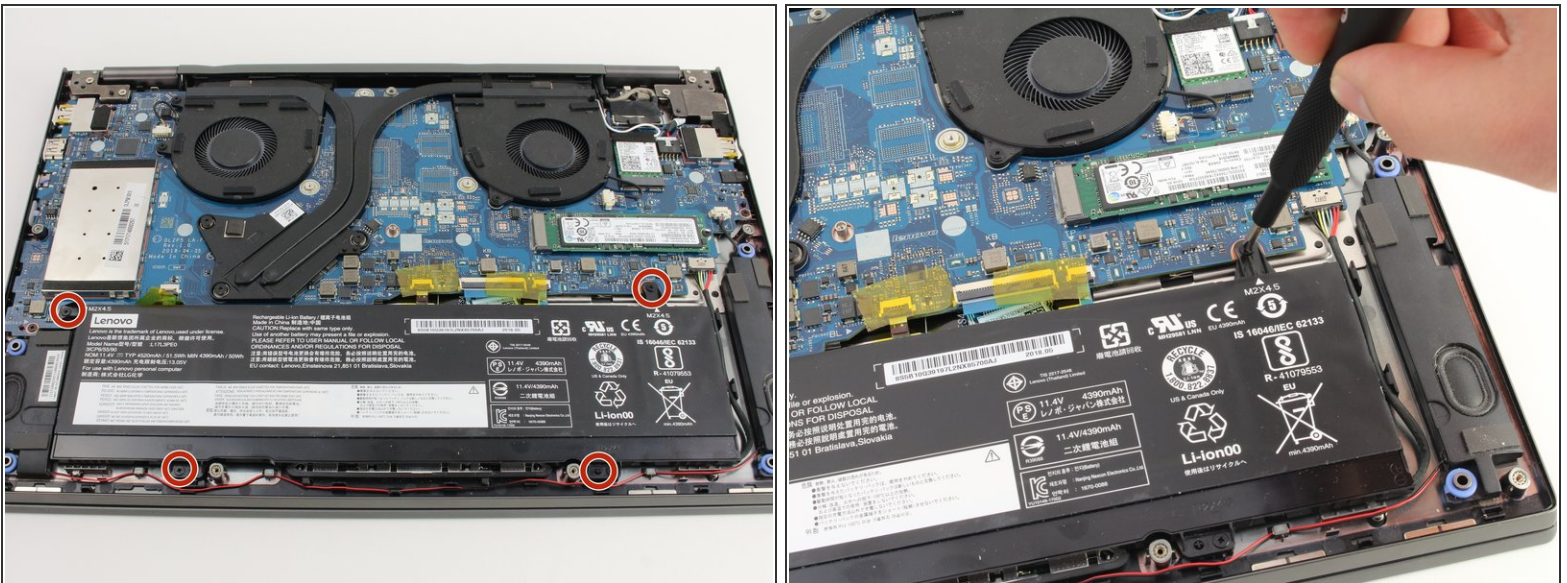
## Step 4 — Battery



- Remove the battery connector by tugging and wiggling the battery wire using your fingers or a pair of tweezers.

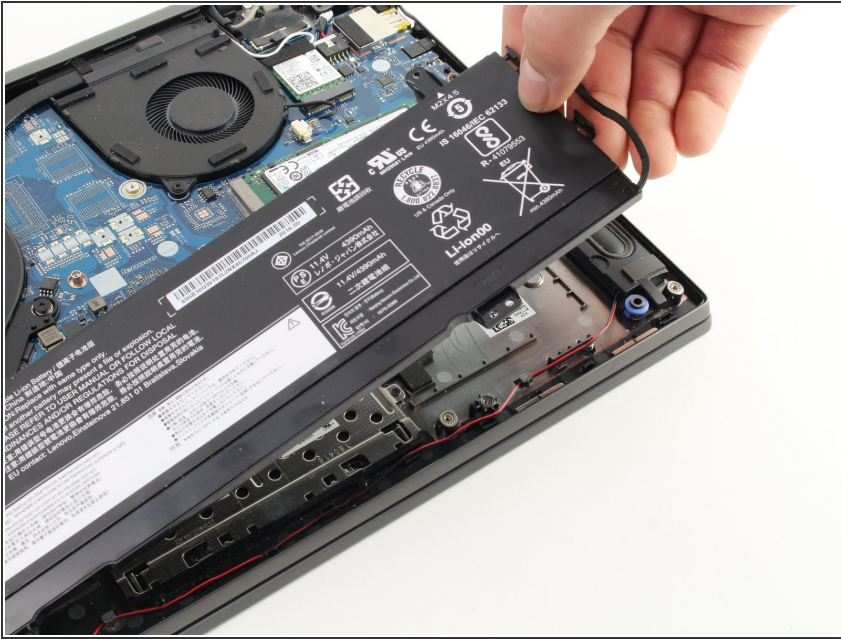
⚠ Unplug the cable gently as the eight wires on the connector are very small and delicate.

## Step 5




- Remove four 4mm Phillips #1 screws.

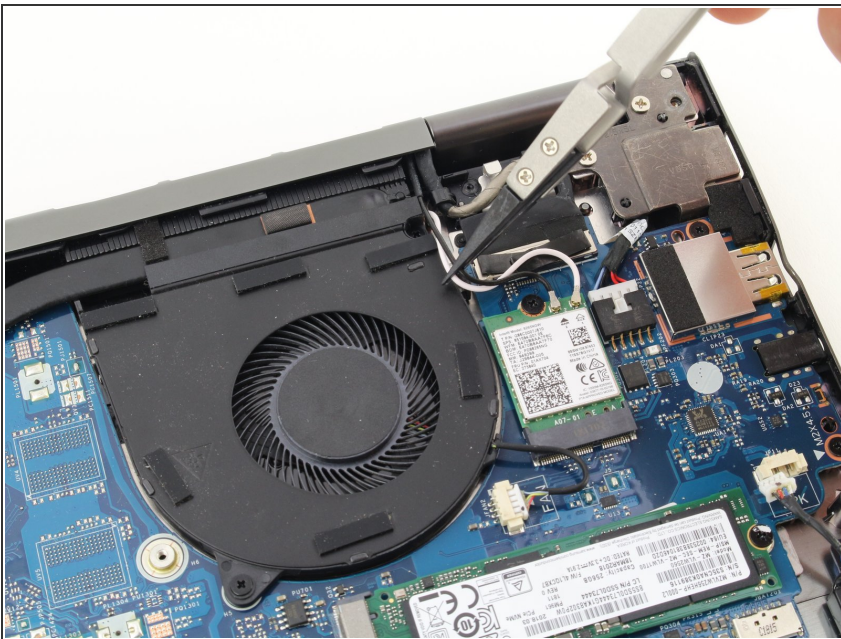
## Step 6




- Pull the battery up and out of the chassis.

 Handle the battery carefully. Touching the terminal may cause electric shock. Puncturing the battery may cause it to catch fire.

## Step 7 — Left Fan

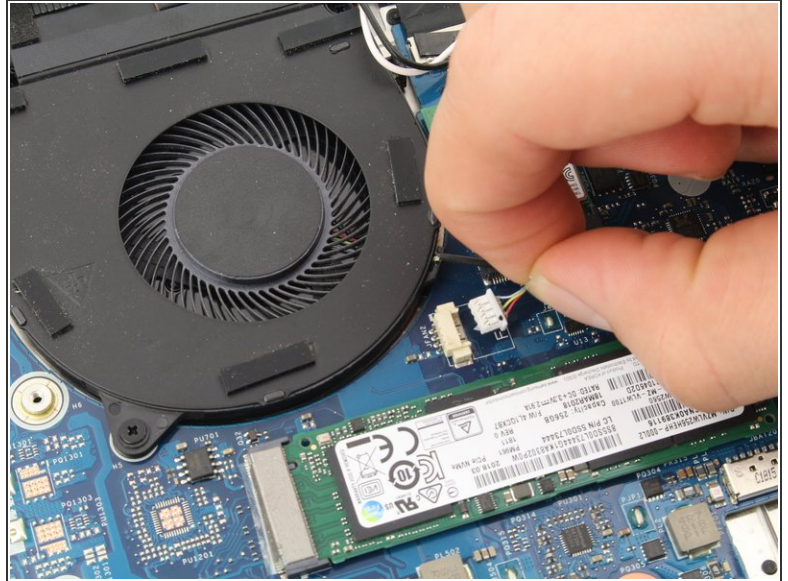
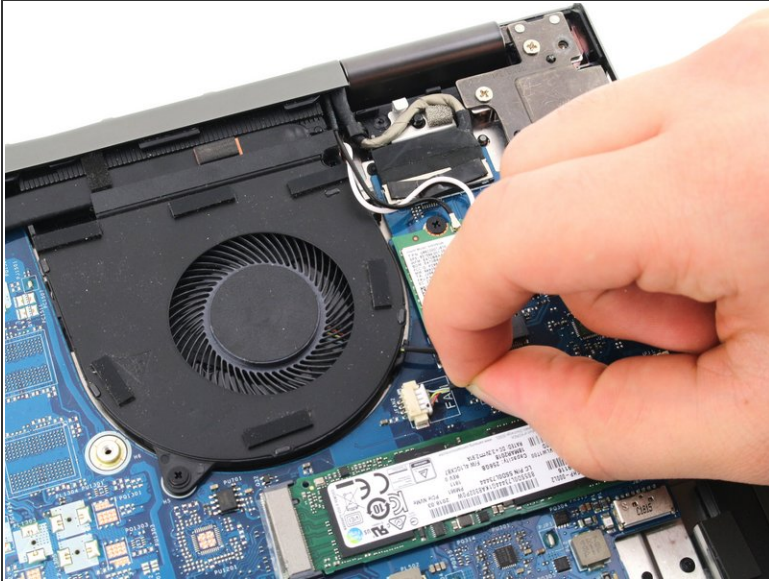


 When the laptop is upside down, the left fan is on the right side of the laptop near the wireless card and the SSD.

- Remove the black and white antenna wires from the groove on the right side of the fan.

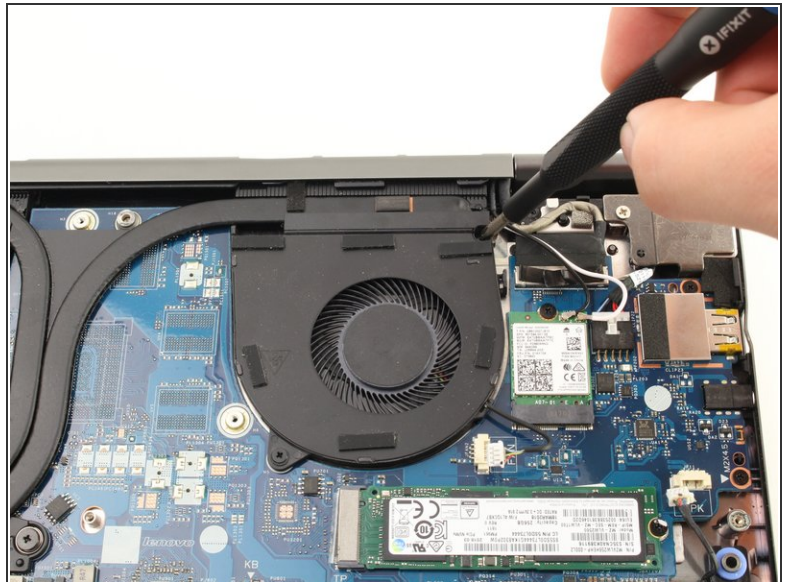
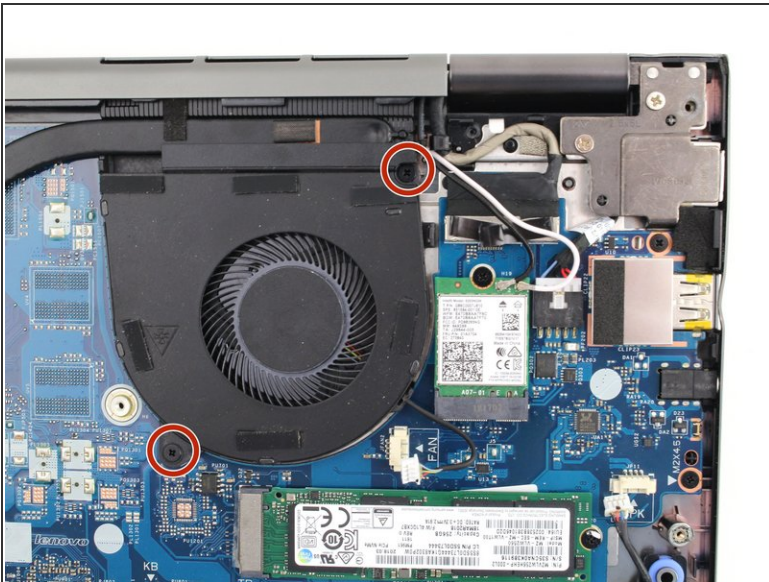


## Step 8



- Disconnect the fan cable. Pull the wire toward the right side of the laptop while wiggling to loosen the connection.
- You can also use the white tabs on the connector to push the cable free.

## Step 9



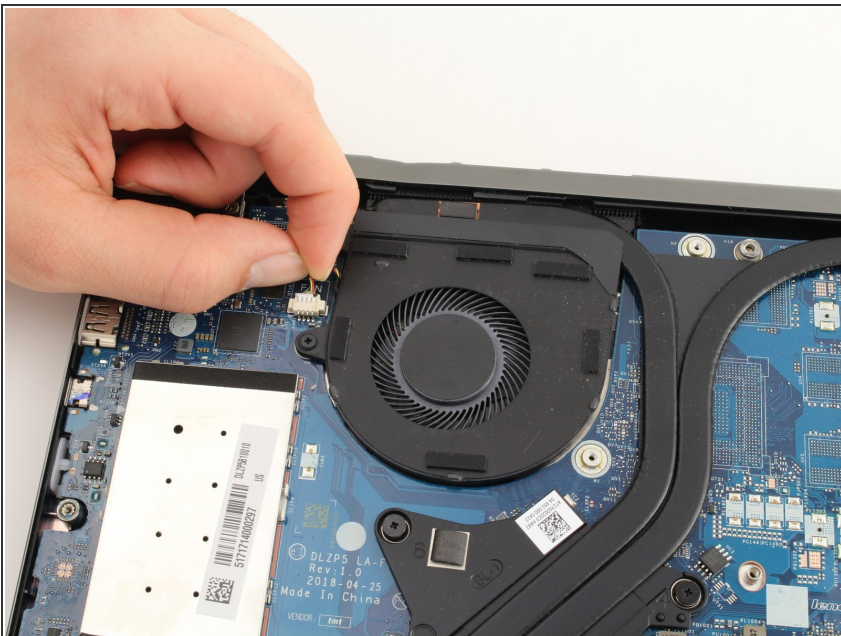
- Remove two 4mm Phillips #1 screws.

## Step 10



- Pull the fan up and towards the front of the laptop.

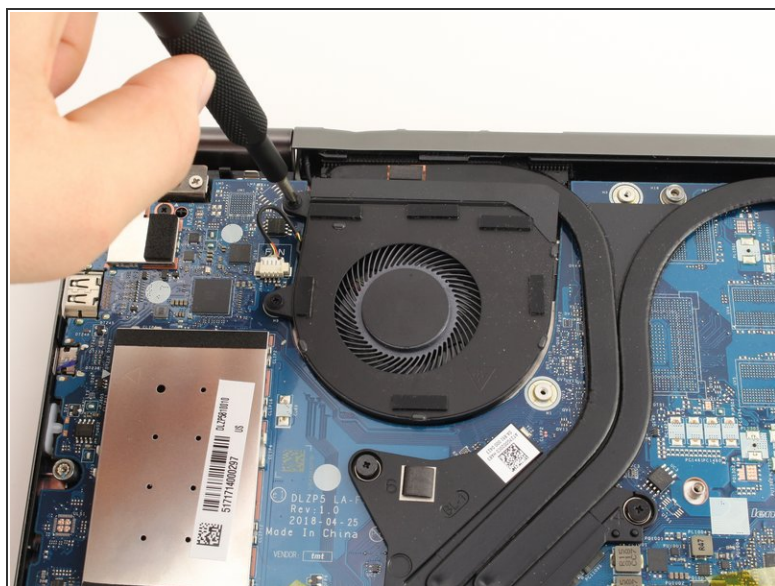
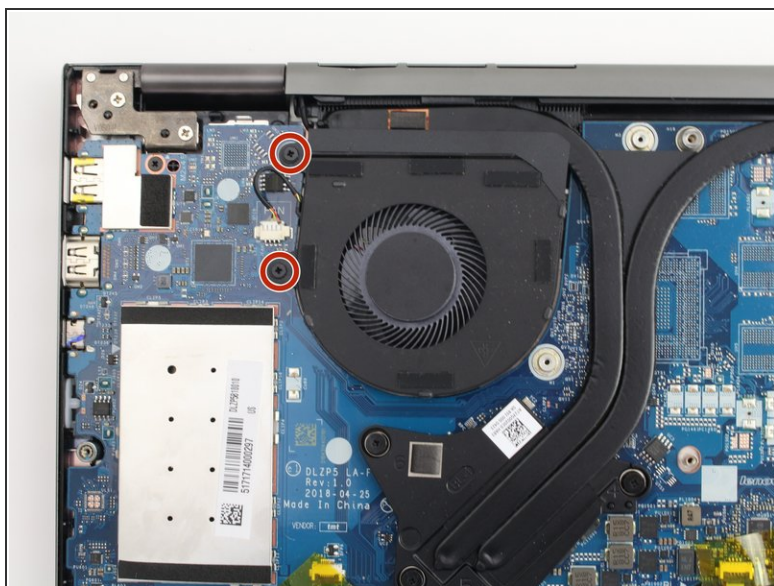
## Step 11 — Right Fan



- ⓘ When the laptop is upside down, the right fan is on the left side of the laptop near the large metal RAM cover.
- Disconnect the fan cable. Pull the wire toward the back of the laptop while wiggling to loosen the connection.
- You can also use the white tabs on the connector to push the cable free.



## Step 12



- Remove two 4mm Phillips #1 screws.

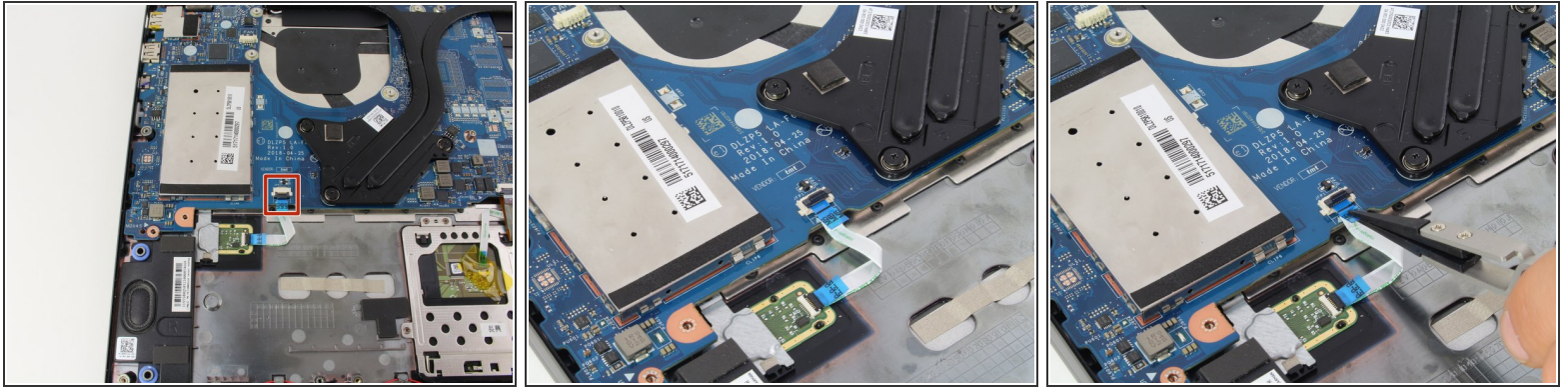
## Step 13



- Pull the fan up and towards the front of the laptop.

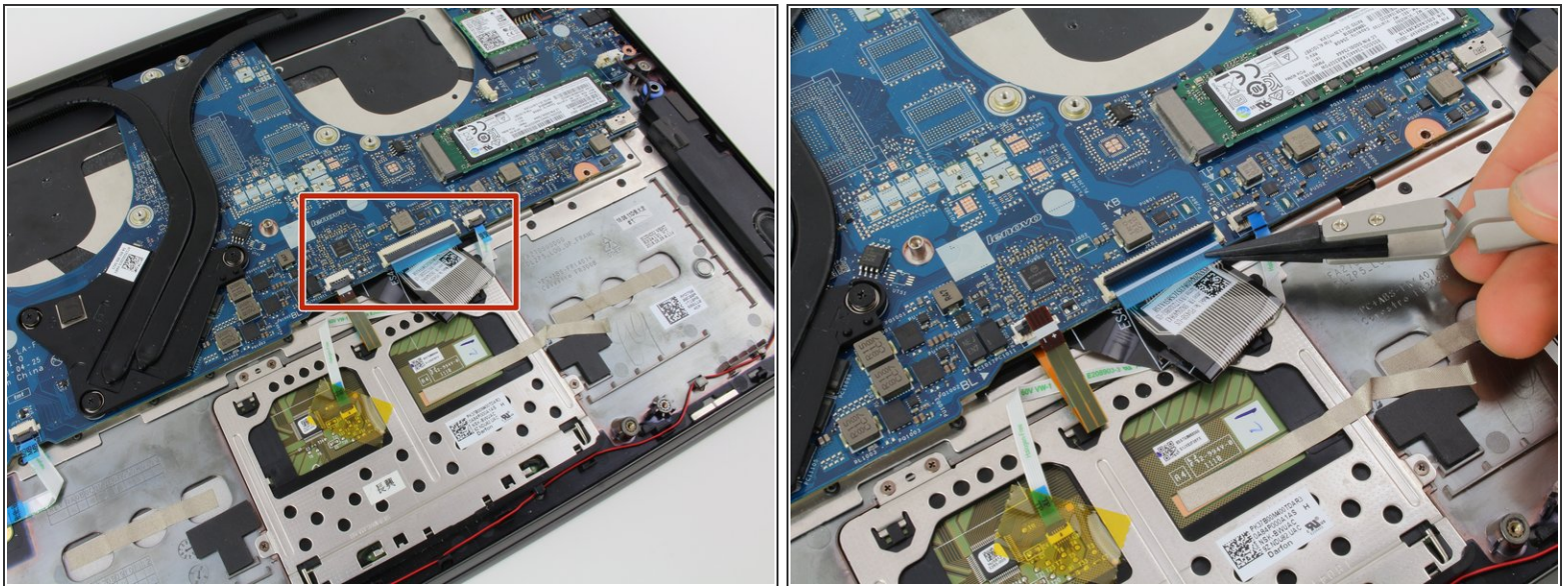


## Step 14 — Motherboard



- Remove the fingerprint reader ribbon cable located at the bottom left of the motherboard.
  - Pull up on the black tab on the connector.
  - The ribbon cable should easily pull out of the connector.

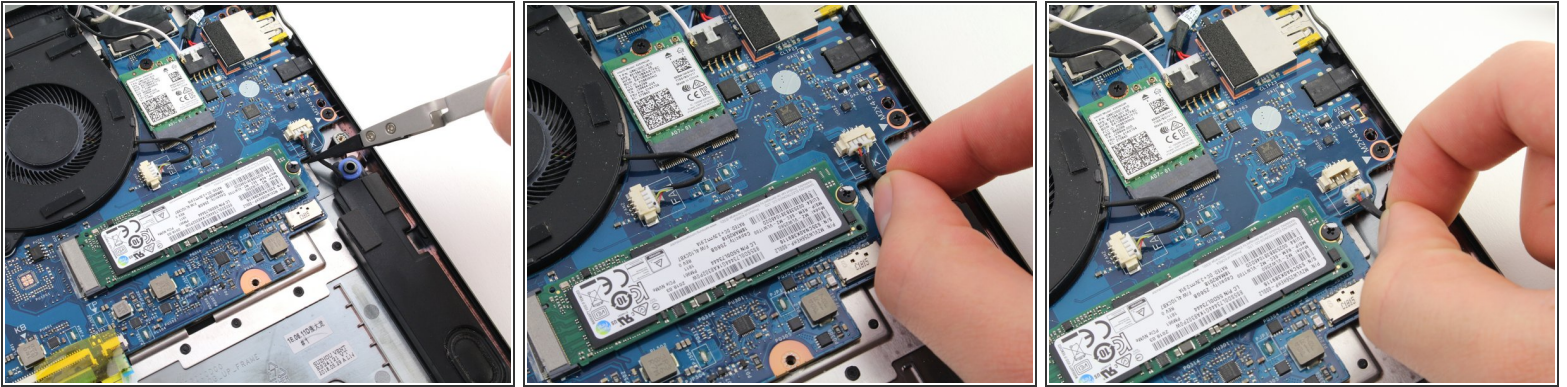
## Step 15



- Remove the three other ribbon cables at the lower edge of the motherboard.
  - For each, lift up the black tab on the connector.
  - The ribbon cables should easily pull out of the connectors.



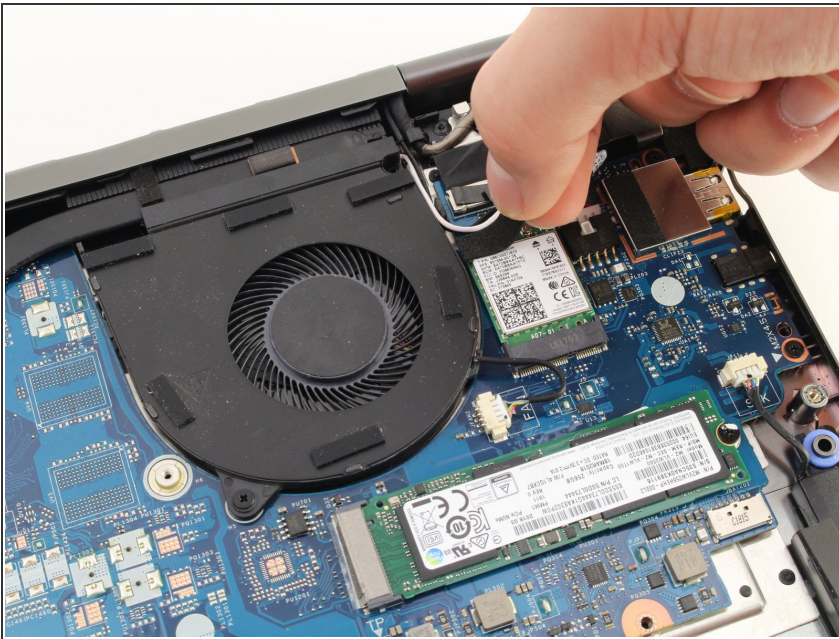
## Step 16



- Disconnect the speaker cable by pulling the wire towards the front of the laptop.

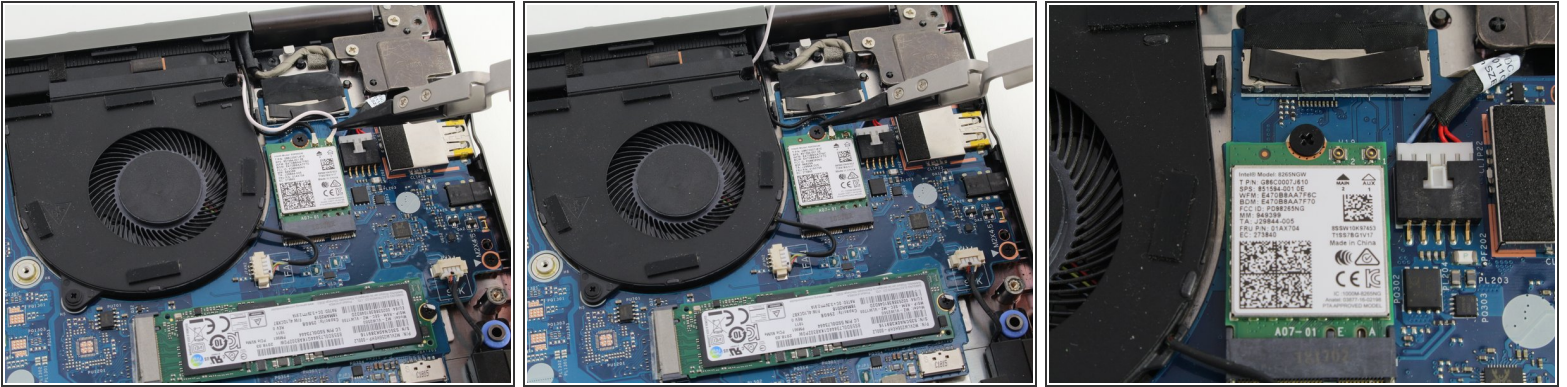
**i** You can also use the white tabs on the connector to push the cable free.

## Step 17



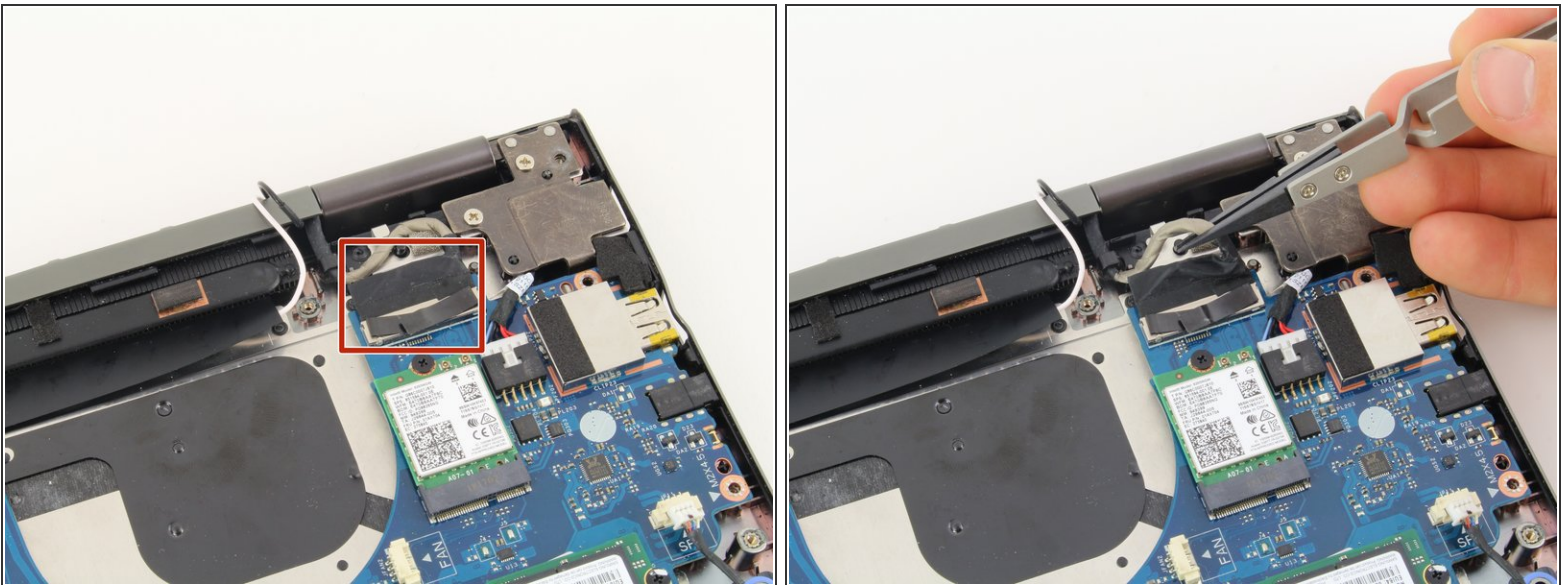
- Remove the sticky tape from the top of the wireless card.

## Step 18



- Pull the black and white antenna wires off of the wireless card.
- ☑ For reassembly, the white wire connects to the right terminal marked "1." The black wire connects to the left terminal marked "2."

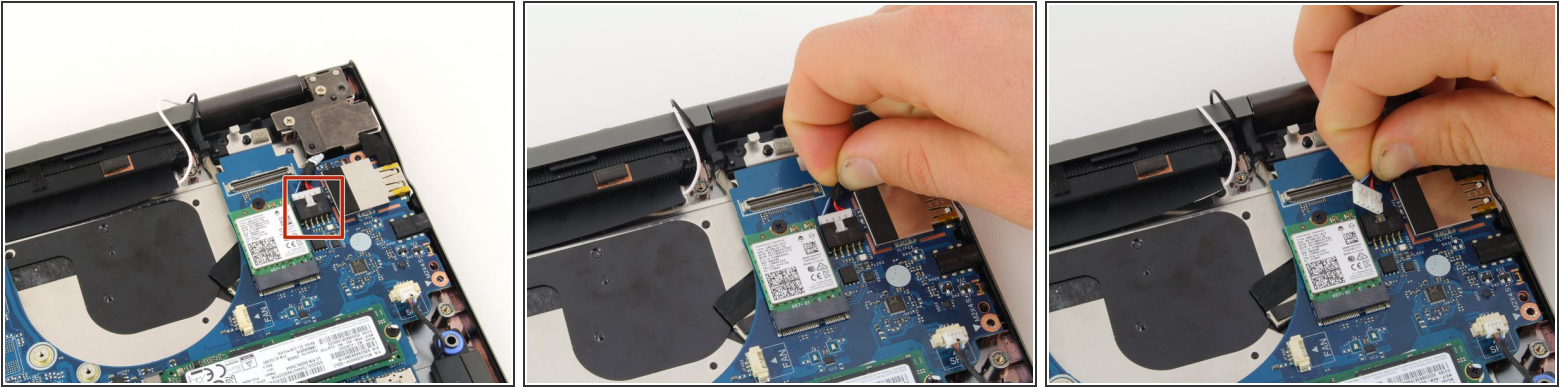
## Step 19





- Pull up on the thick gray display cable near the back of the laptop to disconnect the display.

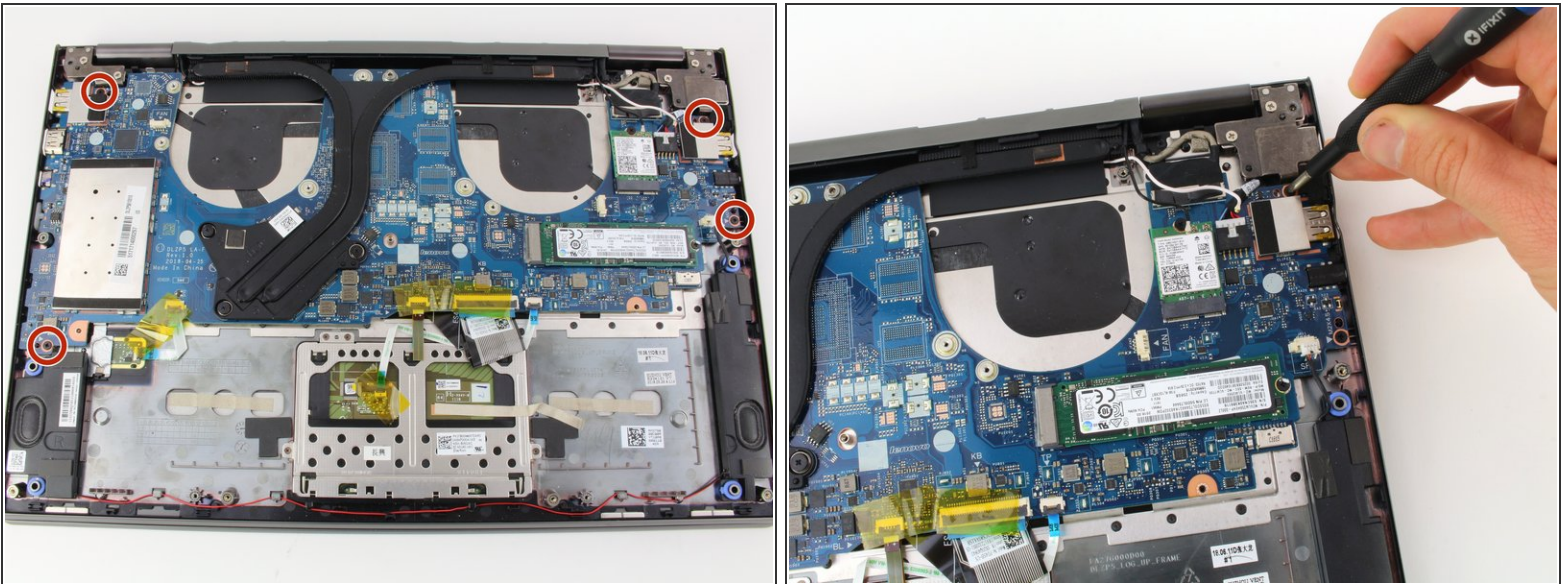


## Step 20



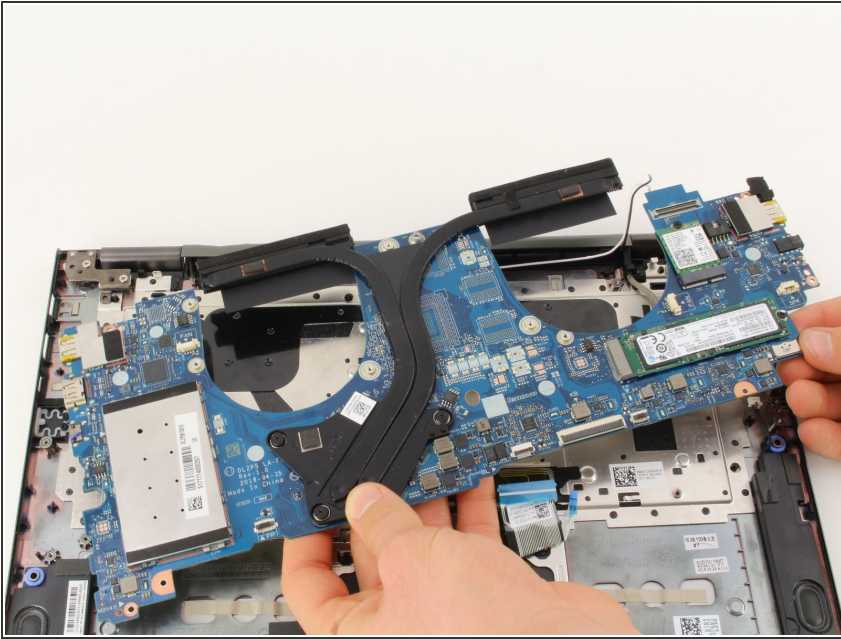
-  The charger port is connected to the computer by a cable at the top left of the motherboard.
- Disconnect the cable by pulling the bundle of wires firmly toward the back of the laptop.
-  The cable requires some force to remove. Make sure you do not damage the connector or cable.

## Step 21



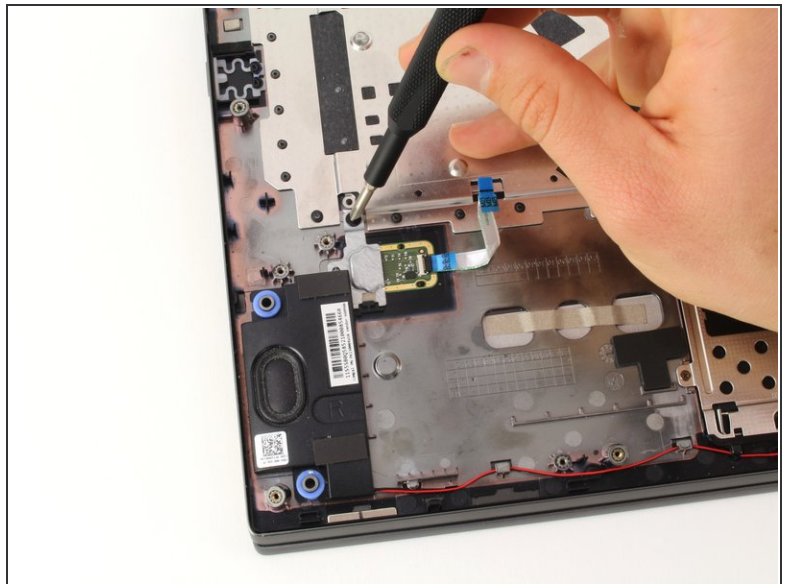
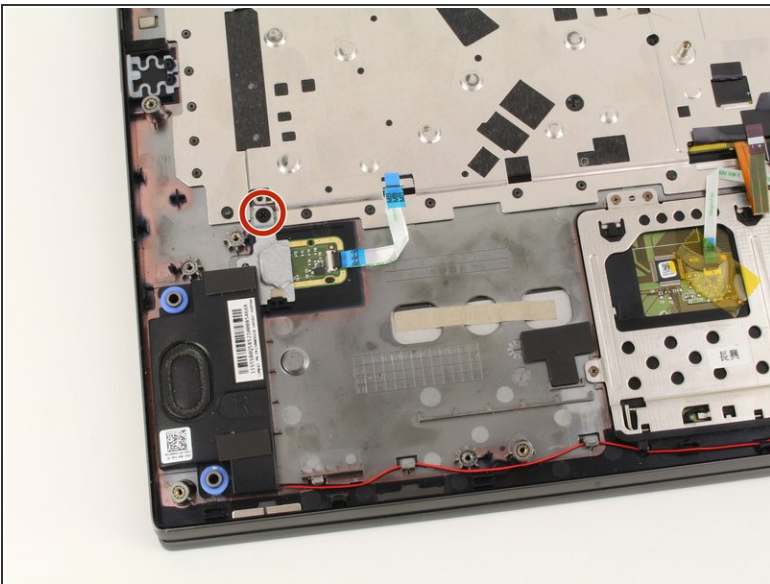
- Remove four 4mm Phillips #1 screws.

## Step 22



- Pull the motherboard up out of the laptop chassis.
- ⓘ If you are replacing the motherboard, make sure to remove the [SSD](#), [wireless card](#), [heat sink](#), and extra [RAM](#). Transfer these components to the new motherboard.

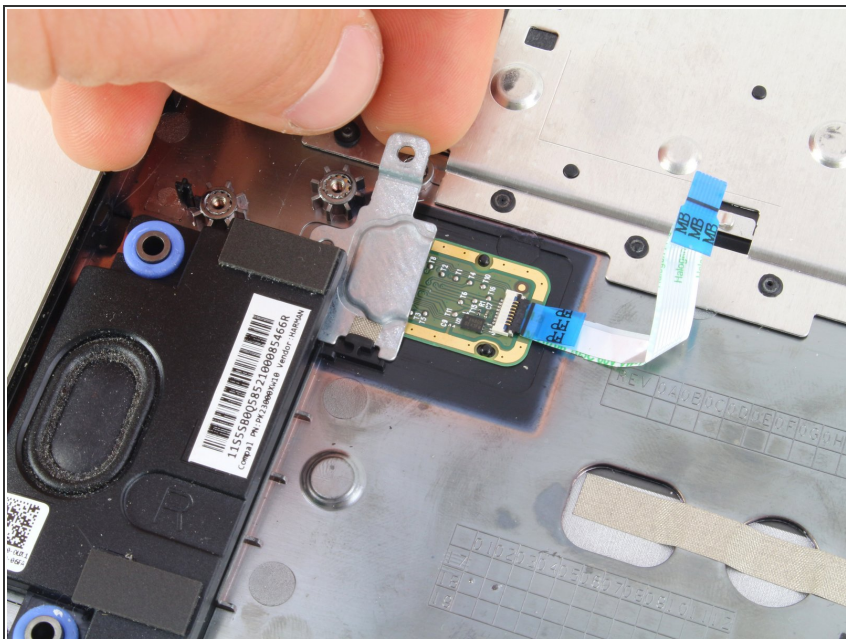
## Step 23 — Fingerprint Reader



- Remove one 2mm Phillips #1 screw.

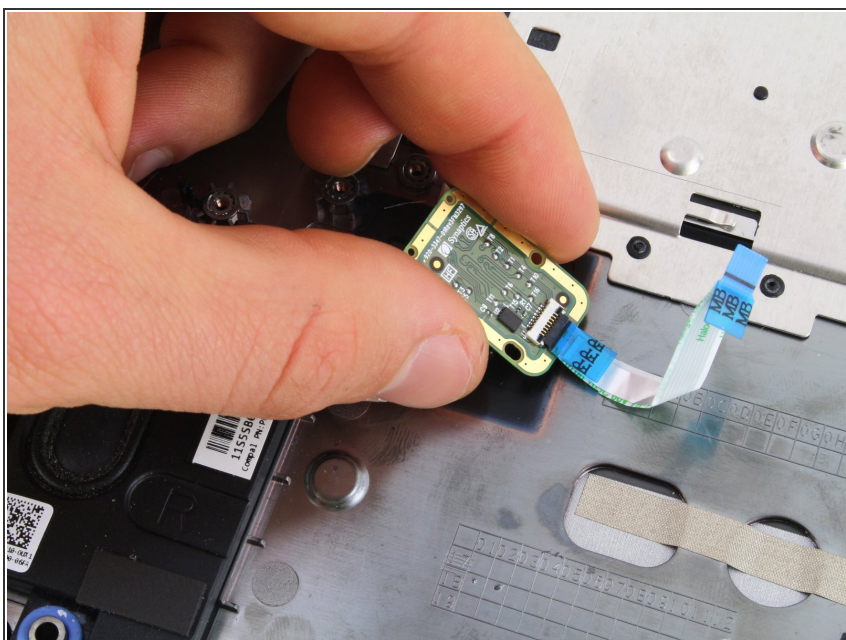


## Step 24



- Remove the small metal plate from above the reader.
- ❗ The ribbon should be kept in case the new fingerprint reader doesn't come with a new ribbon to connect it to the motherboard.

## Step 25



- Pull the fingerprint reader up out of the chassis.

To reassemble your device, follow these instructions in reverse order.