



# Lenovo YOGA 730-15IKB Wireless Card Replacement

This guide describes the steps required to replace the wireless card on a Lenovo YOGA 730-15IKB.

Written By: Ellis Ruckman



This document was generated on 2020-04-06 08:55:21 AM (MST).

---

## INTRODUCTION

Follow this guide to replace the wireless card in your Lenovo YOGA 730-15IKB. The wireless card allows you to connect to Wi-Fi networks and access the internet. If your connection is slow or flaky, it might be worthwhile to upgrade your wireless card.

Also see the [troubleshooting page](#) to diagnose potential software issues related to Wi-Fi.




### TOOLS:

- [T5 Torx Screwdriver](#) (1)
  - [iFixit Opening Tools](#) (1)
  - [Phillips #1 Screwdriver](#) (1)
  - [ESD Safe Tweezers Blunt Nose](#) (1)
-

## Step 1 — Bottom Cover

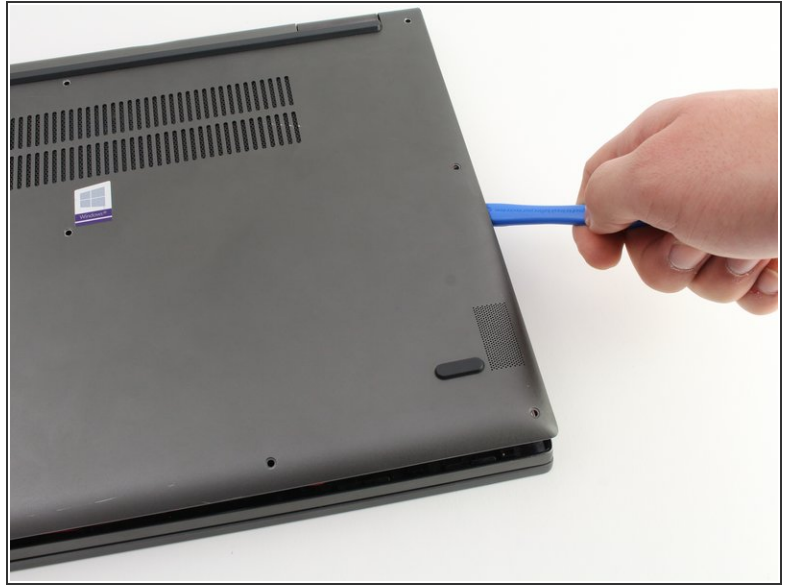


 Turn off the computer and unplug the charger before going any further.

- Flip the laptop over so you can see the underside.
- Remove ten 7mm T5 Torx screws.



## Step 2



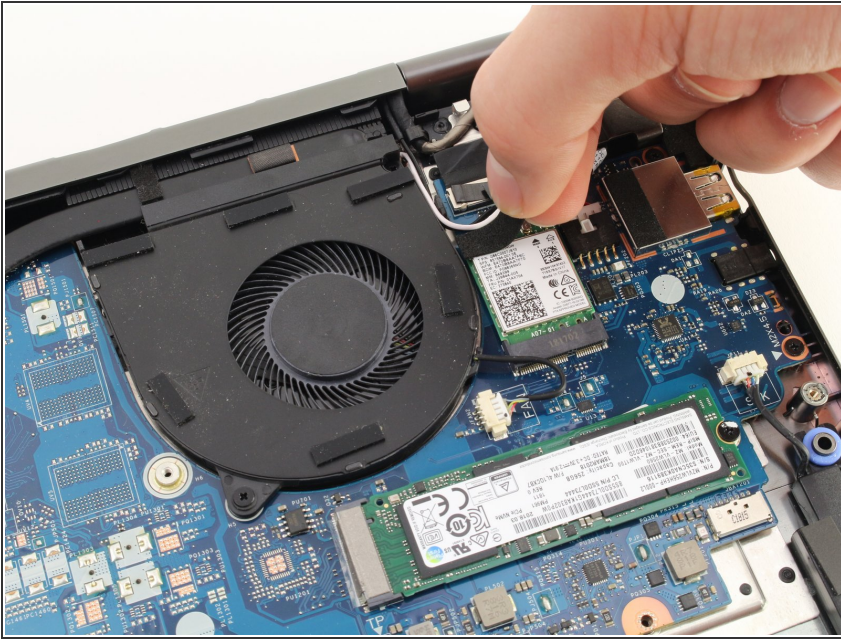
- Pry up the bottom cover with an opening tool.
  - Start at the front edge of the cover and make your way along the sides.

## Step 3



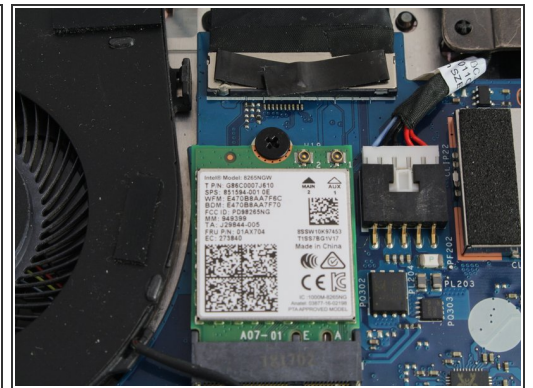
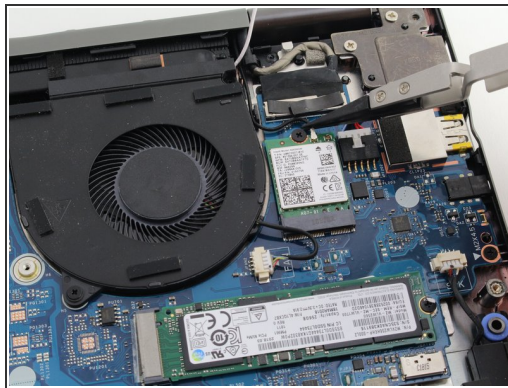
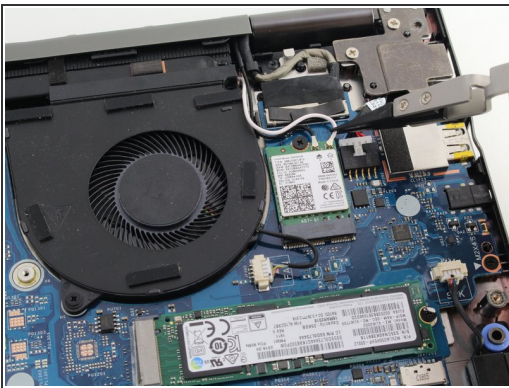
- Pull the bottom cover up and away from the back hinges.

## Step 4 — Wireless Card



- Remove the sticky tape from the top edge of the wireless card.

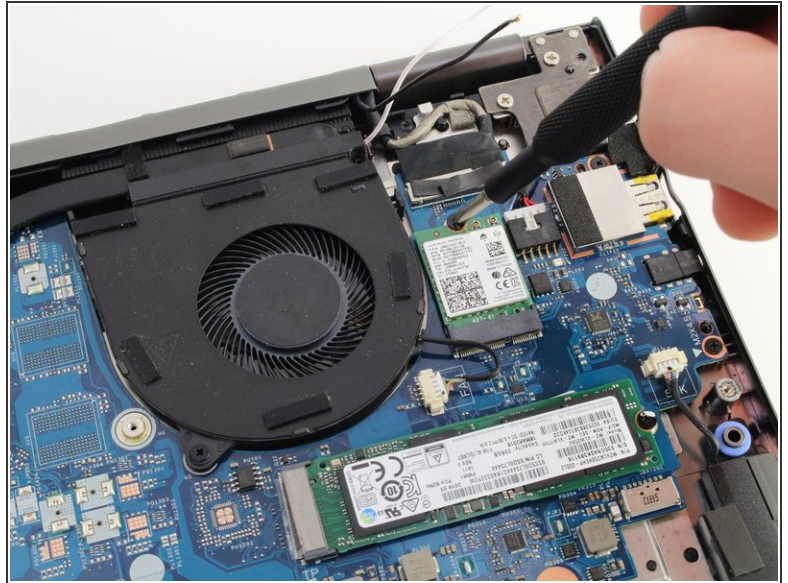
## Step 5



- Pull the black and white antenna wires off of the wireless card.
- ✦ For reassembly, the white wire connects to the right terminal marked "1." The black wire connects to the left terminal marked "2."

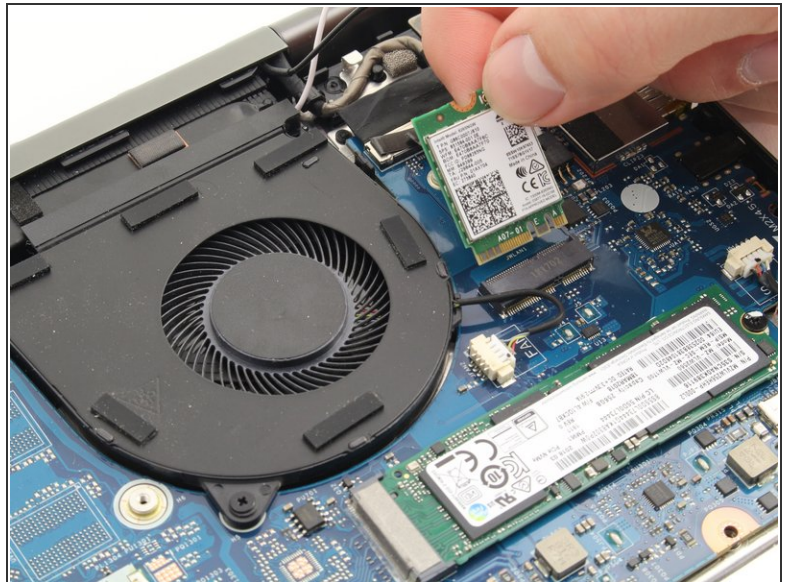
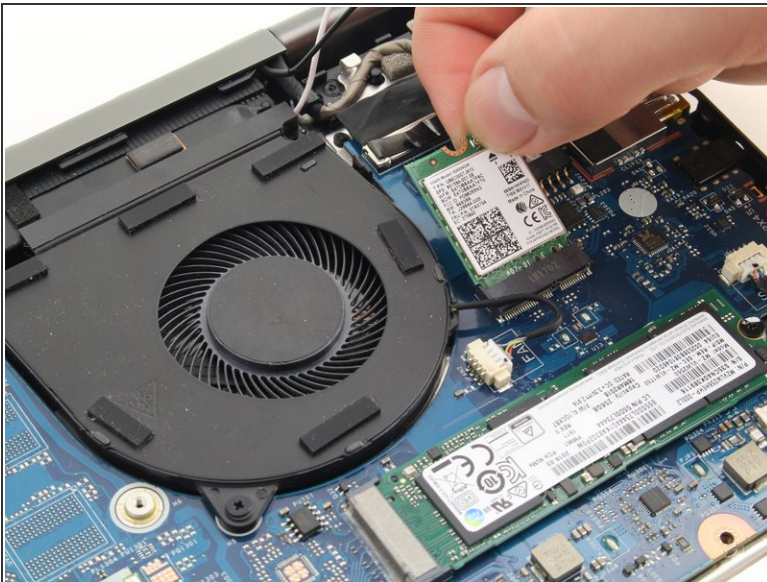


## Step 6



- Remove one 2mm Phillips #1 screw.

## Step 7



- Pull the wireless card out of the socket at its resting angle.
- Do not pull straight upward. Pull towards the hinges at the back of the laptop.

To reassemble your device, follow these instructions in reverse order.