



Lenovo Yoga 11e Chromebook Keyboard Replacement

In this repair, you'll be shown step by step on how to replace the keyboard.

Written By: Corey Meyer



Step 1 — Keyboard



- There will be 7 Philips head screws on the bottom which will need to be removed to gain access to the battery

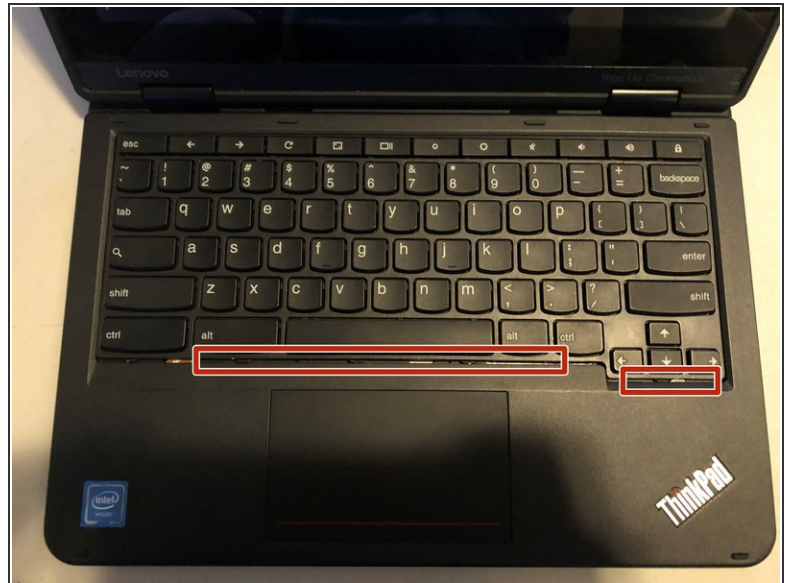
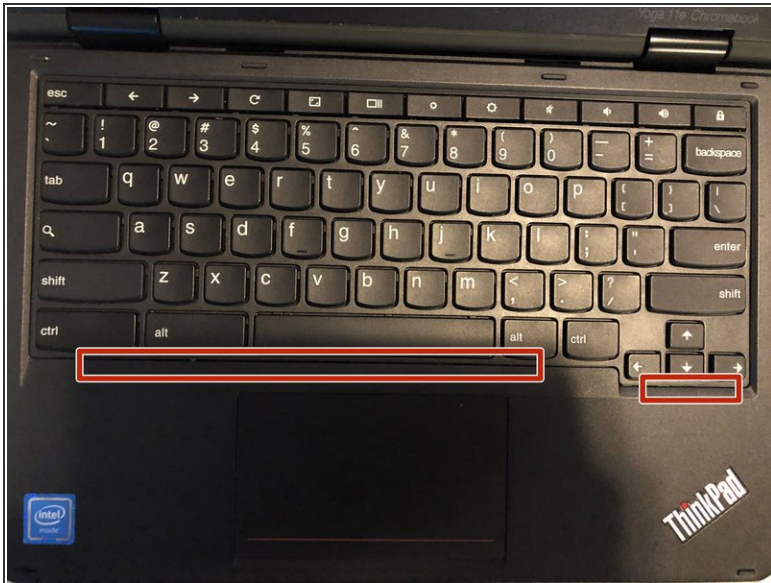
i NOTE: You may void your warranty completing this replacement

Step 2



- There are two screws that will need to be removed to access the keyboard.

Step 3



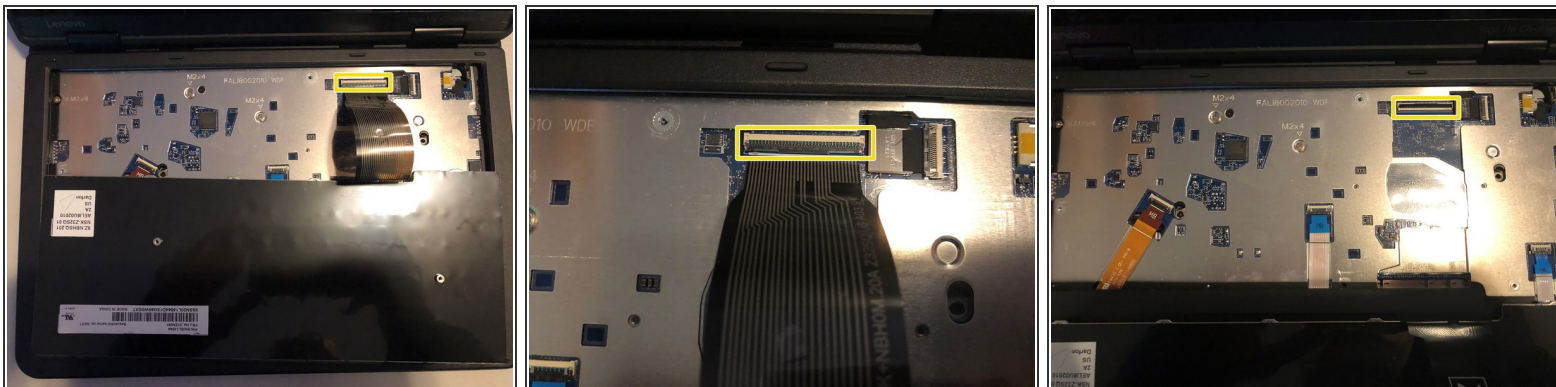
- Next, flip the laptop over and open it up. The keyboard can be easily removed by pushing it back from the front. I suggest using a jimmy tool to slip into the tiny gap to push it back.
- ⓘ Look closely at the two images you'll notice a slight gap at the bottom if you did this step correctly

Step 4



- Pull slightly up from the keyboard but NOT all the way, the ribbon cable is still connected to the motherboard

Step 5



- Use a plastic pry tool to lift up the plastic clip holding down the ribbon cable. Be very gentle with it so it doesn't break

Congratulations you've successfully removed the keyboard! To reassemble your device, follow these instructions in reverse order.