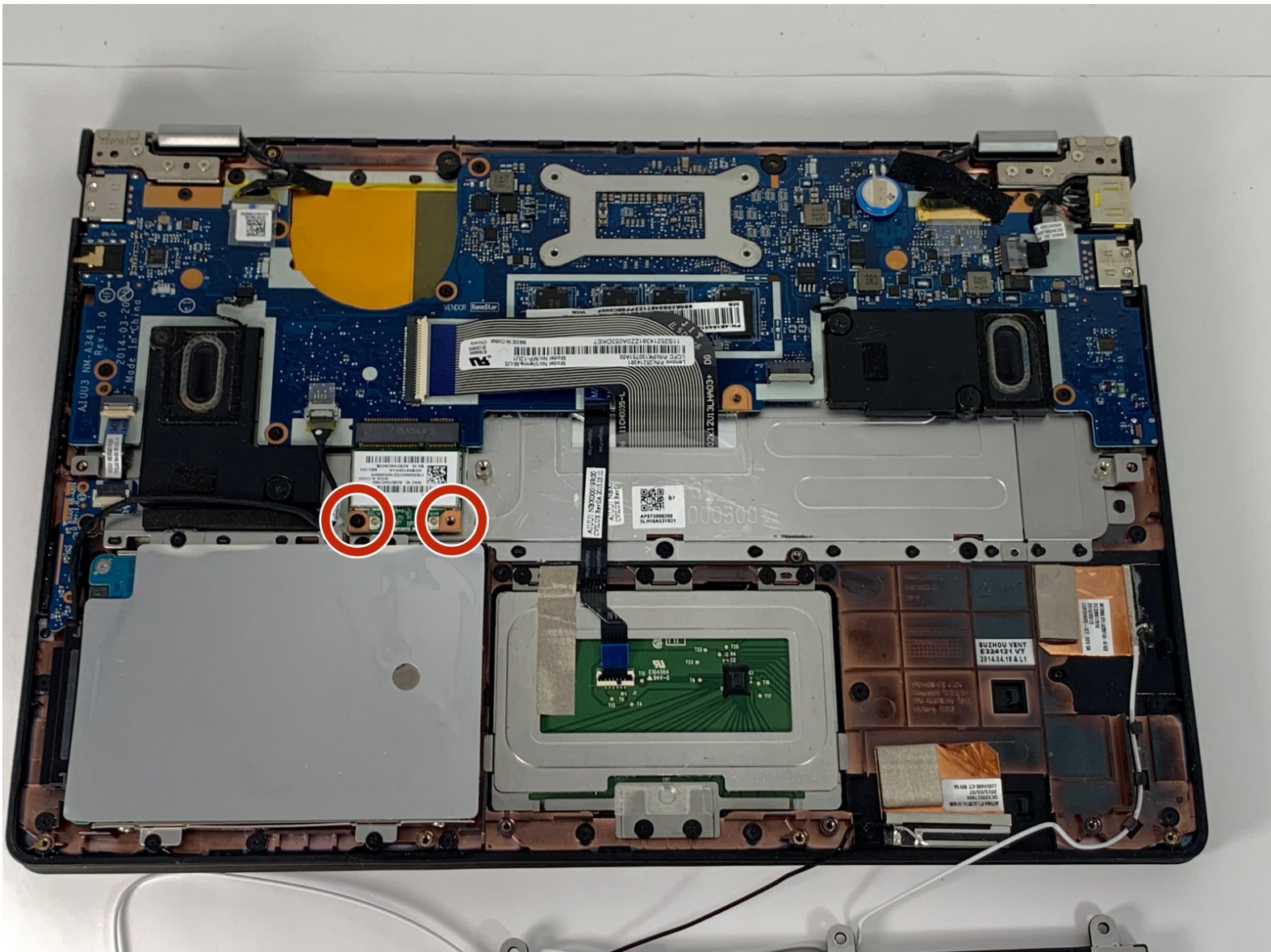




Lenovo Yoga 2 11" 20428 Bluetooth Module Replacement

This guide will show how to properly remove and replace the bluetooth module in the Lenovo Yoga 2 11" with serial 20428.

Written By: Joshua Thomas Tyler



This document was generated on 2020-01-24 06:16:32 PM (MST).

INTRODUCTION

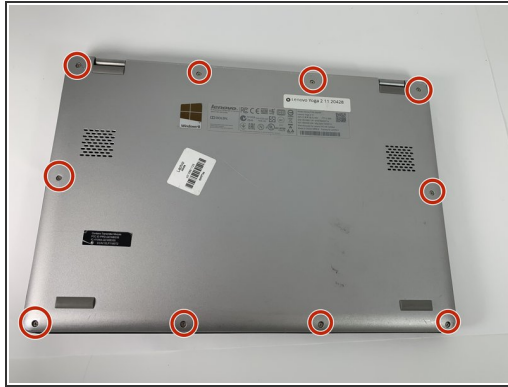
If your Bluetooth module is not working correctly, it may need to be replaced. This guide shows the step-by-step process of removing and/or replacing the blue tooth module in a Lenovo Yoga 2 11" 20428. You will need a Phillips head screw driver that corresponds to the screw size listed in the guide.



TOOLS:

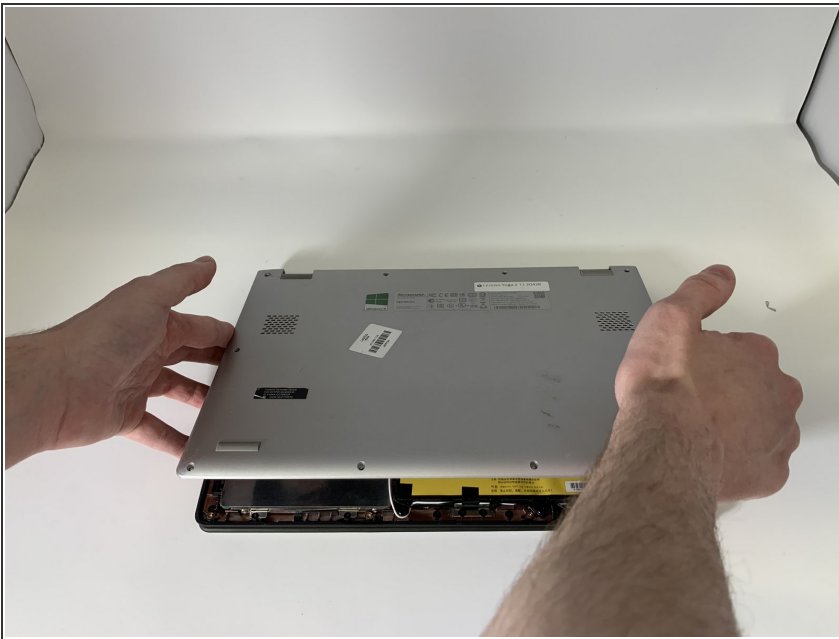
- [Phillips #00 Screwdriver](#) (1)
 - [T4 Torx Screwdriver](#) (1)
-

Step 1 — Back Panel



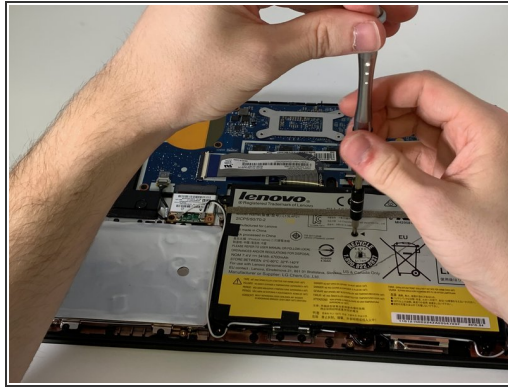
- Flip the computer over so the bottom is facing up.
- Remove the ten 6mm screws with a T4 Torx security screwdriver.

Step 2



- Carefully remove the back panel by gently prying the panel from the front to the back.
- ⚠ Take care not to pull any wires or crack the outer shell.

Step 3 — Battery



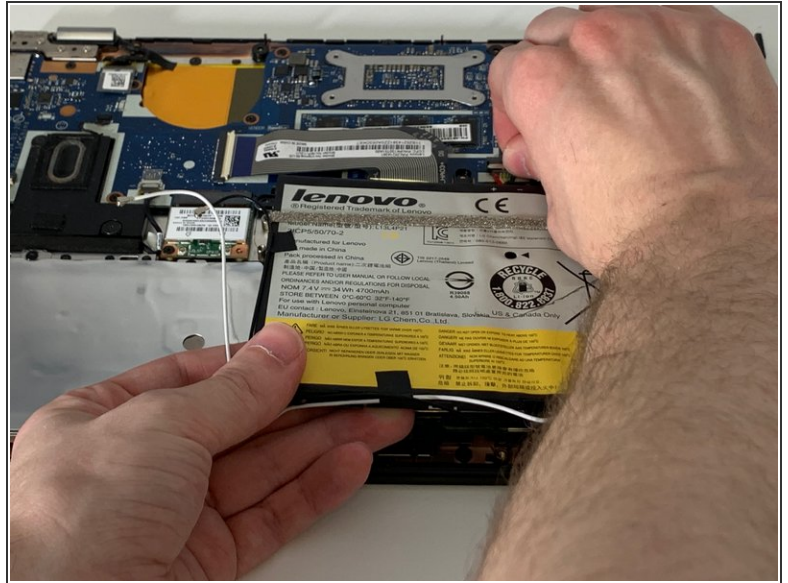
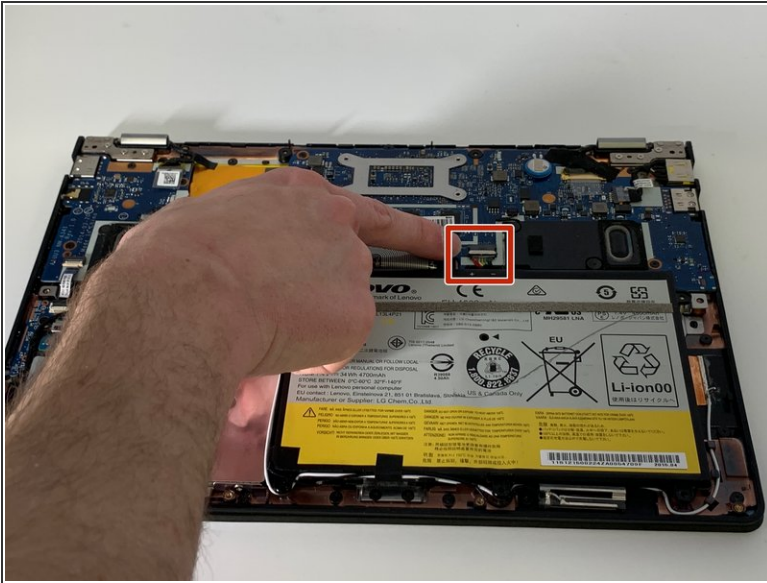
- Remove six 3.3 mm Phillips #00 screws around the perimeter of the battery.
- Remove one 6.75 mm Phillips #00 screw from the center of the battery.

Step 4



- Remove the pieces of tape securing the bluetooth/wifi antenna.

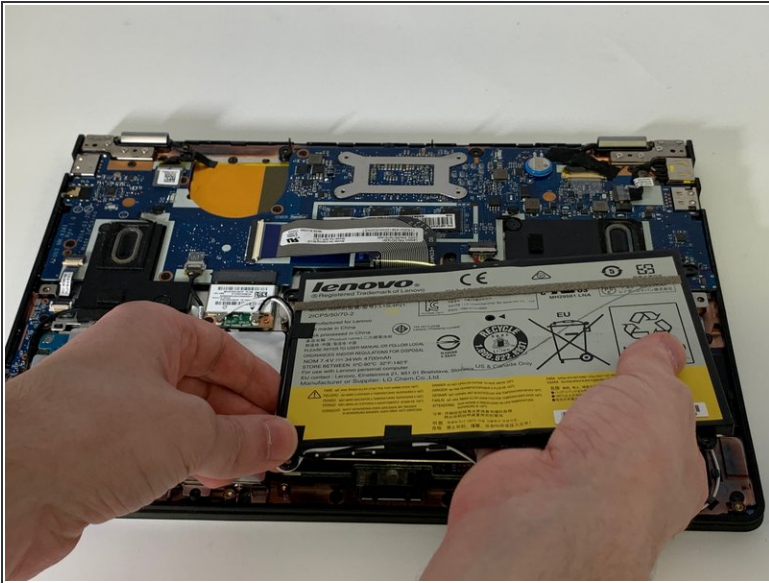
Step 5



- Grip the base of the connector with your fingers or pliers, and gently pull the connector straight back towards you to remove it.

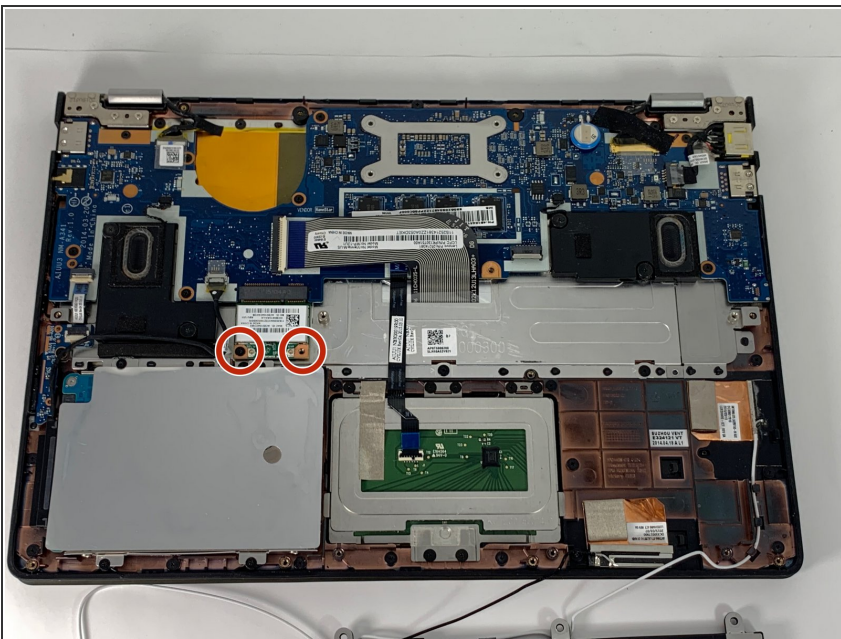
⚠ If possible try not to pull the connector out by the wires, as this can damage the connector.

Step 6



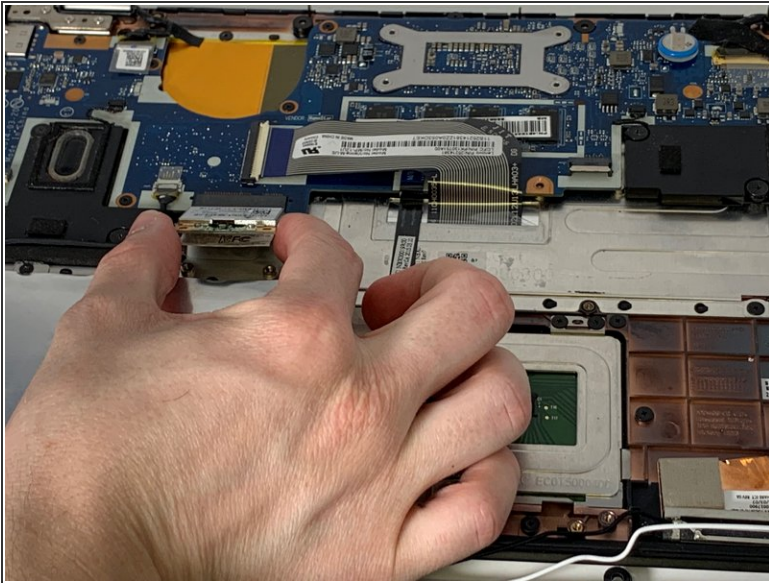
- Carefully remove the battery from the laptop.
- ⚠ Take care not to pull out the Bluetooth antenna while removing the battery.

Step 7 — Bluetooth Module



- Remove two 3.3 mm Phillips #00 screws.

Step 8



- Grab and gently remove the Bluetooth module.

To reassemble your device, follow these instructions in reverse order.