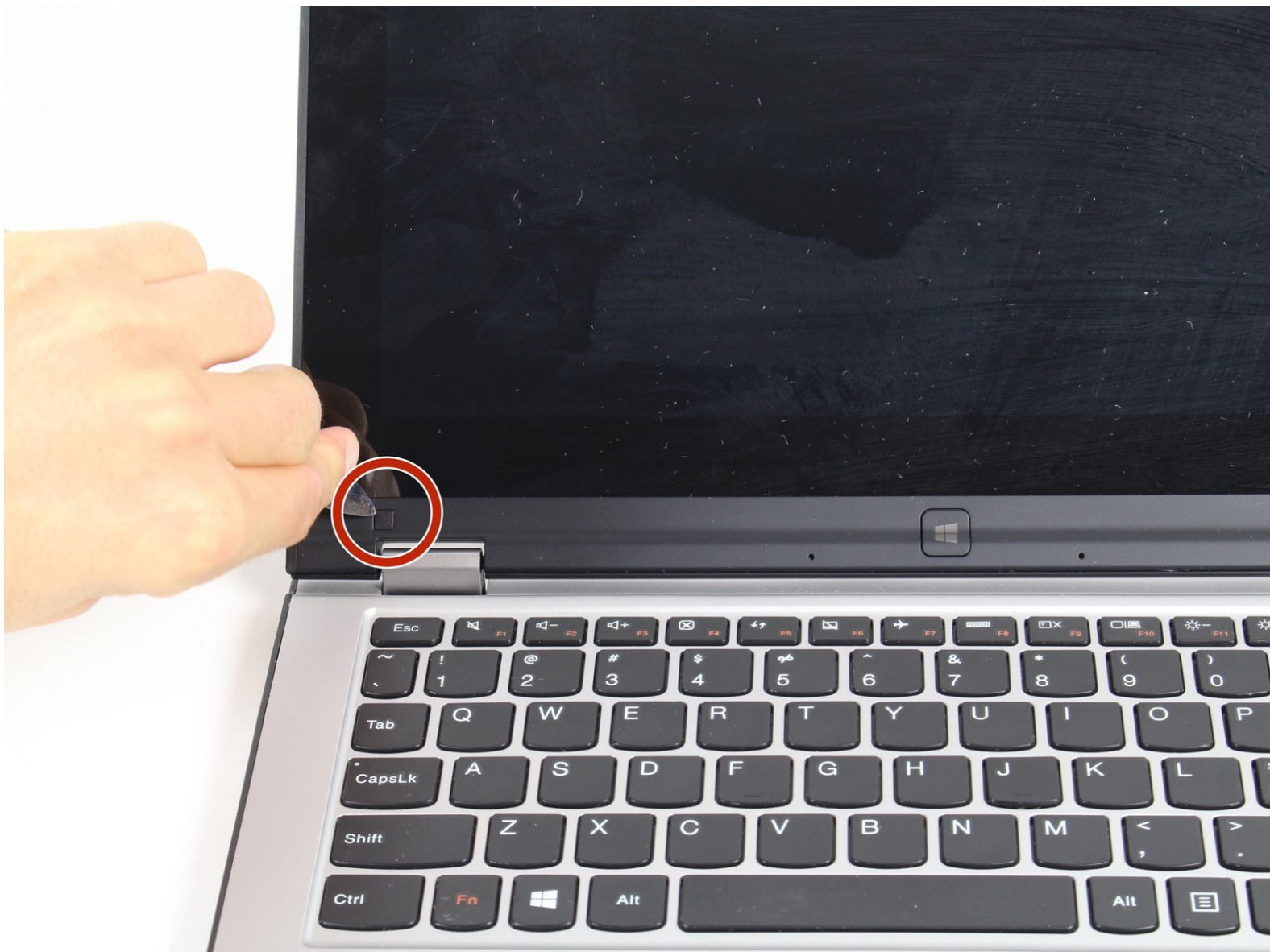




Lenovo Yoga 2 11" Screen Replacement

This guide will show you how to safely remove and replace a broken screen.

Written By: Peyton Leeson



INTRODUCTION


To replace the screen you need to make sure that the hinges are up before you pry off the screen. If not, this will result in a broken screen and will be difficult to replace.

TOOLS:

- [Phillips #00 Screwdriver](#) (1)
 - [Metal Spudger](#) (1)
 - [iFixit Opening Tools](#) (1)
-

Step 1 — Screen




 Make sure to unplug the device and disconnect the battery to avoid injury.

- Locate the small rubber rectangles on either side of the computer, under the screen.
- Underneath each of these rectangles is a 3mm screw. Using a Philips 00 screwdriver, take out these screws.

Step 2



 Flip keyboard under the screen for ease of repair.

- Using a plastic opening tool, carefully remove the small plastic piece at the bottom of the screen.

Step 3



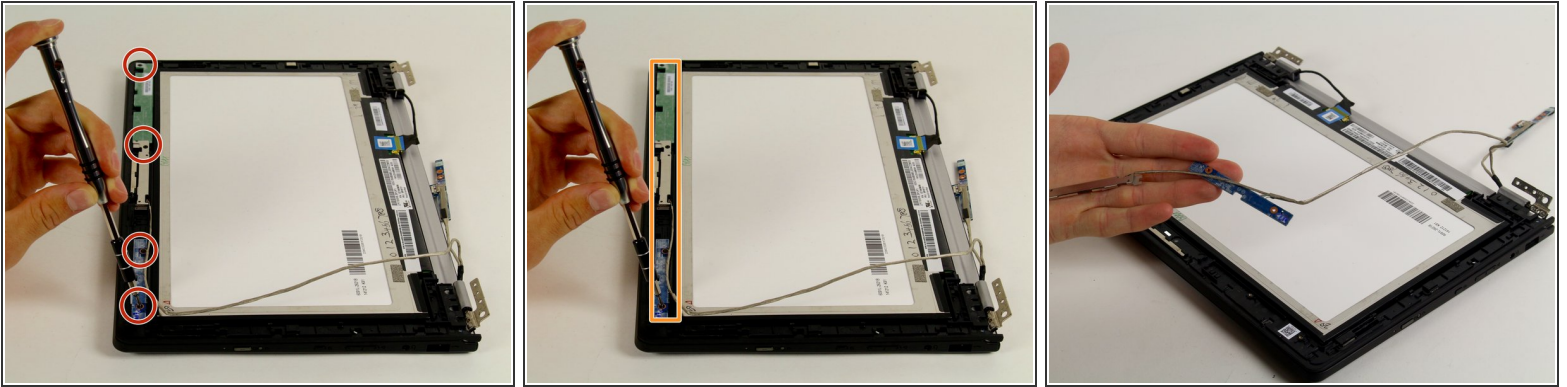
- Using a Philips 00 Screwdriver, remove the nine screws of varying sizes that connect the screen to the rest of the computer (four near each of the hinges, one in the center)

Step 4



- ⚠ Use caution when removing the screen from its back, as the screen is pretty fragile.
- ⓘ Open the computer and move the hinges up, then move the screen down. Hinges have to be up before you try to remove the screen.
- Hold the back side of the display panel firmly in place, and slide the screen up to unlock plastic tabs on the two halves of the display.
- ⓘ Note the open end of the hole where the screws are removed.
- ⚠ On some models, if you try to pry the two halves apart instead of sliding, it will break most of the tabs and the screen will not hold together when reassembled.

Step 5



- Using a Philips 00 Screwdriver, remove the four screws of varying sizes that connect the screen to other components of the computer.
- Once the screws have been removed, take out the components of the computer that are connected with wires.

Step 6



- Once the screen is completely free from the rest of the computer, you are able to remove and replace it.

To reassemble your device, follow these instructions in reverse order.