



Lenovo Yoga 2 13" Battery Replacement

Replacing the battery of the Lenovo 2 13".

Written By: Nichelle



INTRODUCTION

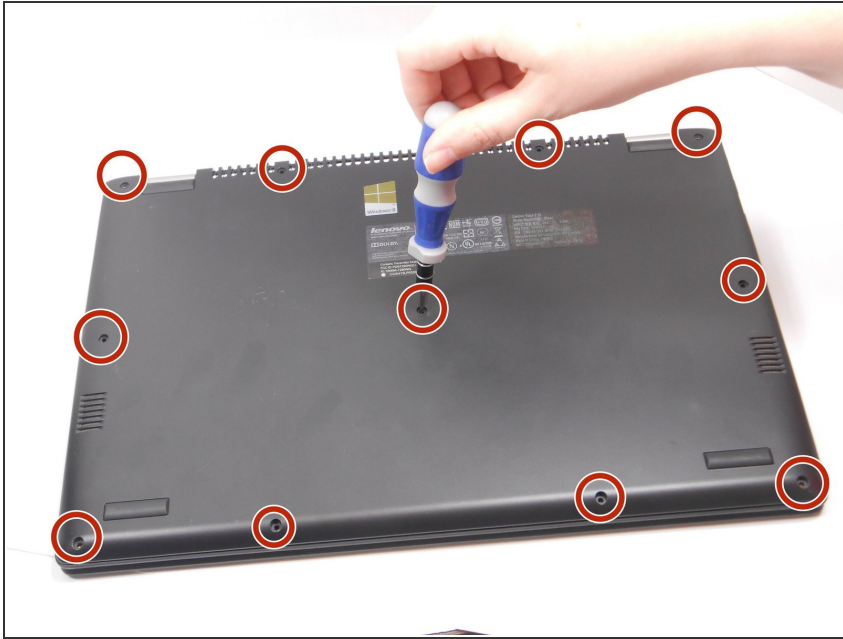
This guide explains to how safely locate and remove the battery from your Lenovo Yoga 2 13". It provides a list of the tools required, as well as the easiest way to remove the battery without causing damage.



TOOLS:

- [Magnetic Project Mat](#) (1)
 - [T5 Torx Screwdriver](#) (1)
 - [Phillips #0 Screwdriver](#) (1)
-

Step 1 — Back Panel



- With a T5 Torx screwdriver, remove eleven 6.35 mm screws from the back of the laptop.

Step 2



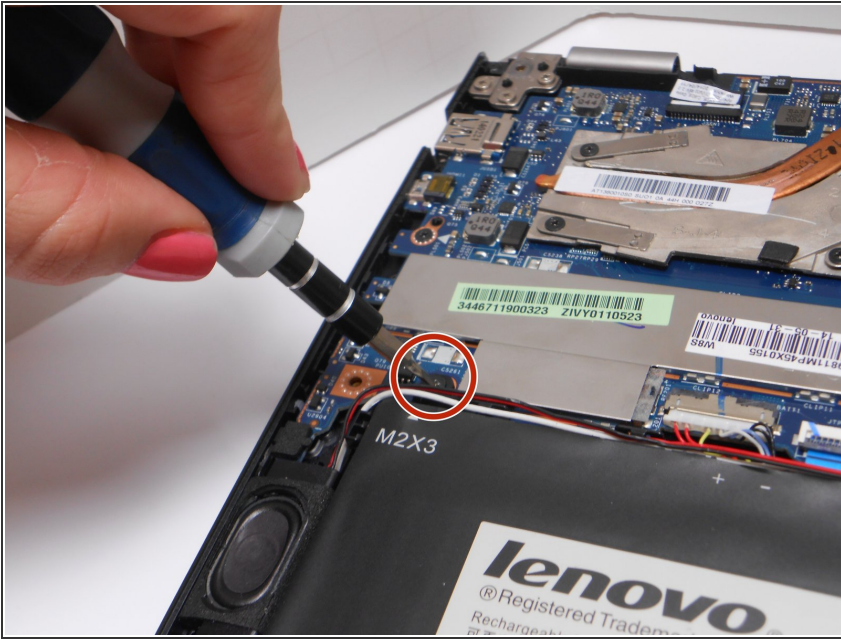
- Carefully separate back panel from the laptop.

Step 3 — Battery



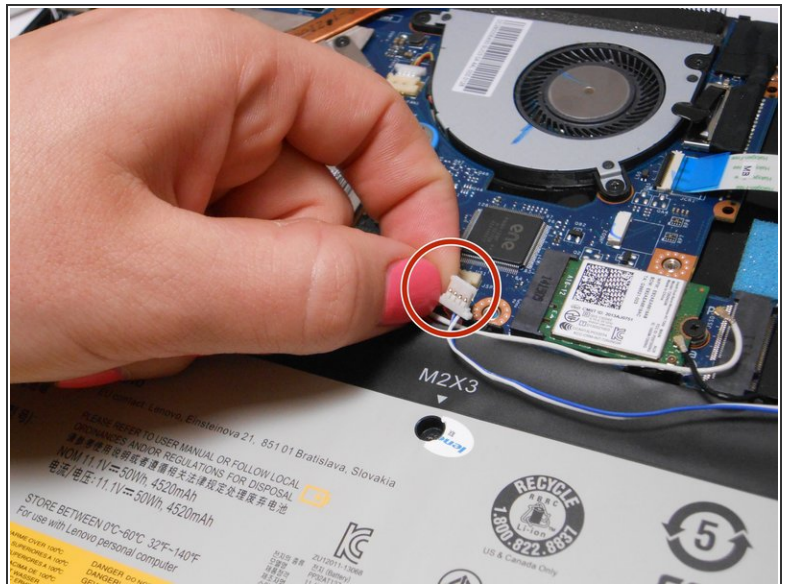
- Locate the battery of the laptop.

Step 4



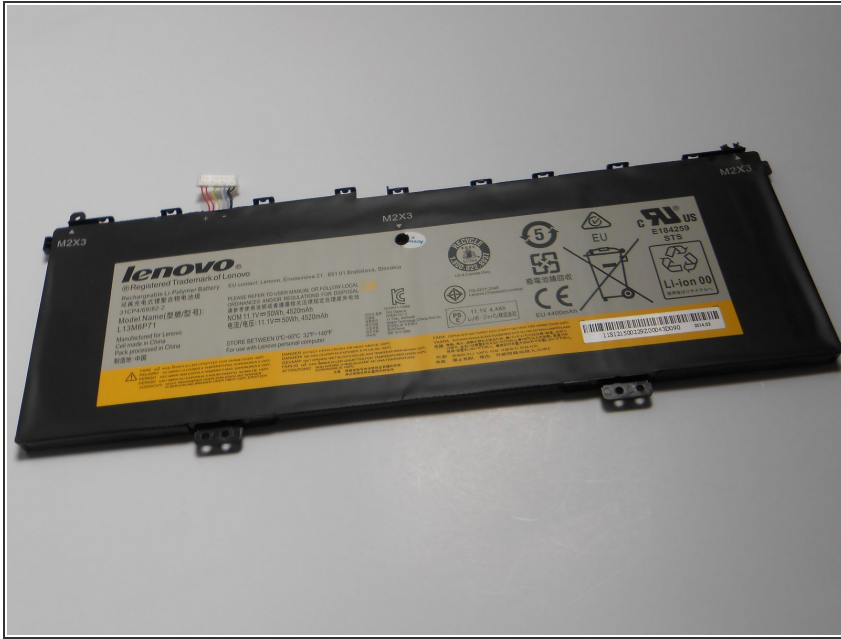
- To remove the battery, use a Phillips head screwdriver to unscrew three 3.175 mm screws. One will be in the center of the battery (covered by a Lenovo sticker) and the other two are in the corners.

Step 5



- There will also be two clips that attach the battery to the rest of the laptop. Unclip the two clips from their holdings to completely free the battery.

Step 6



- Once all wires are unattached to the rest of the computer, remove the battery from the laptop and replace.

To reassemble your device, follow these instructions in reverse order.