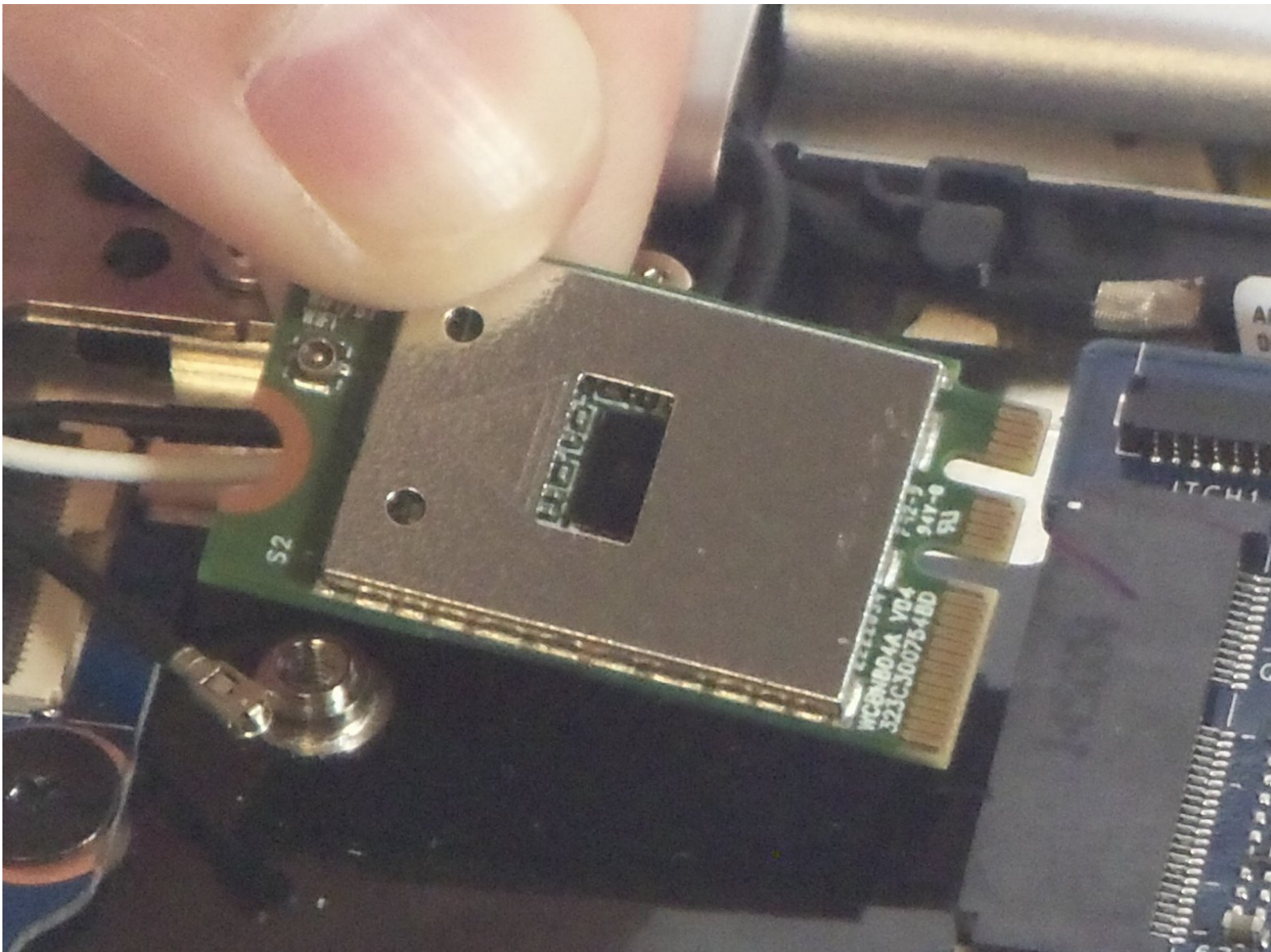




Lenovo Yoga 3 11 Wireless Card Replacement

Replace the wireless card in your Lenovo Yoga 3 11.

Written By: Geoff Wacker



INTRODUCTION

Use this guide to replace the wireless card in your Lenovo Yoga 3 11.

TOOLS:

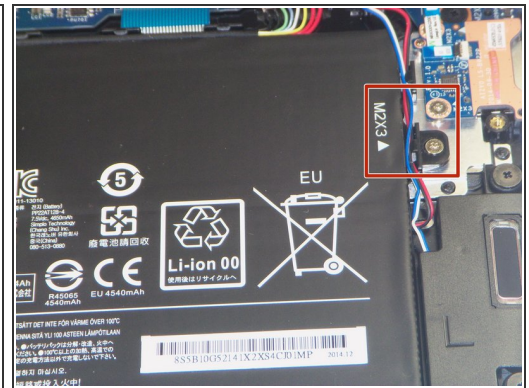
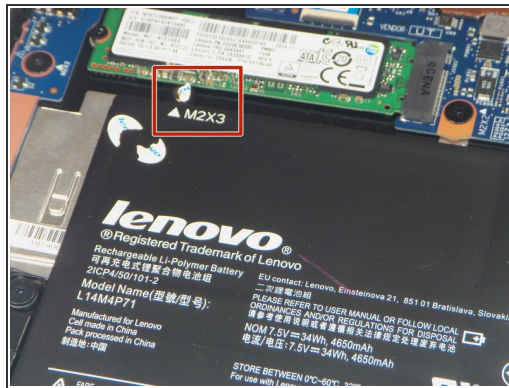
- [Phillips #00 Screwdriver](#) (1)
 - [T5 Torx Screwdriver](#) (1)
 - [Tweezers](#) (1)
 - [iFixit Opening Tools](#) (1)
-

Step 1 — Lower Case



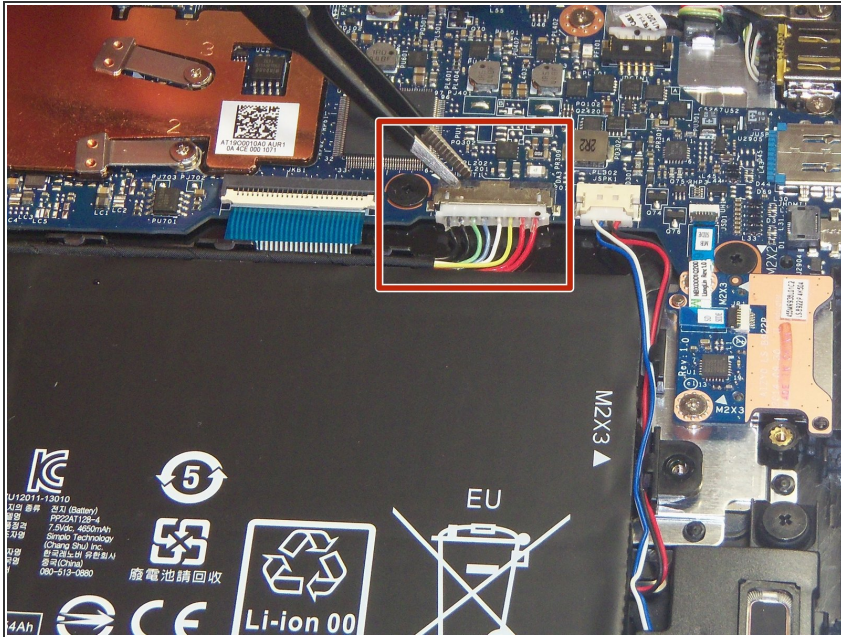
- Remove the eleven 6 mm T5 Torx screws securing the lower case.
- Gently lift the lower case up and away from the device.

Step 2 — Battery



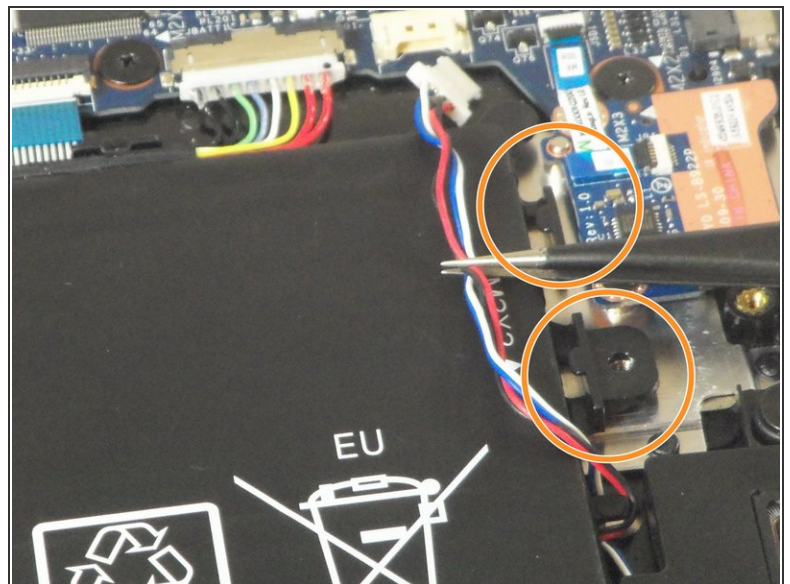
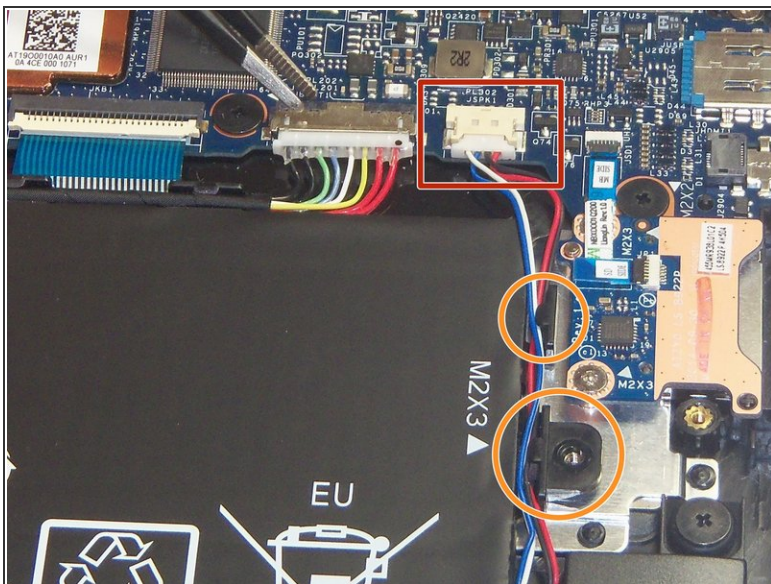
- Remove the two 3 mm Phillips #00 screws securing the battery.
- i** There are arrows on the battery indicating the location of the screws.

Step 3



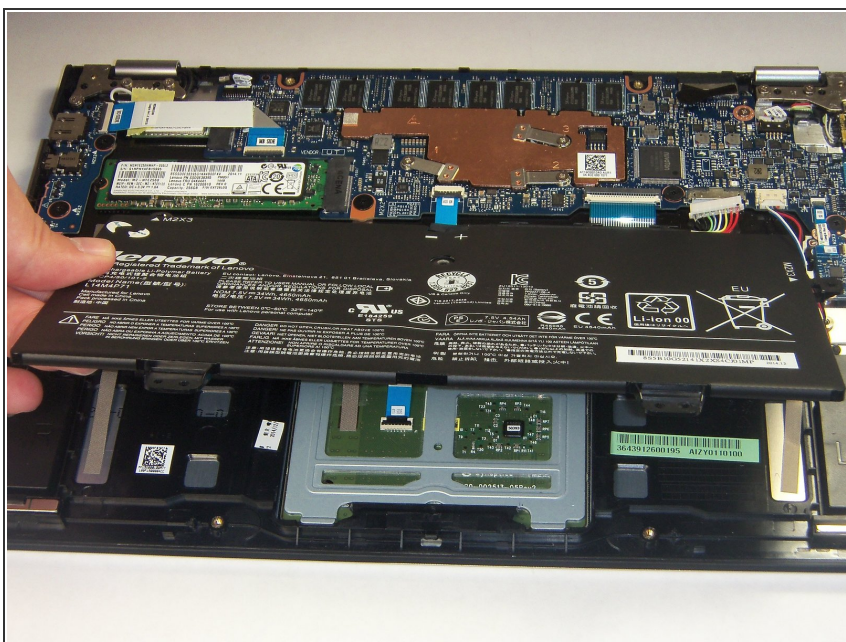
- Use a pair of tweezers to gently disconnect the battery connector.

Step 4



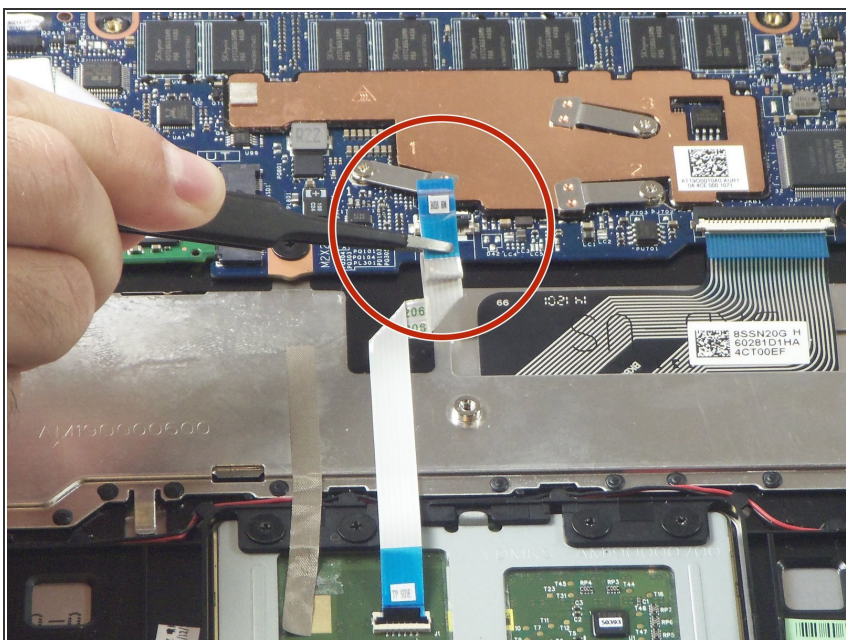
- Use a pair of tweezers to gently disconnect the speaker cable.
- Remove the wires from underneath the battery tabs using the tweezers.

Step 5



- Carefully remove the battery from the device.

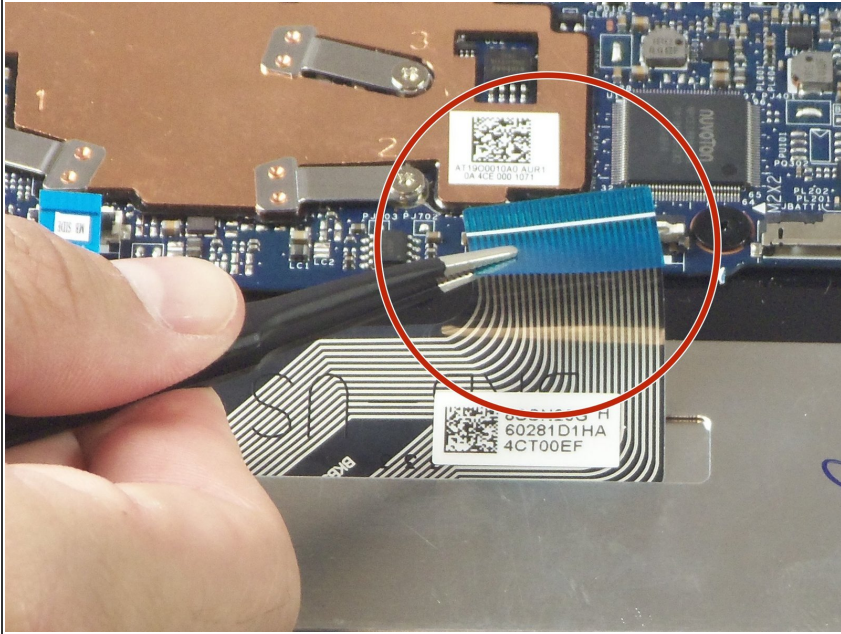
Step 6 — Wireless Card



- Use a pair of tweezers to disconnect the motherboard-size of the trackpad ribbon cable. Gently lift up

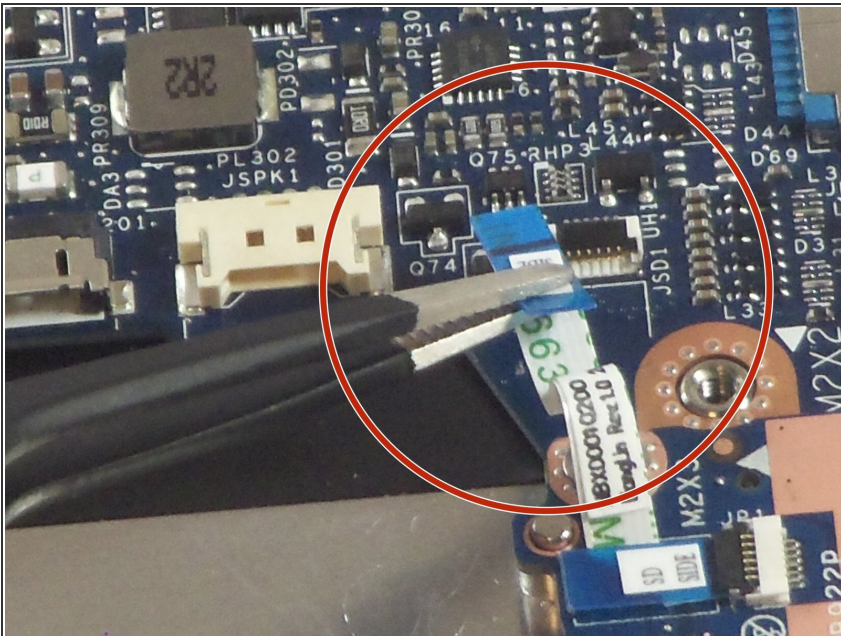
the black tab, and the cable should come free from the ZIF connector.

Step 7



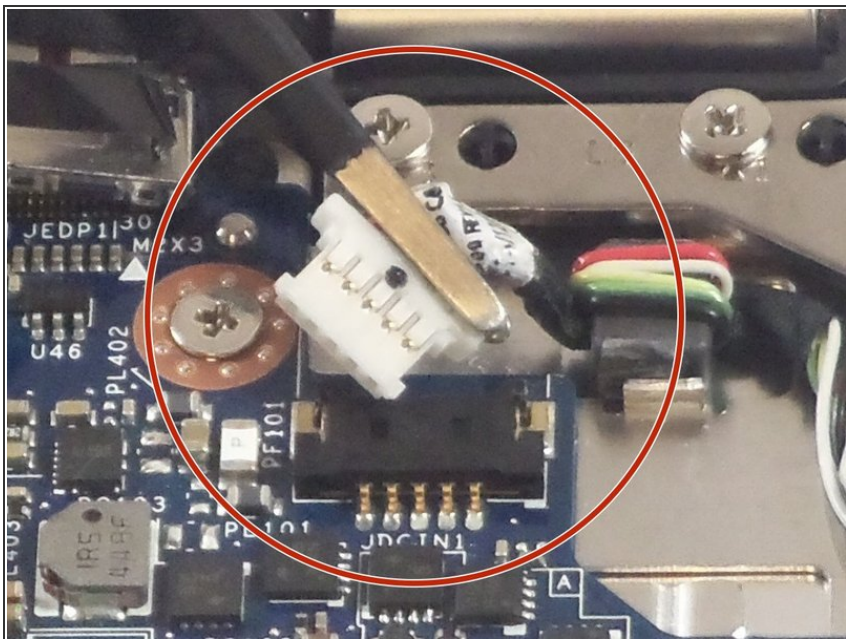
- Use a pair of tweezers to disconnect the keyboard ribbon cable from the motherboard ZIF connector. Gently lift up the white tab, and the cable should come free.

Step 8



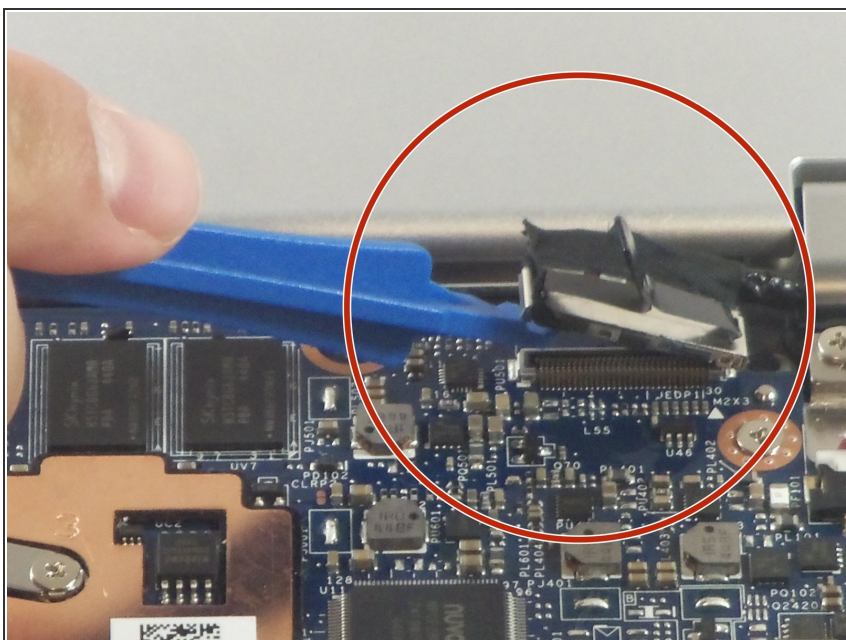
- Use a pair of tweezers to disconnect the motherboard-side of the SD board ribbon cable. Gently lift up the black tab, and then ribbon cable should come free from the ZIF connector.

Step 9



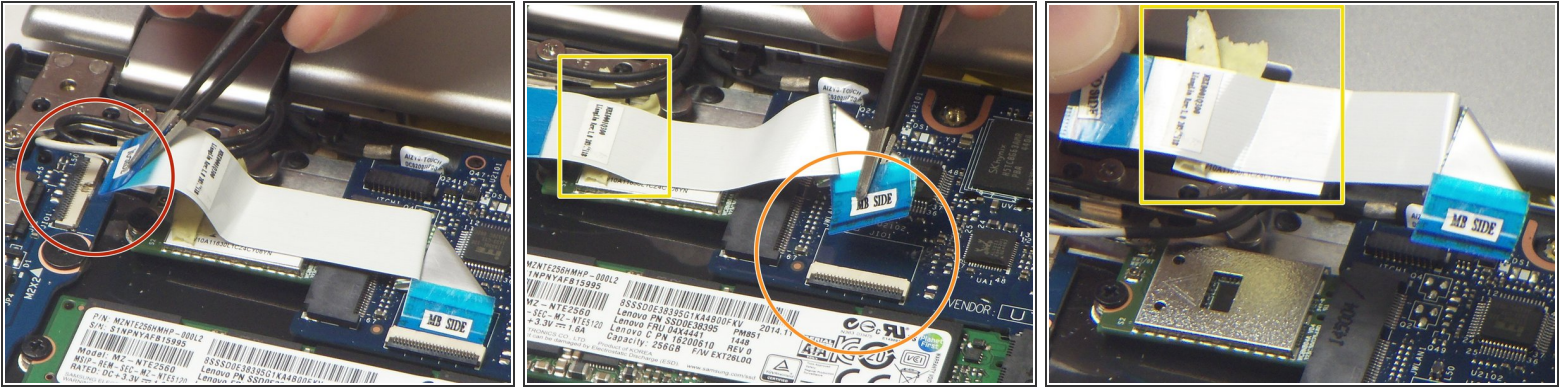
- Use the tweezers to unplug the USB port from the motherboard by gently lifting the white connector up from the black motherboard connector.

Step 10



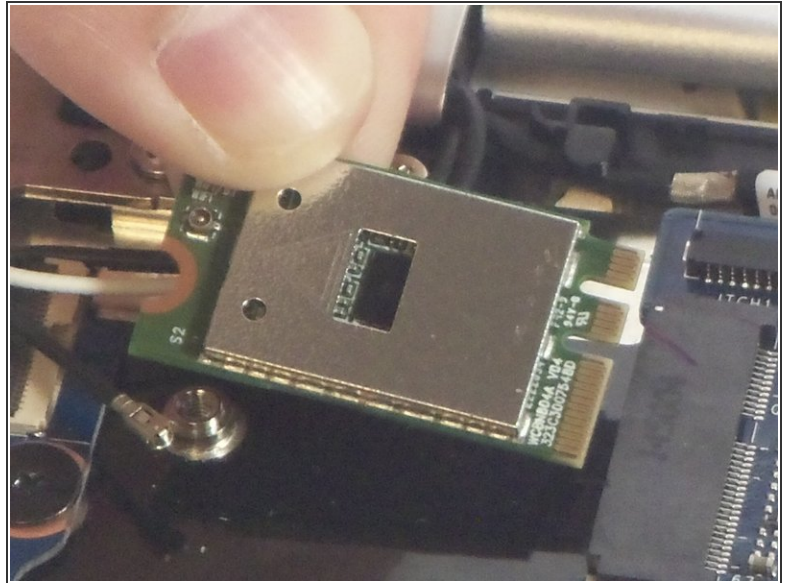
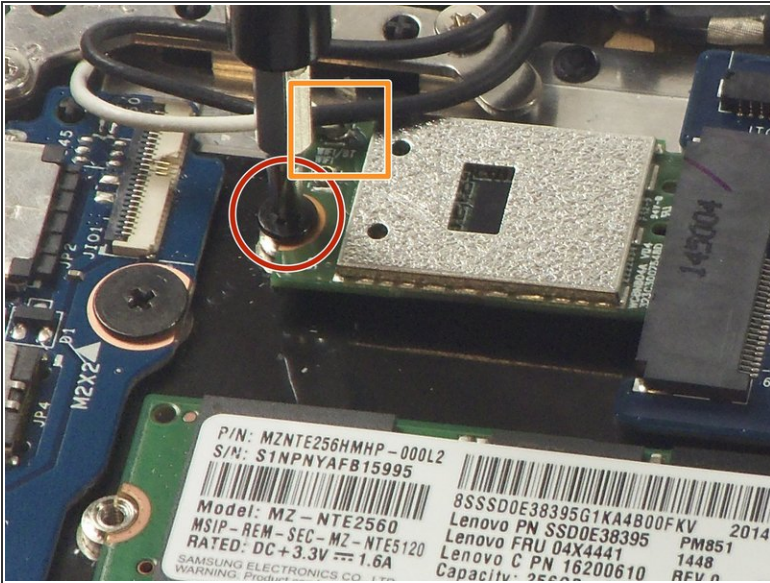
- Use a plastic opening tool to gently pry up the screen cable from the motherboard.

Step 11



- Use a pair of tweezers to disconnect the "I/O Side" of the ribbon cable connecting the audio jack/USB port assembly to the motherboard. Gently lift up the black tab, and the ribbon cable should come free from the ZIF connector.
- Use a pair of tweezers to disconnect the "MB Side" of the ribbon cable connecting the audio jack/USB port assembly to the motherboard. Gently lift up the black tab, and the ribbon cable should come free from the ZIF connector.
- Remove the ribbon cable from the device.

Step 12



- Remove the single 2 mm Phillips #00 screws securing the wireless card.
- Use a pair of tweezers to disconnect the black and white antenna cables that are connected to the wireless card.
- Gently lift the wireless card up and out of the device.

To reassemble your device, follow these instructions in reverse order.