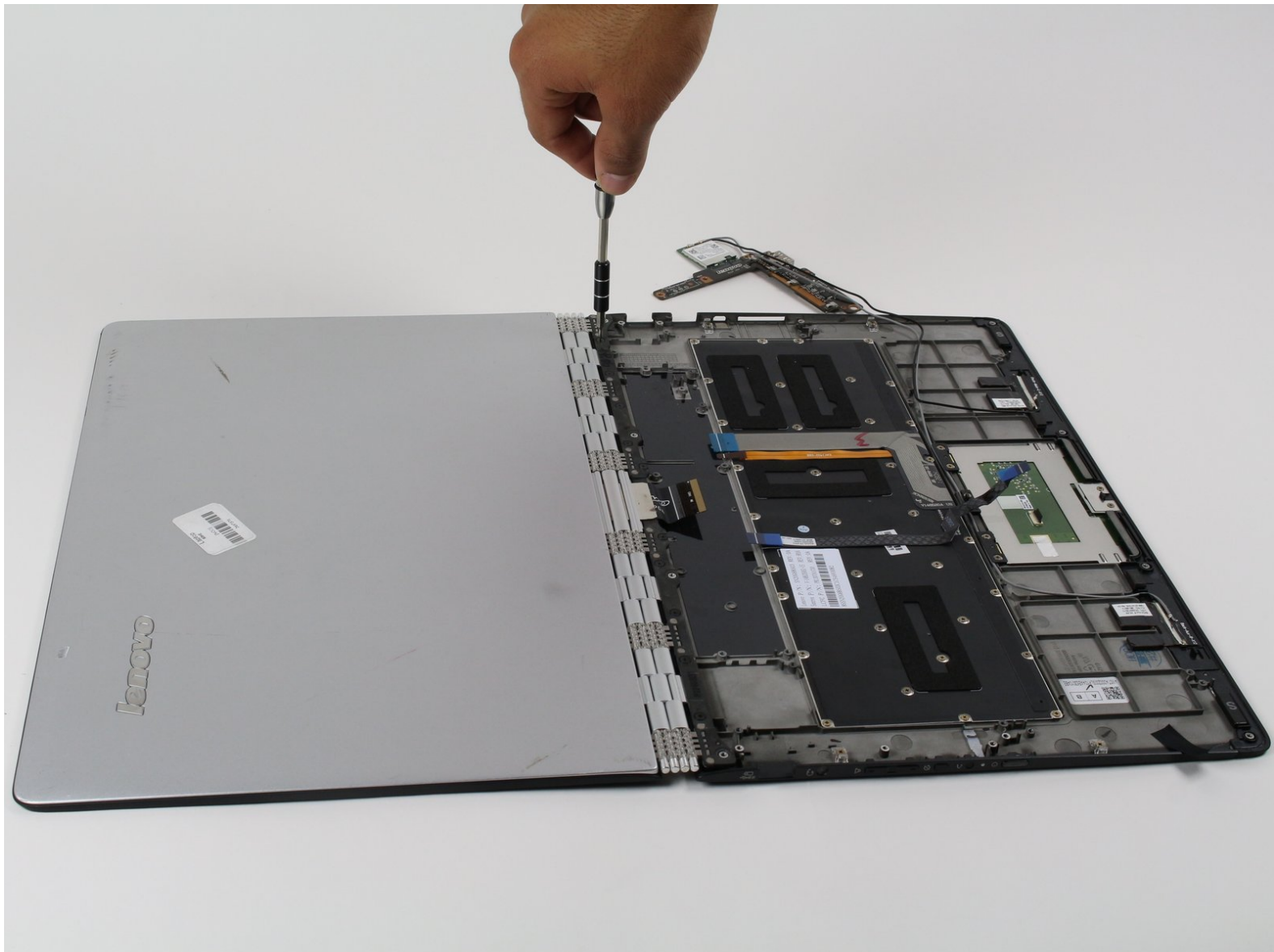




Lenovo Yoga 3 Pro Display Assembly Replacement

This will show you how to replace your cracked or dysfunctional display assembly.

Written By: Federico LopezCasildo Jr



INTRODUCTION

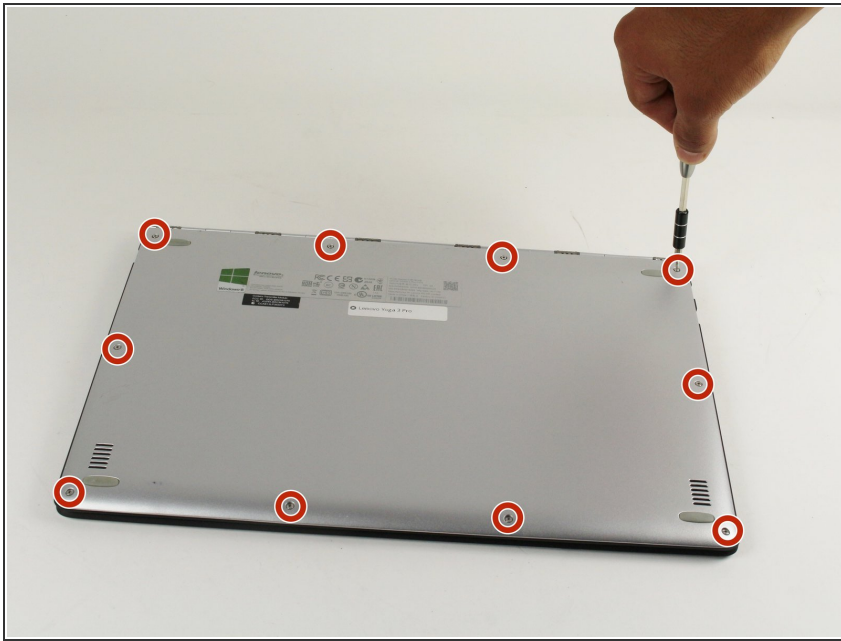
This guide will outline the proper procedure for removal of the display assembly. Exercise caution while removing and handling the assembly and its components, as they can easily scratch. Remember to turn the laptop off prior to starting.




TOOLS:

- [Metal Spudger](#) (1)
 - [T5 Torx Screwdriver](#) (1)
 - [Phillips #00 Screwdriver](#) (1)
 - [iFixit Opening Tools](#) (1)
-

Step 1 — Battery




 Before opening your laptop, make sure it is powered off.

- Remove the ten 3.3 mm screws from the base cover using a T5 Torx screwdriver.

Step 2



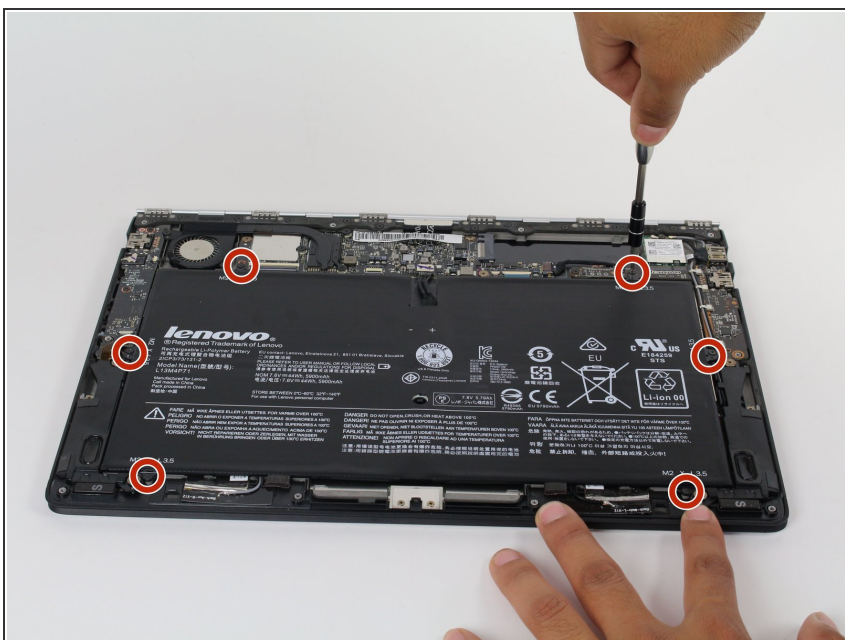
- Slide the plastic opening tool between the base cover and the frame to pry open the computer.
- Slowly go around the entire perimeter of the computer until all edges are loose.
-  Make sure the plastic opening tool doesn't go too far into the device.

Step 3



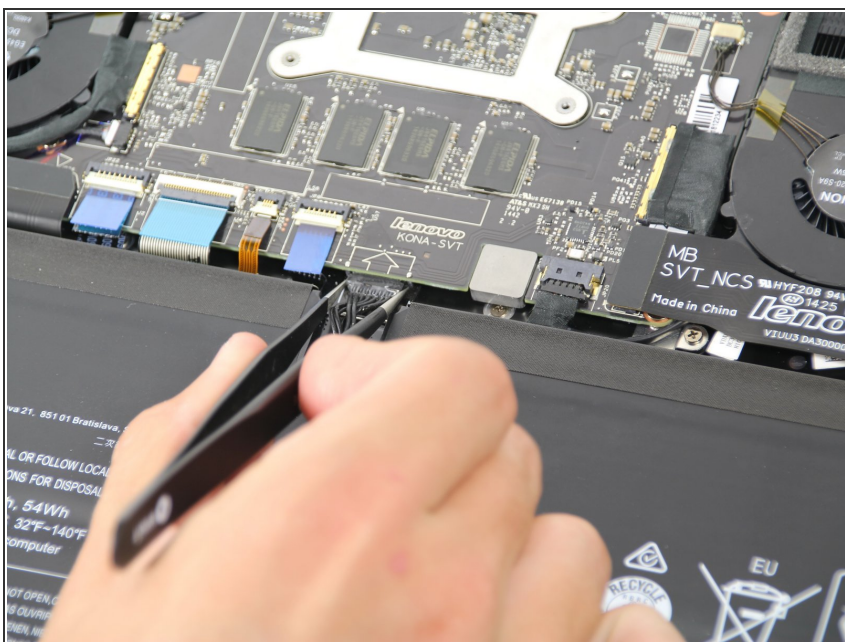
- Remove the panel and place it in a safe location.

Step 4



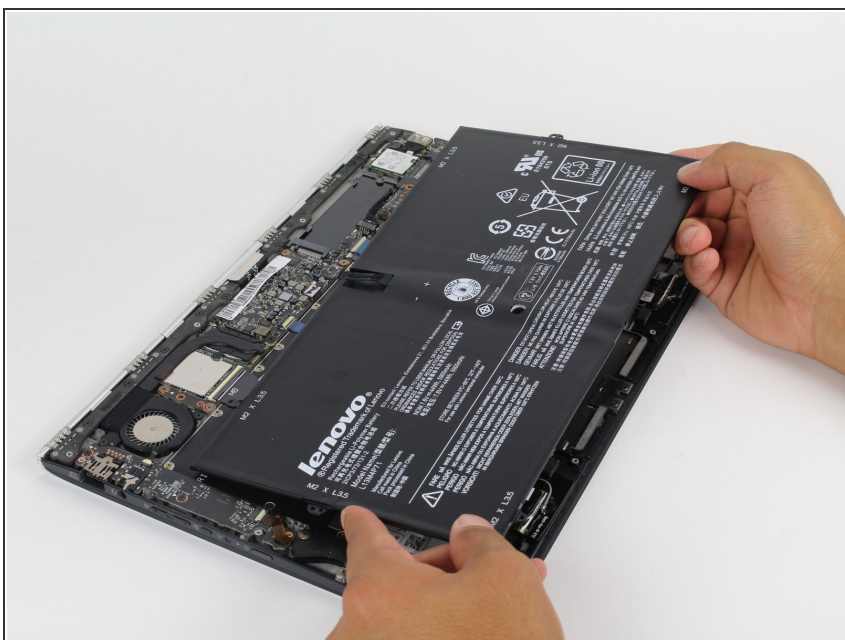
- Remove the six 3.5 mm screws surrounding the battery using a Phillips 00 screwdriver.

Step 5



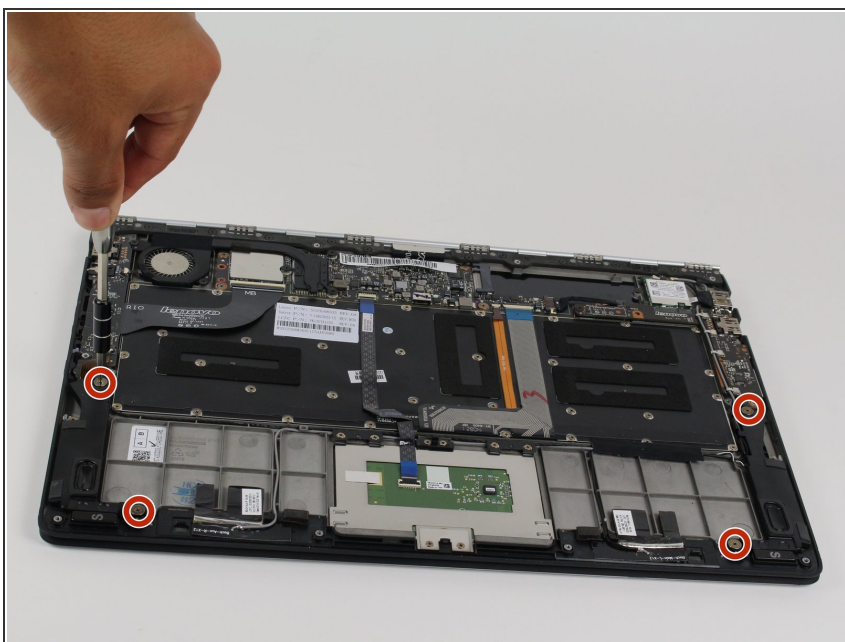
- Using either tweezers or your fingers, disconnect the black battery cable by pinching either side of the connector and pulling towards the battery.

Step 6



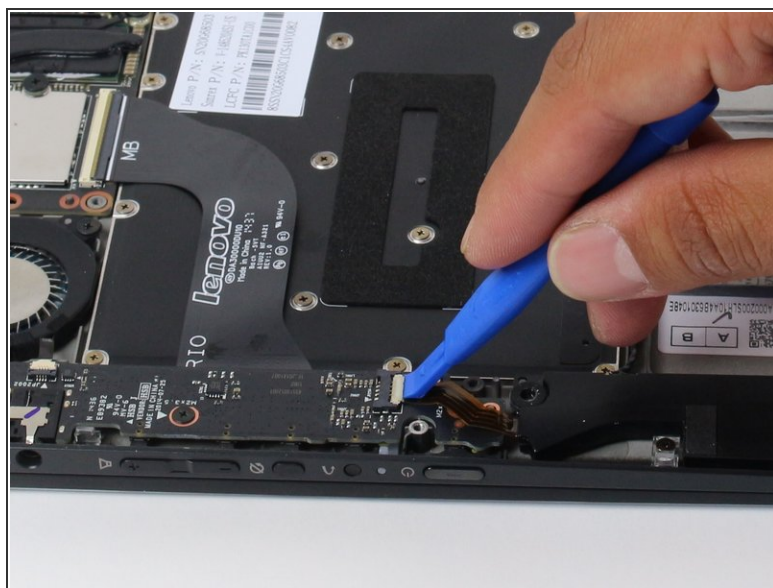
- Carefully lift and remove the battery.

Step 7 — Speakers



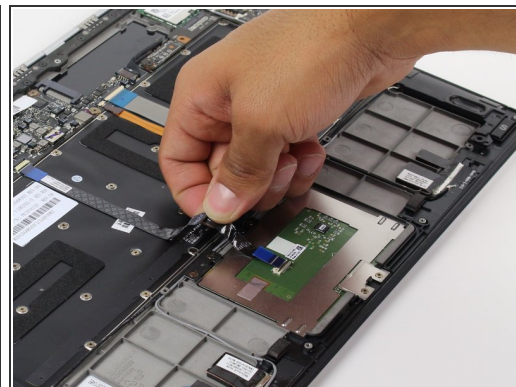
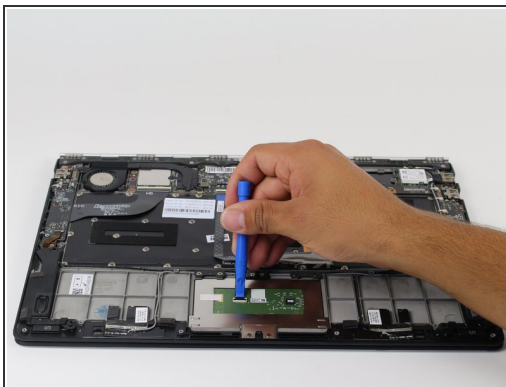
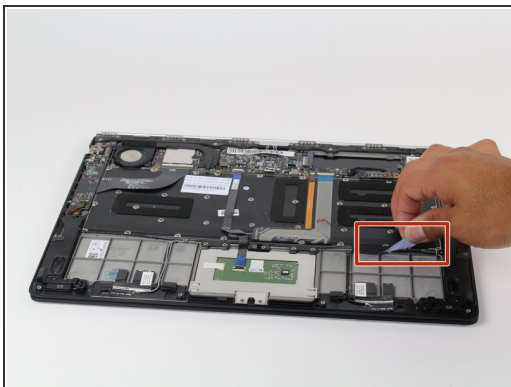
- Remove the four 4 mm screws using the Phillips 00 screwdriver.

Step 8



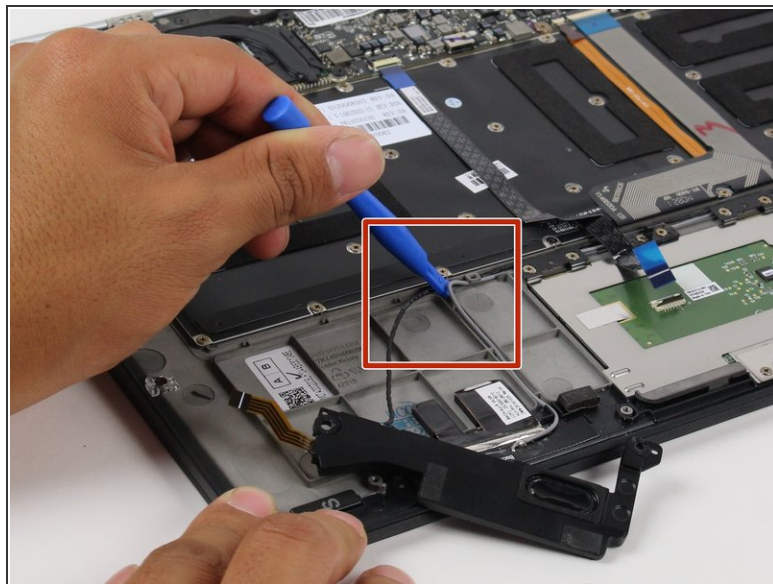
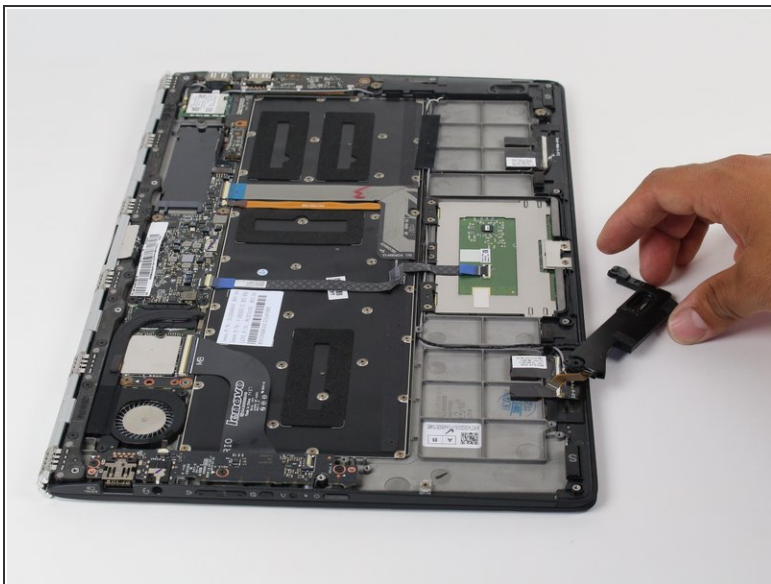
- Using the plastic opening tool, flip open tab as shown.

Step 9



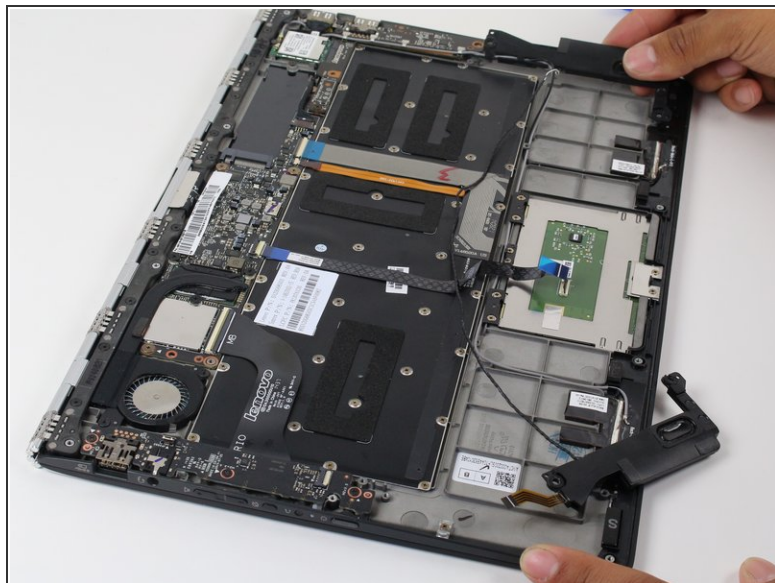
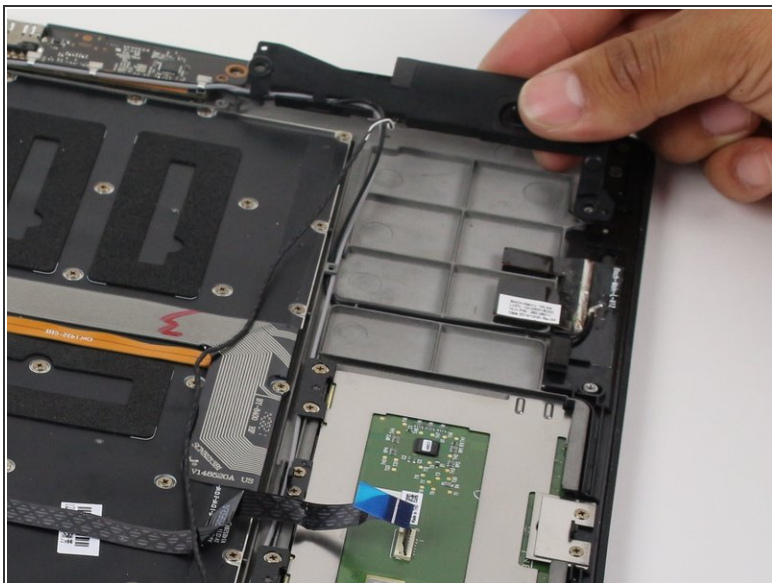
- Remove the adhesive tape.
- Flip open the ribbon connecting tab.
- ⓘ Carefully lift the ribbon connector from its adhesive.

Step 10



- Remove the speaker and set it on the side.
- Use the plastic opening tool to remove the cables.
- ⓘ Be careful of other cables.

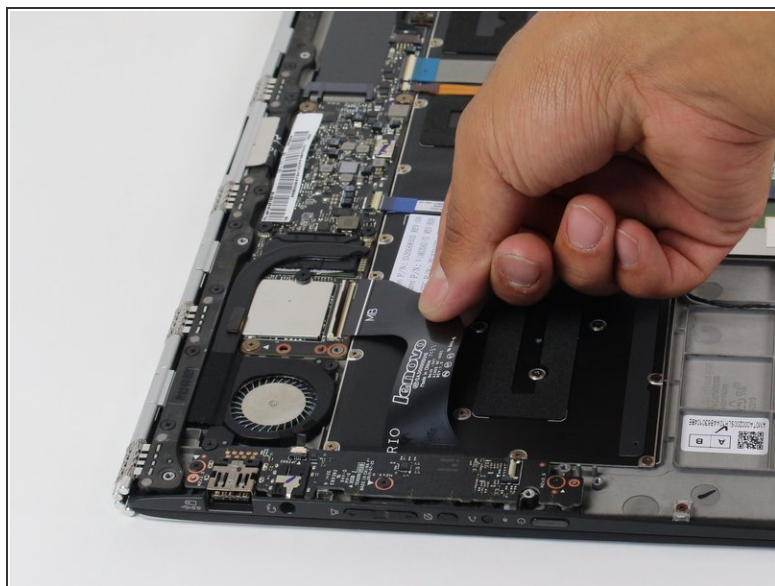
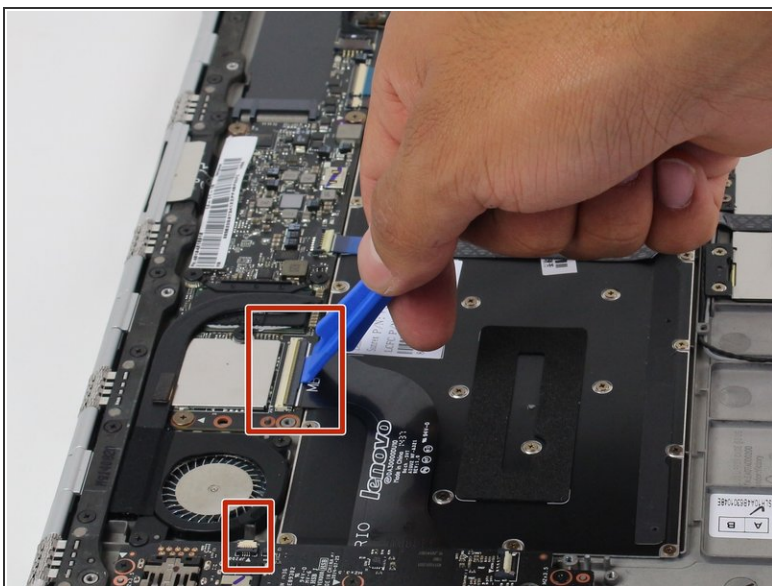
Step 11



- Removing the other speaker by unwinding cables.

i Lift both speakers carefully.

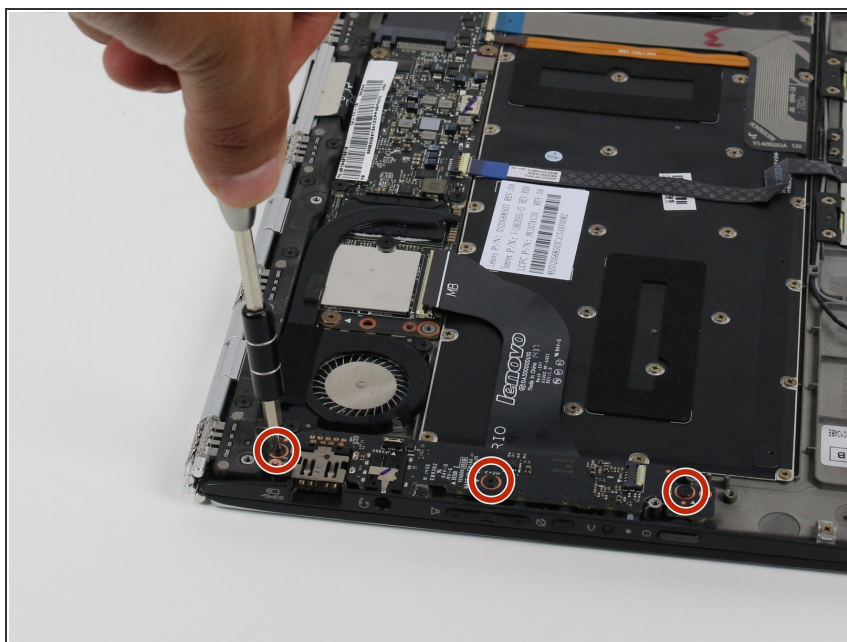
Step 12 — USB Ports



- Use the plastic opening tool to flip open the tab on each ribbon connector as shown.

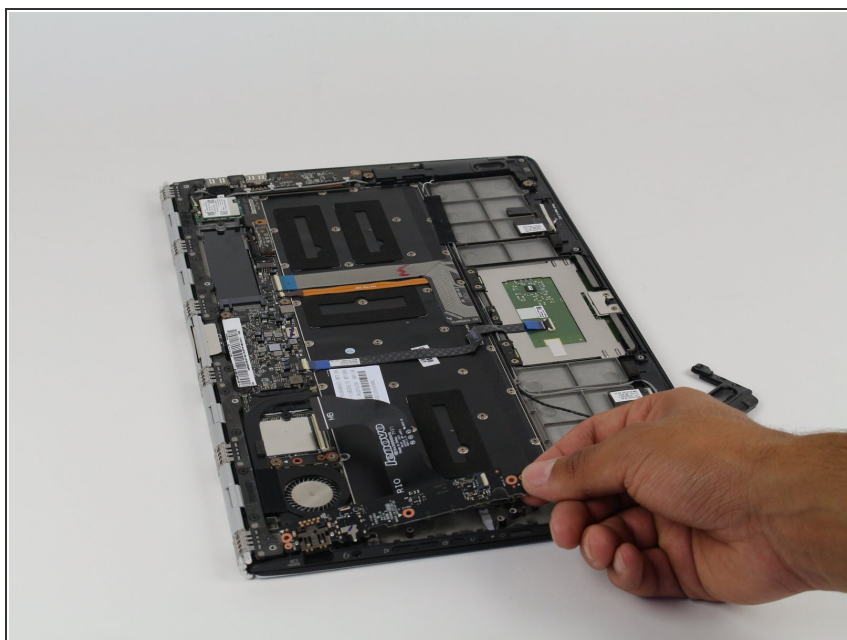
i Ribbon connectors can be fragile, so be gentle when disconnecting them.

Step 13



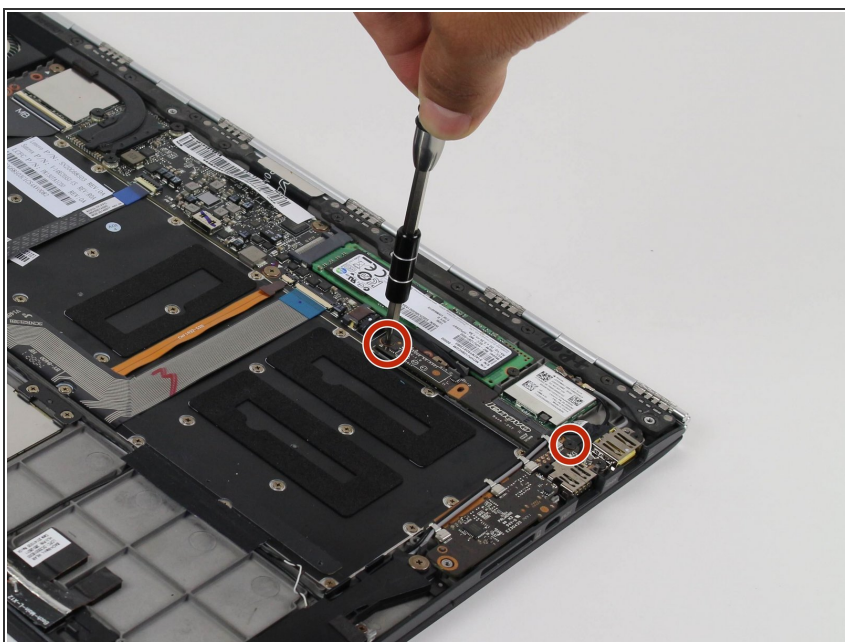
- Remove the three indicated 3.5 mm screws using the Philips 00 screwdriver.

Step 14



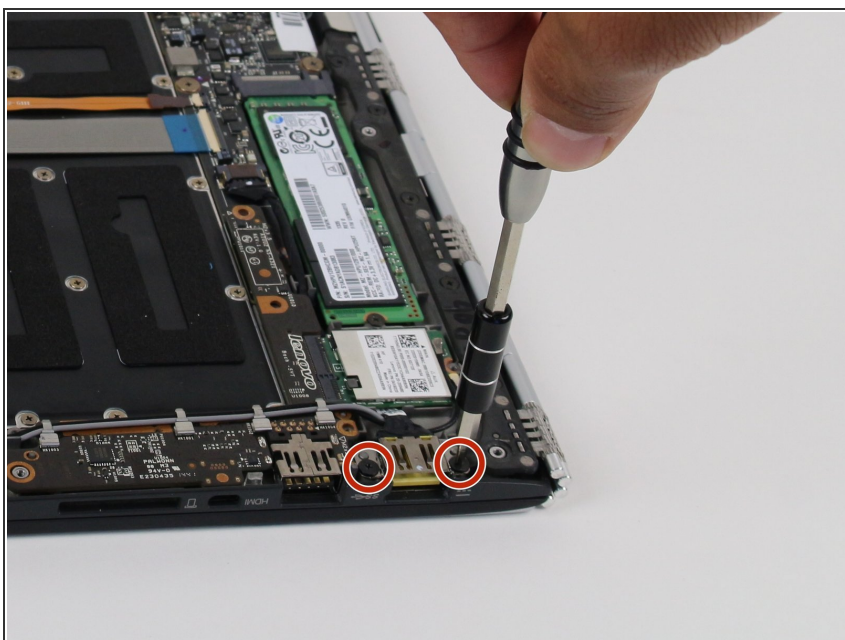
- Remove the USB assembly.
- i** If this is the side that was not working, then follow the steps backwards from here to put it back together.

Step 15



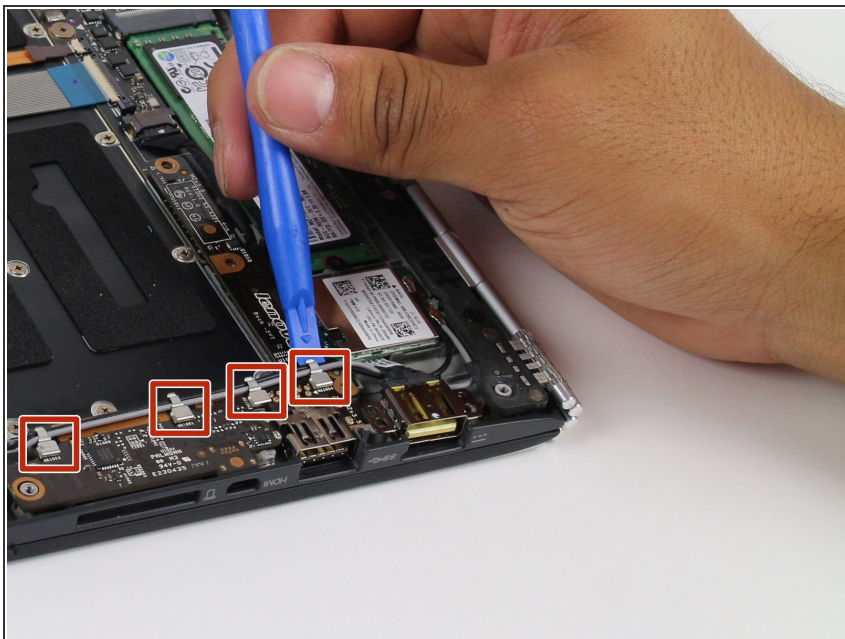
- On the other side of the laptop, remove the two 3.5 mm screws using the Philips 00 screwdriver.

Step 16



- Remove the two 2.5 mm screws using the Philips 00 screwdriver.

Step 17



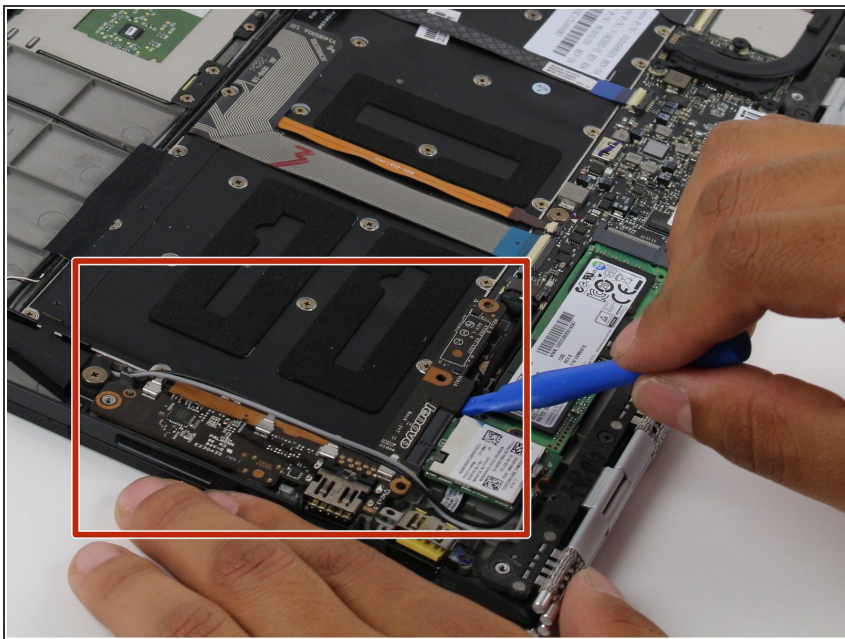
- Use the plastic opening tool to lift the metal cable holders.
- ⓘ Exercise caution. Cable holders will break if lifted too far.

Step 18



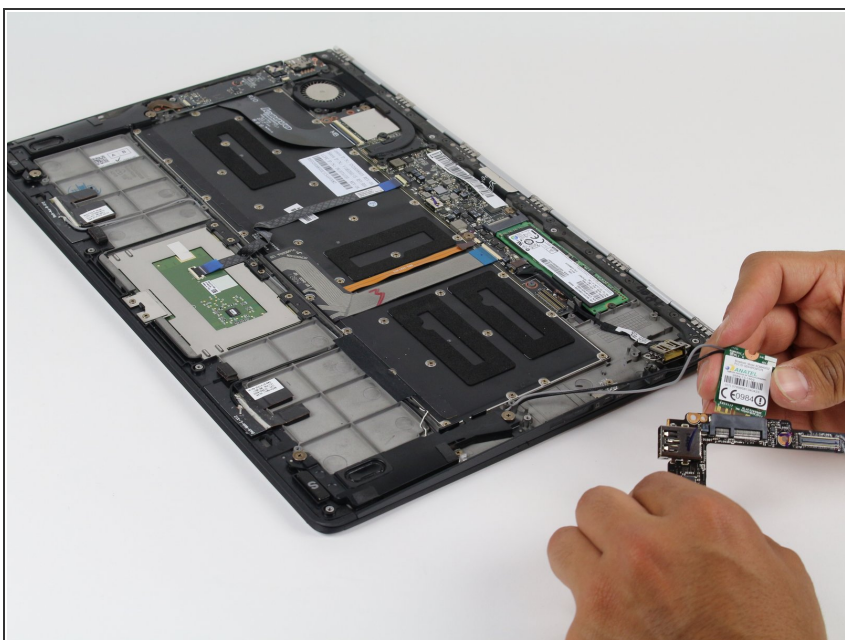
- Lift the USB port up and use the plastic opening tool to loop the wires around the USB port.

Step 19



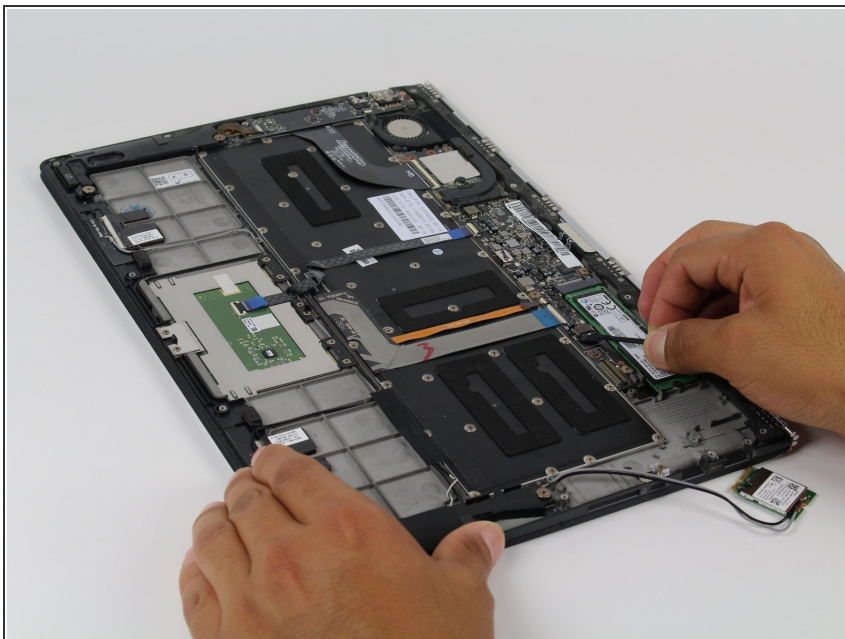
- Remove the USB assembly using the plastic opening tool.

Step 20



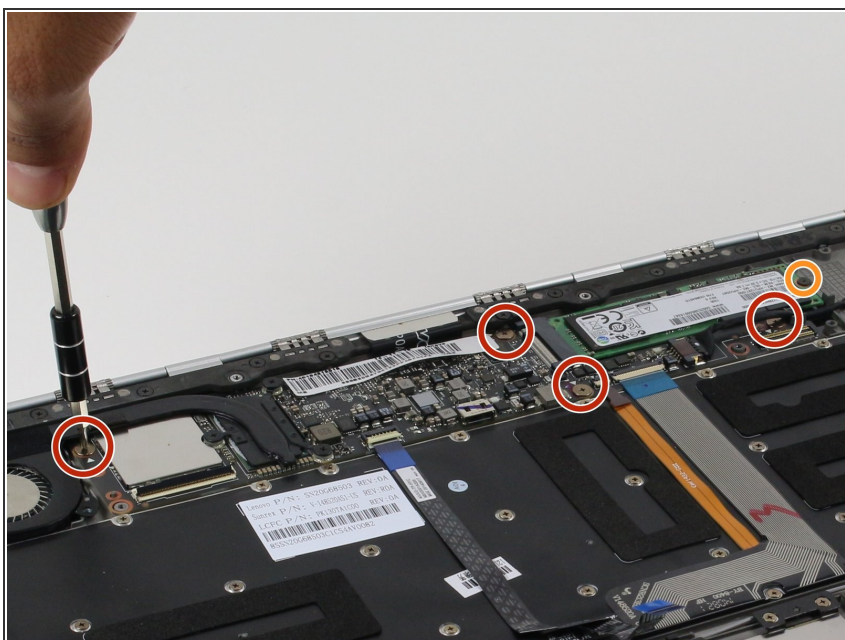
- Disconnect the WiFi card from the USB assembly.
- ⚠ Be careful with the connectors on the WiFi card as they are fragile.

Step 21



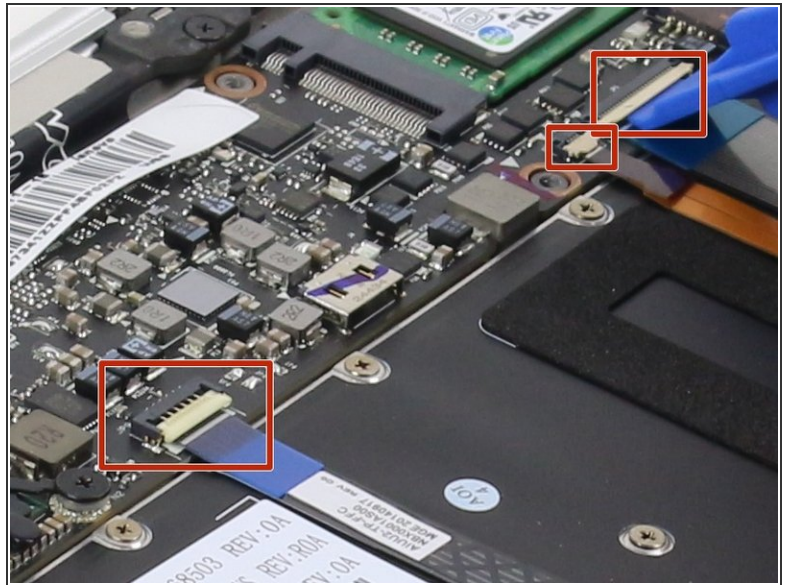
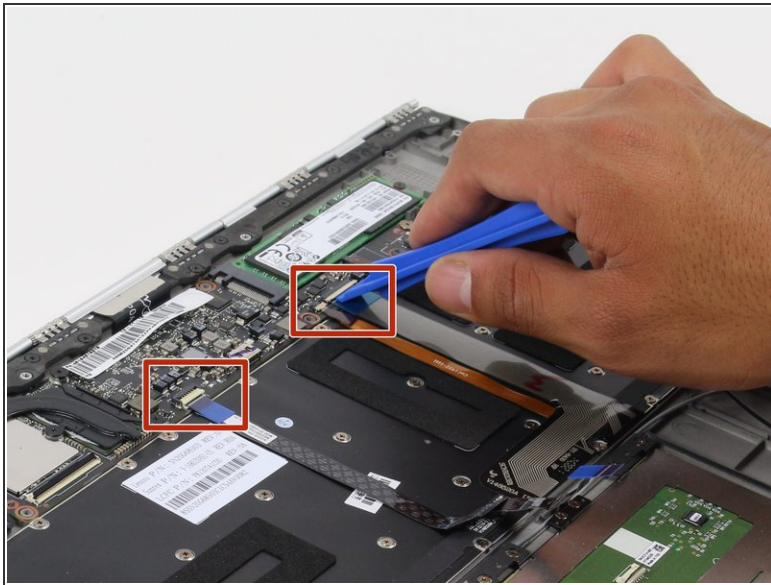
- Pull the second USB hub off.
- ⓘ Be careful when pulling out the cable.

Step 22 — Display Assembly



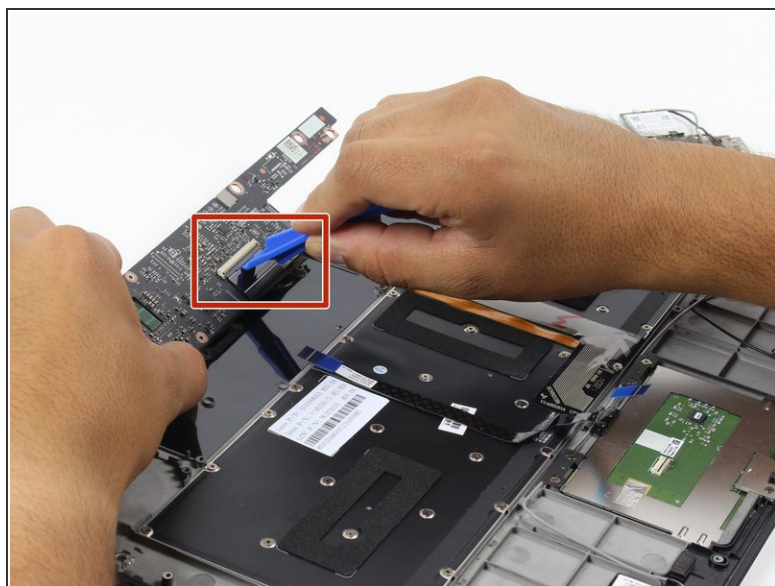
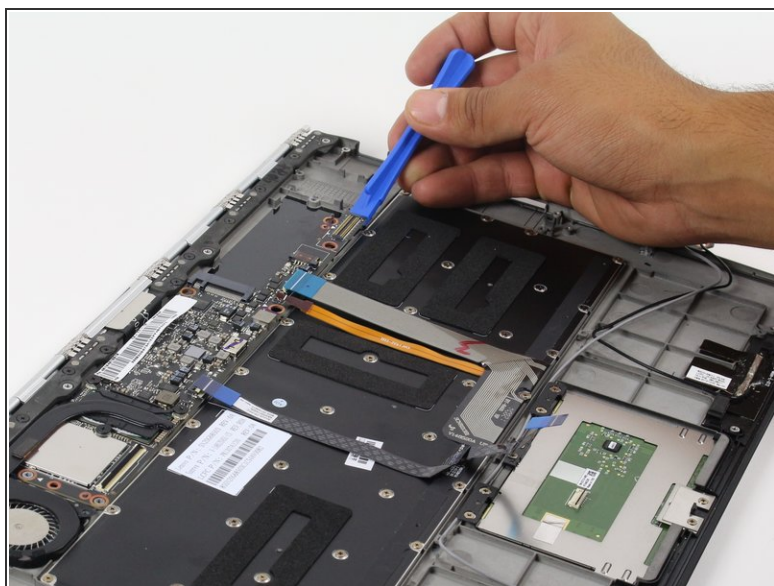
- Remove the four 2mm screws using the Philips 00 screwdriver.
- Remove the 2.5mm screw using the Philips 00 screwdriver.

Step 23



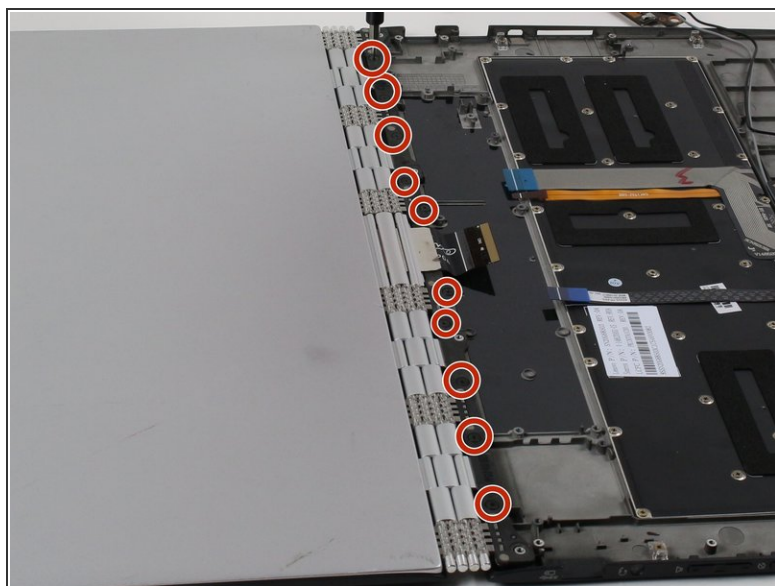
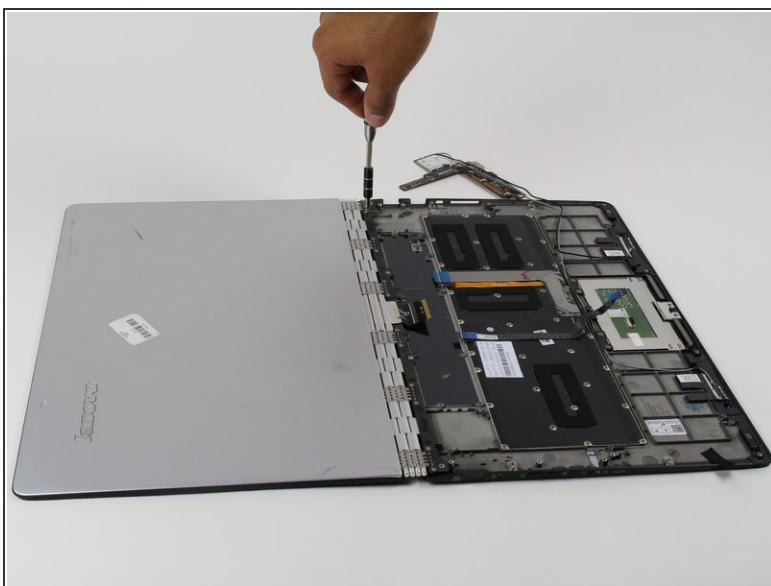
- Open the three ribbon connecting tabs.

Step 24



- Lift the board with the plastic opening tool.
- ⚠ Be careful lifting the board.
- Open the pin connector.
- ⚠ Do not lift the board completely so as not to pull the ribbon connector.

Step 25



- Remove the ten 3.5mm screws using the Philips 00 screwdriver.

i Lay the laptop as shown.

Step 26



- Use a spudger to lift the screw cover.
- i** Lift slowly and carefully. The cover is very fragile.

Step 27



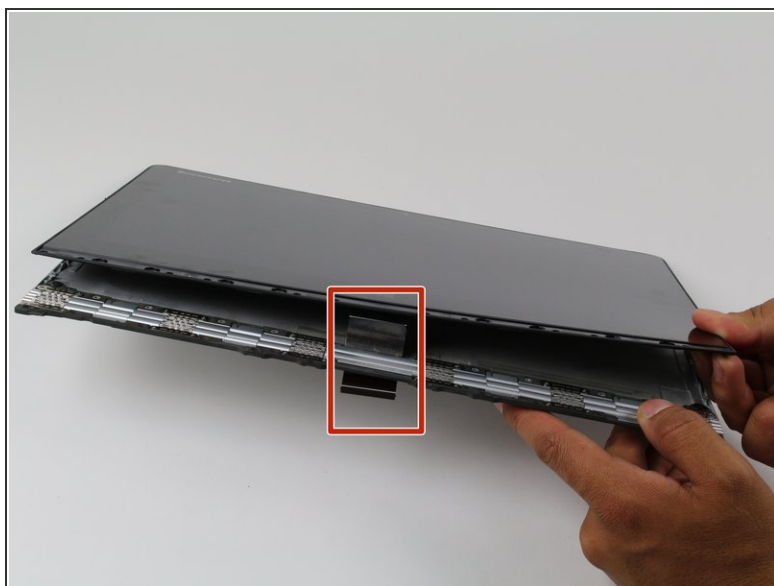
- Remove the eight 2mm screws using the Philips 00 screw driver.

Step 28




- Use the plastic opening tool to lift the screen cover from the screen assembly.
- ⓘ Do not insert the plastic opener too far in.
- ⓘ Slowly go around the perimeter of the screen to loosen all fasteners.

Step 29



- Unclip the display assembly by sliding the display down, towards the lower edge of the upper case component. The clips will disengage and you will be able to lift the assembly out easily.

 Be careful pulling off the assembly as to not rip the ribbon connector shown.

To reassemble your device, follow these instructions in reverse order.