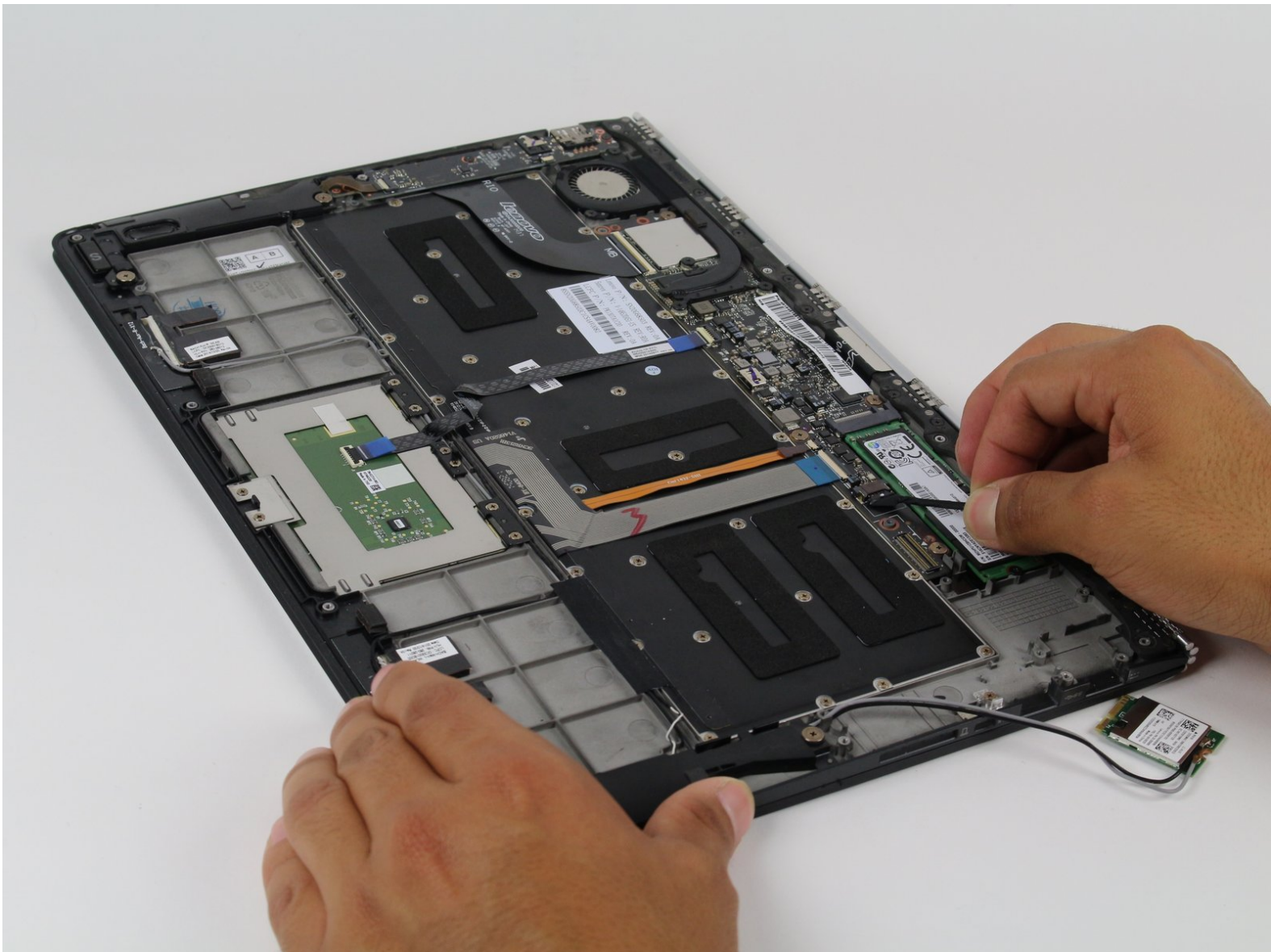




Lenovo Yoga 3 Pro USB Ports Replacement

This guide will show you how to safely remove both USB port assemblies from the Yoga 3 Pro.

Written By: Caroline Seifert



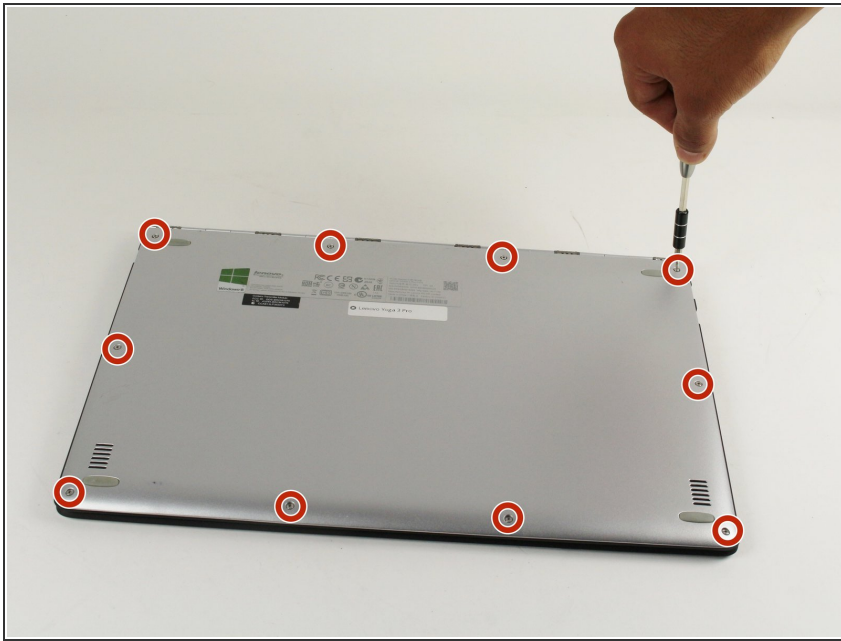
INTRODUCTION

Over time, the USB ports collect dust, dirt, and can become damaged for a multitude of reasons all of which ultimately lead to connectivity issues. This guide will help you remove the USB ports in order to clean or replace them.

TOOLS:

- [Phillips #00 Screwdriver](#) (1)
 - [T5 Torx Screwdriver](#) (1)
 - [iFixit Opening Tools](#) (1)
-

Step 1 — Battery



- ⚠ Before opening your laptop, make sure it is powered off.
- Remove the ten 3.3 mm screws from the base cover using a T5 Torx screwdriver.

Step 2



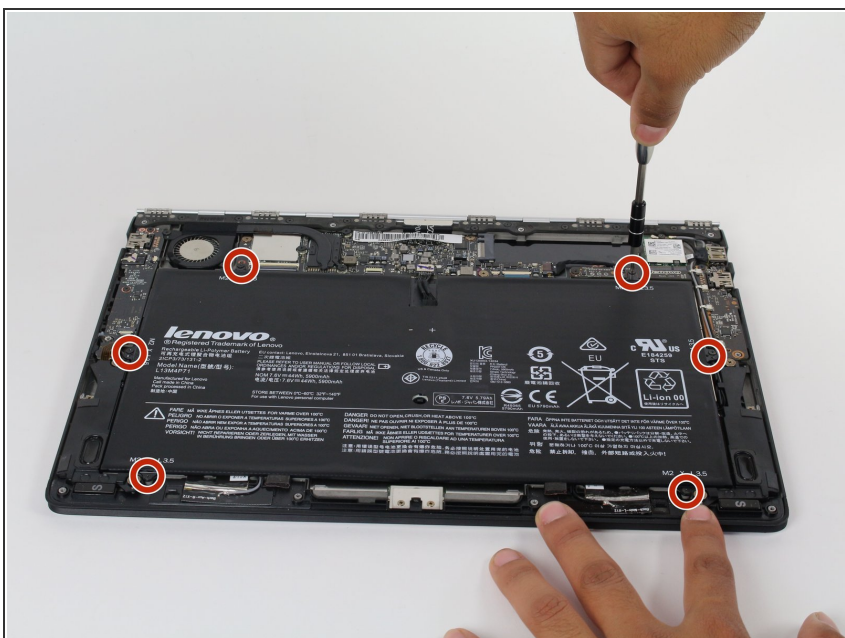
- Slide the plastic opening tool between the base cover and the frame to pry open the computer.
- Slowly go around the entire perimeter of the computer until all edges are loose.
- ⓘ Make sure the plastic opening tool doesn't go too far into the device.

Step 3



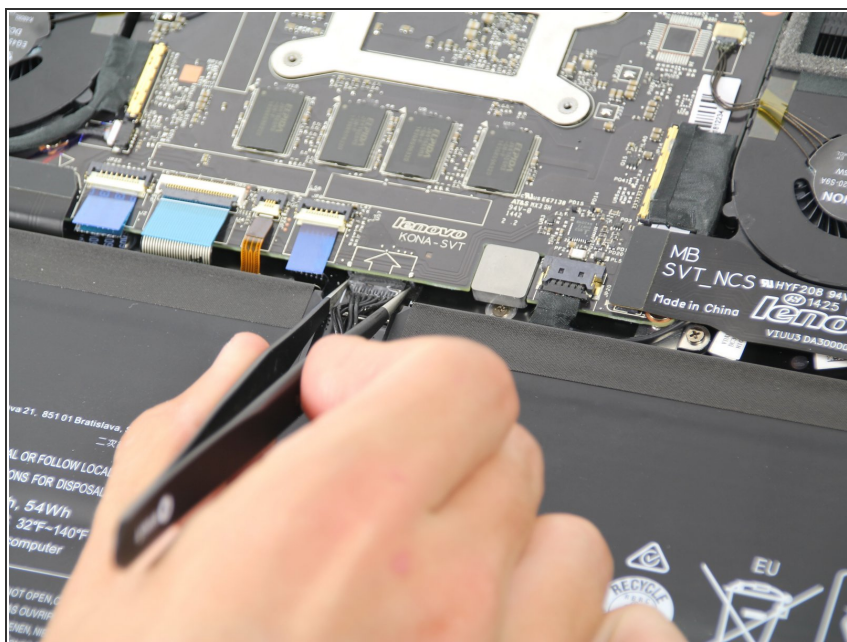
- Remove the panel and place it in a safe location.

Step 4



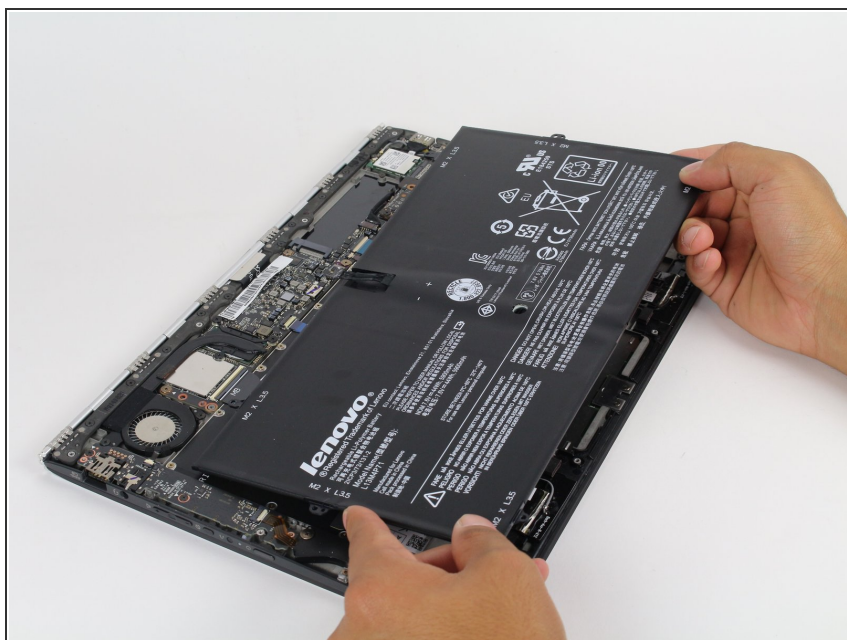
- Remove the six 3.5 mm screws surrounding the battery using a Phillips 00 screwdriver.

Step 5



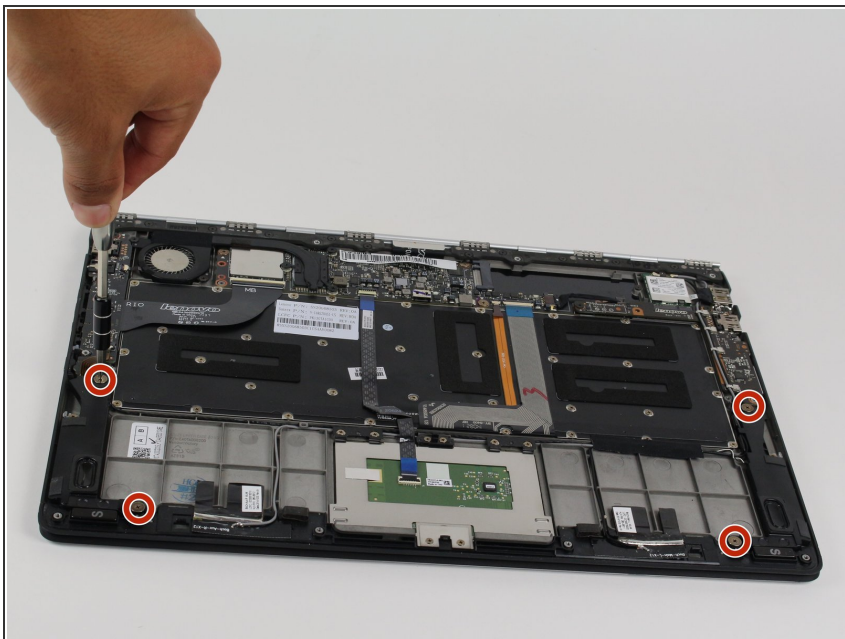
- Using either tweezers or your fingers, disconnect the black battery cable by pinching either side of the connector and pulling towards the battery.

Step 6



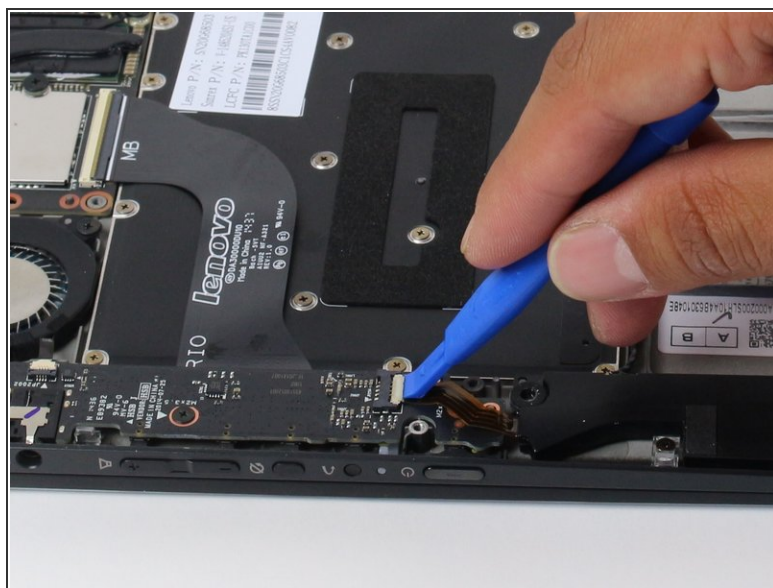
- Carefully lift and remove the battery.

Step 7 — Speakers



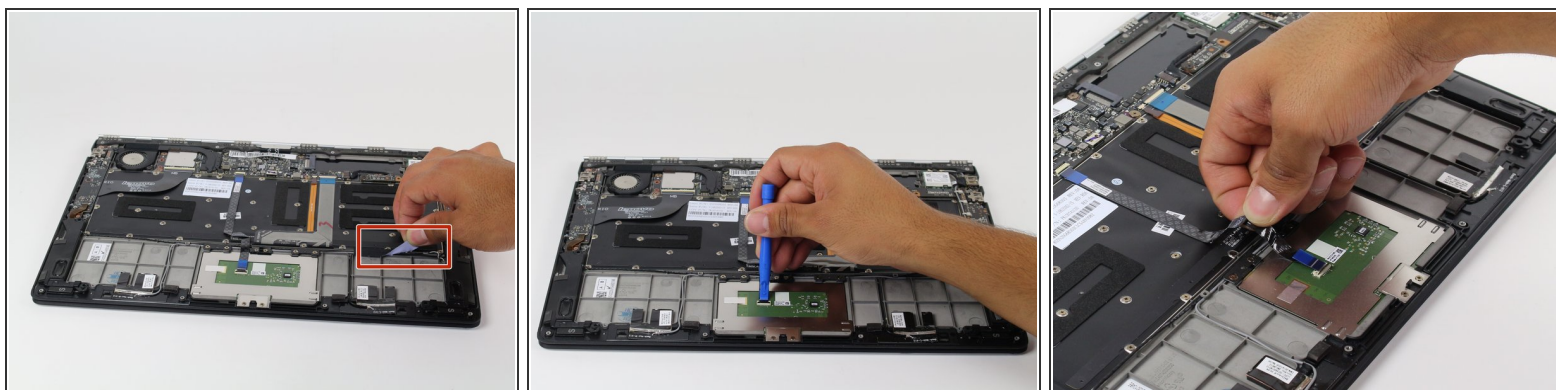
- Remove the four 4 mm screws using the Phillips 00 screwdriver.

Step 8



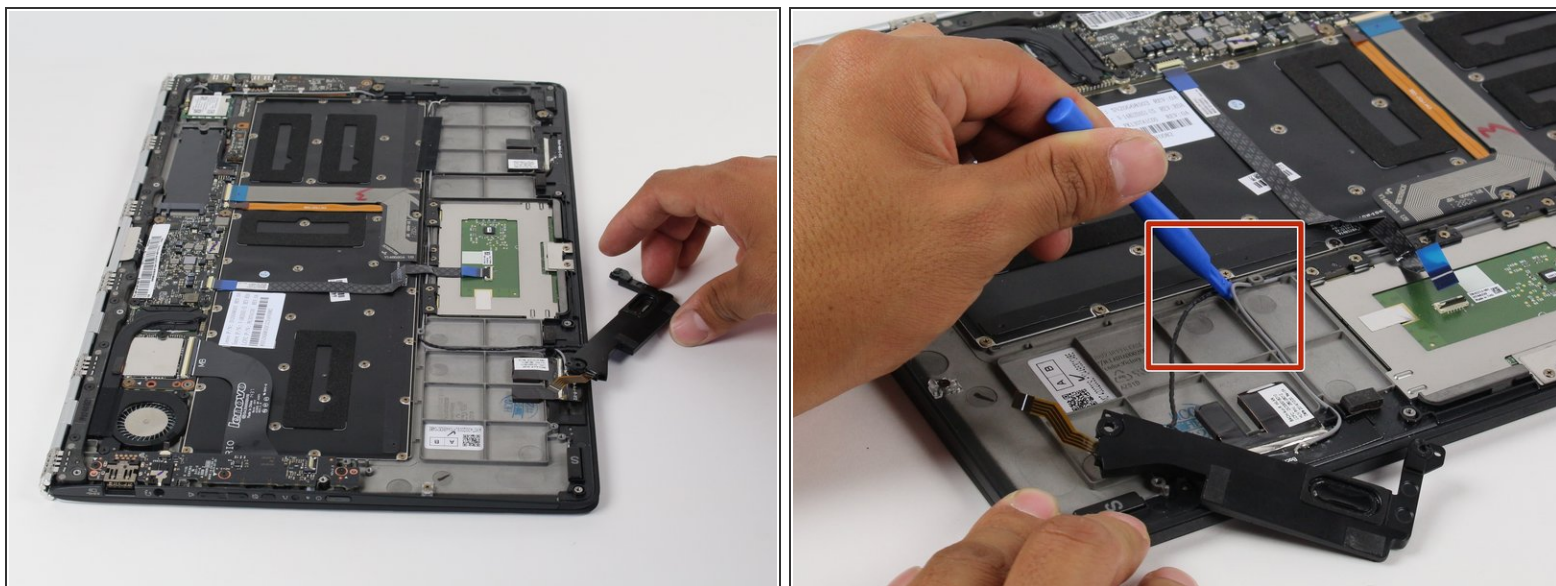
- Using the plastic opening tool, flip open tab as shown.

Step 9



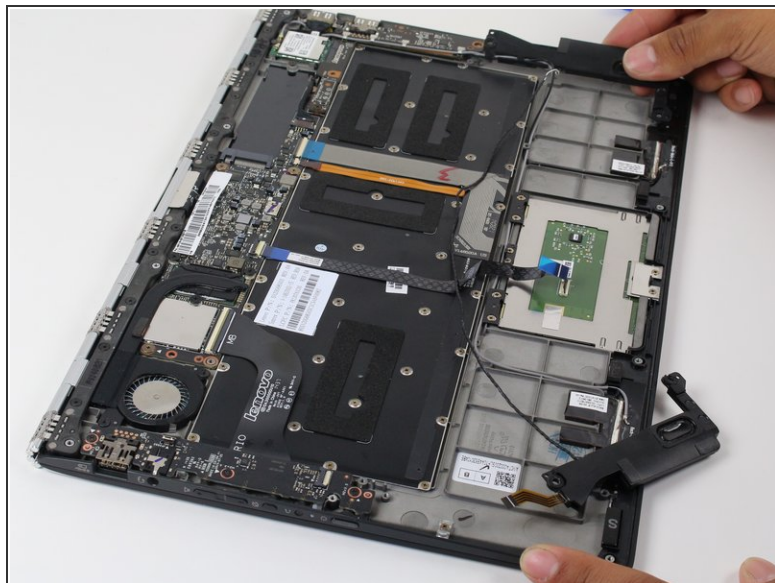
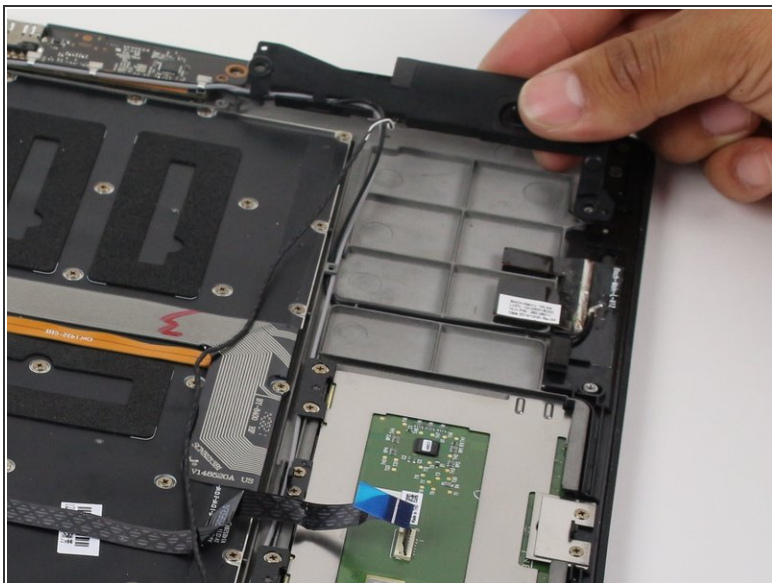
- Remove the adhesive tape.
- Flip open the ribbon connecting tab.
- ⓘ Carefully lift the ribbon connector from its adhesive.

Step 10



- Remove the speaker and set it on the side.
- Use the plastic opening tool to remove the cables.
- ⓘ Be careful of other cables.

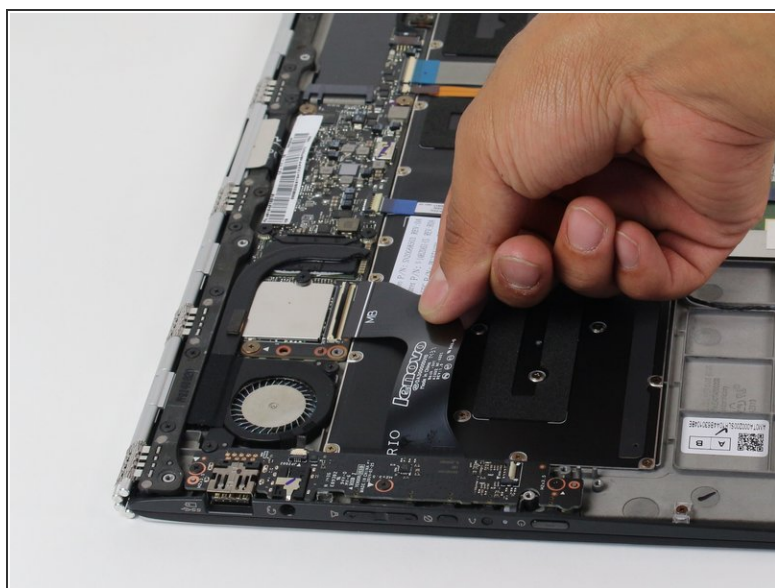
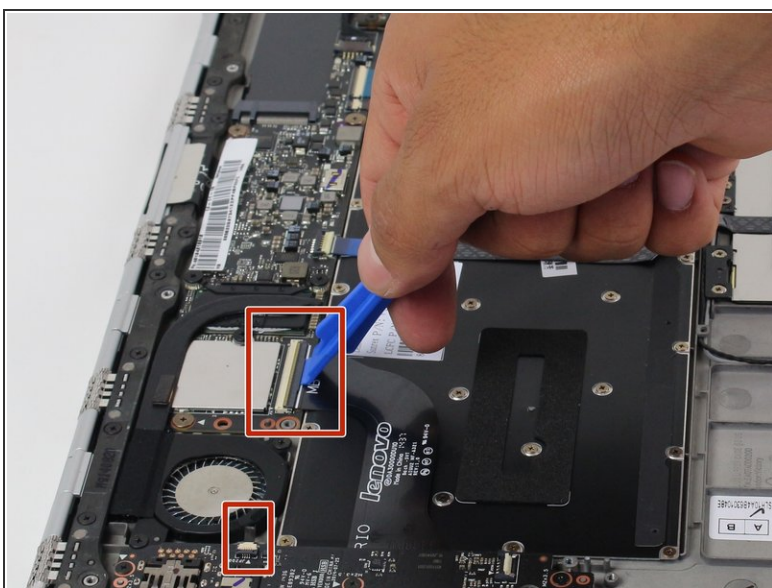
Step 11



- Removing the other speaker by unwinding cables.

i Lift both speakers carefully.

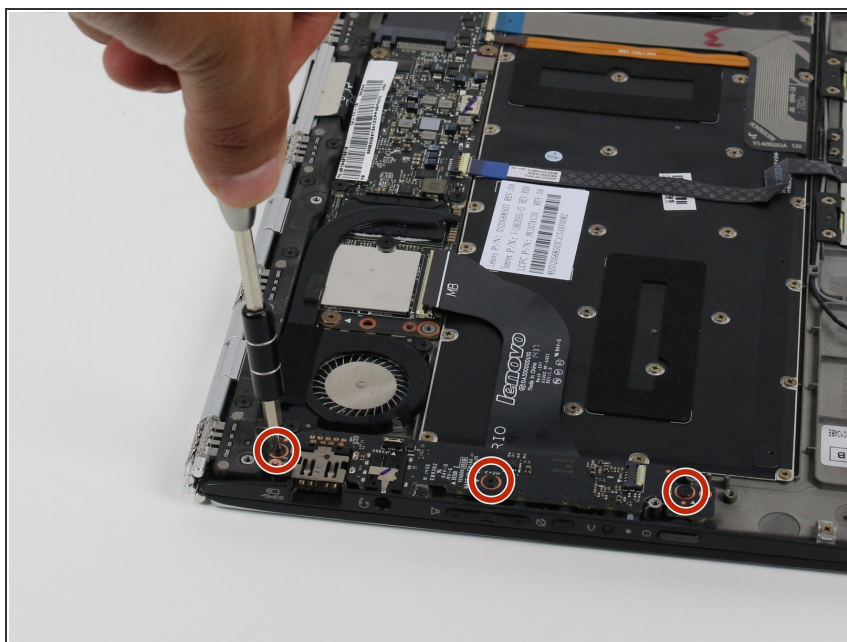
Step 12 — USB Ports



- Use the plastic opening tool to flip open the tab on each ribbon connector as shown.

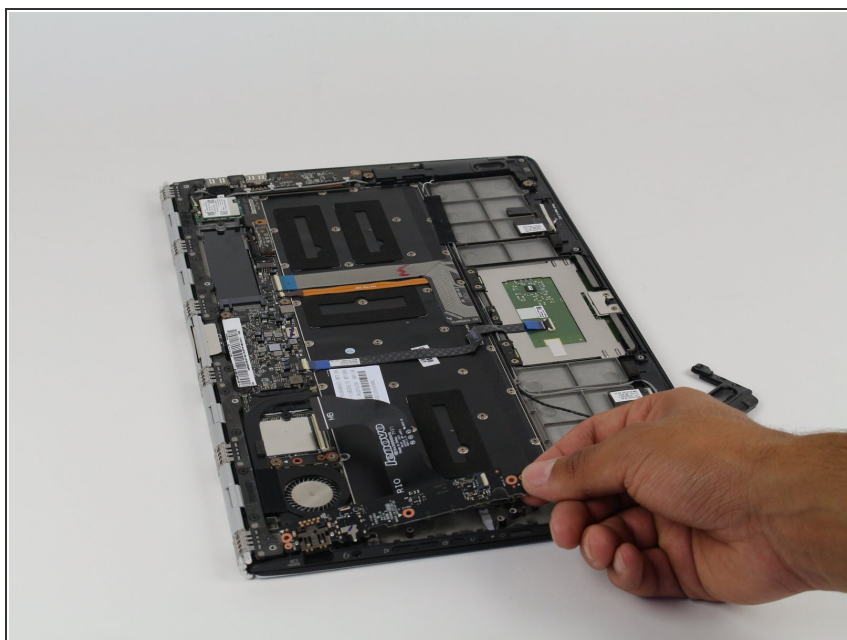
i Ribbon connectors can be fragile, so be gentle when disconnecting them.

Step 13



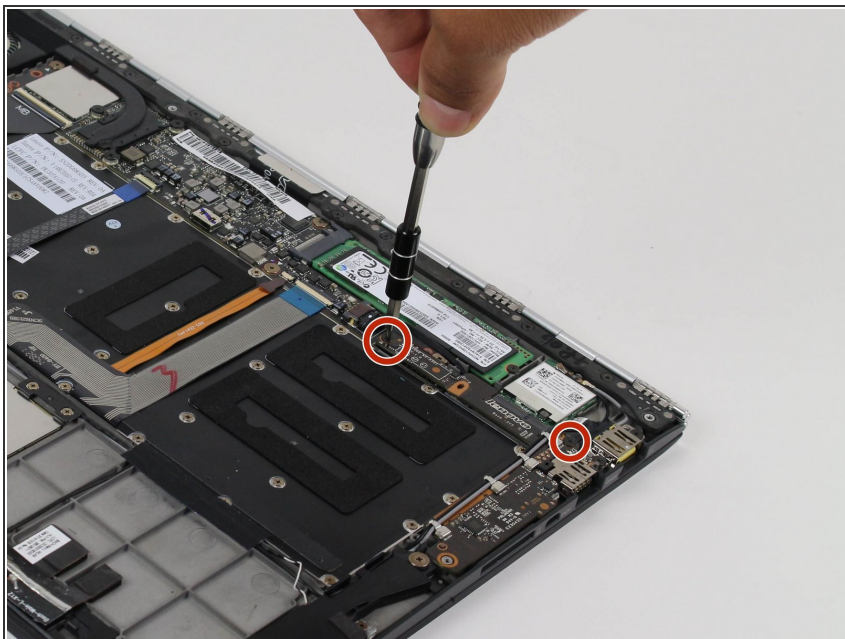
- Remove the three indicated 3.5 mm screws using the Philips 00 screwdriver.

Step 14



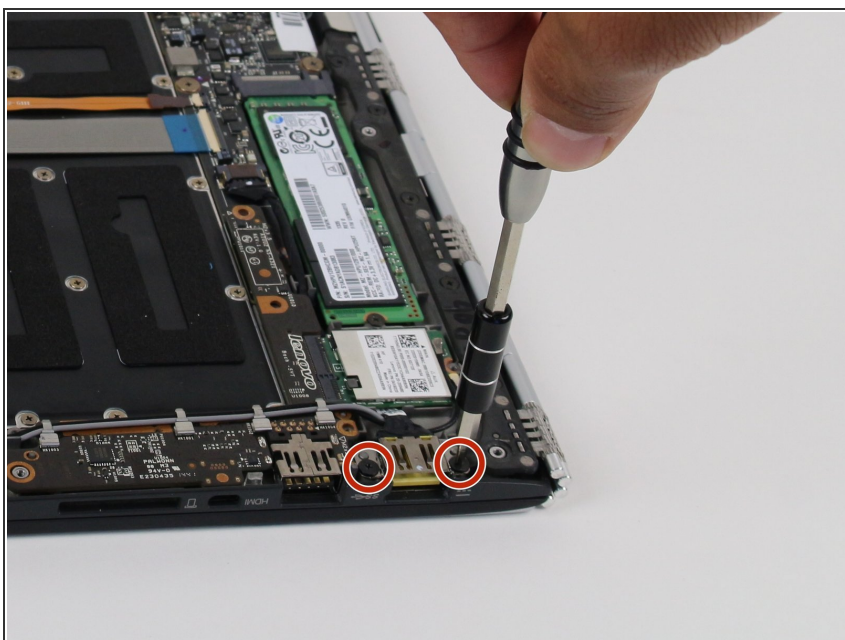
- Remove the USB assembly.
- i** If this is the side that was not working, then follow the steps backwards from here to put it back together.

Step 15



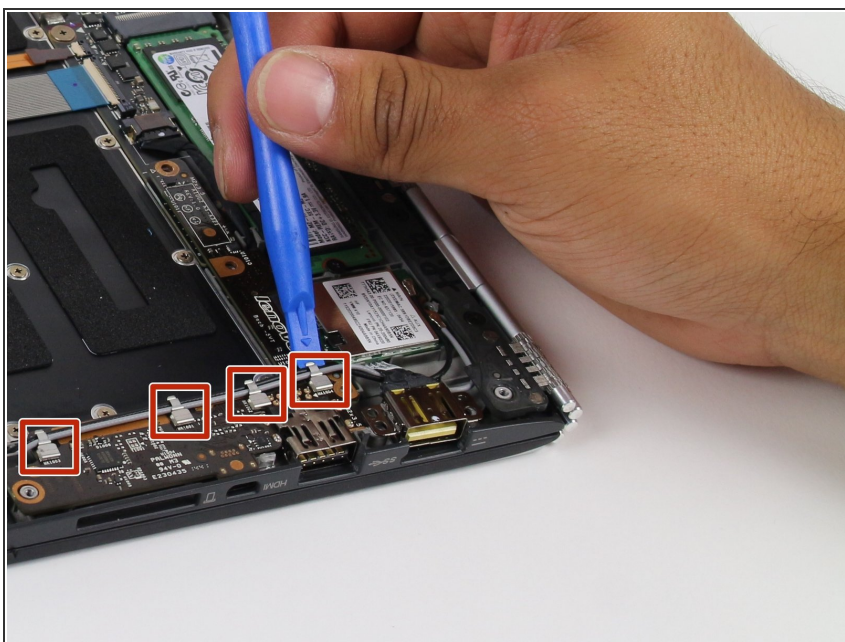
- On the other side of the laptop, remove the two 3.5 mm screws using the Philips 00 screwdriver.

Step 16



- Remove the two 2.5 mm screws using the Philips 00 screwdriver.

Step 17



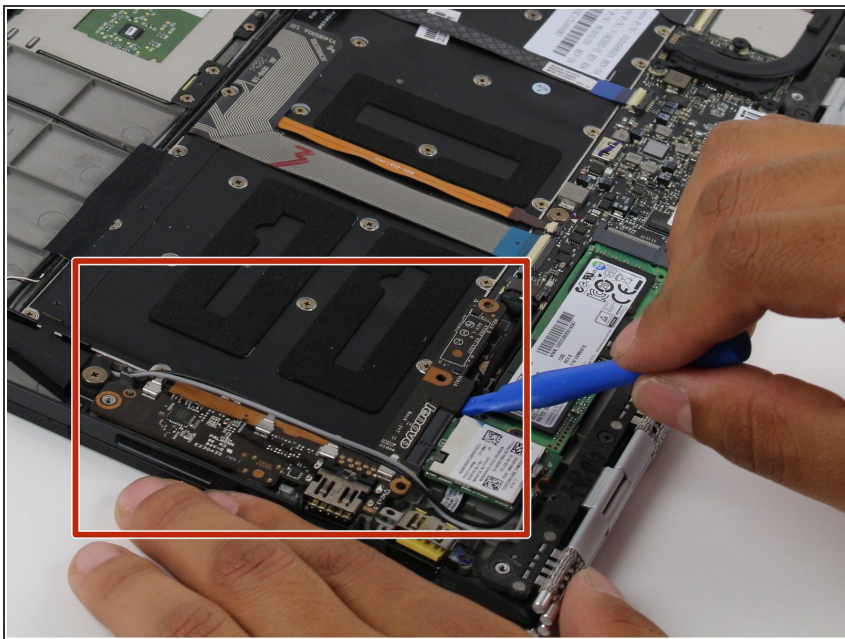
- Use the plastic opening tool to lift the metal cable holders.
- ⓘ Exercise caution. Cable holders will break if lifted too far.

Step 18



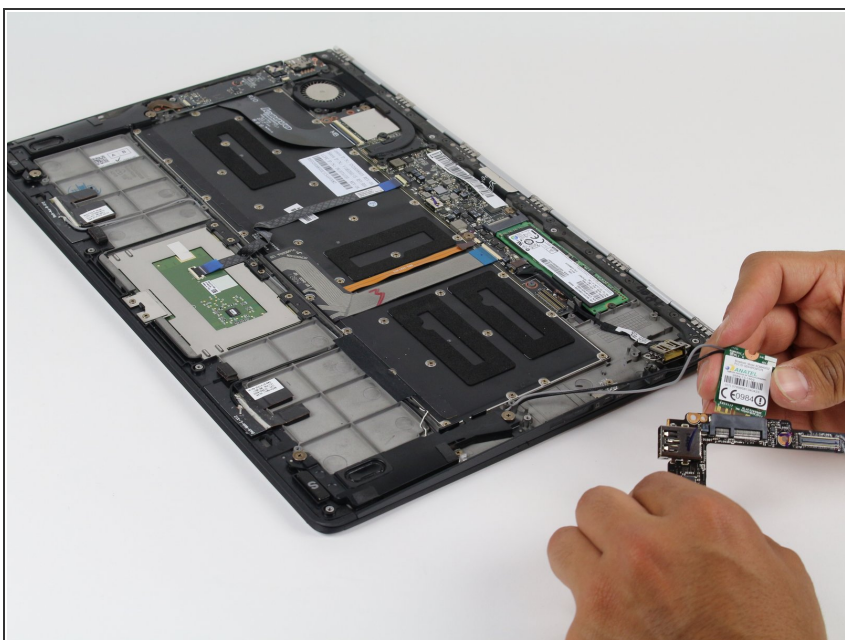
- Lift the USB port up and use the plastic opening tool to loop the wires around the USB port.

Step 19



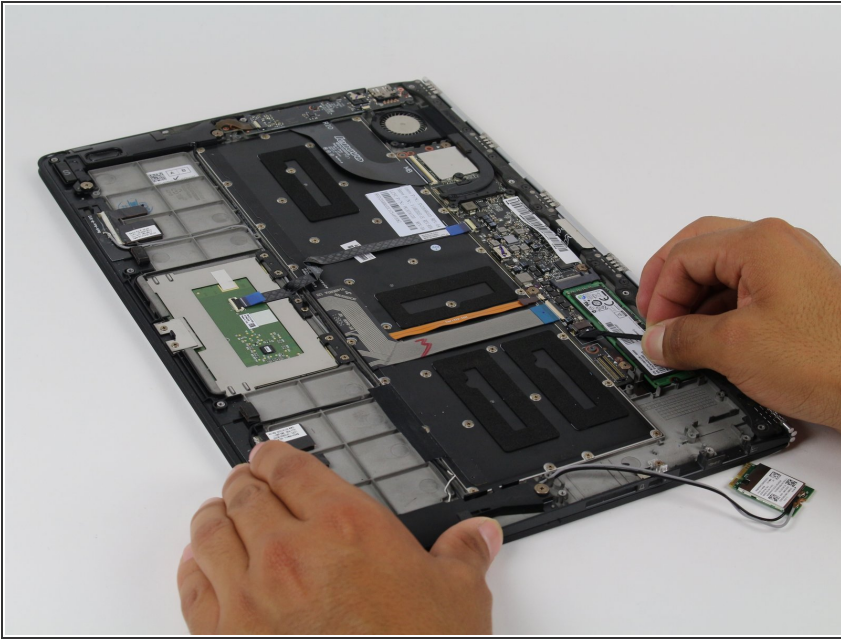
- Remove the USB assembly using the plastic opening tool.

Step 20



- Disconnect the WiFi card from the USB assembly.
- ⚠ Be careful with the connectors on the WiFi card as they are fragile.

Step 21



- Pull the second USB hub off.
- ⓘ Be careful when pulling out the cable.

To reassemble your device, follow these instructions in reverse order.