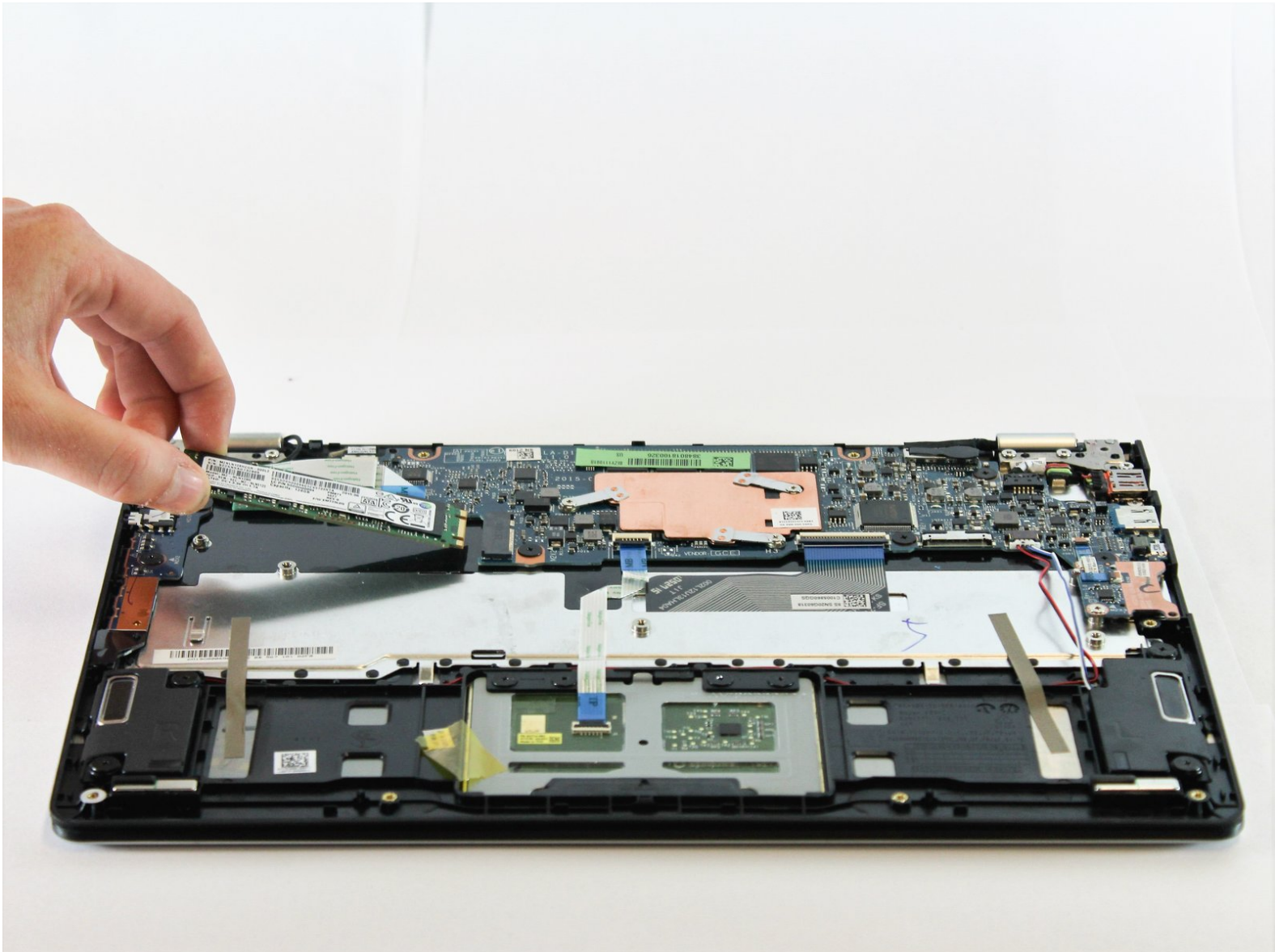




Lenovo Yoga 700-11ISK Solid State Drive Replacement

This guide explains how to remove the solid state drive.

Written By: Emma Morley



INTRODUCTION

The solid state drive stores data and works as a type of flash memory. Use this guide to remove the drive from your laptop if you would like to replace or upgrade it.

TOOLS:

- [T7 Torx Screwdriver](#) (1)
 - [Phillips #1 Screwdriver](#) (1)
-

Step 1 — Back Panel



- Flip your device so that the bottom panel is facing up.
- Remove the eleven 5mm Torx T5 screws from the back panel.

Step 2



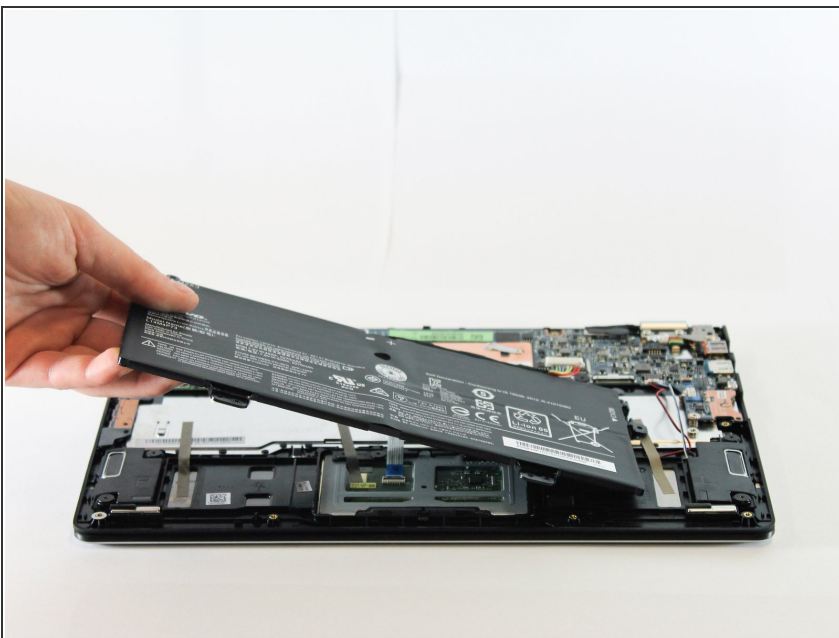
- Lift back panel off.

Step 3 — Battery



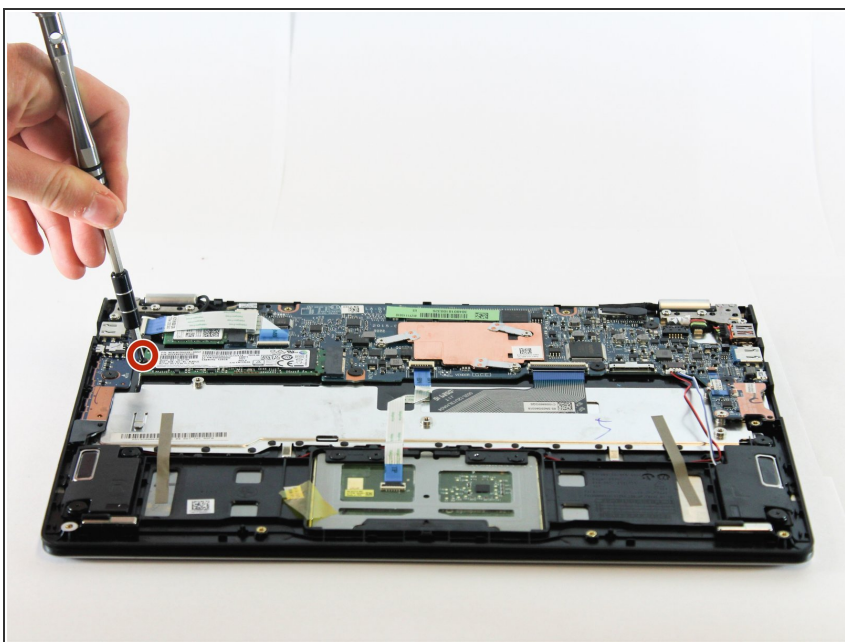
- Remove the two 3mm Phillips #1 screws holding the battery to the laptop chassis.
- Disconnect the battery from the IO board by holding the connector by the sides and gently pulling the connector out.

Step 4



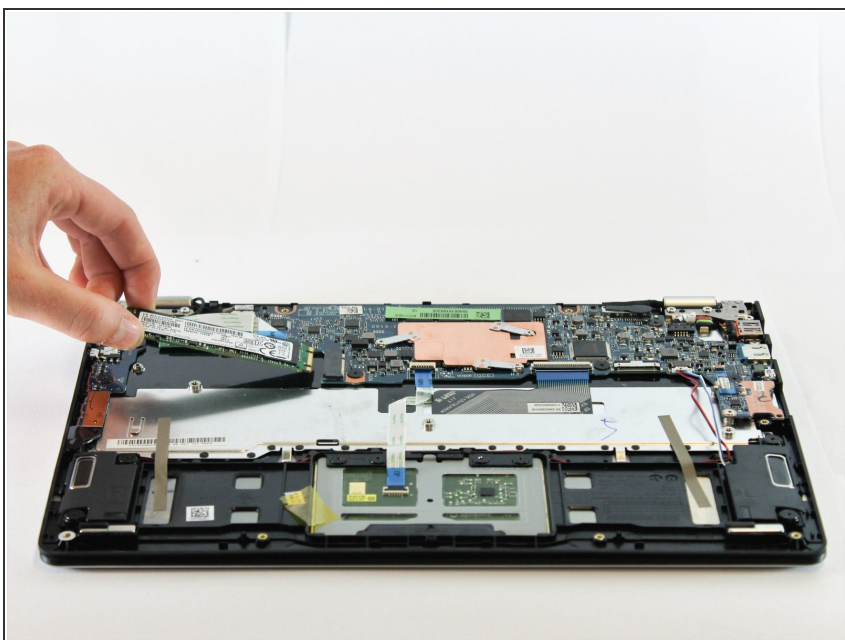
- Carefully remove the battery from the laptop.
- ⚠ Make sure that all wires still connected to the laptop are out of the way and not pulled out with the battery.

Step 5 — Solid State Drive



- Remove the one 2mm Phillips #1 screw holding the hard drive to the laptop.

Step 6



- Pull the solid state disk out of the connector and lift it out of the laptop.
- ☑ Make sure the hard drive is oriented correctly with the label facing up before re-inserting.

To reassemble your device, follow these instructions in reverse order.