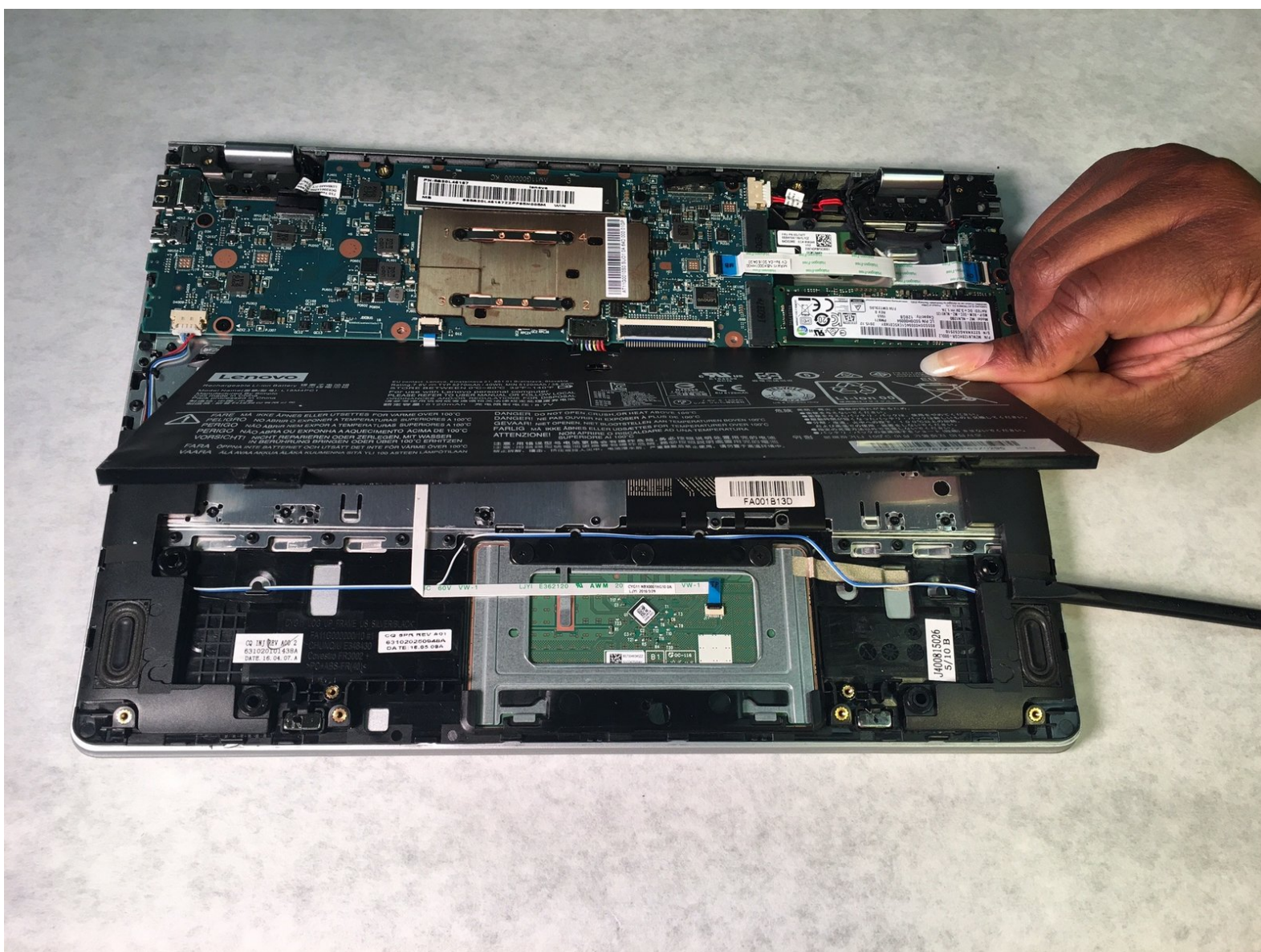




Lenovo Yoga 710-11ISK Battery Replacement

The Lenovo is powered by an internal battery located directly under the back panel. This guide will show you how to replace your battery.

Written By: Teairra Woods



INTRODUCTION

The Lenovo Yoga battery loses charge quickly. You have already tried unplugging it when it is fully charged, or adjusting the light to save energy. You may need to replace the battery. This guide will help you.



TOOLS:

- [T5 Torx Screwdriver](#) (1)
- [Phillips #1 Screwdriver](#) (1)



PARTS:

- [No parts needed](#) (1)

Step 1 — Battery



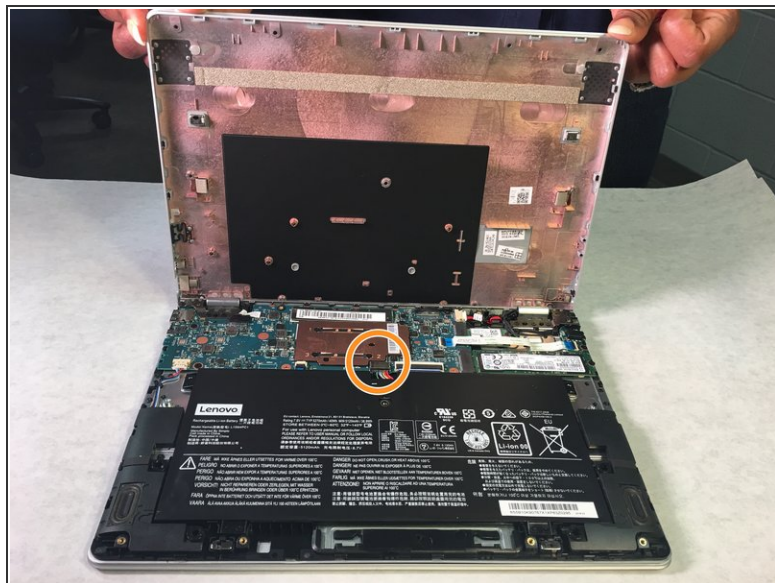
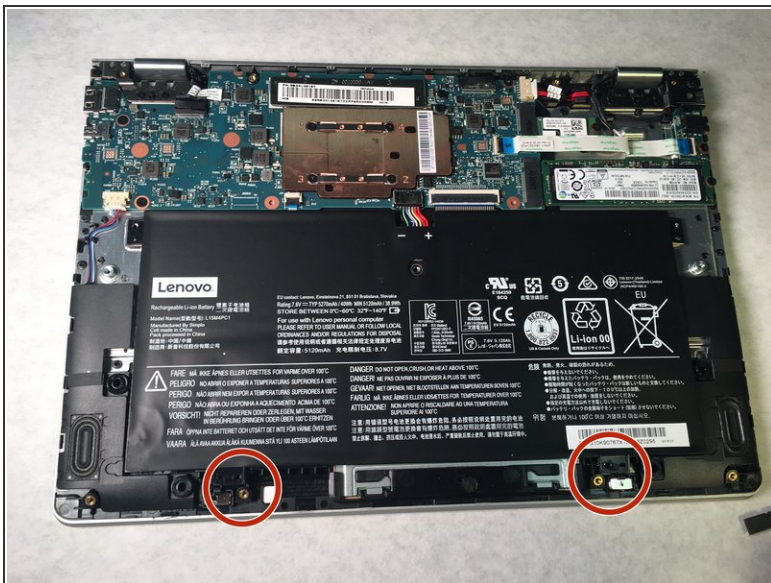
- Flip the device having the bottom panel facing you.
- Remove the eleven 5mm Torx T5 screws from the back panel.

Step 2



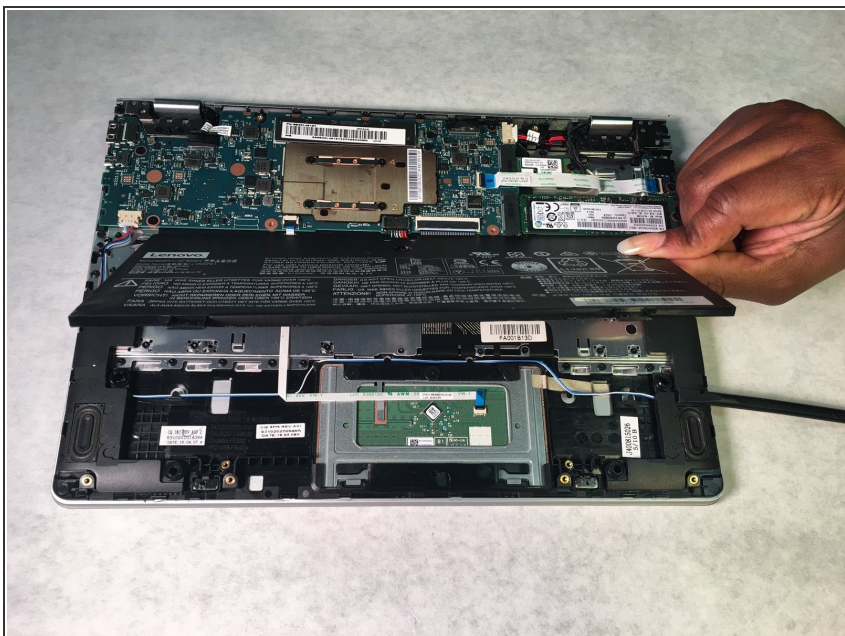
- Remove the back panel carefully.

Step 3



- Remove the two 3mm Phillips #1 screws that are holding the battery to the device.
- Hold the bundled cable connector on each side and carefully pull the connector to release it from the motherboard.

Step 4



- Remove the battery carefully from the device.

To reassemble your device, follow these instructions in reverse order.