



Written By: Aiden Baker



INTRODUCTION

This guide will show you how to replace your laptop's battery.




TOOLS:

- [T5 Torx Screwdriver](#) (1)
 - [iFixit Opening Tools](#) (1)
 - [JIS #1](#) (1)
-

Step 1 — Bottom Cover





 Start by flipping the device over so that you see the screws.

- Remove 7 Torx T5 short screws.
- Remove 3 Torx T5 long screws.

Step 2



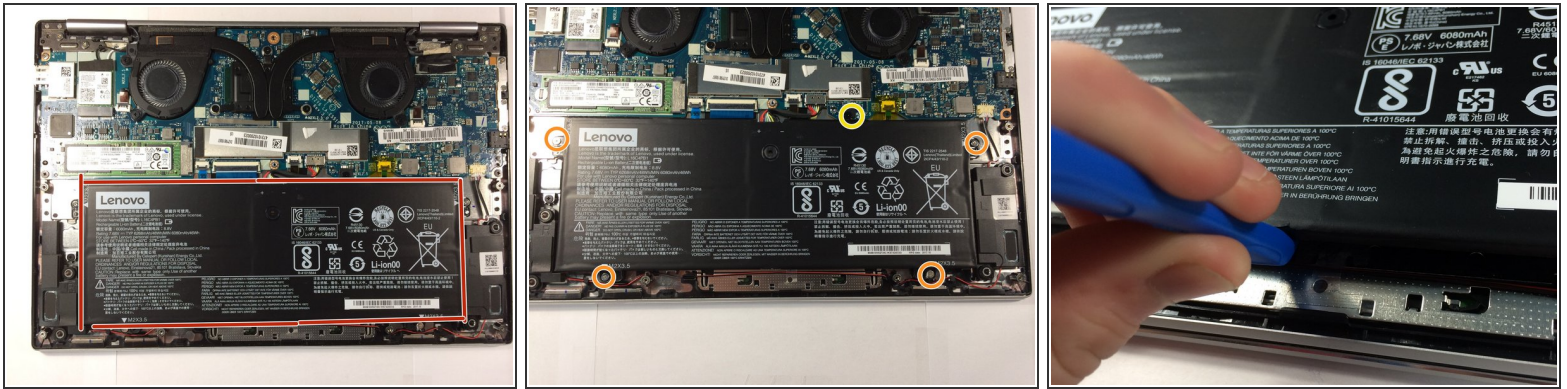
- starting from the USB port use your opening tool to gently pry up the case.
-  Make sure you are prying on the cover itself, not the metal shield around the USB port.
- Pry along the laptop in the orders the arrows show.
-  Do NOT pry along the top side, or you risk damaging the casing. Stay with the arrows.

Step 3



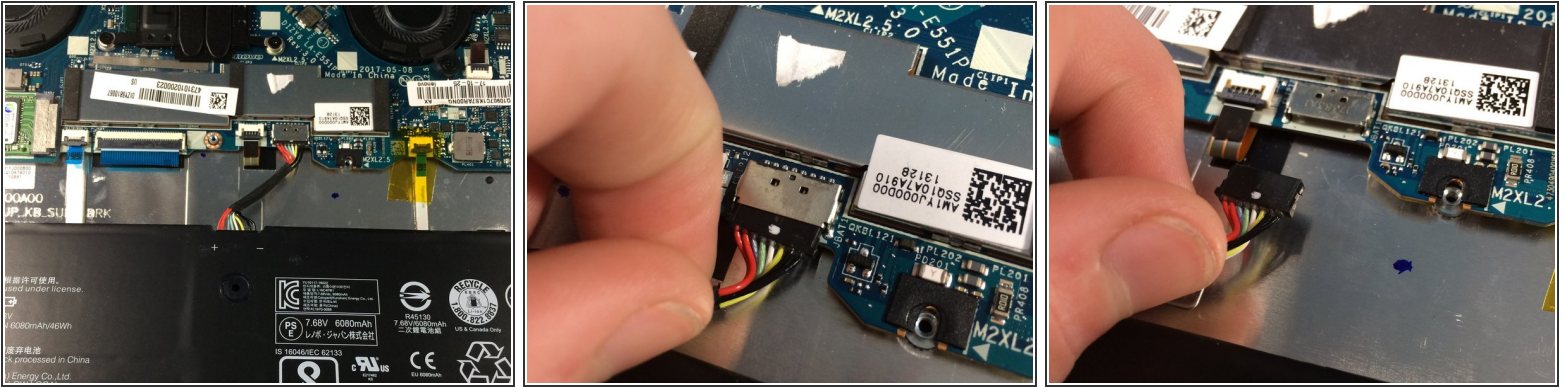
- Lift the case from the bottom side. NOT the side with the hinges.
⚠ When you feel resistance, do NOT keep lifting or you will damage the housing.
- Once you feel resistance, gently pull the case towards you. (away from the hinges.)
- Remove the case.

Step 4 — Battery



- This is the battery. For guides that are for other parts, the battery is removed for the reason of it being a pain to connect or disconnect while screwed in.
- ⚠ Be careful not to short anything on the motherboard, as the battery cannot be disconnected before removal.
- Remove 4 J1 Philips screws.
- Remove 1 J1 philips screw
- ⚠ Do not mix these screws up, as if you put the longer screw where the shorter screw belongs, you will damage the shield around the keyboard.
- slightly lift the battery using your plastic opening tool.
- ⚠ Do not lift the battery out all the way, as it is still connected to the motherboard.
- ⚠ Do NOT puncture or deform the battery or it may catch fire or even explode.

Step 5



- Pull the battery towards you until the wire is accessible.
- gently tug and wiggle on the wire until it pops out.
- Remove the battery.

To reassemble your device, follow these instructions in reverse order. Please remember to dispose of the battery properly.