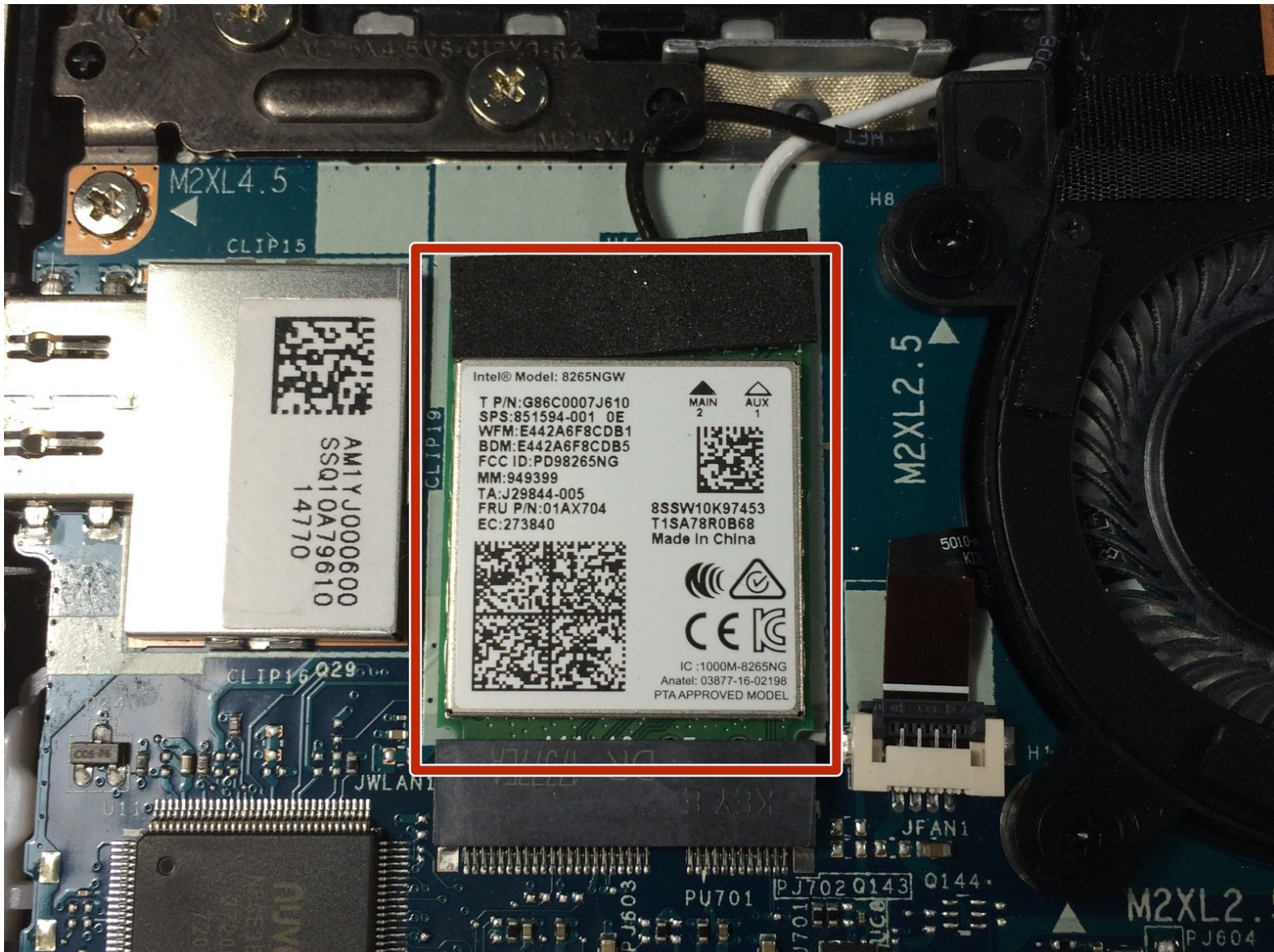




Lenovo Yoga 720 Wireless Adapter Replacement

This guide will show how to replace the wireless adapter.

Written By: Aiden Baker



INTRODUCTION

This guide will show you how to replace the wireless adapter.




TOOLS:

- [T5 Torx Screwdriver](#) (1)
 - [iFixit Opening Tools](#) (1)
 - [JIS #1](#) (1)
 - [Tweezers](#) (1)
 - [Spudger](#) (1)
-

Step 1 — Bottom Cover





 Start by flipping the device over so that you see the screws.

- Remove 7 Torx T5 short screws.
- Remove 3 Torx T5 long screws.

Step 2



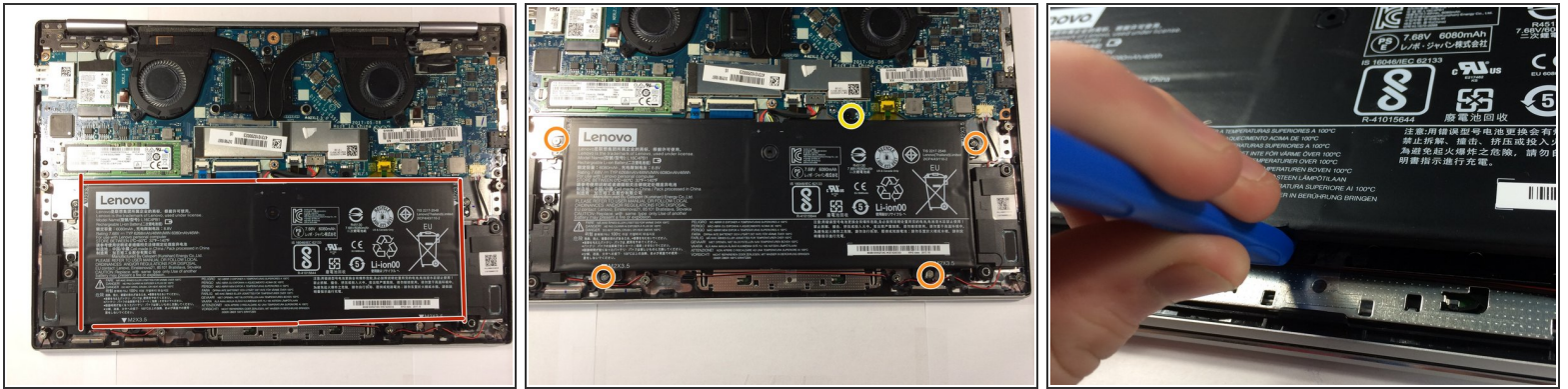
- starting from the USB port use your opening tool to gently pry up the case.
-  Make sure you are prying on the cover itself, not the metal shield around the USB port.
- Pry along the laptop in the orders the arrows show.
-  Do NOT pry along the top side, or you risk damaging the casing. Stay with the arrows.

Step 3



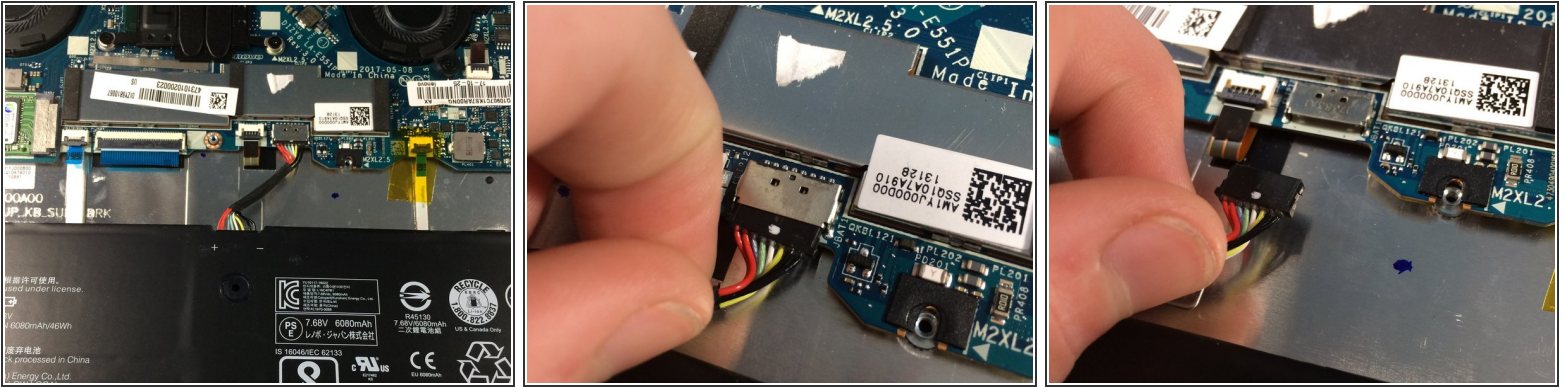
- Lift the case from the bottom side. NOT the side with the hinges.
⚠ When you feel resistance, do NOT keep lifting or you will damage the housing.
- Once you feel resistance, gently pull the case towards you. (away from the hinges.)
- Remove the case.

Step 4 — Battery



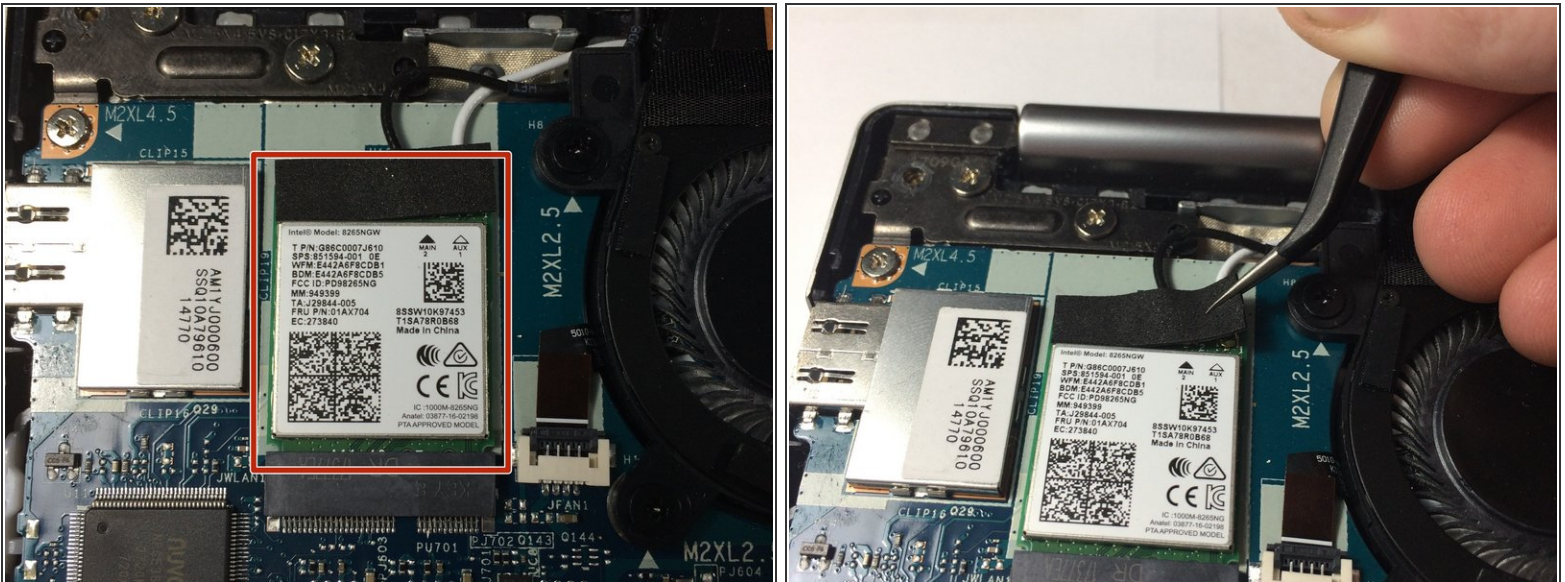
- This is the battery. For guides that are for other parts, the battery is removed for the reason of it being a pain to connect or disconnect while screwed in.
 - ⚠ Be careful not to short anything on the motherboard, as the battery cannot be disconnected before removal.
- Remove 4 J1 Philips screws.
- Remove 1 J1 philips screw
 - ⚠ Do not mix these screws up, as if you put the longer screw where the shorter screw belongs, you will damage the shield around the keyboard.
- slightly lift the battery using your plastic opening tool.
 - ⚠ Do not lift the battery out all the way, as it is still connected to the motherboard.
 - ⚠ Do NOT puncture or deform the battery or it may catch fire or even explode.

Step 5



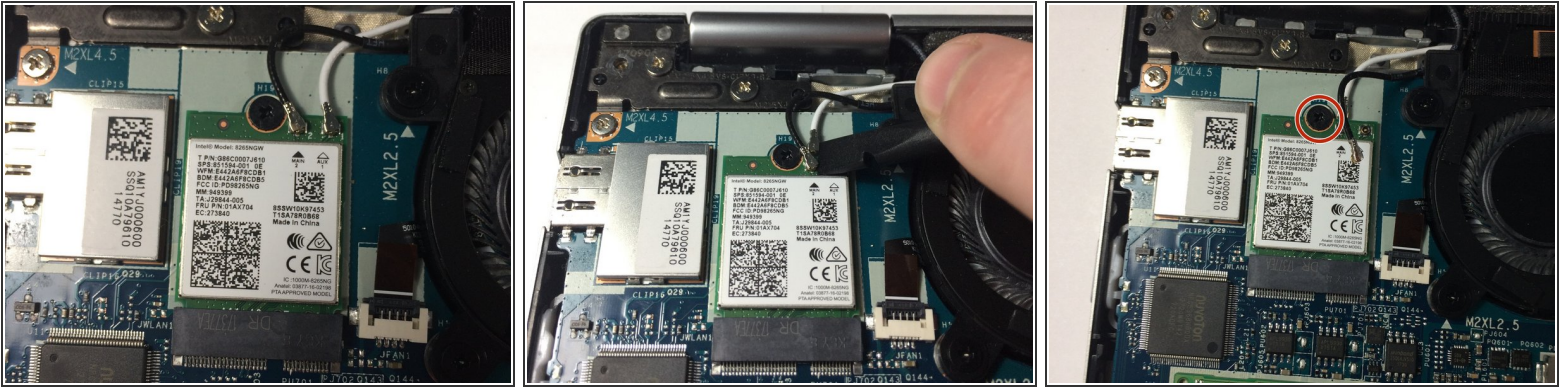
- Pull the battery towards you until the wire is accessible.
- gently tug and wiggle on the wire until it pops out.
- Remove the battery.

Step 6 — Wireless Adapter



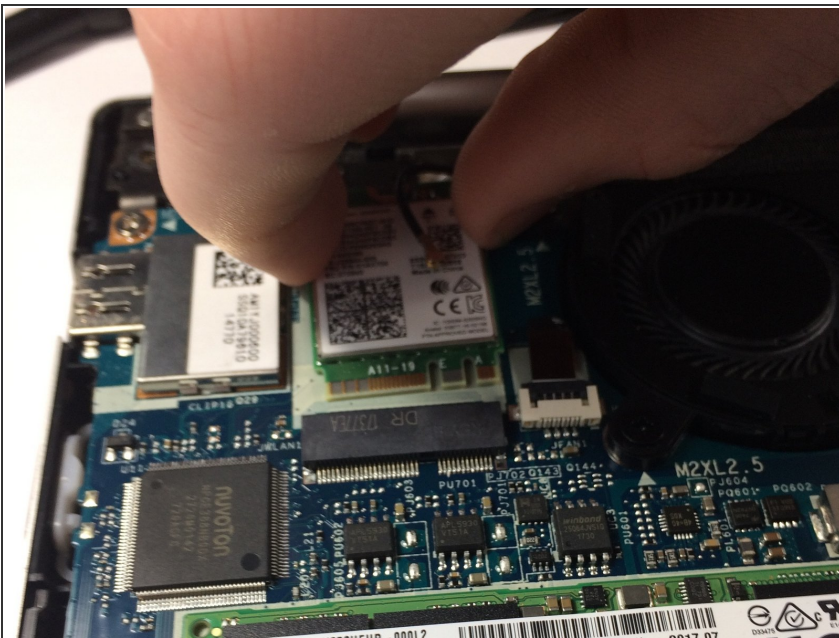
- This is the wireless adapter.
- Using tweezers, remove the fuzzy tape.

Step 7



- Remove the white and black antenna cables using a spudger.
- ① Move any cables in the way out of the way.
- Remove one JIS1 screw holding the wireless card in place.

Step 8



- Gently pull out the wireless card.

To reassemble your device, follow these instructions in reverse order.