



Lenovo Yoga 910-13IKB SSD Replacement

This guide describes how to replace the SSD for the Lenovo Yoga 910-13IKB.

Written By: Nikhil Nagarajan



INTRODUCTION

Boot time and the amount of time it takes for the device to read and write information are directly related to the storage in your device. Over time, this storage can become slow; in extreme cases, it can become corrupted. In addition, it is also possible that the amount of storage your device has isn't enough for your needs, so you might wish to replace it with a larger capacity drive. For those looking to replace or upgrade the storage on their Lenovo Yoga 910-13IKB, Lenovo has made it simple; this replacement requires only a JIS #00 screwdriver.



TOOLS:

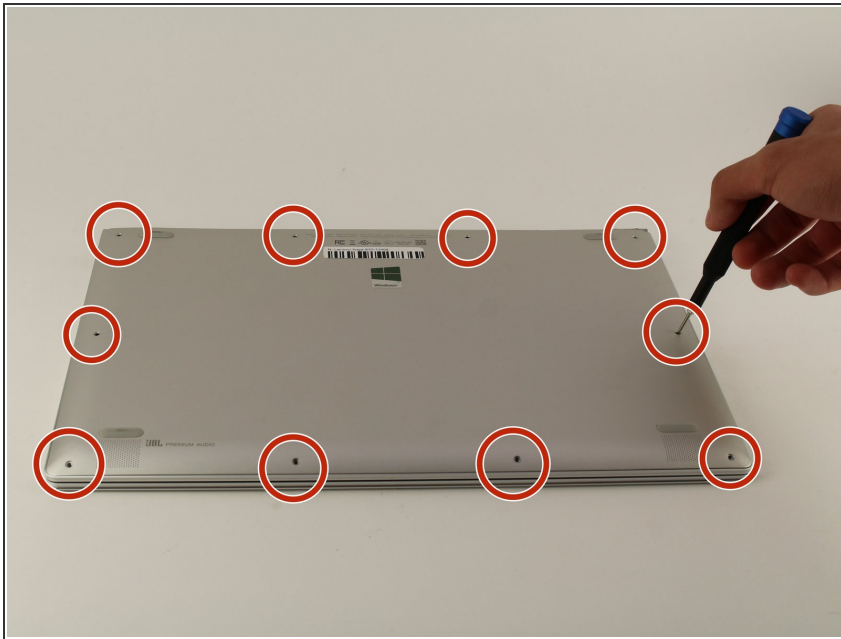
- [JIS #00 Screwdriver](#) (1)



PARTS:

- [1 TB GB M2 SSD](#) (1)
- [250 GB M2 SSD](#) (1)
- [500 GB M2 SSD](#) (1)

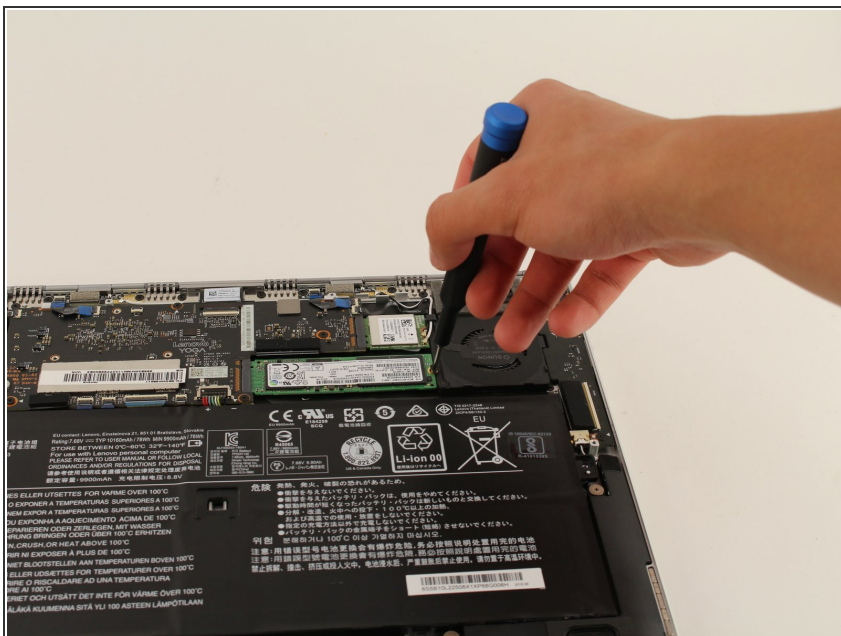
Step 1 — Storage



⚠ Completely power off the laptop and disconnect it from any power sources before beginning.

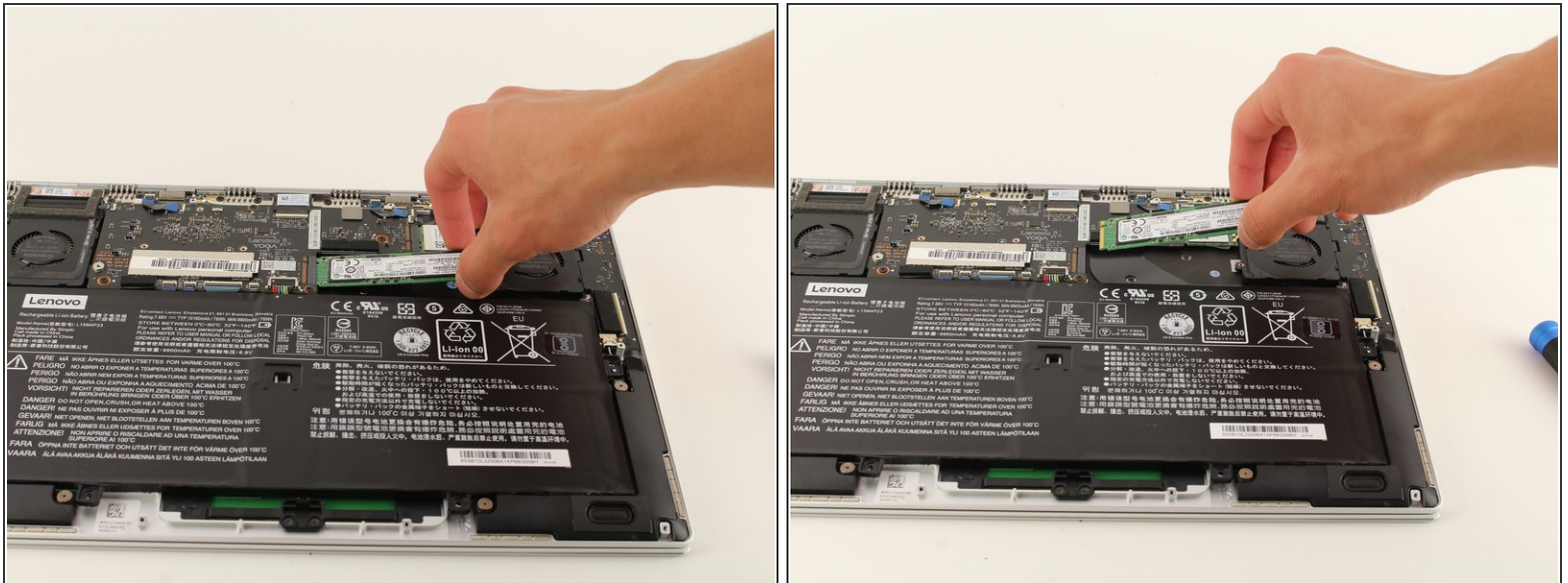
- Turn the laptop over and remove the 10 3mm JIS #00 screws along the perimeter of the bottom panel.
- Remove the panel.

Step 2



- Remove the 3mm JIS #00 screw holding the storage in place.

Step 3



- Pull up lightly on the drive and gently pull it out of the connector.

To reassemble your device, follow these instructions in reverse order.