



Lenovo Yoga 920-13IKB Fingerprint Sensor Replacement

How to replace the fingerprint sensor on the Lenovo Yoga 920-13IKB.

Written By: Alyssa McCulloch



INTRODUCTION

This guide shows how to replace the fingerprint sensor on the Lenovo Yoga 920-13IKB.




TOOLS:

- [iFixit Opening Tools](#) (1)
 - [T5 Torx Screwdriver](#) (1)
 - [Phillips #00 Screwdriver](#) (1)
-

Step 1 — Back Cover



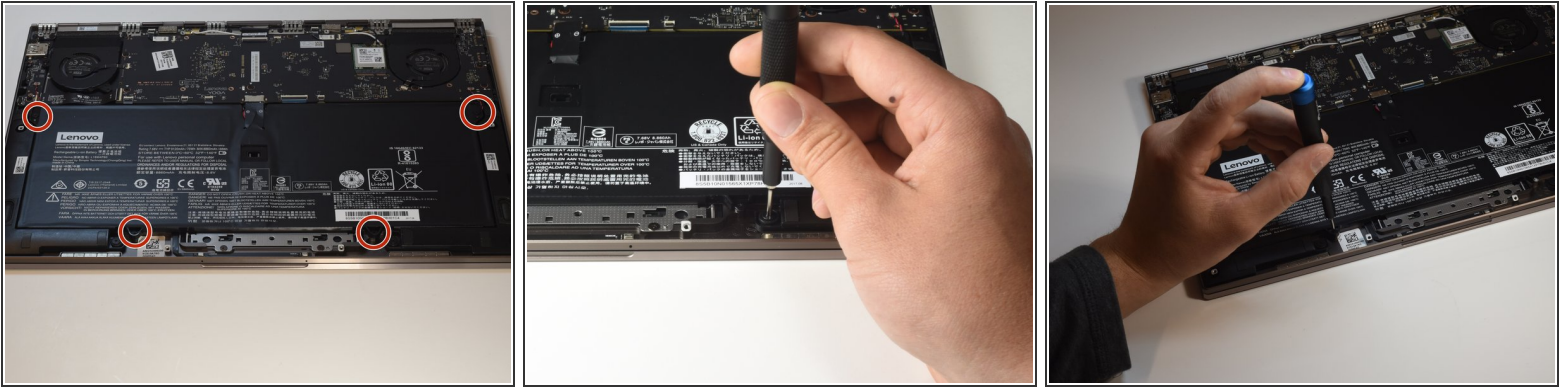
-  Flip the device over to access the screws on the back cover.
- Remove the ten 5mm Torx T5 screws on the back cover to loosen the back cover.

Step 2



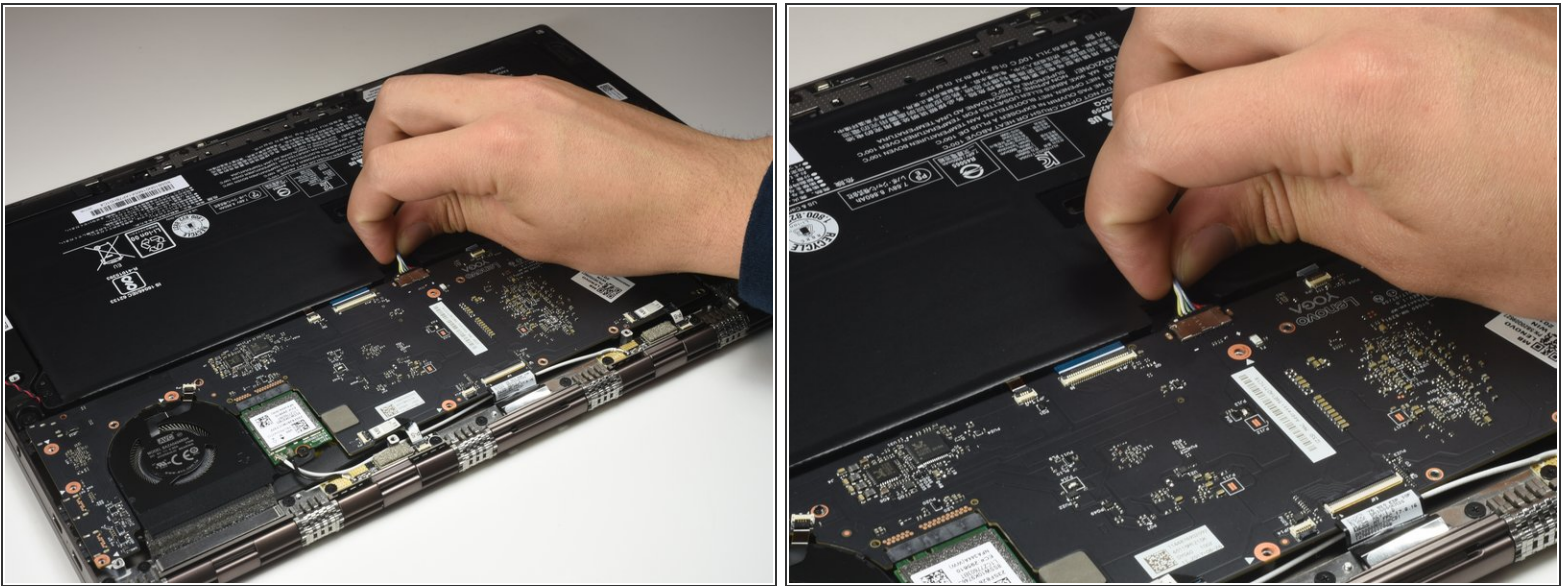
- Slide the iFixit Opening Tool under the back cover to lift it up.
- Pull up on the cover with your hand to release the tab holding the center of the cover in place.

Step 3 — Battery





- Remove the four 5mm Phillips #00 screws that hold the battery in place.

Step 4

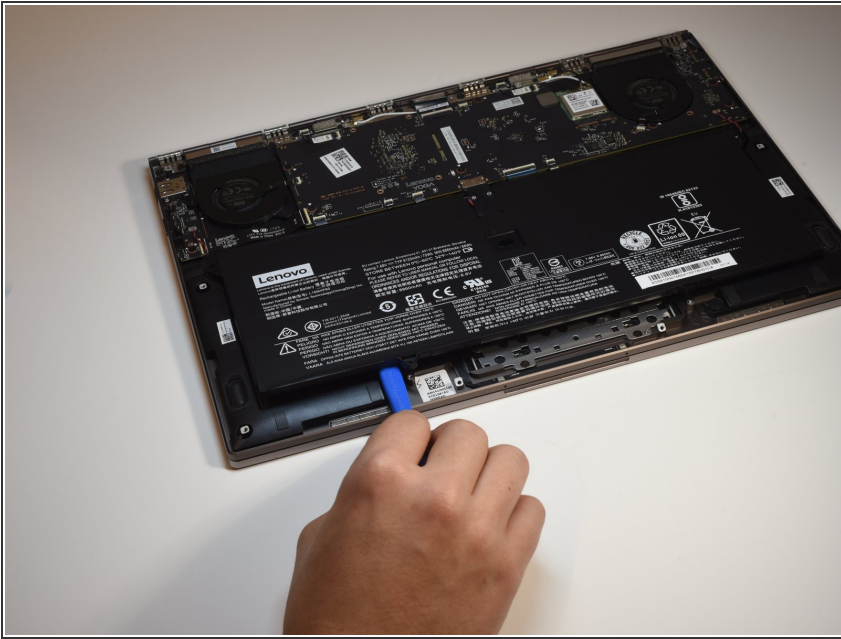


- Grab the grouping of wires with your fingers close to the connector and gently pull to disconnect the battery from the motherboard.

 The wire grouping is located underneath the thin flap near the center of the battery.

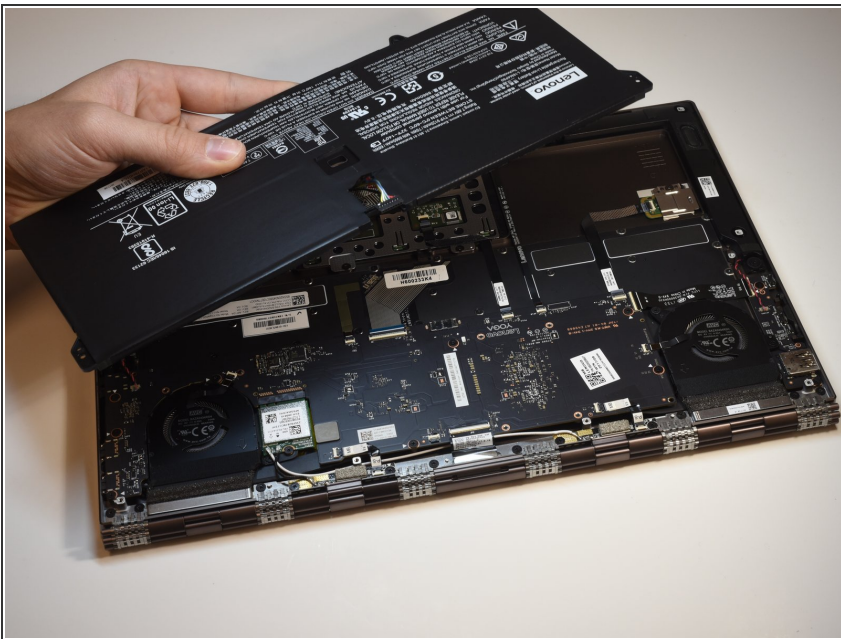
 Do not lift the battery out before disconnection from the motherboard to prevent shortages or damage.

Step 5



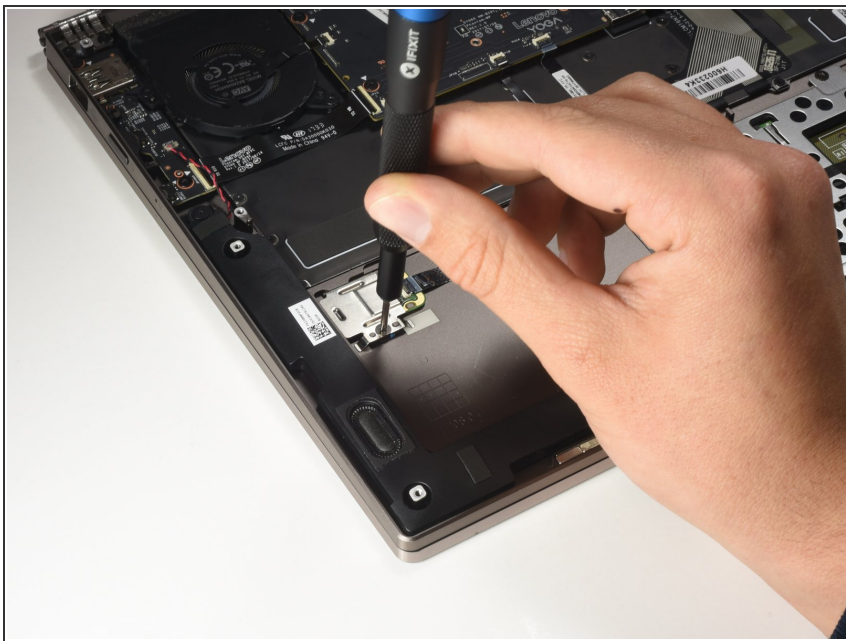
- Use the iFixit Opening Tool to lift the battery up enough to grab it with your hands.

Step 6



- Remove the battery.

Step 7 — Fingerprint Sensor



- Remove the 3mm Phillips #00 Screw to loosen the sensor.

Step 8



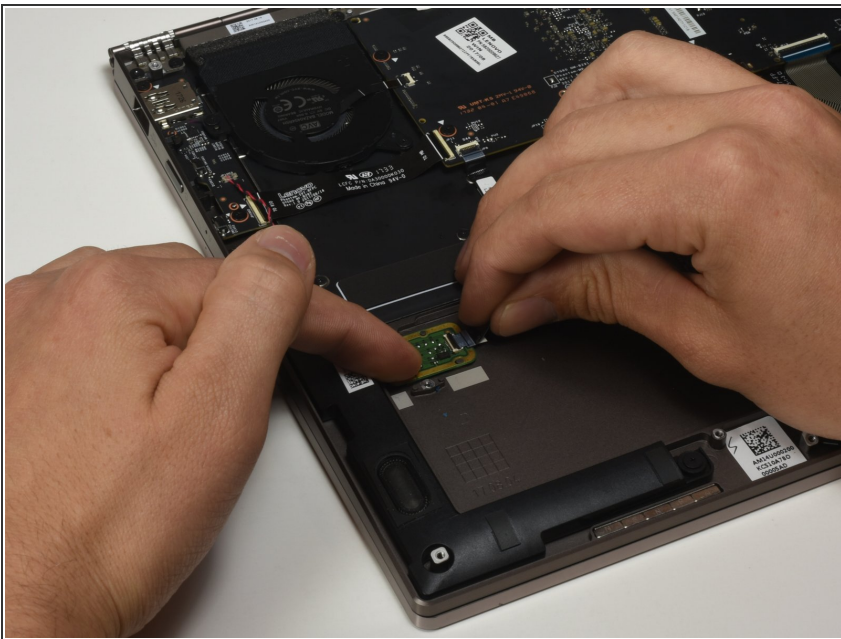
- Lift up the cover on the fingerprint sensor using the iFixit Opening Tool and remove the cover from the sensor.

Step 9



- Flip up the cable connector tab using the iFixit Opening Tool to release the ribbon wire.

Step 10



- Unplug the ribbon wire from the sensor to completely free the sensor.

Step 11



- Lift the fingerprint sensor with the iFixit Opening Tool and remove it from the device.

To reassemble your device, follow these instructions in reverse order.