



# Lenovo Yoga 920-13IKB Screen Replacement

How to replace the screen on the Lenovo Yoga 920-13IKB.

Written By: Alyssa McCulloch



# INTRODUCTION

The guide shows how to replace the screen on the Lenovo Yoga 920-13IKB.



## TOOLS:

- [iFixit Opening Tools](#) (1)
- [Tweezers](#) (1)
- [Phillips #000 Screwdriver](#) (1)



## PARTS:

- [Lenovo Yoga 920-13 LCD Panel](#) (1)

## Step 1 — Screen



- Rotate the device into tablet mode so the device's screen is facing up.

## Step 2



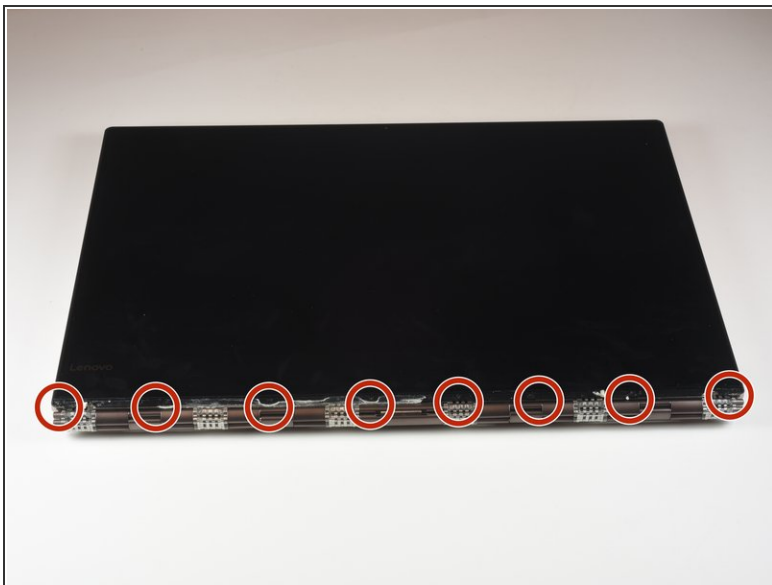
- Pry the metal cover up from the bottom of the screen with the iFixit Opening Tool to reveal the corners of the white adhesive strip.
- Pull the metal cover off the device until it's completely free.

✦ Clean off the old adhesive and straighten the metal cover when reassembling.

✦ Use a new adhesive when reassembling.

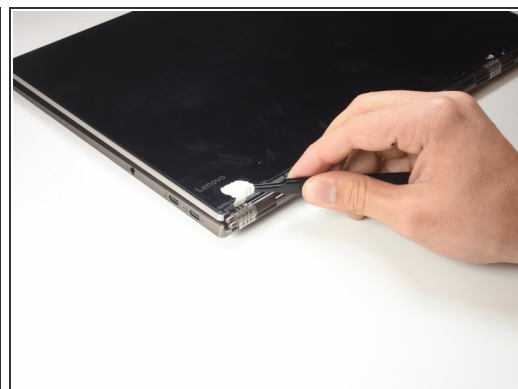
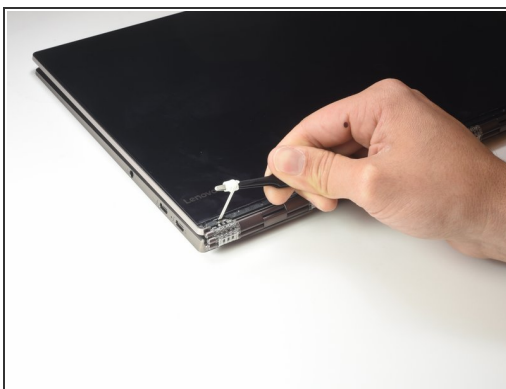
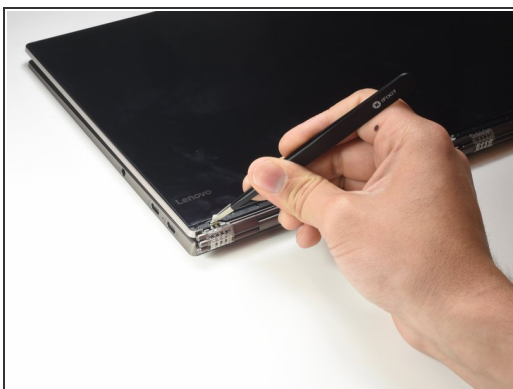
⚠ Avoid bending the metal cover to prevent damage to the device.

## Step 3



- Remove the eight 3mm Phillips #000 screws that were below the metal cover to loosen the screen.

## Step 4



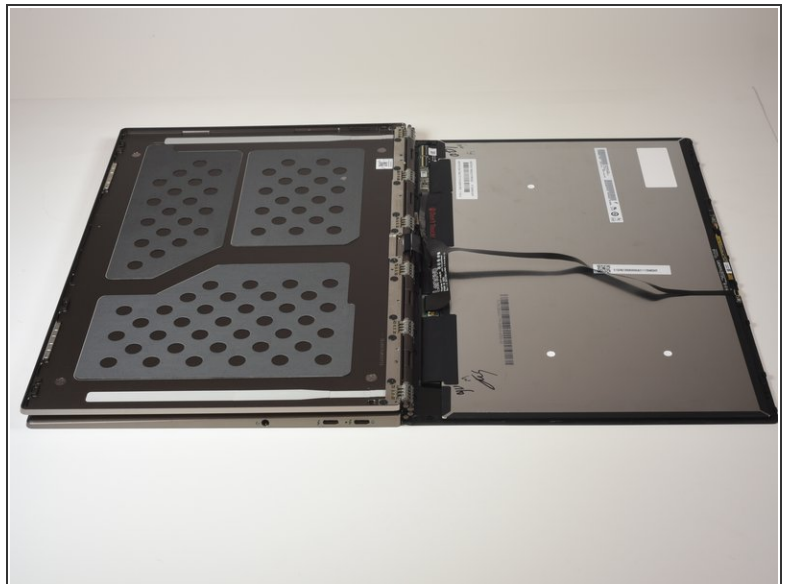
- Pull out the white adhesives using the iFixit Tweezers.
- Roll the tape around the iFixit Tweezers to remove successfully.

## Step 5



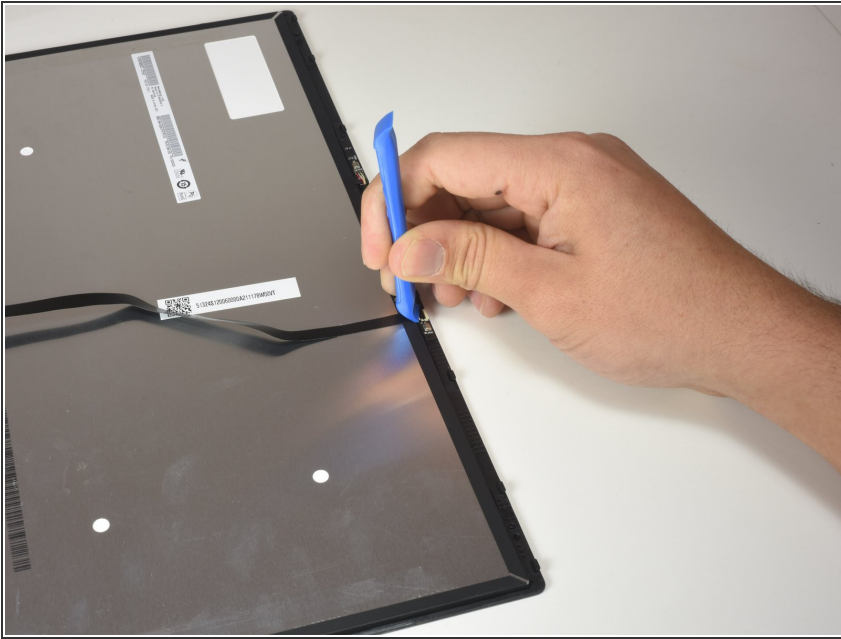
- Pry up the screen with the iFixit Opening Tool.

## Step 6



- Lift the screen with your hands and place the the screen face down, keeping the device in the same location.

## Step 7



- Flip up the black tab on the connector at the top of the screen with the iFixit Opening Tool.

## Step 8



- Use the iFixit Tweezers to remove the ribbon cable from the connector.

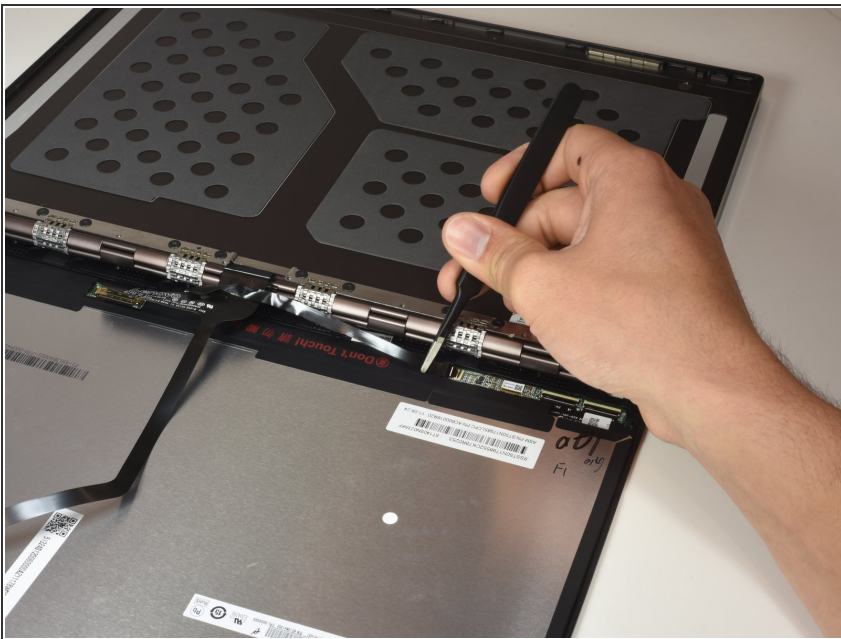


## Step 9



- Flip up the black tab on the smallest connector at the bottom of the screen with the iFixit Opening Tool.

## Step 10



- Use the iFixit Tweezers to remove the ribbon cable from the connector.

## Step 11



- Flip up the thick black cable at the bottom of the screen with your thumb.
- Use the iFixit Opening Tool to lift up the brass tab to free up the cable.

## Step 12



- Remove the ribbon cable from the connector to detach the screen from the device.

To reassemble your device, follow these instructions in reverse order.