



# Lenovo Yoga C930-13IKB Wi-Fi Card Replacement

Use this guide to replace the Intel 9260 Wi-Fi card in the Lenovo Yoga C930-13IKB.

Written By: Jessie Boucher



## INTRODUCTION

If you are having Wi-Fi problems and none of the solutions found on [this troubleshooting page](#) work, you may need to replace the physical Wi-Fi card in your Lenovo Yoga C930-13IKB. The only Wi-Fi card that is compatible with the Lenovo Yoga C930-13IKB is the Intel 9260 Wi-Fi card. Do not install a different Wi-Fi card.

Before buying a new card, check if all the wires are connected to the Wi-Fi card currently in your laptop. Poor physical connection to the motherboard or antenna will cause Wi-Fi problems.



### TOOLS:

- [T5 Torx Screwdriver](#) (1)
  - [iFixit Opening Tools](#) (1)
  - [Phillips #0 Screwdriver](#) (1)
-

## Step 1 — Back Cover



- Flip the device over so that the underside is facing up.
- Remove the six 3.5 mm T5 Torx screws.

## Step 2



- Pry off the back cover using the plastic opening tool.
- Loosen the back cover in multiple spots using the opening tool, then remove the whole back.
- ⓘ You may have to run the plastic tool along the edges until you find a small gap to separate the back cover from the laptop.
- ⚠ Do not use a metal tool when working with your device.

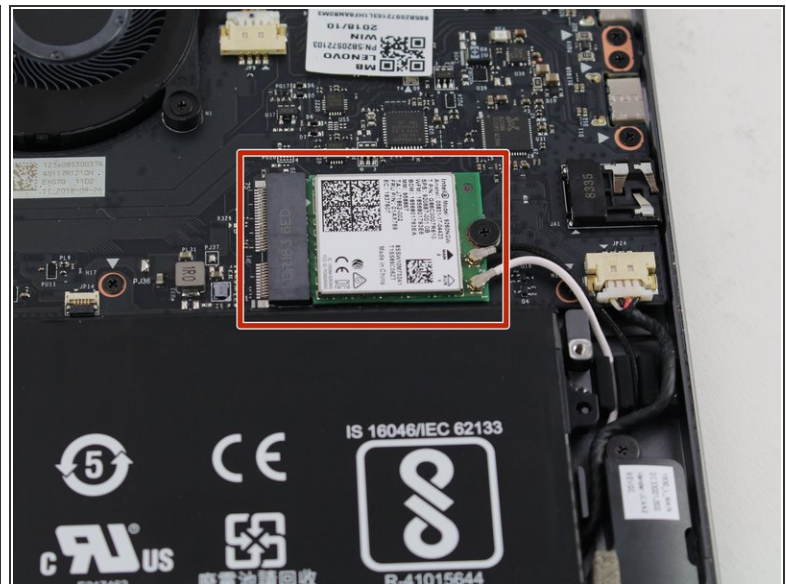


## Step 3



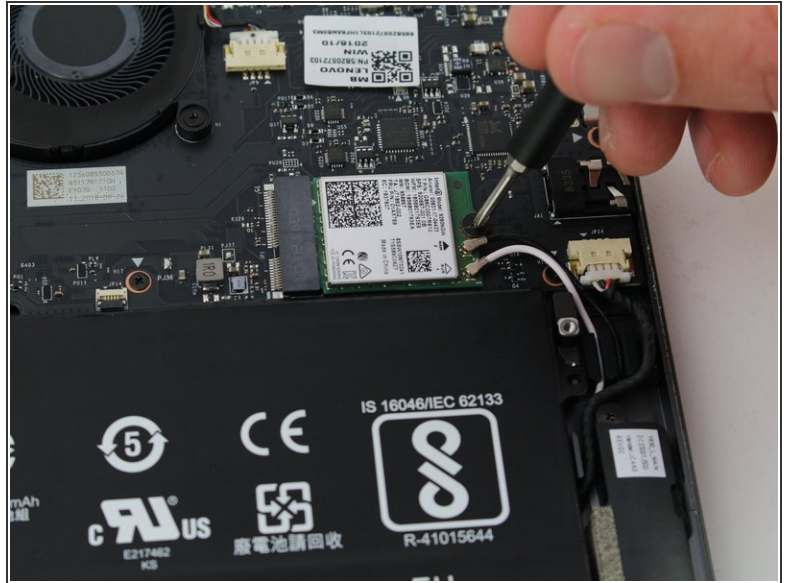
- Carefully lift the cover off with your hands.

## Step 4 — Wi-Fi Card



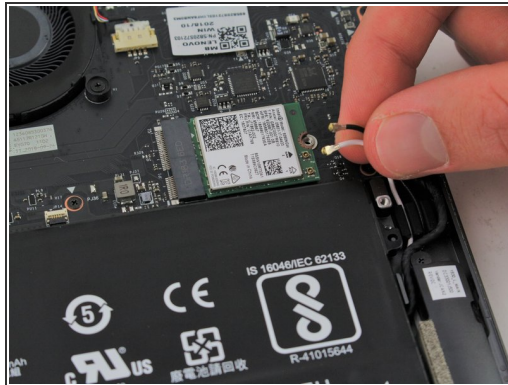
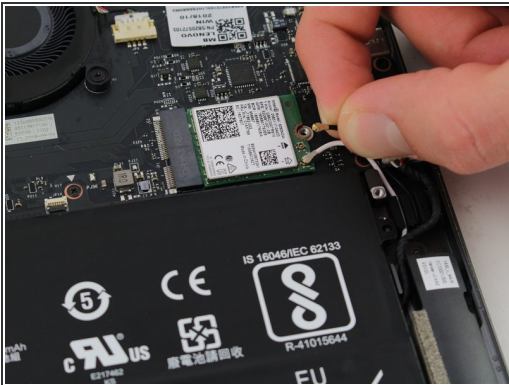
- Find the Wi-Fi card located on the right just above the battery. It is a green chip with a white label that says "Intel 9260" somewhere on it.

## Step 5



- Use a Phillips #00 screwdriver to remove the single 2mm screw that attaches the card to the motherboard.

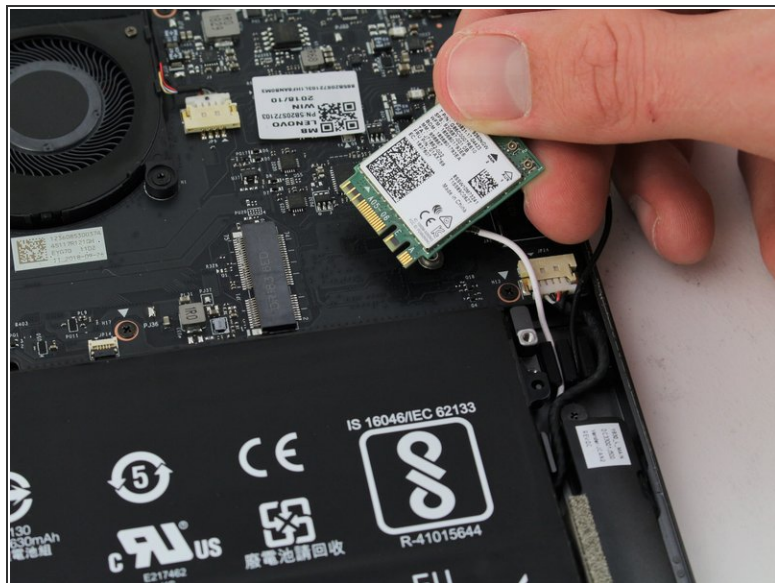
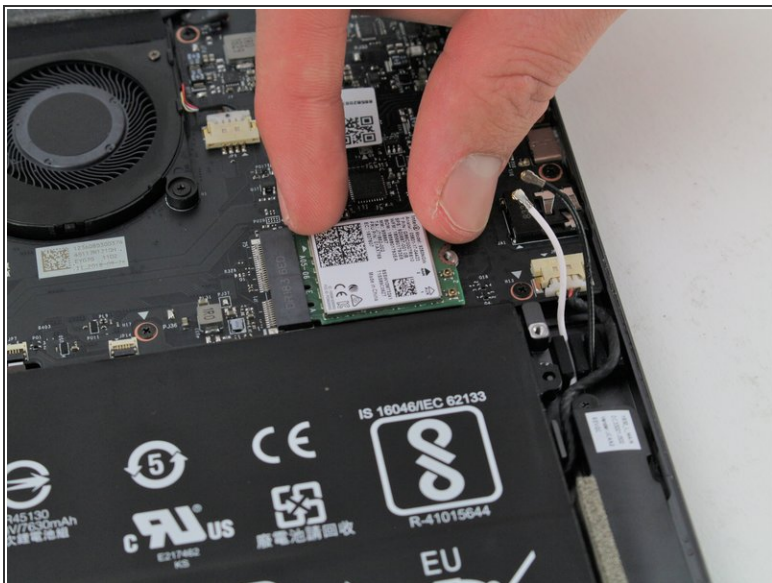
## Step 6



- Gently pull or use the [iFixit opening tool](#) to detach the black and white wires from the card.
- ☑ When reassembling, these wires are difficult to reattach, so be patient. Line the wires up with your fingers and press down on the connections with the opening tool.



## Step 7



- Pinch the card on either side and pull to the right to unplug it from the motherboard.

To reassemble your device, follow these instructions in reverse order.