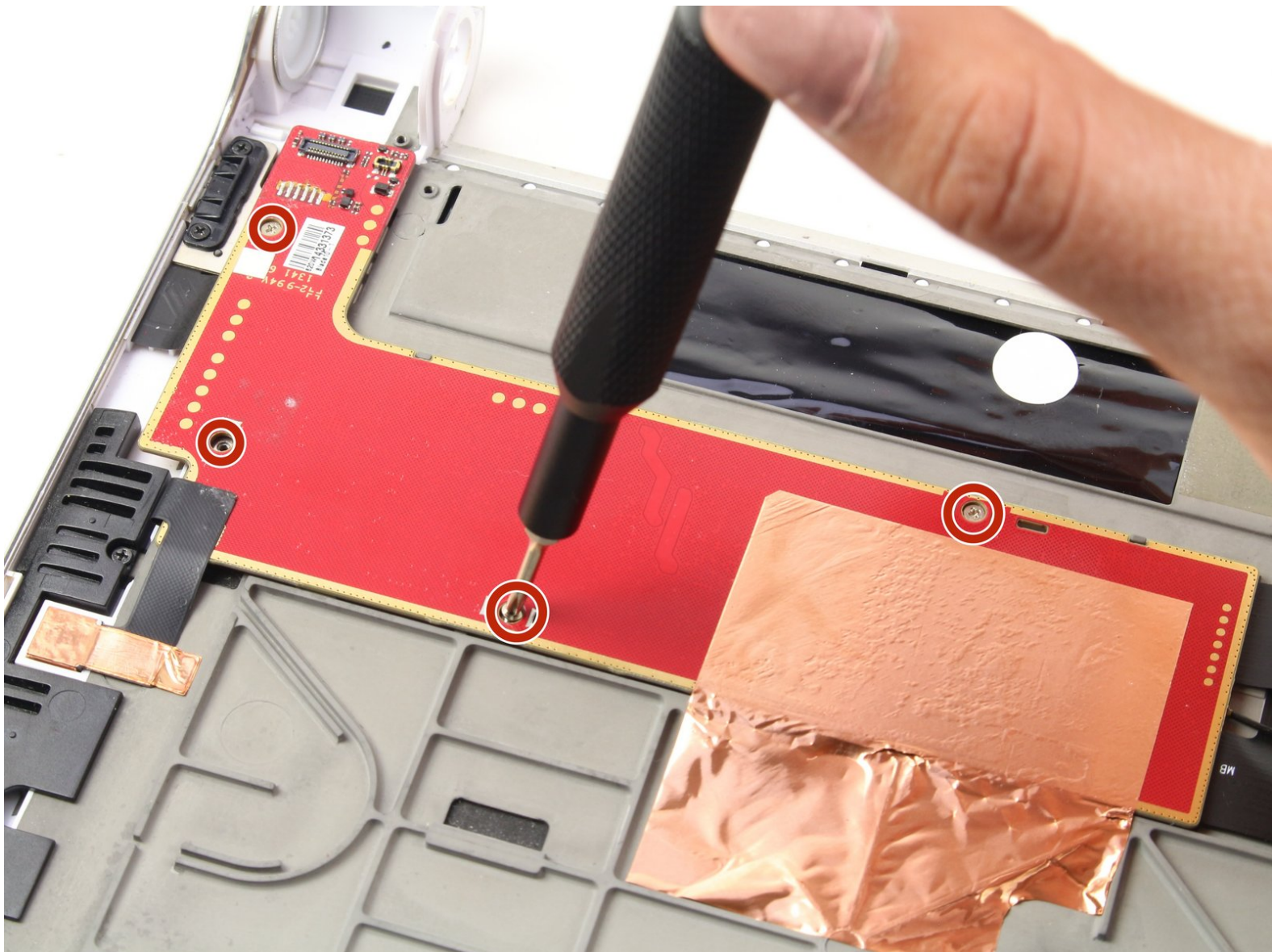




Lenovo Yoga Tablet 10 Camera PCB Replacement

This guide will show you how to replace the camera's PCB on your Lenovo Yoga Tablet 10.

Written By: Juan Benjamin



INTRODUCTION

Before starting this guide, you should have a way to prevent the loss of small screws.

TOOLS:

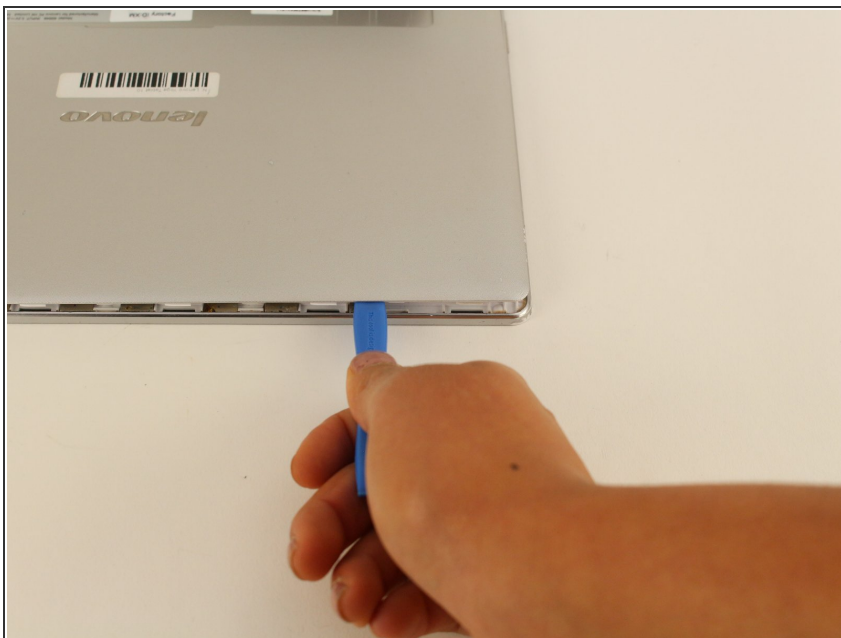
- [iFixit Opening Tools](#) (1)
 - [Spudger](#) (1)
 - [Phillips #000 Screwdriver](#) (1)
 - [Precision Tweezers Set](#) (1)
 - [Phillips #00 Screwdriver](#) (1)
-

Step 1 — Back Cover



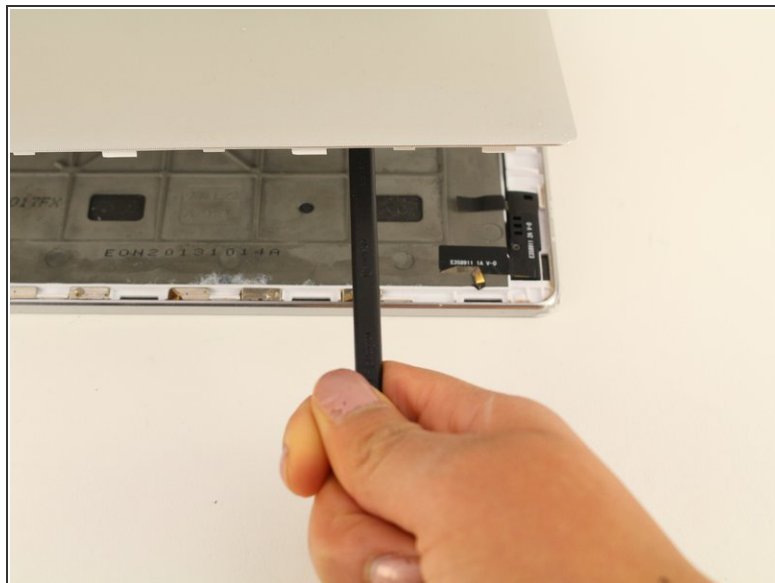
- Remove the two Phillips #000 screws.
- ❗ These screws are located behind the stand for the device.
- ❗ Our device did not include these screws.

Step 2



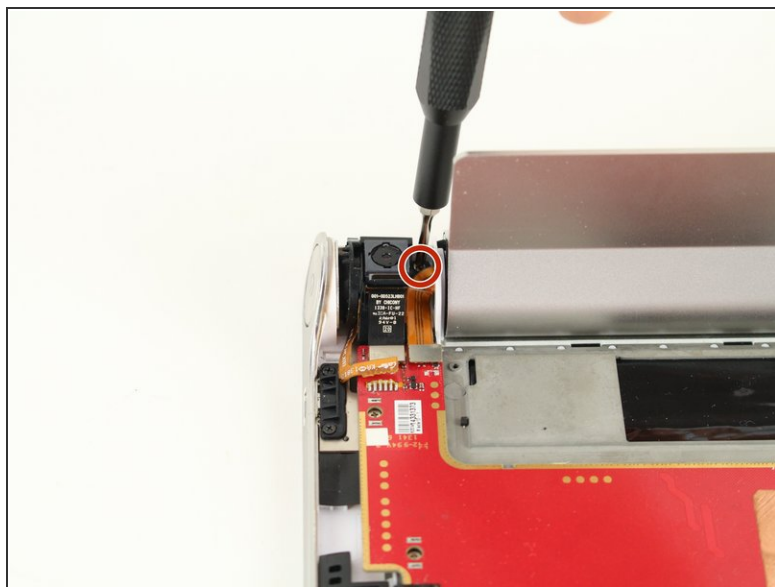
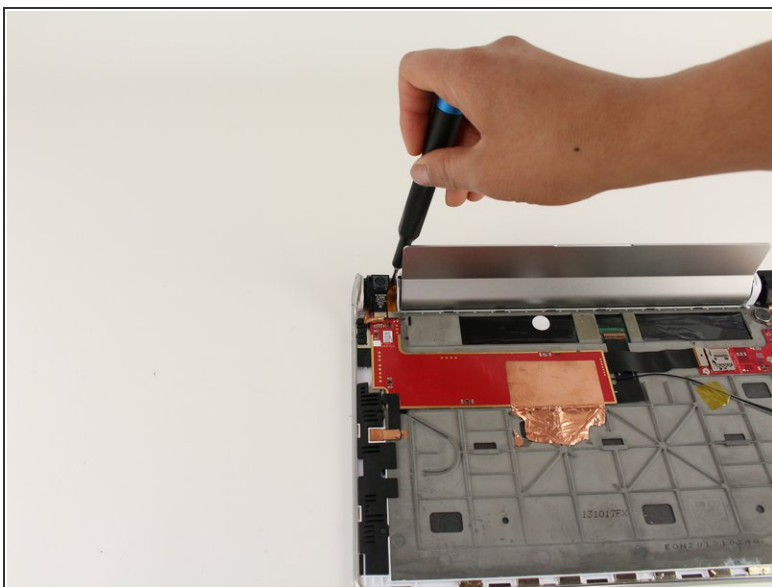
- Use a plastic iFixit opening tool to pry the edges of the back case loose by placing it in between the edge of the cover and the screen.
- ⚠ Do not immediately attempt to remove the back of the case without attempting Step three, or you risk snapping the back cover.

Step 3



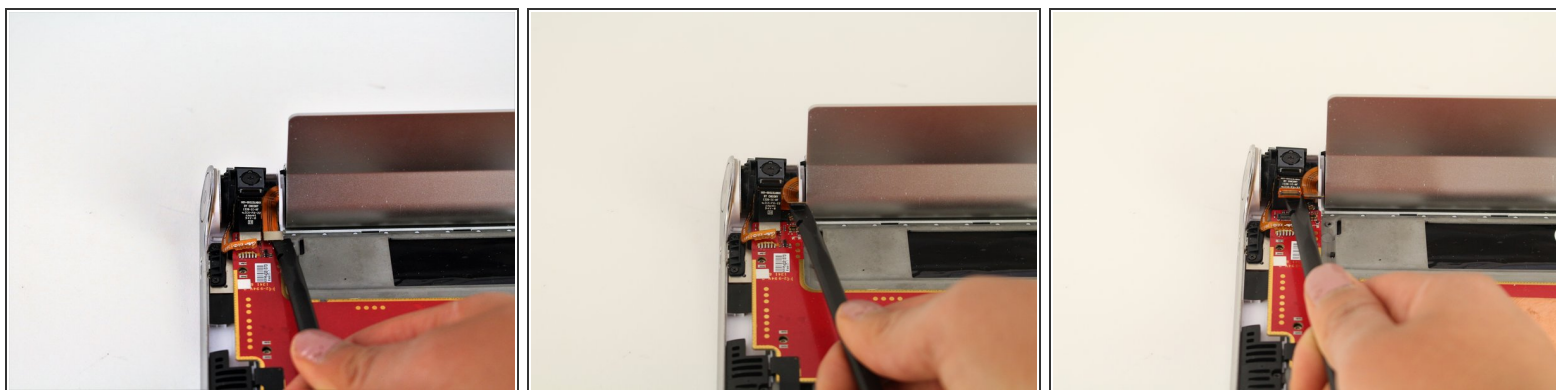
- Use the spudger to reach into the center of the device and pry off the back case by giving it a light force upwards.

Step 4 — Back Camera



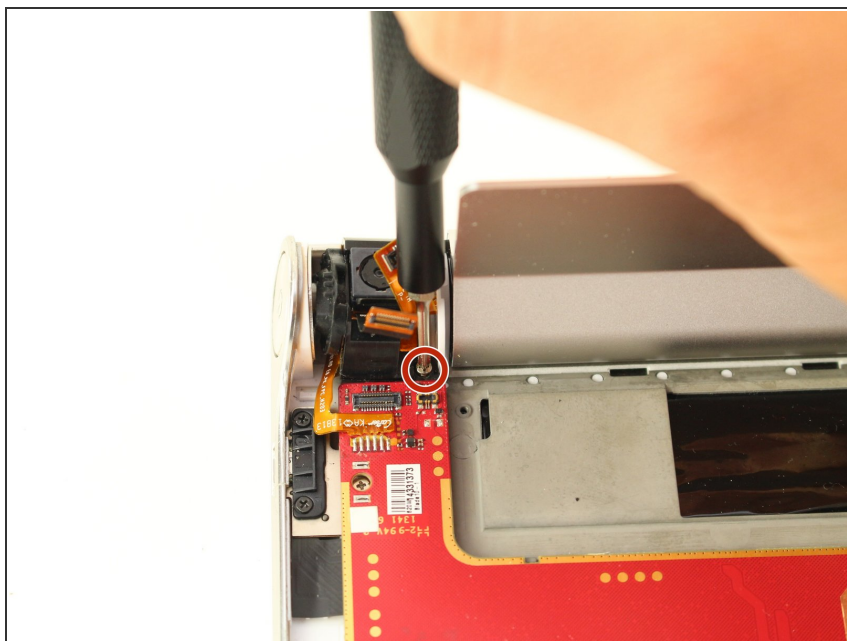
- Remove one 5mm screw using the Phillips #00 Screwdriver.

Step 5



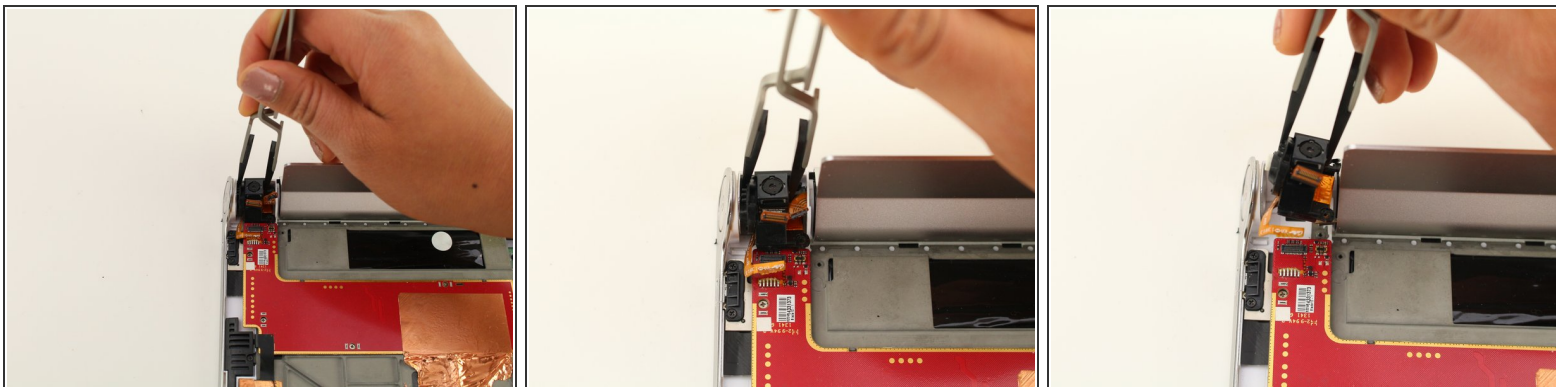
- Use the spudger to disconnect the camera and battery from the printed circuit board by putting the spudger in between the connections and the printed circuit board and pushing the spudger up.

Step 6



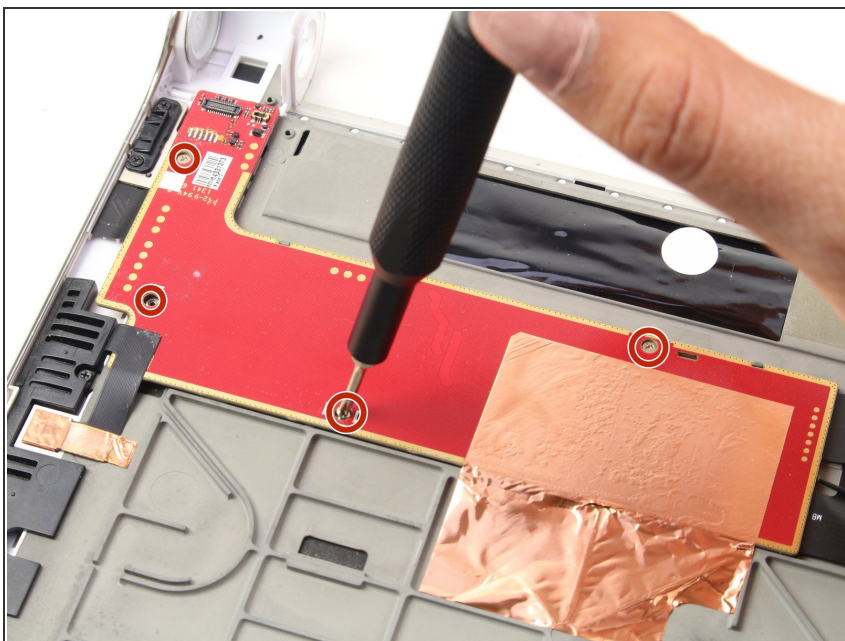
- Remove one 5mm screw with the Phillips #00 screwdriver.

Step 7



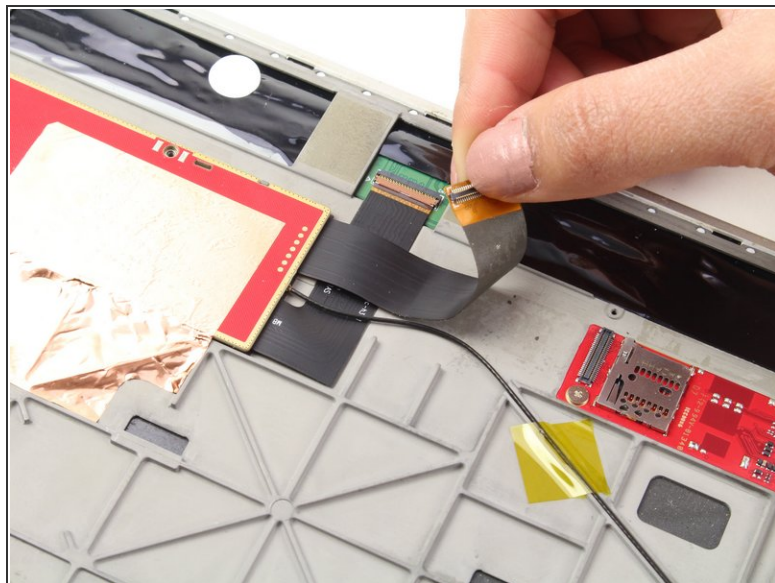
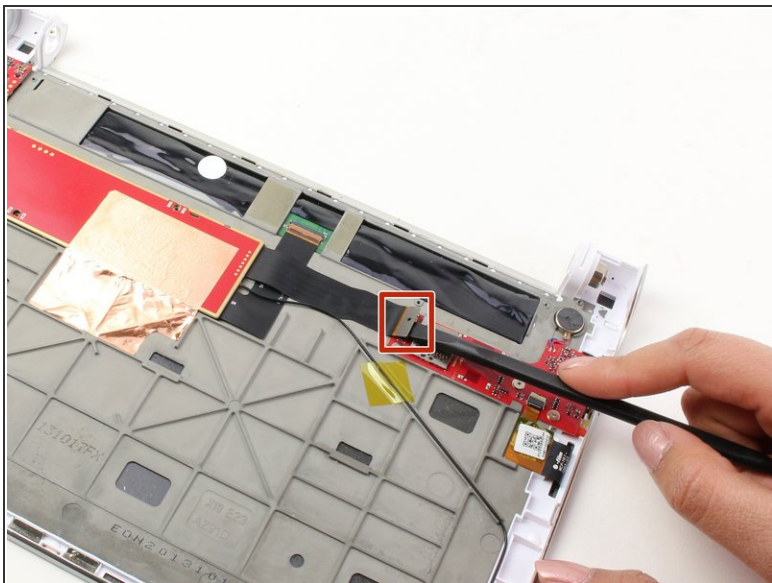
- Use the nylon tip tweezers to push the camera out from between the power button and the kickstand.

Step 8 — Camera PCB



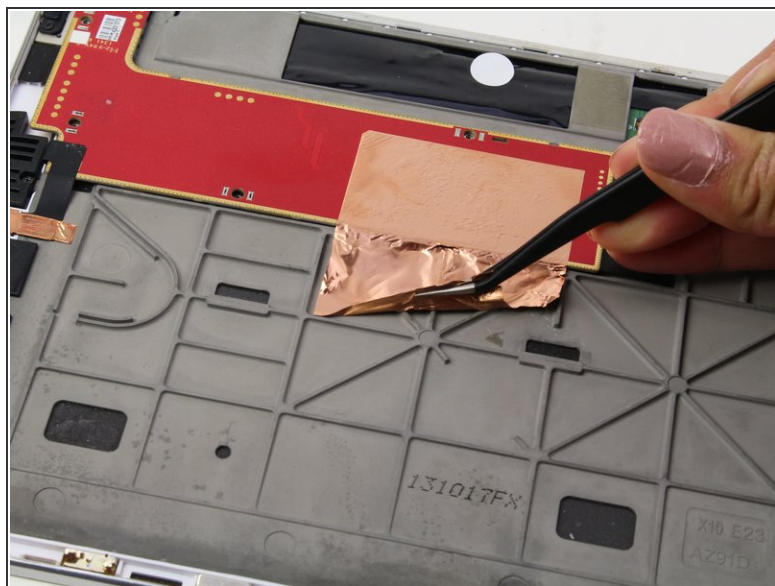
- Remove the four 1 mm screws with a Phillips #00 Screwdriver.

Step 9



- Use a spudger to disconnect the ribbon wire by applying a force upwards.

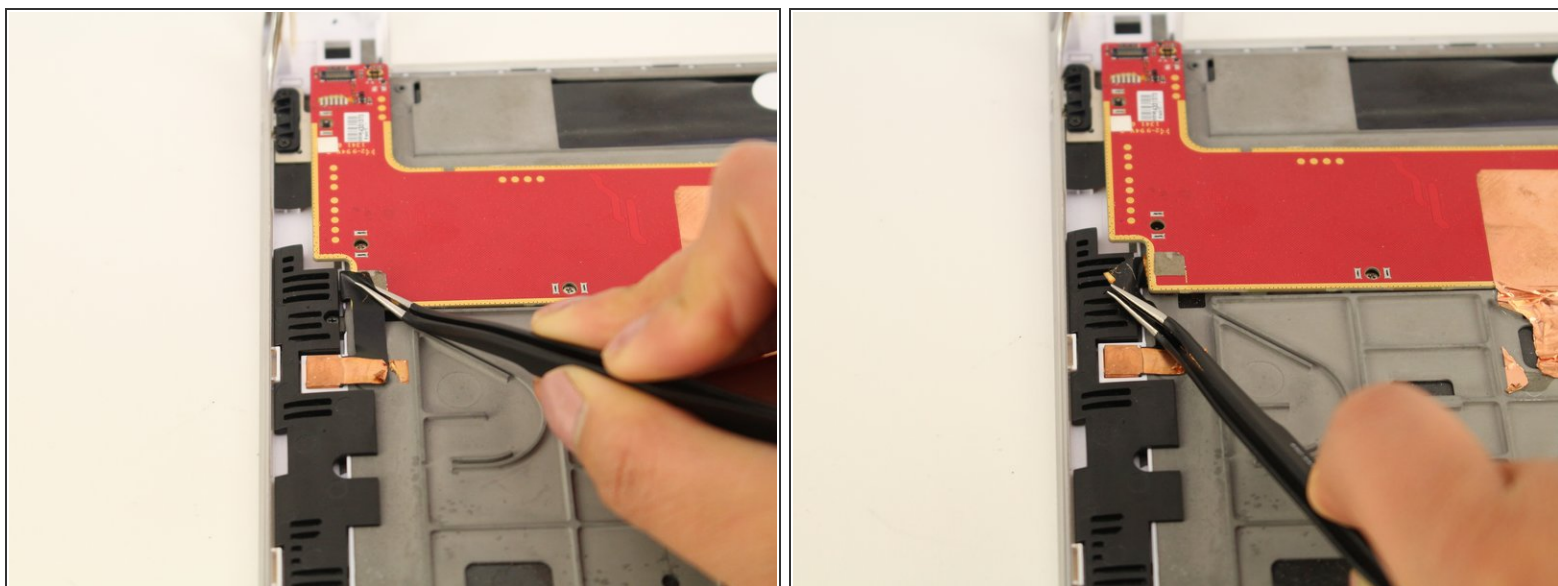
Step 10



- Use tweezers to lift up the foil.

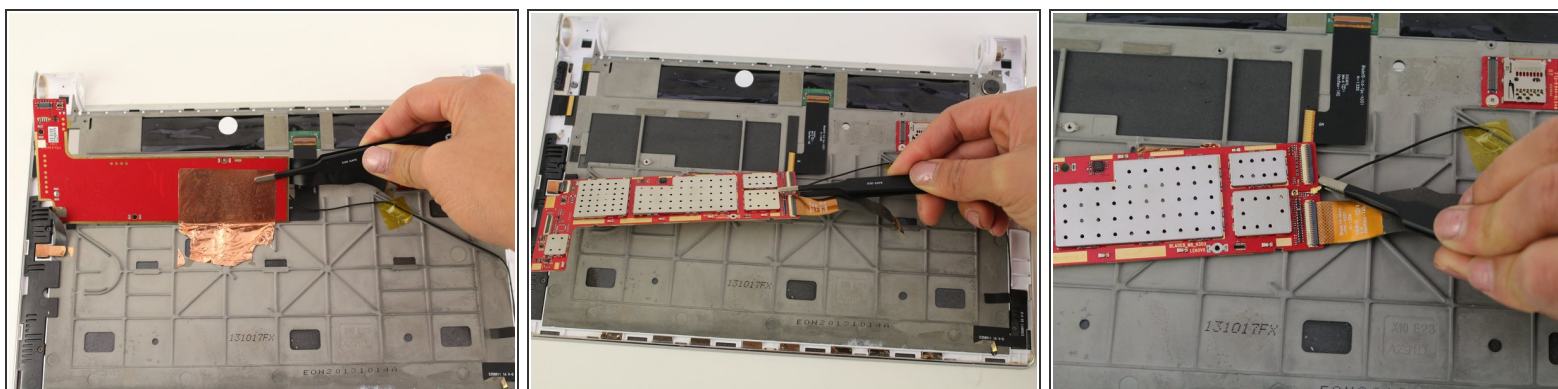
⚠ The foil may tear.

Step 11



- Use the tweezers to lift the black tape from the corner of the printed circuit board.

Step 12



- Flip the board 180 degrees towards you using the tweezers.

To reassemble your device, follow these instructions in reverse order.