



Lenovo Yoga Tablet 2 830-F Display Replacement

Display Replacement Guide for the Lenovo Yoga Tablet 2 830-F

Written By: Mario Gjyli



INTRODUCTION

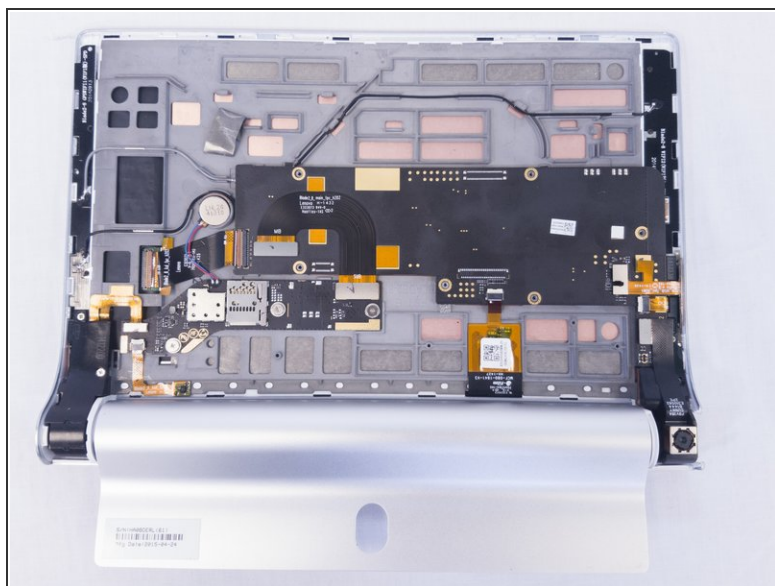
In this guide, there will be a step by step process on how to remove a broken display screen for a Lenovo Yoga Tablet. Each step is done in order to ensure all pieces are taken off correctly without breaking. The time needed for this repair is 40 mins to an hour to complete. The tools needed include a Type #00 screwdriver, a spudger, and some plastic opening tools.



TOOLS:

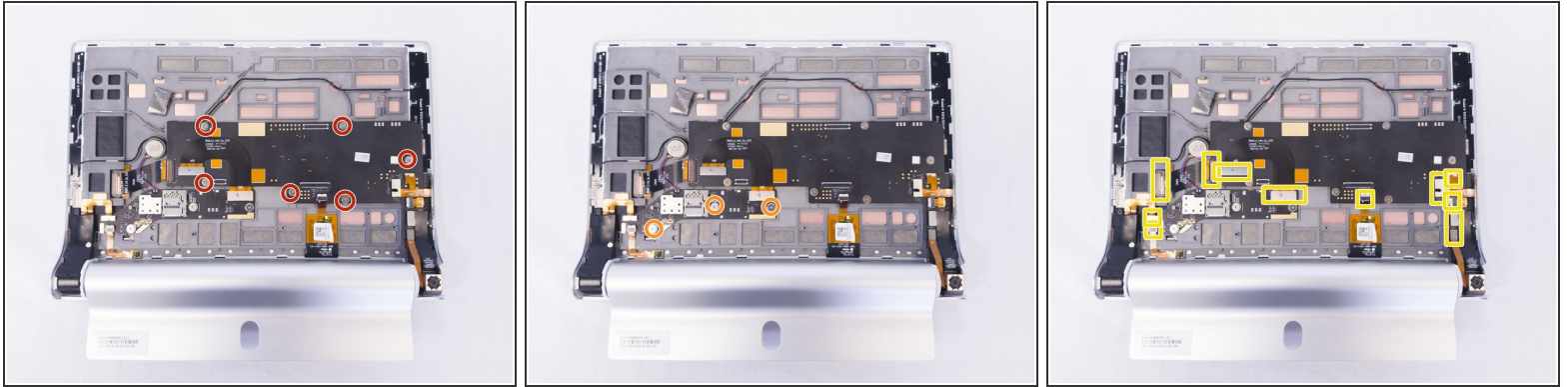
- [Type #00 Phillips head screwdriver](#) (1)
 - [Spudger](#) (1)
 - [iFixit Opening Tools](#) (1)
-

Step 1 — Display



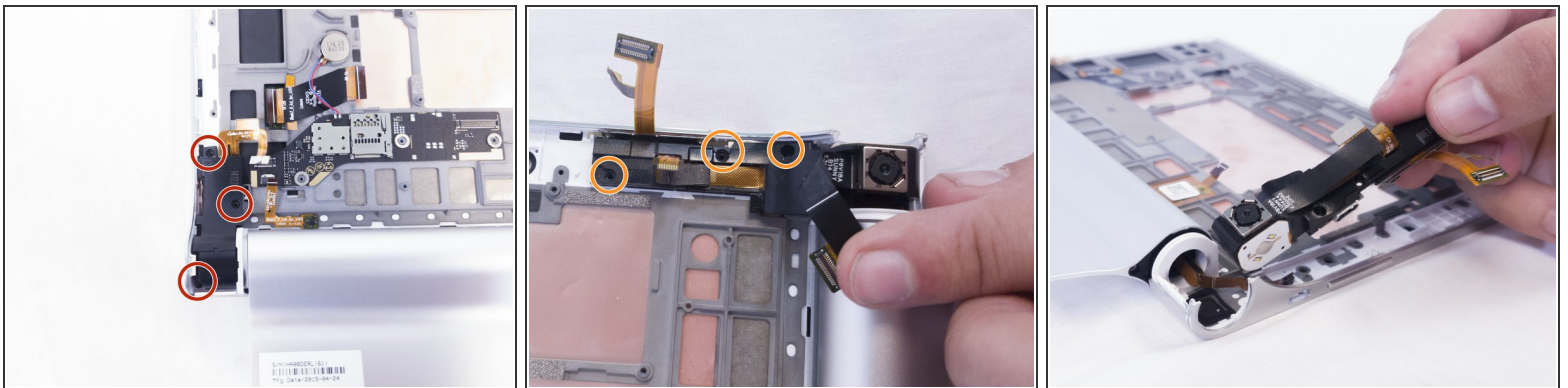
- Remove the three screws on the back of the device with the Phillips Screwdriver #00 bit.
- Using the blue opening tools or spudger, gently remove the back cover to expose the interior of the tablet.

Step 2



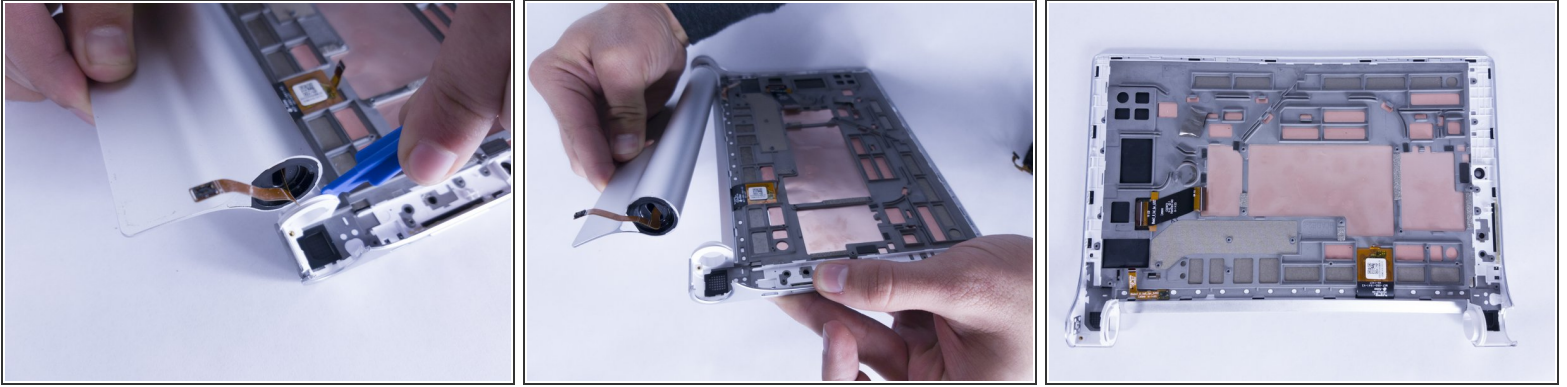
- Remove the six screws on the back of the motherboard with the Phillips Screwdriver #00 bit.
 - Remove the three screws on the back of the secondary board with the Phillips Screwdriver #00 bit.
 - Remove the ribbon cables connecting the boards to the other electrical components
- ⚠ Some of the ribbon cables are secured with clips, simply pry up the clips before sliding them out of the pin connectors.

Step 3



- Remove the three 2mm screws on the back of the left speaker module with the Phillips Screwdriver #00 bit.
 - Remove the three 2mm screws on the back of the right speaker module.
- ⚠ Gently remove both the left and right speaker modules.

Step 4



- Use the blue opening tool to pry the battery compartment off the right hand side of the back.
- ⚠ This may require a decent amount of force to accomplish. If you feel like the white plastic holder will break, try using the spudger at a different angle.
- ⚠ Do not attempt to use the spudger on the right hand side of the device. It must be done on the left side.
- ★ The display and housing for the screen are one piece and would be bought together.

To reassemble your device, follow these instructions in reverse order.