



# Lenovo bluetooth mouse N6901A disassembly

The mouse can be disassembled very easy. The micro switch can be repaired with an OMRON D2FC-F-7N.

Written By: Shinn Chyang Chen





## TOOLS:

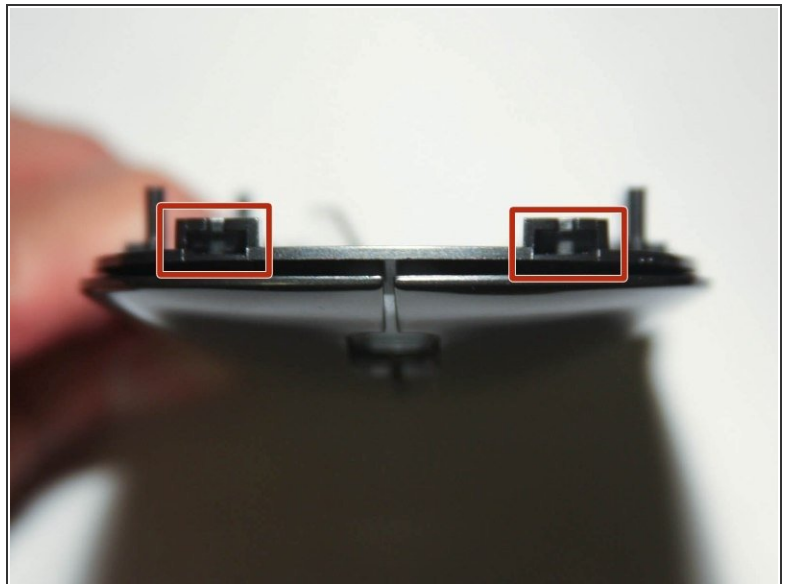
- [Phillips #00 Screwdriver](#) (1)
-

## Step 1 — Mouse



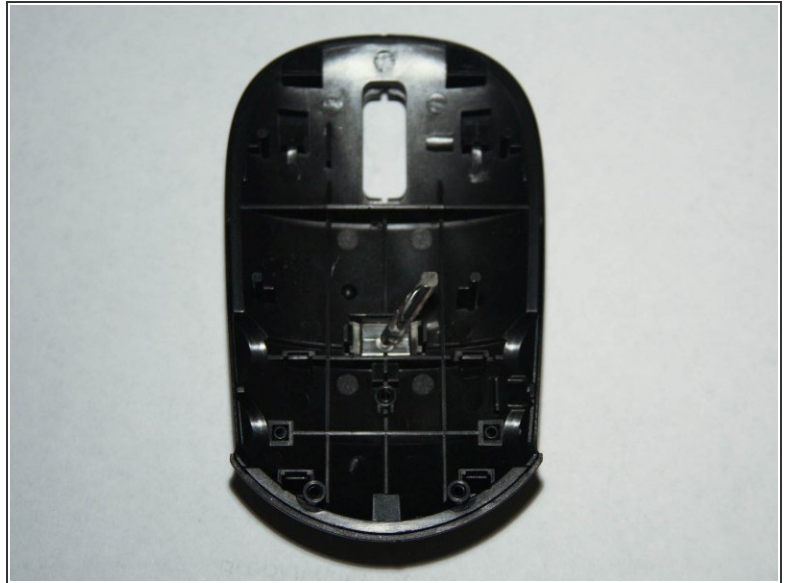
- 3 Phillips screws are located under the battery cover, unscrew them

## Step 2



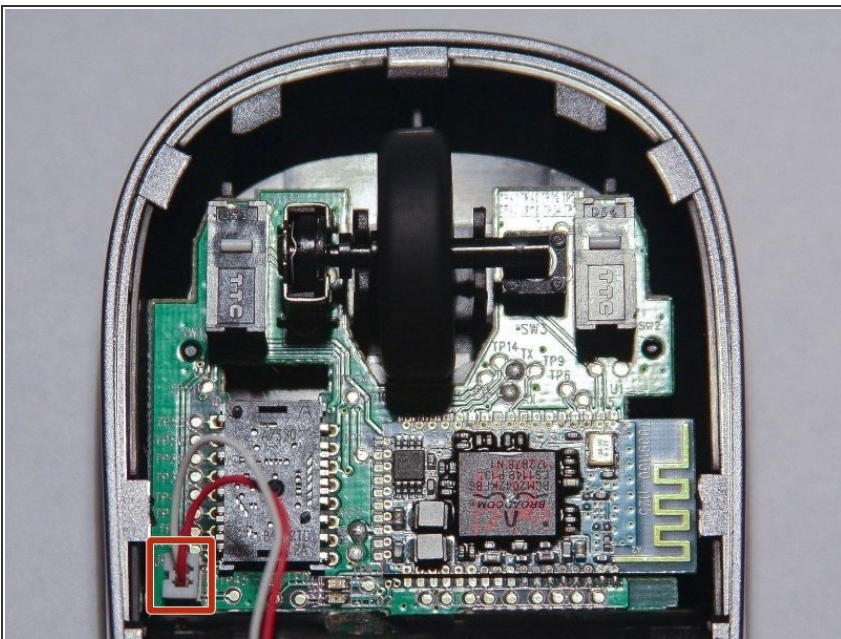
- The mouse cover at the bottom should move freely but at the top is hold by 2 brackets
- In order to remove the mouse cover, you will need to rock left/right the cover and slide it down (from scroll wheel toward the Lenovo logo)


## Step 3



- At this point, you have separated the mouse cover

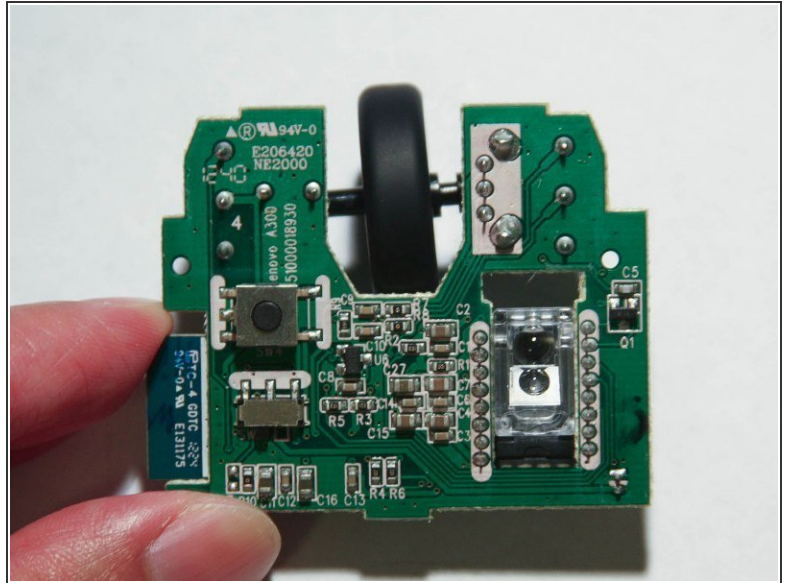
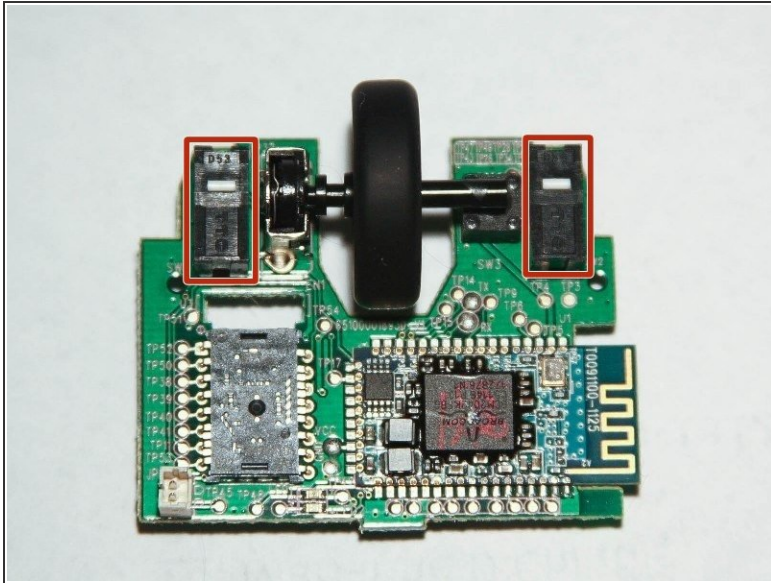
## Step 4



 Use the appropriate tool to remove gently the power connector. Don't use your finger, you might brake the cable



## Step 5



- The micro switch can be replaced by OMRON D2FC-F-7N but you need to trim the solder terminals with a flush wire cutter

⚠ When you reassemble the mouse, make sure you don't crush the power cable

To reassemble your device, follow these instructions in reverse order.