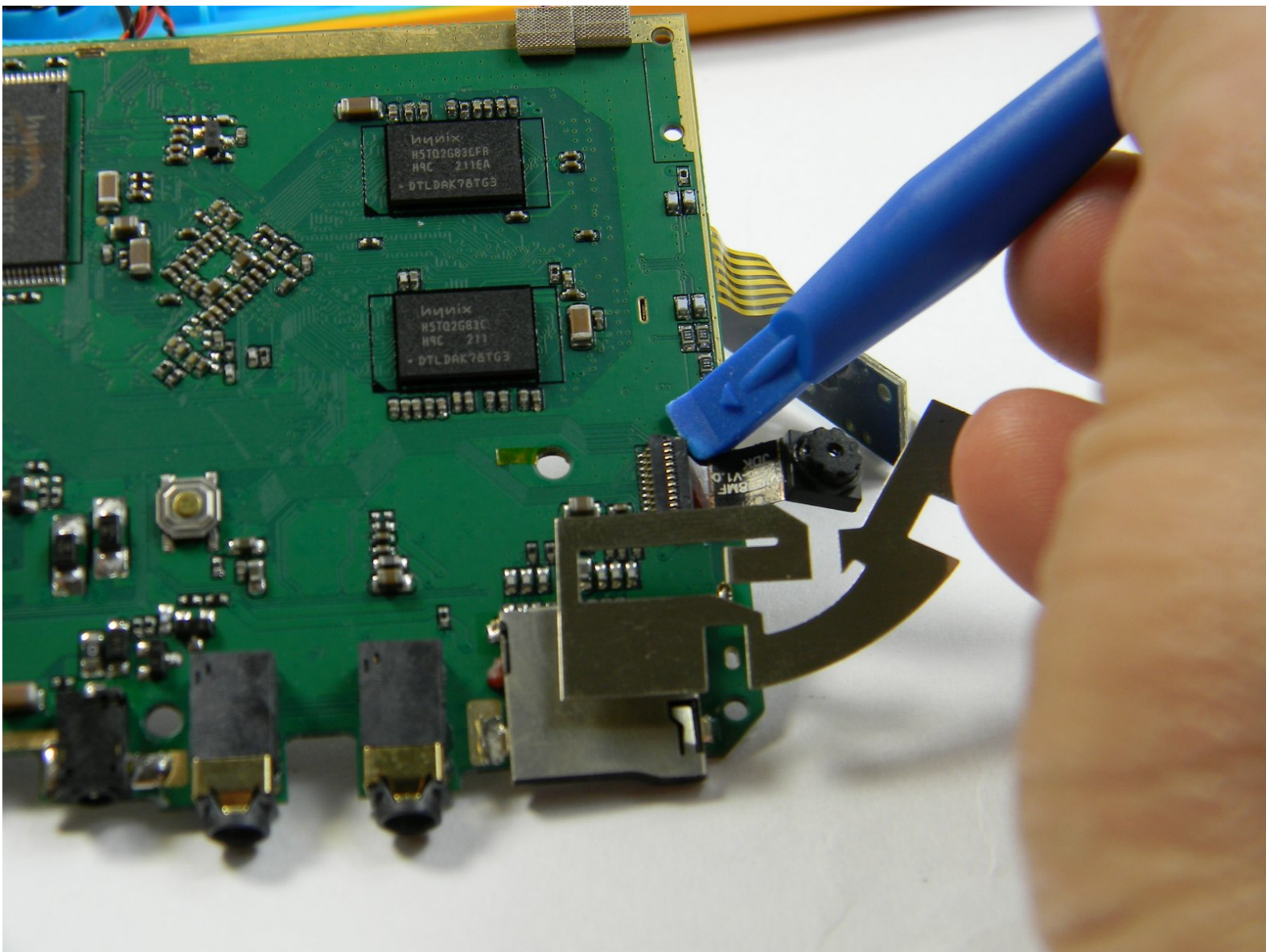




# Lexibook Junior Tablet Camera Replacement

Following this guide will help you remove the camera from the motherboard. The camera does not need to be soldered off to be replaced.

Written By: Rachel Klesius



# INTRODUCTION

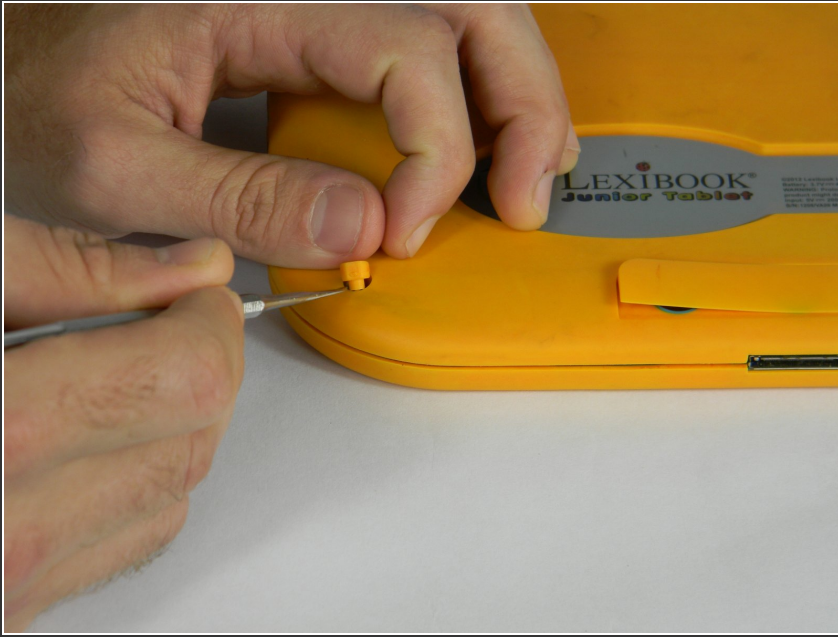
This replacement guide is an intermediate guide that does not require a solder or soldering skills. This does require you to replace the motherboard and the battery, however.



## TOOLS:

- [Soldering Iron](#) (1)
  - [Metal Spudger](#) (1)
  - [Spudger](#) (1)
  - [Phillips #00 Screwdriver](#) (1)
  - [iFixit Opening Tools](#) (1)
-

## Step 1 — Battery



- ⚠ Make sure your device is powered off before replacement to prevent electric shock.
- With the device screen face down, use the metal spudger to remove the small rubber circles on all four corners of the device. The screws should now be revealed.
- Using the metal spudger, pry open the small, long rubber rectangle on the back of the device to reveal more screws.

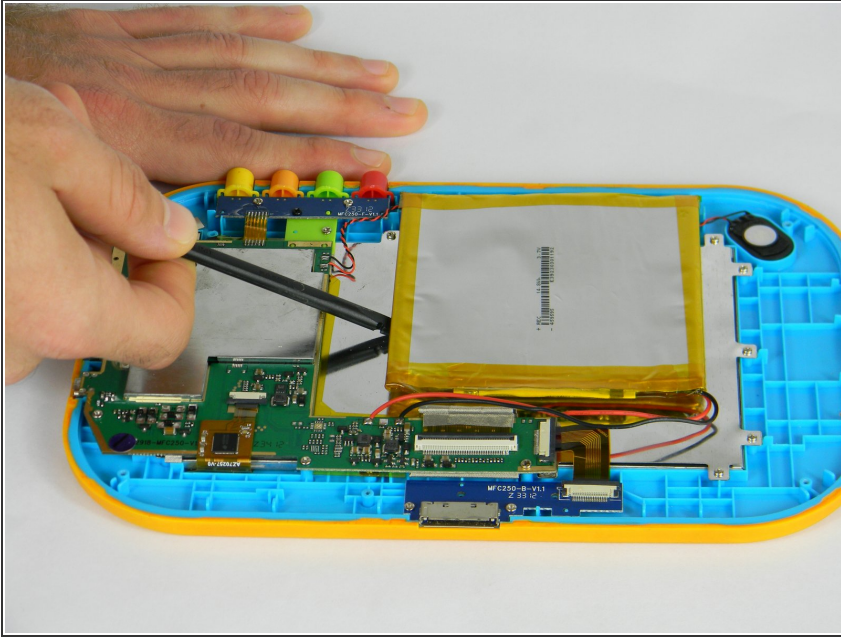
## Step 2



- Using a Phillips #00 screwdriver, remove the four 6.8mm screws from the four corners of the device.
- Using the same screwdriver, remove the three screws that were behind the rubber rectangle. These screws do not come out of the device.
- Use the plastic opening tool to gently pry open the back panel of the tablet.



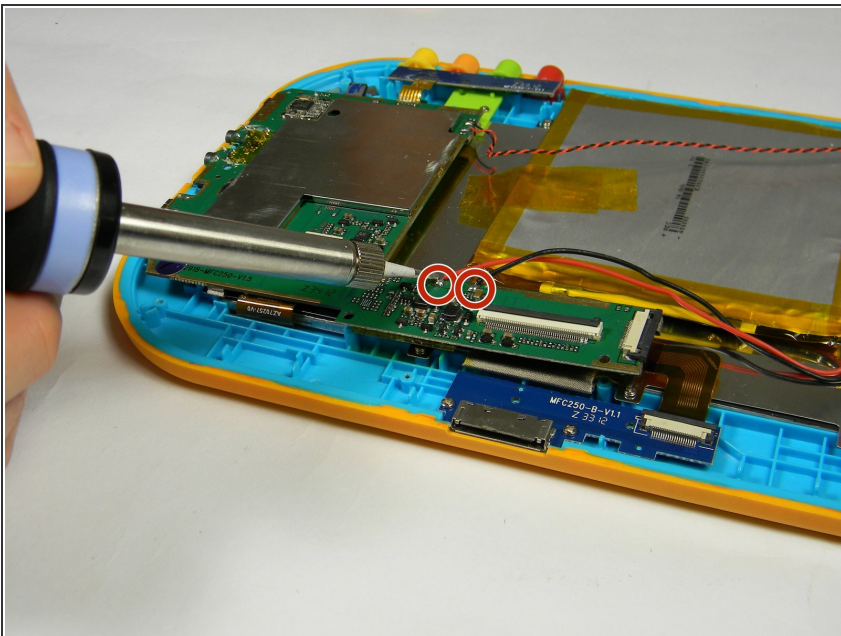
### Step 3



- Use the nylon spudger to gently pry under the battery to remove it.

⚠ Make sure you do not damage the battery or metal plate in this process and only use a nylon spudger. Be patient and work slowly for the best results.

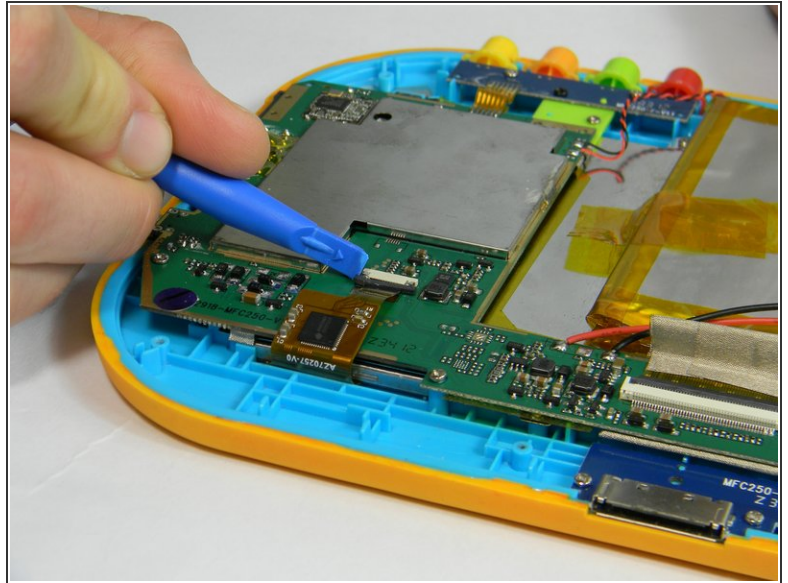
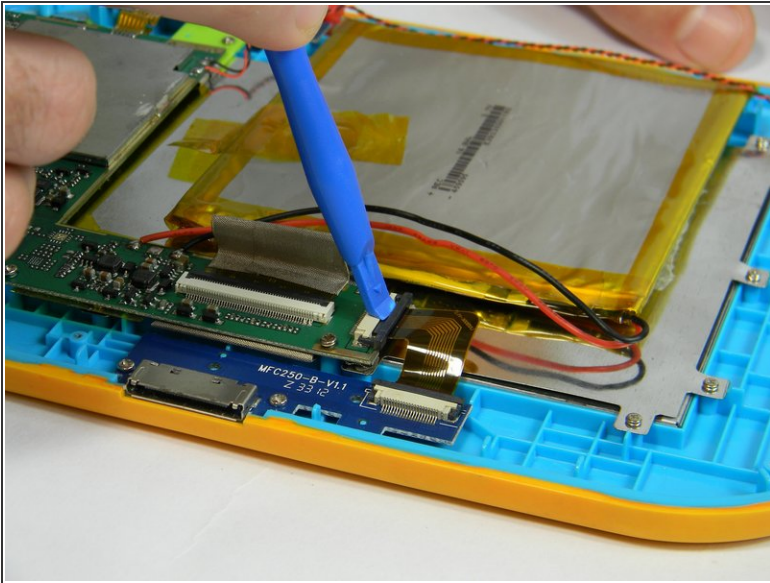
### Step 4



- Use a soldering iron to remove the battery from the motherboard safely.

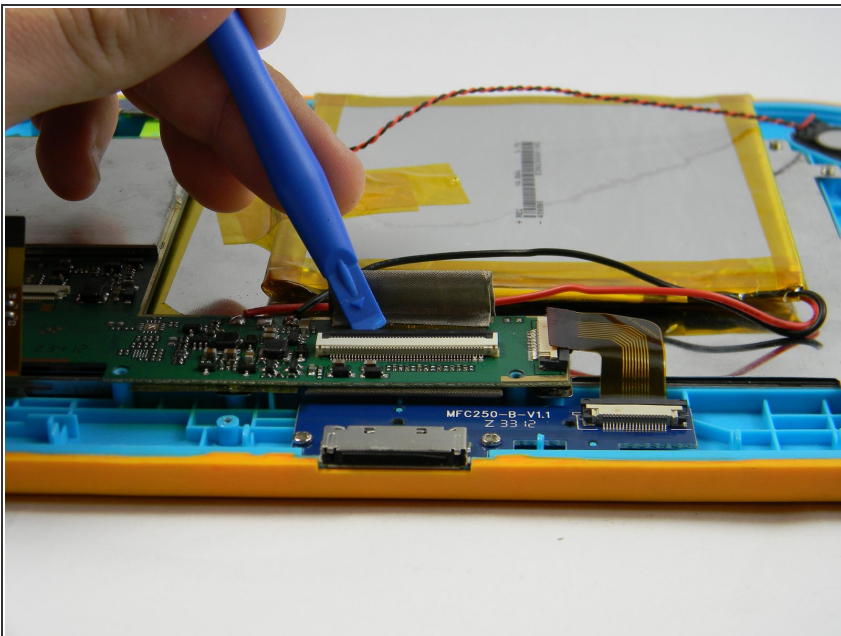
ⓘ For advice on how to solder, check out [iFixit's Soldering Guide](#).

## Step 5 — Motherboard



- Using the plastic opening tool, gently push the two small, black and white switches out in the direction of the ribbon wires.
- Slowly pull the ribbon wire out of the switch to free it.

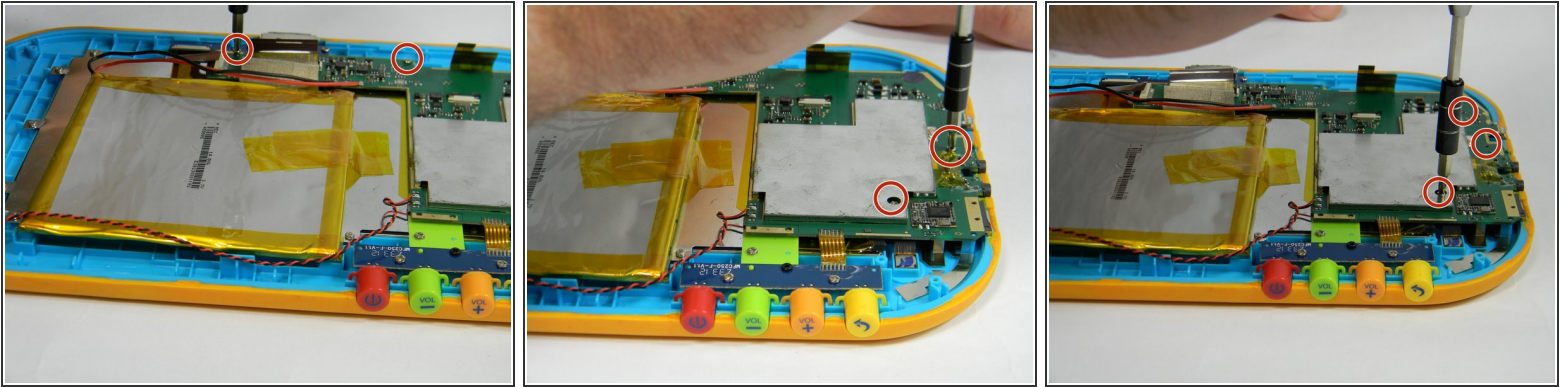
## Step 6



- Push the larger black and white strip leading to a ribbon wire upward using the plastic opening tool.
- Carefully pull the ribbon wire out of the switch

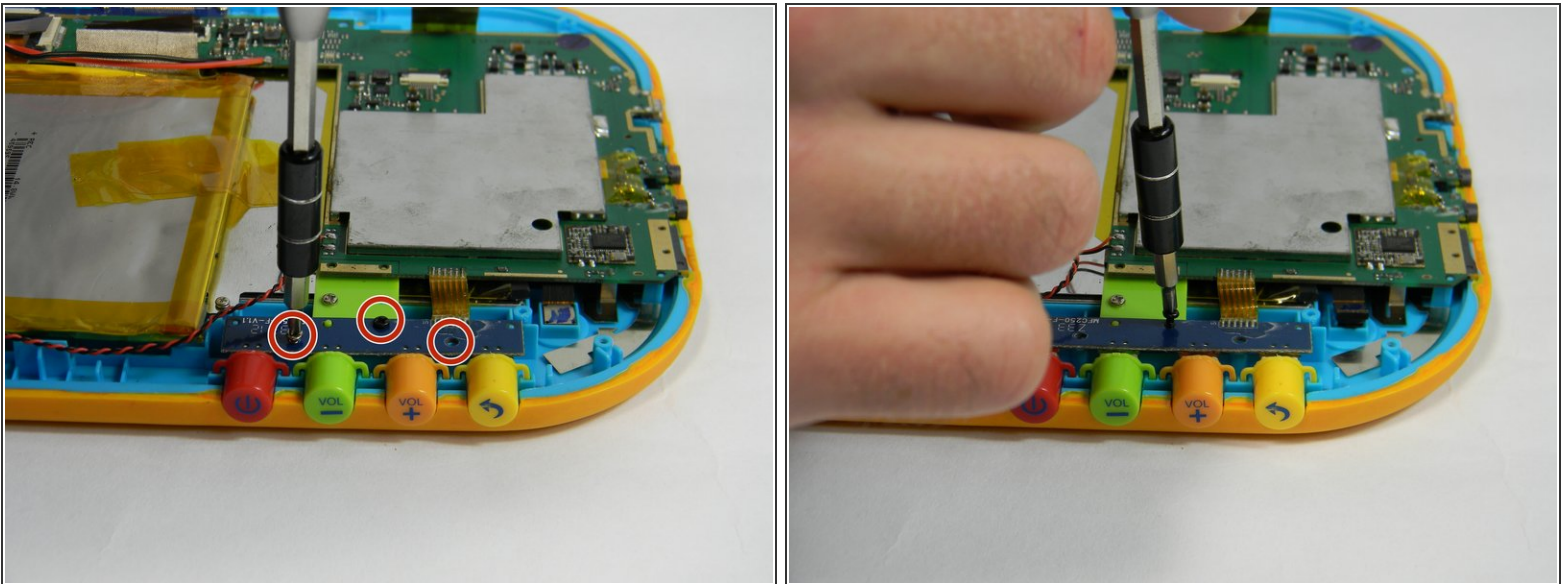


## Step 7



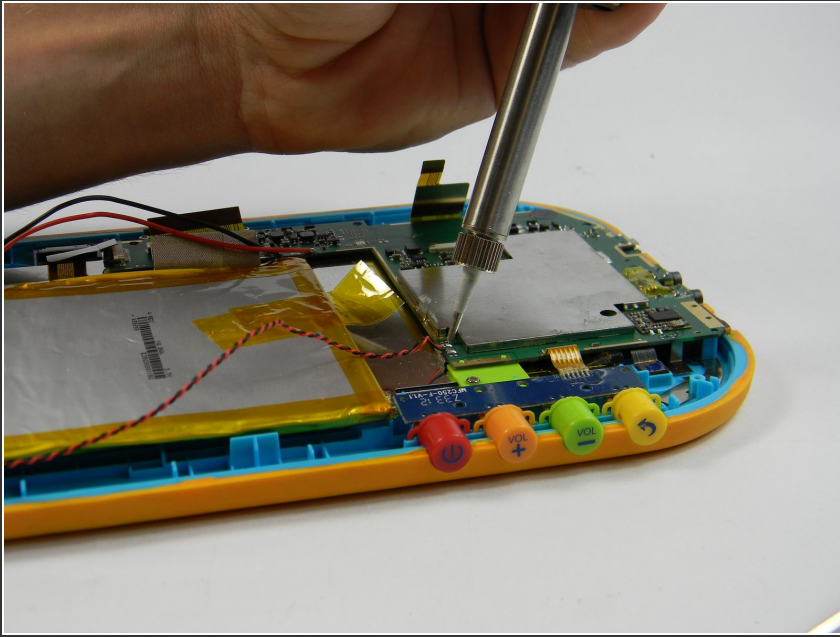
- Unscrew the five 4 mm screws around the perimeter of the motherboard using the ph00 size phillips head screwdriver.

## Step 8



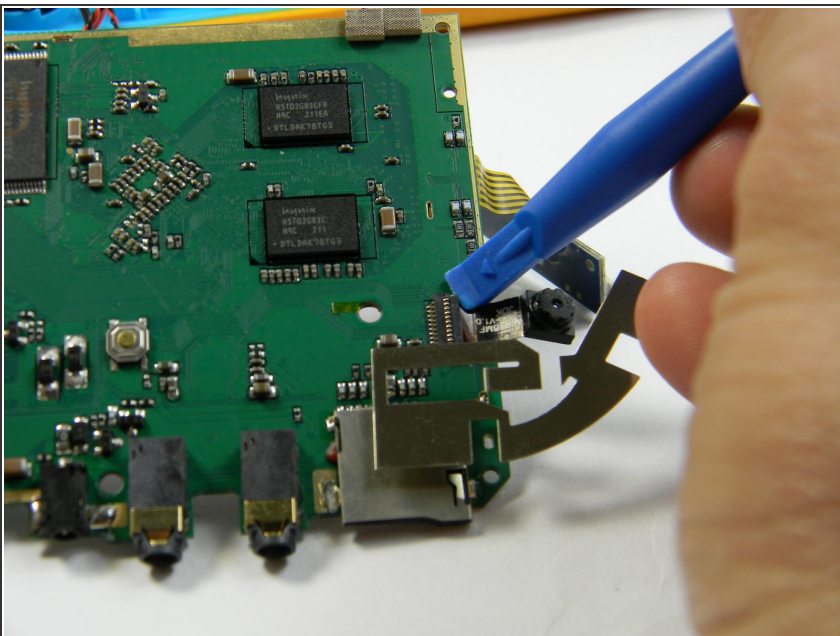
- Remove the button board by unscrewing two more 4 mm screws and one 6.5 mm screw

## Step 9



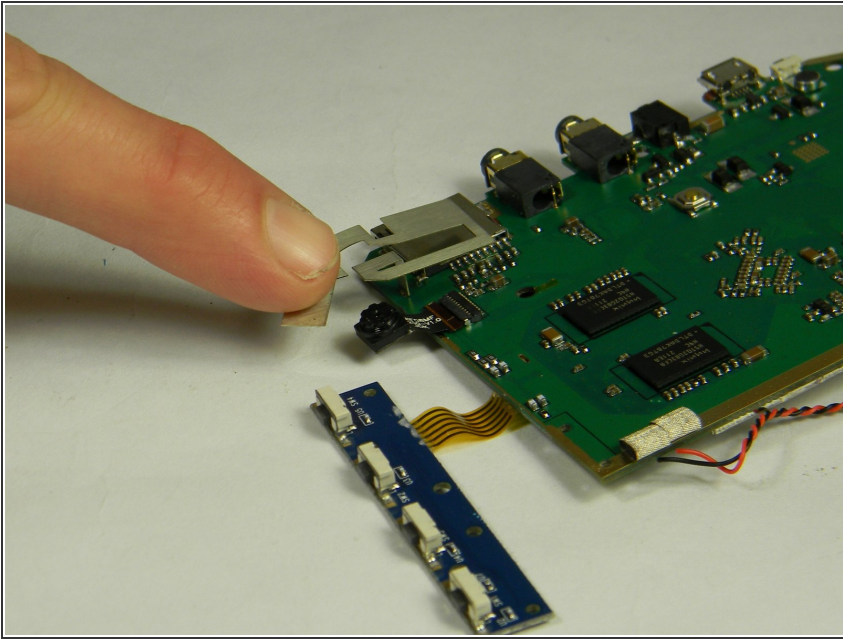
- Solder off connections from the wire connecting the motherboard to the speaker.
- ① For how to solder, check out [iFixit's Soldering Guide](#).

## Step 10 — Camera



- Using the plastic opening tool, pop up the black and white clip holding the ribbon wire in place for the camera.
- ① This black and white clip removes in the same way that the large clip on the motherboard does.

## Step 11



- Gently slide out the ribbon wire connecting the camera to the motherboard.

To reassemble your device, follow these instructions in reverse order.