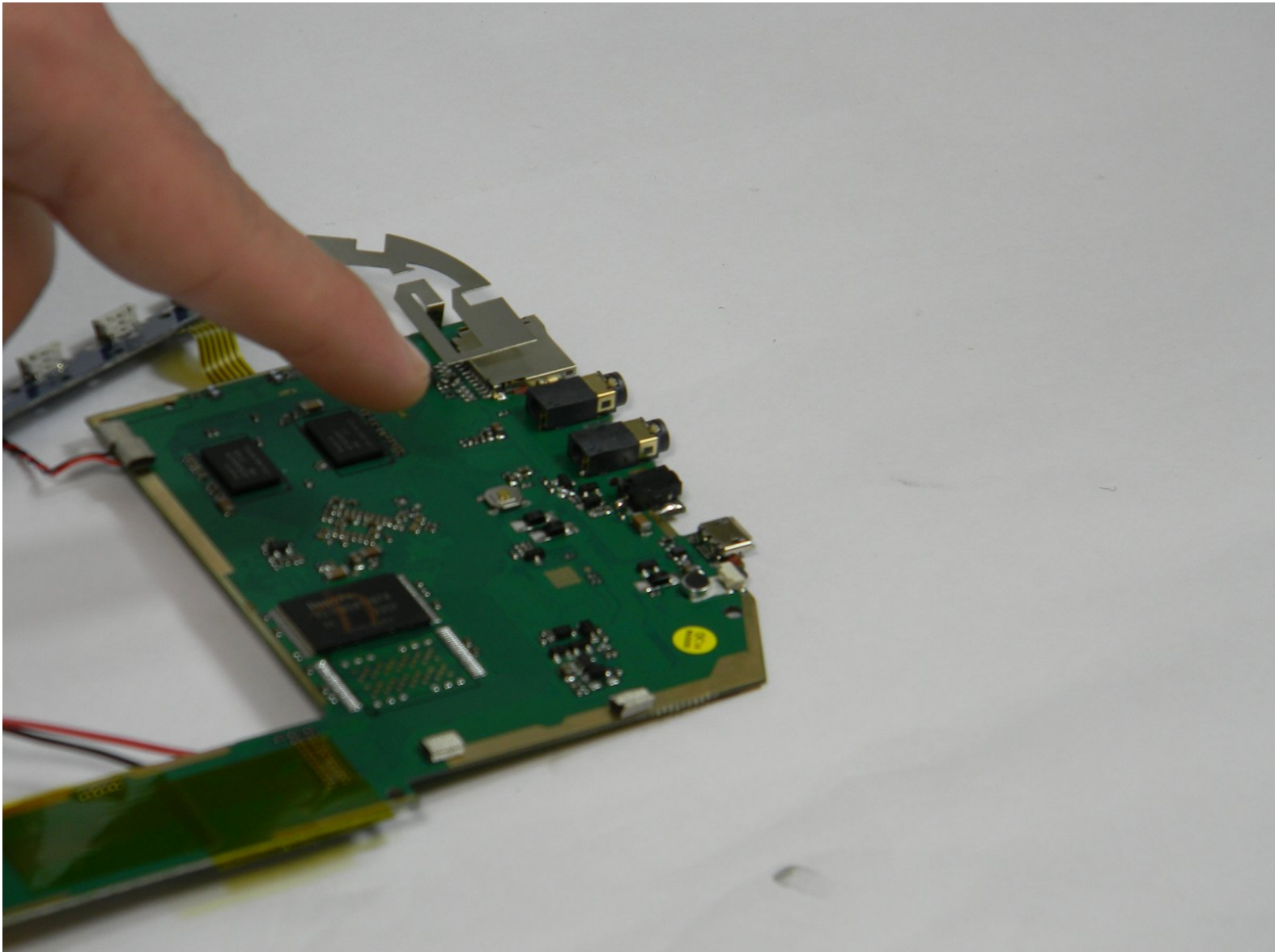




Lexibook Junior Tablet Charging Port Replacement

This guide removes the charging port and will help restore power to your tablet if it will not charge.

Written By: Rachel Klesius



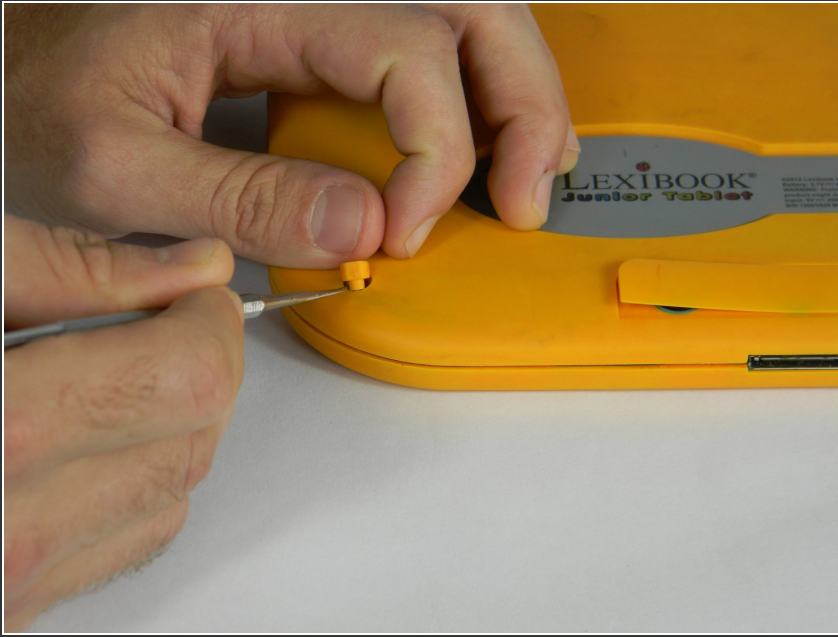
INTRODUCTION

This guide requires soldering skills and the removal of both the battery and the motherboard. This is one of the harder guides.

TOOLS:

- [Metal Spudger](#) (1)
 - [Spudger](#) (1)
 - [Phillips #00 Screwdriver](#) (1)
 - [iFixit Opening Tools](#) (1)
 - [Soldering Iron](#) (1)
-

Step 1 — Battery



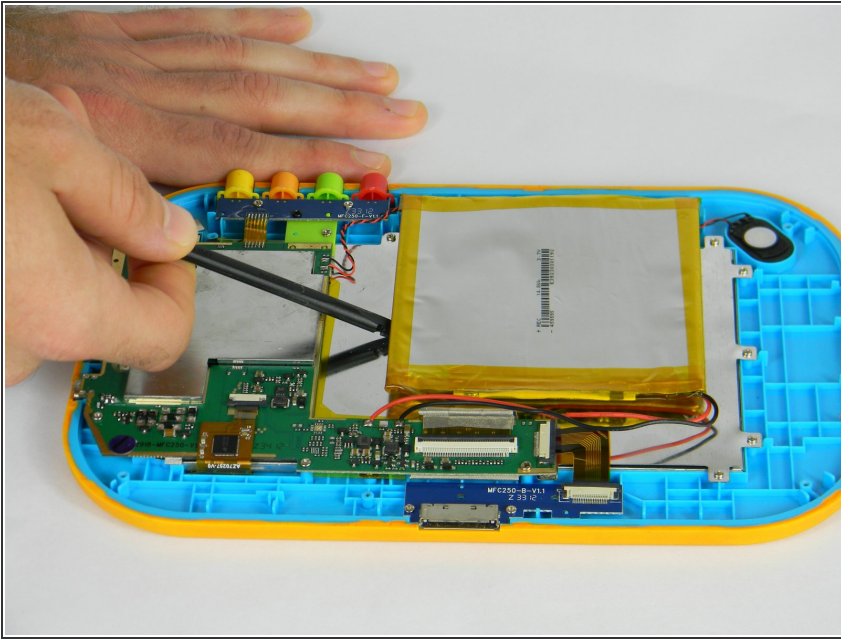
- ⚠ Make sure your device is powered off before replacement to prevent electric shock.
- With the device screen face down, use the metal spudger to remove the small rubber circles on all four corners of the device. The screws should now be revealed.
- Using the metal spudger, pry open the small, long rubber rectangle on the back of the device to reveal more screws.

Step 2



- Using a Phillips #00 screwdriver, remove the four 6.8mm screws from the four corners of the device.
- Using the same screwdriver, remove the three screws that were behind the rubber rectangle. These screws do not come out of the device.
- Use the plastic opening tool to gently pry open the back panel of the tablet.

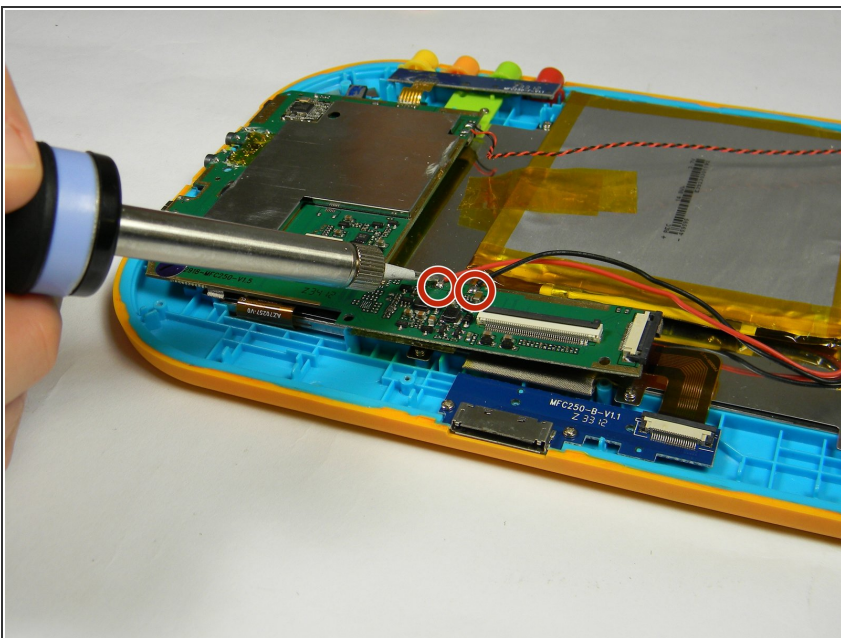
Step 3



- Use the nylon spudger to gently pry under the battery to remove it.

⚠ Make sure you do not damage the battery or metal plate in this process and only use a nylon spudger. Be patient and work slowly for the best results.

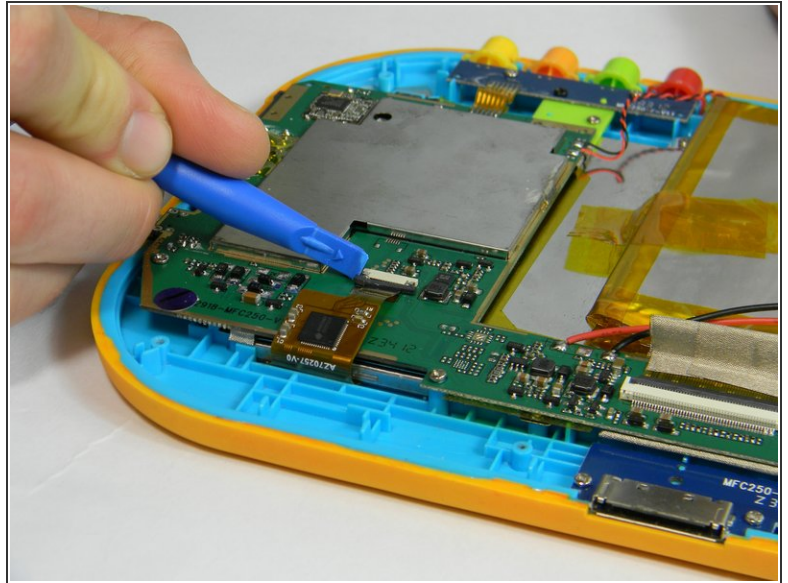
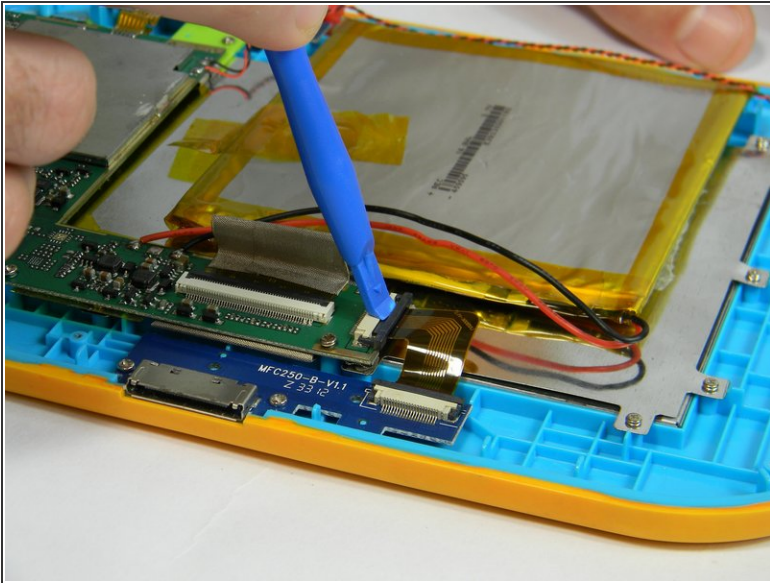
Step 4



- Use a soldering iron to remove the battery from the motherboard safely.

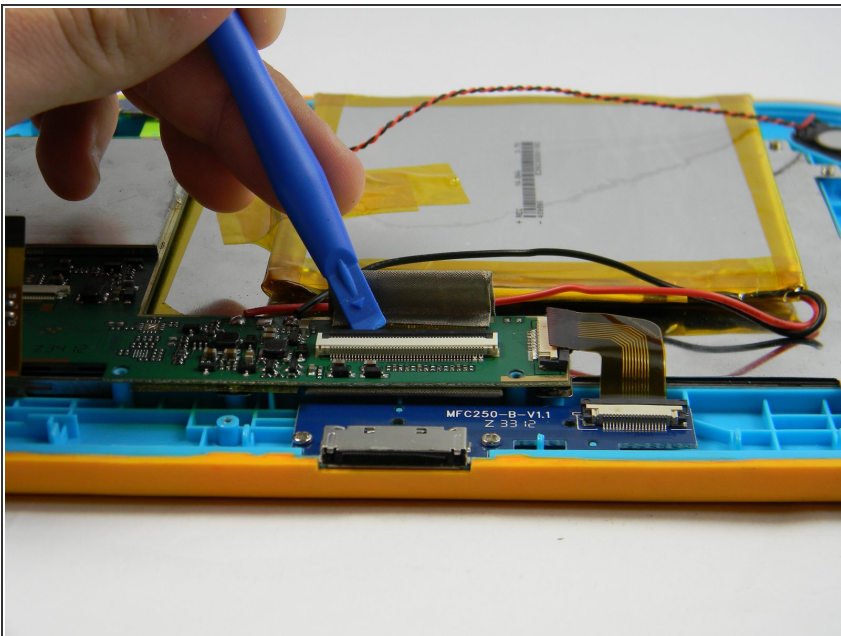
ⓘ For advice on how to solder, check out [iFixit's Soldering Guide](#).

Step 5 — Motherboard



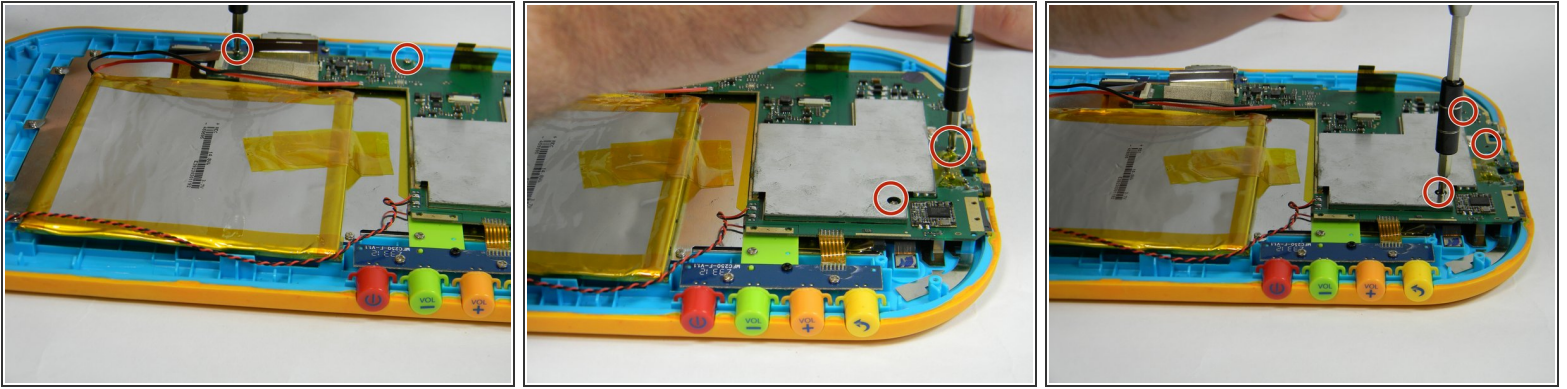
- Using the plastic opening tool, gently push the two small, black and white switches out in the direction of the ribbon wires.
- Slowly pull the ribbon wire out of the switch to free it.

Step 6



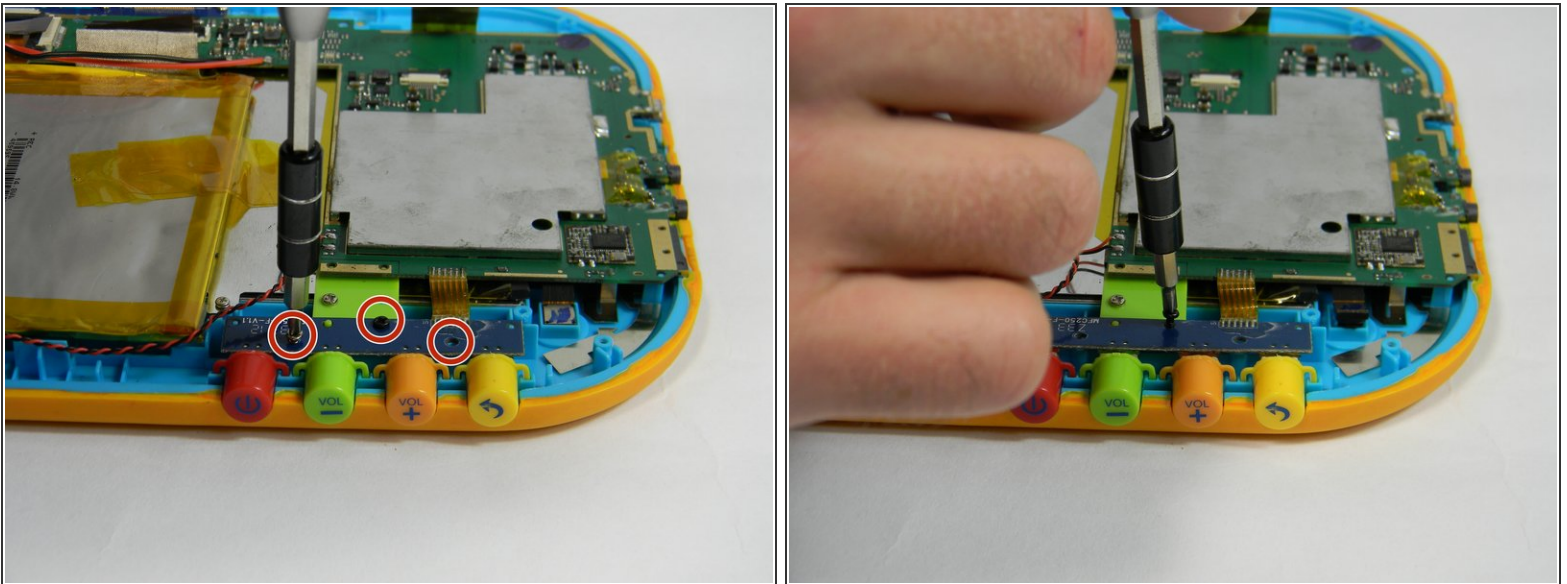
- Push the larger black and white strip leading to a ribbon wire upward using the plastic opening tool.
- Carefully pull the ribbon wire out of the switch

Step 7



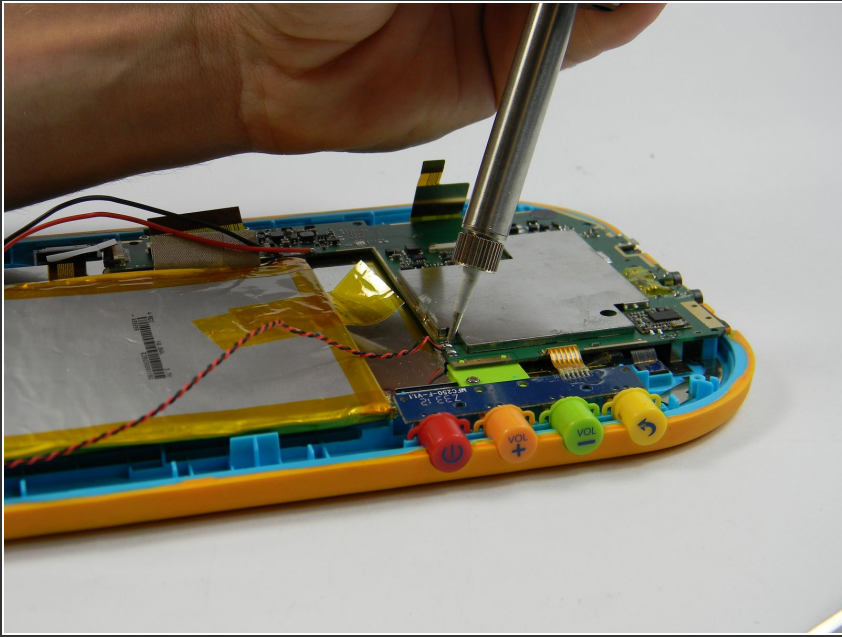
- Unscrew the five 4 mm screws around the perimeter of the motherboard using the ph00 size Phillips head screwdriver.

Step 8



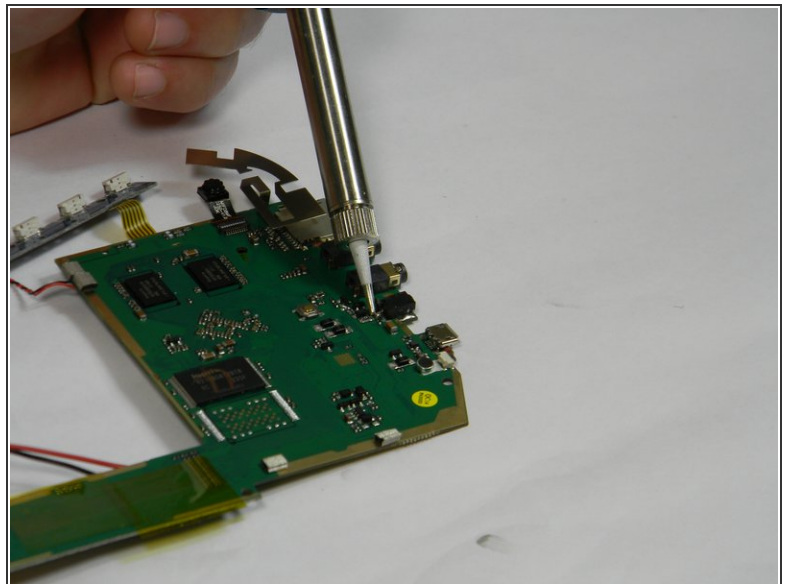
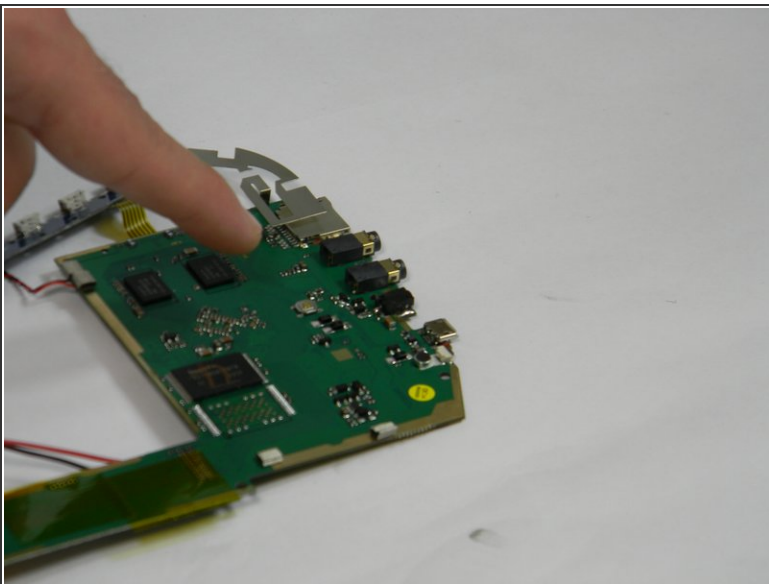
- Remove the button board by unscrewing two more 4 mm screws and one 6.5 mm screw

Step 9



- Solder off connections from the wire connecting the motherboard to the speaker.
- ① For how to solder, check out [iFixit's Soldering Guide](#).

Step 10 — Charging Port



- Solder off the connections to the charging port.
- ① For how to solder, check out [iFixit's Soldering Guide](#)

To reassemble your device, follow these instructions in reverse order.