



Lexmark Intuition S505 Scanner Unit Replacement

This guide will inform readers how to install the scanner unit of the printer.

Written By: Raymond



INTRODUCTION

The scanner unit allows users to scan copies.



TOOLS:

- [Tweezers](#) (1)
 - [Phillips #2 Screwdriver](#) (1)
 - [iFixit Opening Tools](#) (1)
-

Step 1 — Duplex Unit



- Hold the button down with the flat end away from the printer. When you hear a click, the duplex unit can be removed from the printer.

Step 2



- Remove the duplex unit from the back of the printer with the duplex unit facing up.

Step 3 — Scanner Unit



- Locate the two screw holes that connect the two cylindrical extensions from the top portion of the scanner unit to the printer.

Step 4



- Unscrew the two size#6 (5-mm head) Phillips 1-mm screws connecting the scanner unit to the printer.

Step 5



- Raise and close the scanner unit to observe that the hinges lock in place when lifted.

Step 6



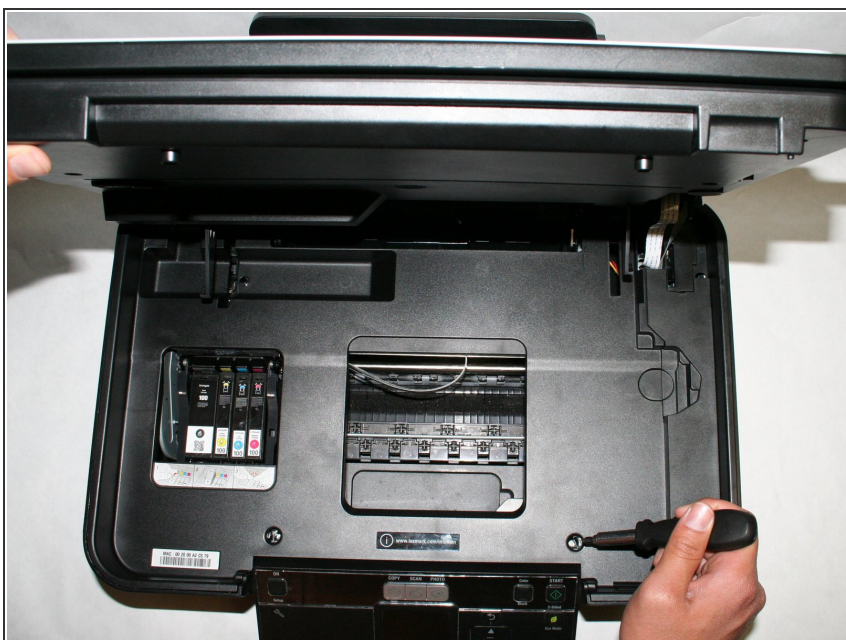
- Firmly press the hinges inward toward the middle of the printer on both sides at the same time. The hinges should be easily lifted up and removed.

Step 7



- Locate the three screws connecting the plastic tray to the printer.

Step 8



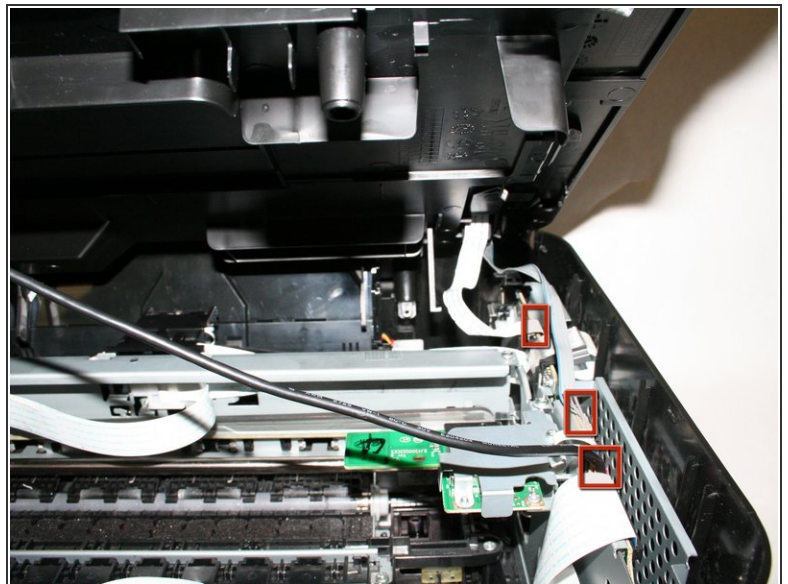
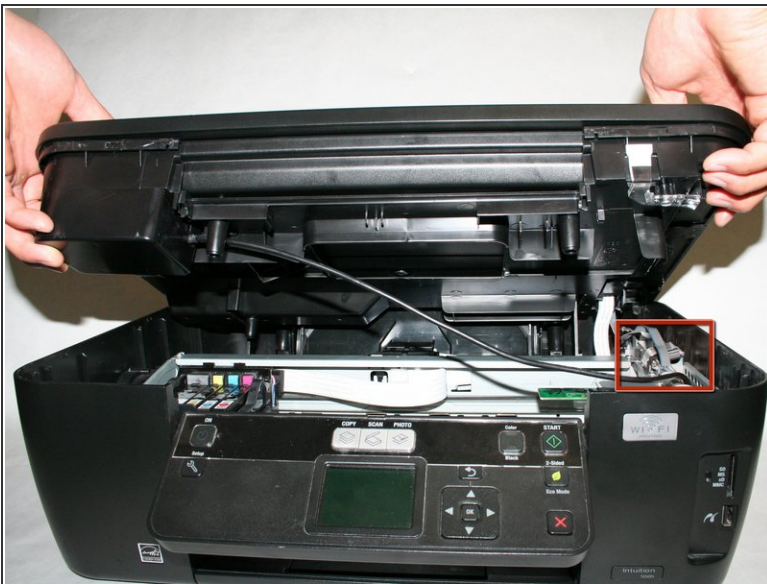
- Remove the three size#6 (5-mm head) Phillips 1-mm screws connecting the scanner unit to the printer.

Step 9



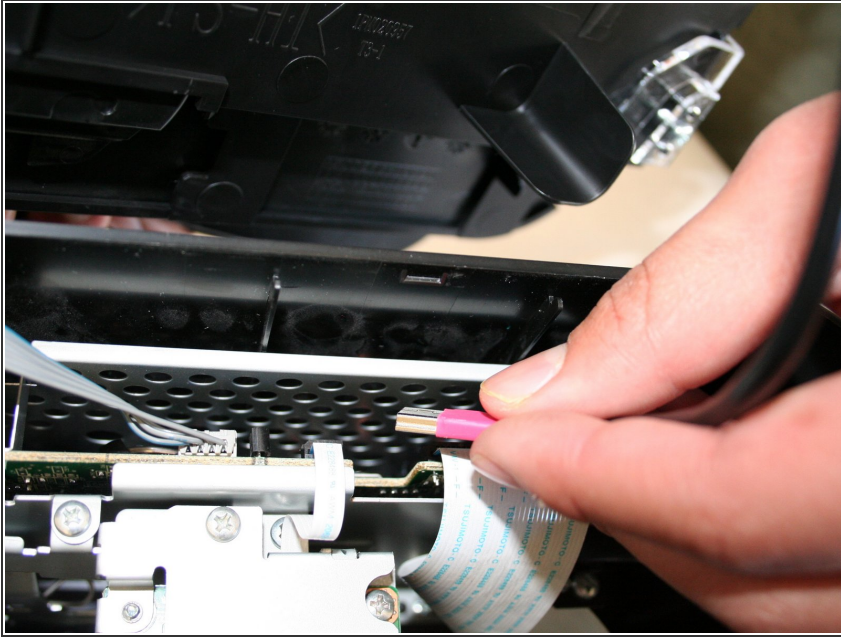
- Remove the plastic cover by unlocking the plastic hinges at the inside edges of the printer. Use a plastic opening tool or a tweezer to slowly move in between the crease around the printer to unlock it.

Step 10



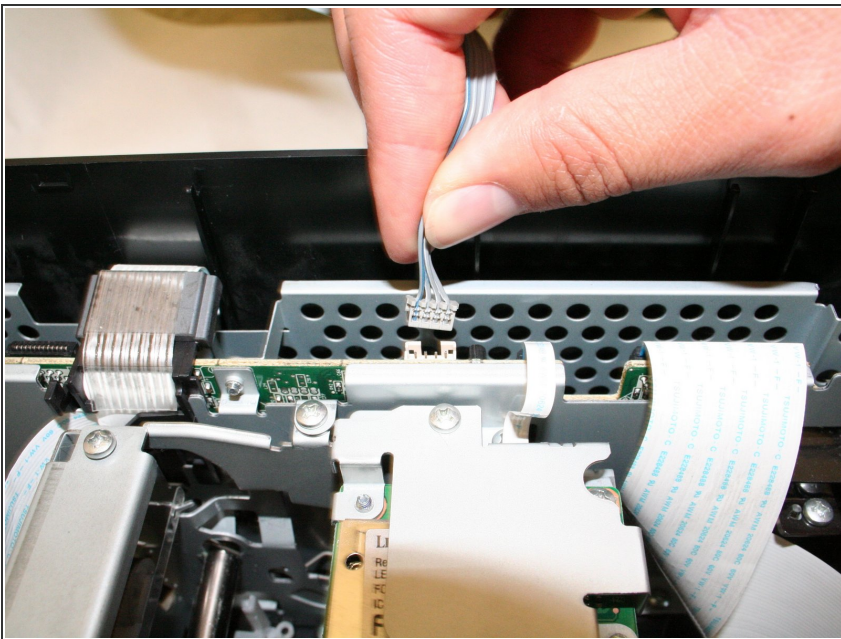
- Slowly raise, but do not remove the plastic cover with the scanner unit so that it exposes the three cables connecting the scanner unit to the printer.

Step 11



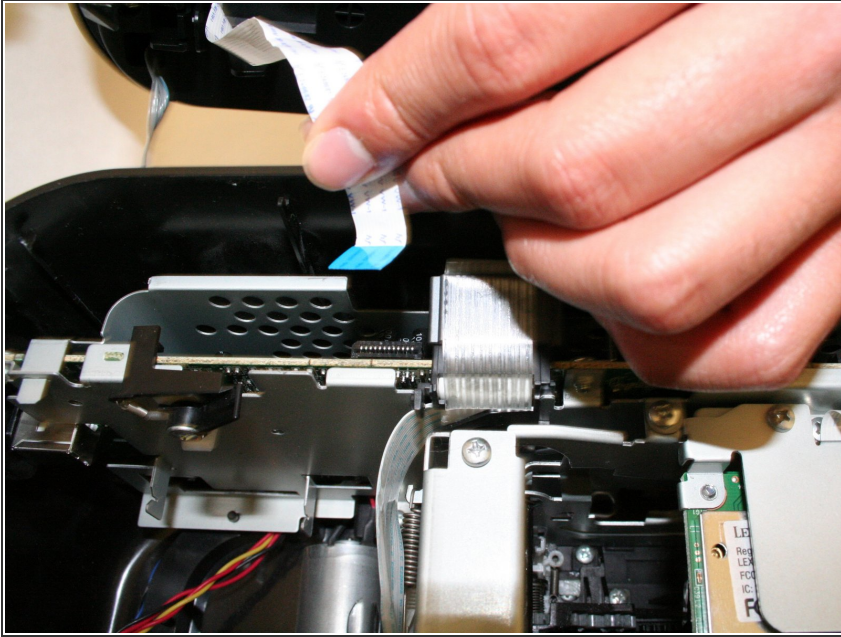
- Carefully unplug the pink cable.

Step 12



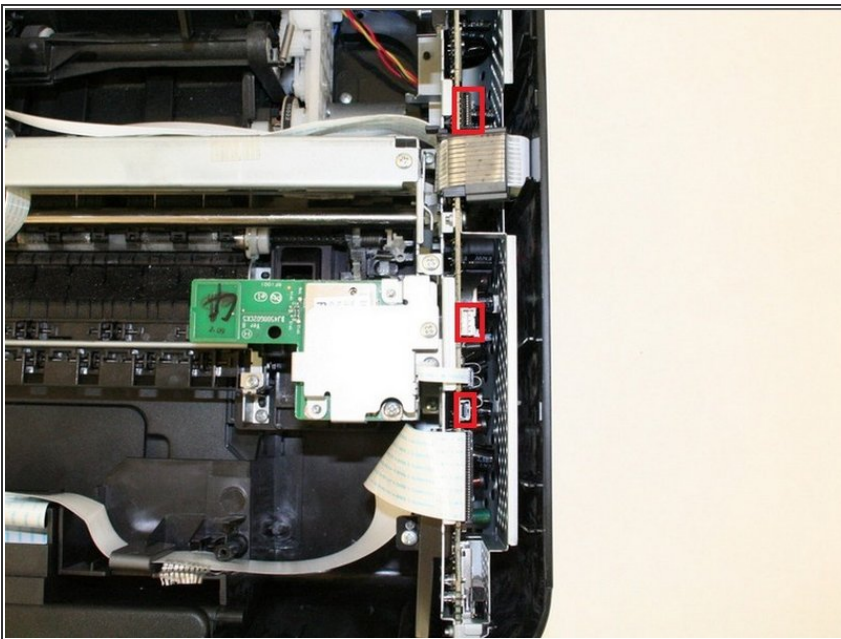
- Carefully unplug the gray data cable.

Step 13



- Carefully unplug the white ribbon data cable.

Step 14




- Locate the three ports for the cables from the scanner unit and make sure they are unplugged.

Step 15



- Remove the scanner unit with the plastic cover by lifting it up from the bottom portion of the printer.

 Be careful with the paper tray and make sure it is evenly lifted through the rectangular hole in the plastic tray

To reassemble your device, follow these instructions in reverse order.