



Lexmark Z11 Teardown

How to open the Lexmark Z11 inkjet printer and get access to the hardware under the hood.

Written By: raumschaum





TOOLS:

- [Phillips #1 Screwdriver](#) (1)
-

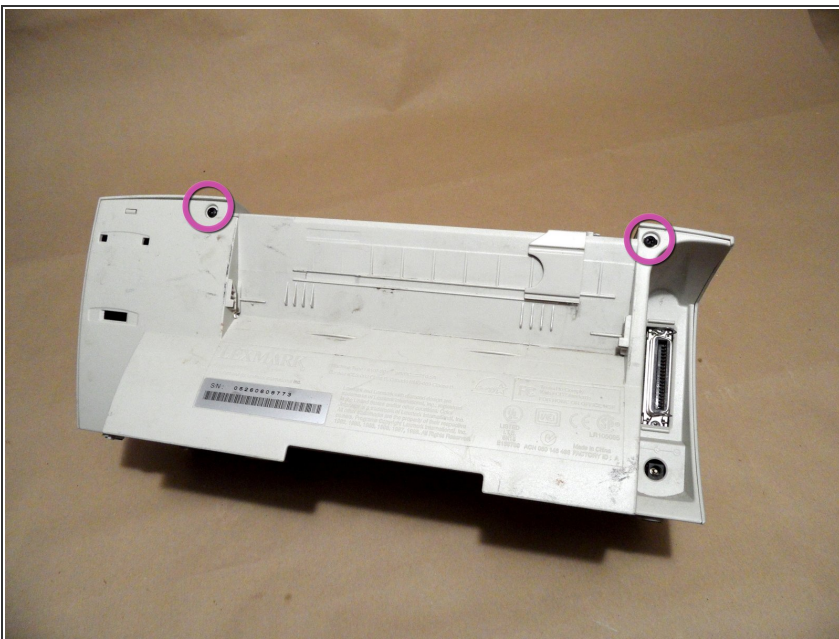
Step 1 — Lexmark Z11 Teardown



⚠ Be sure to remove the power cord and all other connections to and from the device.

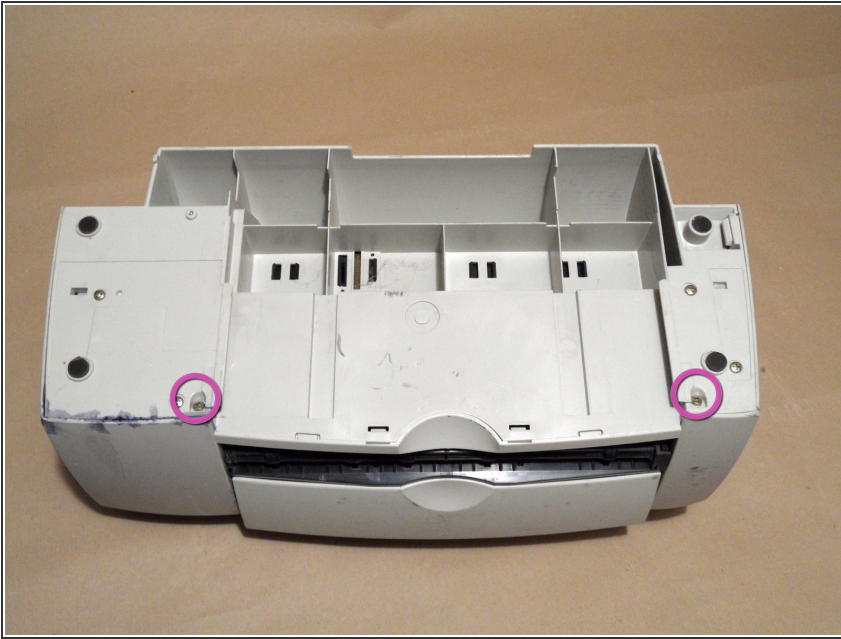
- Remove easily detachable parts.

Step 2



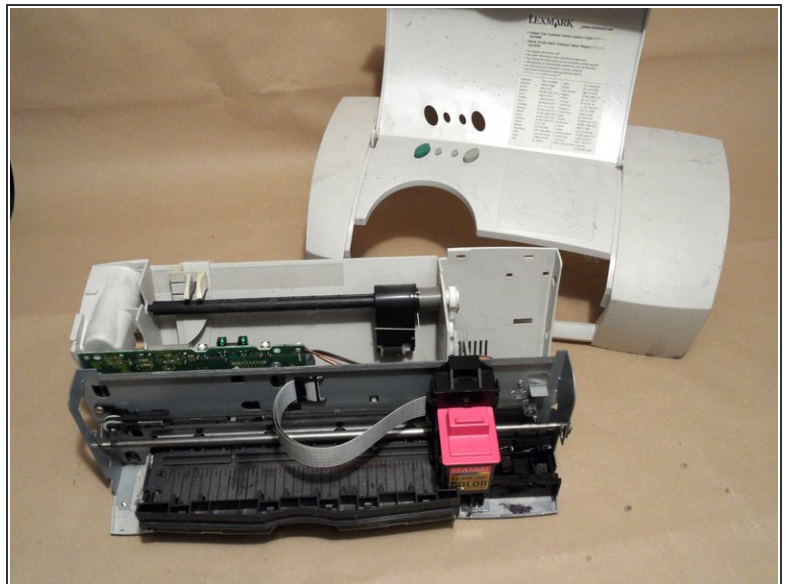
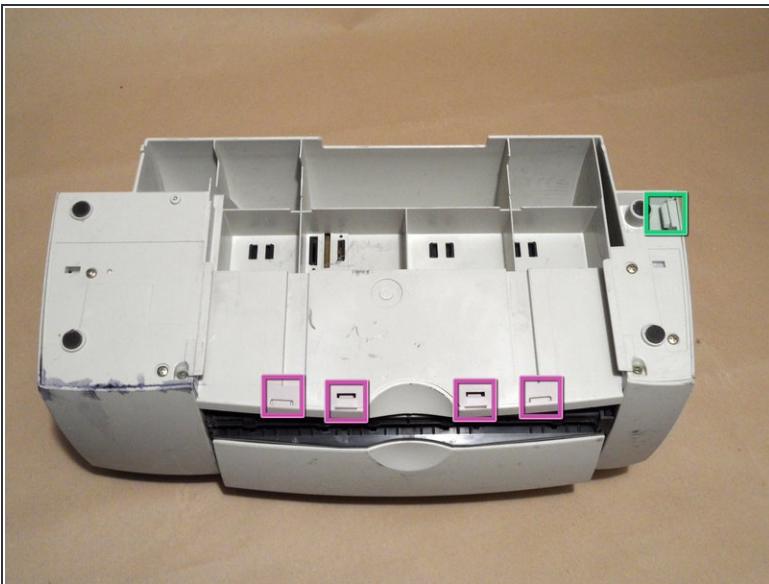
- To remove the cover and housing use a screw driver to remove the highlighted screws.

Step 3



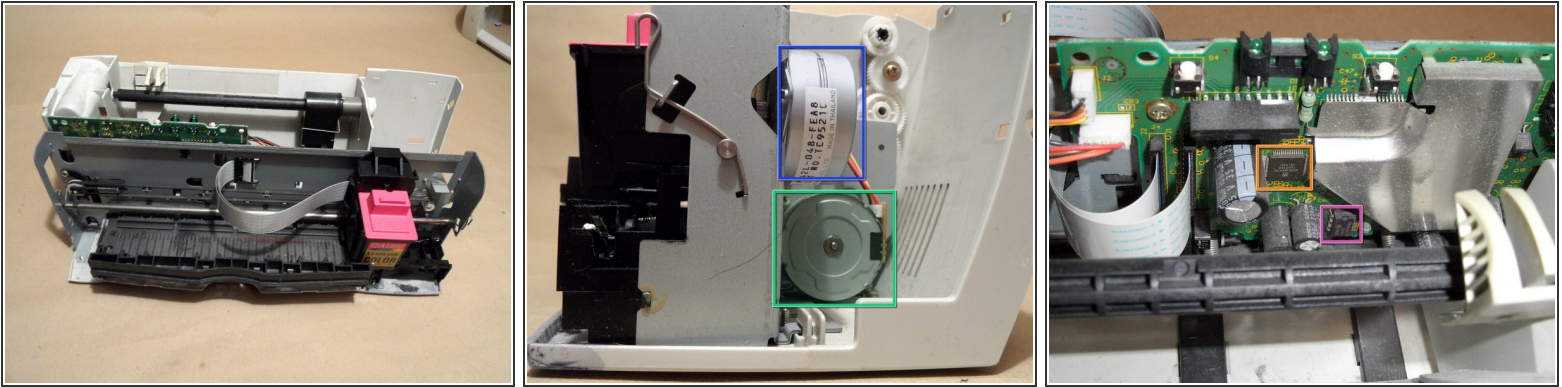
- Additionally, remove those two screws at the bottom of the device.

Step 4



- Press the nib marked in green inside and slightly lift the housing from the back plate shown in the first image here.
- The housing can be removed by lifting and rotating it around the catches on the lower front side of the device highlighted in purple. Finally, it is shifted slightly to the front out of those catches.

Step 5



- With this inner part nearly everything is easily accessible. There are two stepper motors:
 - NMB PM42L-048-FEA8
 - 4 wires
 - Mitsumi H9601
 - 5 wires, can probably be resoldered to use 4 or 6 wires
- There is also an electronics board as well as smaller useful parts like buttons, LEDs, light barriers.
 - Motorola XC901051FTA
 - Motorola [34063](#) (switching voltage regulator)

Step 6



- The motors in detail.

To reassemble your device, follow these instructions in reverse order.